



INSTRUCTION BULLETIN

No. 340474
Machine: 7300 / 8300
Published: 03-2010
Rev: 01

NOTE: DO NOT DISCARD the Parts List from the Instruction Bulletin. Place the Parts List in the appropriate place in your machine manual for future reference. Retaining the Parts List will make it easier to reorder individual parts and will save you the cost of ordering an entire kit.

NOTE: Numbers in parenthesis () are reference numbers for parts listed in Bill of Materials.

Installation instructions for kit number **387505 / 9006962**

SYNOPSIS:

This kit contains the parts needed to install a vacuumized side squeegee kit on 7300 / 8300 machines.
Please follow step-by-step instructions.

SPECIAL TOOLS / CONSIDERATIONS: LIFT OR HOIST W/ 1260 kg (2800 lb.) CAPACITY

(Estimated time to complete: 2 hours)

PREPARATION:

FOR SAFETY: Before leaving or servicing machine, stop on level surface, turn off machine, set parking brake, and remove key.

INSTALLATION:

1. Turn the machine power on.
2. Lower the rear squeegee.
3. Disconnect the vacuum hose from the old rear squeegee assembly.
4. Remove the channel guard and pivot from the right rear fender of the machine. Set the removed items aside.
5. Remove the rear squeegee from the machine.
6. Remove the four mounting bolts holding the squeegee support assembly to the wheel pockets. Set the squeegee support assembly on the floor. Refer to Fig. 2.
7. Raise the rear machine cover and secure in place with the cover support rod.
8. Open the rear battery compartment door. Disconnect the battery cables from the batteries.
9. Disconnect the safety cable from the battery pack and use a chain hoist or lift to remove the battery pack from the machine.

FOR SAFETY: Use a chain hoist or lift that will support the weight of the battery pack.

10. Remove and set aside the vacuum hose retainer bracket and LH battery spacer. Cut wire ties holding the recovery tank vacuum hose in place.
11. Disconnect the recovery tank vacuum hose from the rear squeegee. Remove the recovery tank vacuum hose from the machine.

12. Orient the vacuum hose tube weldment (10) so the small 1" opening points to the front right corner of the machine. Refer to Fig. 1.
13. Connect the shorter 26" hose (12) to the opening on the right side of the tube weldment (10). Connect the longer 75" hose (5) to the opening on the left side of the weldment (10). Refer to Fig. 1.
14. Connect the 44" hose (13) to the smaller opening on the right side of the weldment (10) with a hose clamp (14). Refer to Fig. 1.
15. Orient the new vacuum hose assembly under the machine so the 44" hose (13) points towards the front right corner of the machine (towards the operator compartment).
16. Route the 75" hose (5) up through the frame and to the recovery tank. Replace the recovery tank hose retainer bracket. Secure the hose with wire ties (18). Refer to Fig. 1.
17. Route the 26" hose (12) over the top of the squeegee lift actuator and down between the rubber tipped eye bolt ends on the squeegee lift assembly. Refer to Fig. 1.
18. Shift the squeegee support weldment to the left and align the mounting holes for the MaxPro 1000 squeegee with the mounting holes on the machine. Refer to Fig. 2.
19. Reinstall the squeegee support weldment onto the machine. Tighten the mounting hardware to 26-34 ft. lb. Refer to Fig. 2.
20. Attach one end of the squeegee guard channels to the right rear weldment panel.
21. Mount the new MaxPro 1000 rear squeegee assembly (19) to the squeegee support weldment and new squeegee guard channel. Connect the 26" hose (12) to the new squeegee (19). Refer to Fig. 2.
22. Disconnect and remove the side squeegee from the right side of the machine. Set the squeegee mounting hardware aside. Refer to Fig. 3.
23. Use saved hardware to install the new vacuumized squeegee (5) onto the right side of the machine. Refer to Fig. 3.
24. Increase pressure on rear pressure spring. Decrease pressure on front pressure spring.
25. Connect the 44" hose (7) to the rear weldment on top of the right side squeegee. Refer to Fig. 3.
26. Use a chain hoist or lift to reinstall the battery pack into the machine . Reconnect the safety cable to the battery pack.

FOR SAFETY: Use a chain hoist or lift that will support the weight of the battery pack.

27. Reconnect the battery cables to the batteries. Close and secure the rear battery compartment door.
28. Close the rear machine cover.
29. Turn the machine power on. Check the machine and new vacuumized side squeegee for proper operation. Be sure the squeegee lift bell crank does not brush against the new vacuum hose.

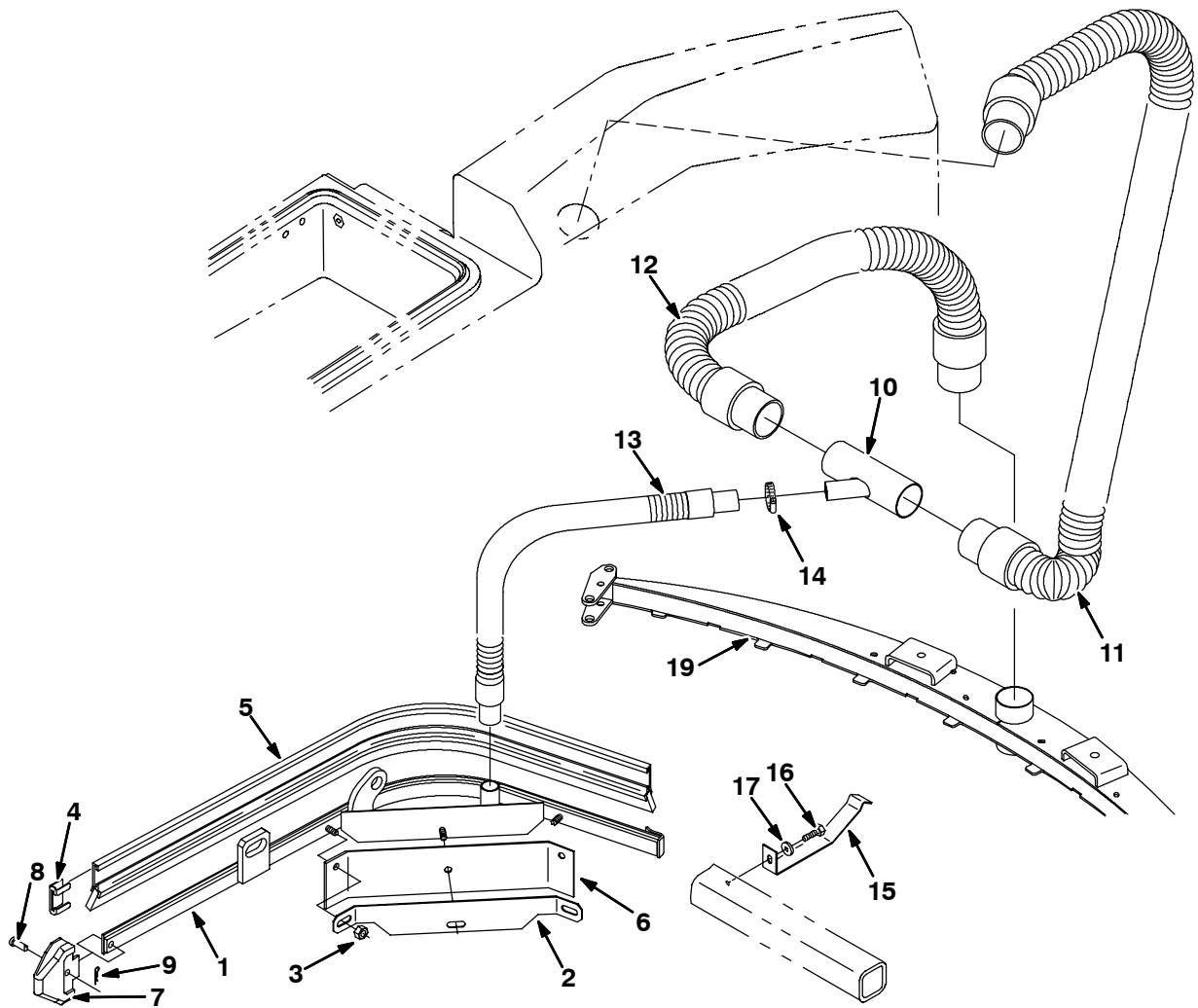


FIG. 1 - Recovery Tank Vac Hose Assembly, Vac Side Squeegee

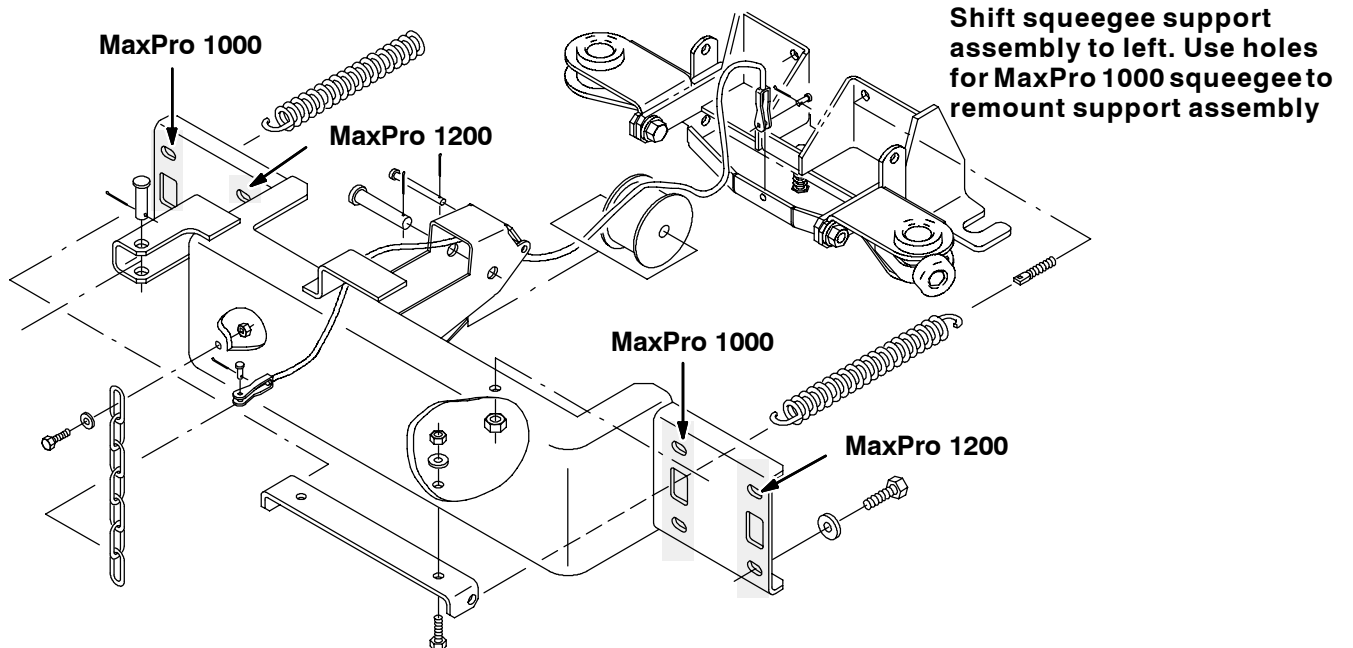
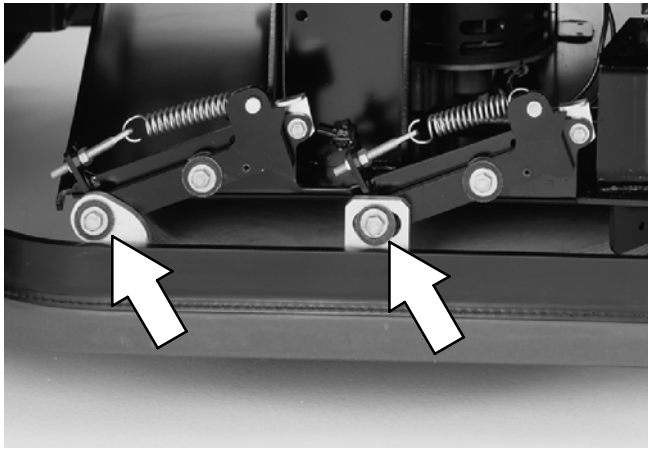
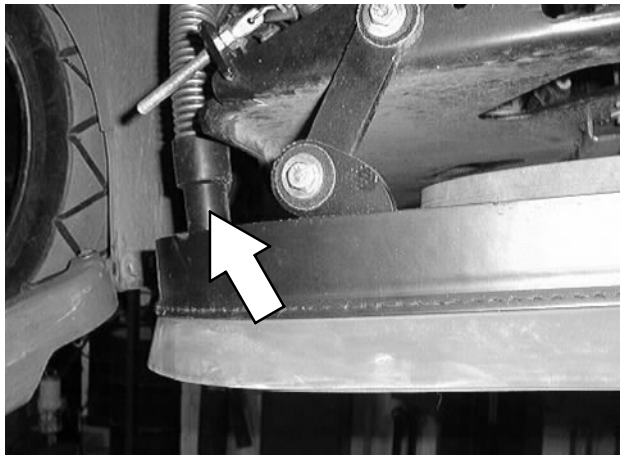


FIG. 2 - Squeegee Support Assembly



Remove standard side squeegee from the right side of the machine. Set mounting hardware aside.



Replace standard side squeegee with vacuumized side squeegee. Connect 1" dia. vacuum hose to fitting on top of vacuumized side squeegee.

FIG. 3 - Vacuumized Side Squeegee Installation

Bill Of Materials For Vacuumized Side Squeegee Kit 387505

Ref.	TENNANT Part No.	Description	Qty.
1	387509	Frame Assy, Sqge, Side, Vacuum, Rh	1
2	387516	Retainer, Blade, Sqge, Front	1
3	08713	Nut, Hex, Lock, M08 X 1.25,NI, SS	3
4	86759	Retainer, Sqge	1
5	387545	Blade Assy, Sqge, Side	1
6	387546	Blade, Squeegee	1
7	386986	Guide, Point, Side Sqge	1
8	386987	Pin, Clevis, 0.31 D X 0.88l	1
9	86866	Pin, Hair Cotter, 0.38 D .072 Wir	1
10	386518	Tube Wldt	1
11	1005133	Hose Assy, W/2cuff, 2.0d 75l	1
12	1005135	Hose Assy, W/2cuff, 2.0d 26l	1
13	387517	Hose Assy, W/2 Cuff, 1.0D 44L 1.0/1.0	1
14	11399	Clamp, Hose, Wormdrive, 0.81-1.50d	1
15	1002464	Bracket, Tube , Tee	1
16	361339	Screw, Hex, M 6 X 1.0 X 16, Fmg	1
17	32483	Washer, Flat, 0.25 Sae	1
18	44961	Tie, Cable, Nyl, 14.5L .30W 4.0 Max D	6
19	386860	Kit, Cl, sqge, rear	1
20	71607	Bushing, Sleeve, 0.63B 0.72D 0.38L	1
21	25735	Bushing, Flng, 0.63B 0.75D 0.38L	1
22	64425	Washer, Thrust, 0.61B 1.25D .06, FGL	3
23	01685	Washer, Flat, 0.38B 0.88D .08 SS	3

Bill Of Materials For Vacuumized Side Squeegee Kit - 9006962

Ref.	TENNANT Part No.	Description	Qty.
1	387509	Frame Assy, Sqge, Side, Vacuum, Rh	1
2	387516	Retainer, Blade, Sqge, Front	1
3	08713	Nut, Hex, Lock, M08 X 1.25,Nl, SS	3
4	86759	Retainer, Sqge	1
5	387545	Blade Assy, Sqge, Side	1
6	387546	Blade, Squeegee	1
7	386986	Guide, Point, Side Sqge	1
8	386987	Pin, Clevis, 0.31 D X 0.88l	1
9	86866	Pin, Hair Cotter, 0.38 D .072 Wir	1
10	386518	Tube Wldt	1
11	1005133	Hose Assy, W/2cuff, 2.0d 75l	1
12	1005135	Hose Assy, W/2cuff, 2.0d 26l	1
13	387517	Hose Assy, W/2 Cuff, 1.0D 44L 1.0/1.0	1
14	11399	Clamp, Hose, Wormdrive, 0.81-1.50d	1
15	1002464	Bracket, Tube , Tee	1
16	361339	Screw, Hex, M 6 X 1.0 X 16, Fmg	1
17	32483	Washer, Flat, 0.25 Sae	1
18	44961	Tie, Cable, Nyl, 14.5L .30W 4.0 Max D	6
19	9006930	Kit, Cl, sqge, rear	1
20	71607	Bushing, Sleeve, 0.63B 0.72D 0.38L	1
21	25735	Bushing, Flng, 0.63B 0.75D 0.38L	1
22	64425	Washer, Thrust, 0.61B 1.25D .06, FGL	3
23	01685	Washer, Flat, 0.38B 0.88D .08 SS	3

TENNANT COMPANY
P. O. Box 1452
Minneapolis, MN 55440-1452