



INSTRUCTION BULLETIN

No. 340470
Machine: 7200
Published: 1-01/00
System: SCRUBBING

NOTE: DO NOT DISCARD the Parts List from the Instruction Bulletin. Place the Parts List in the appropriate place in your machine manual for future reference. Retaining the Parts List will make it easier to reorder individual parts and will save you the cost of ordering an entire kit.

NOTE: Numbers in parenthesis () are reference numbers for parts listed in Bill of Materials.

Installation instructions for kit number 398309 and 398310

SYNOPSIS / PROBLEM:

This kit contains the parts needed to install a 700 mm or 900 mm breakaway squeegee on the 7200 model scrubber.

Please follow step-by-step instructions.

SPECIAL TOOLS / CONSIDERATIONS: NONE

(Estimated time to complete: 1 hour)

PREPARATION:

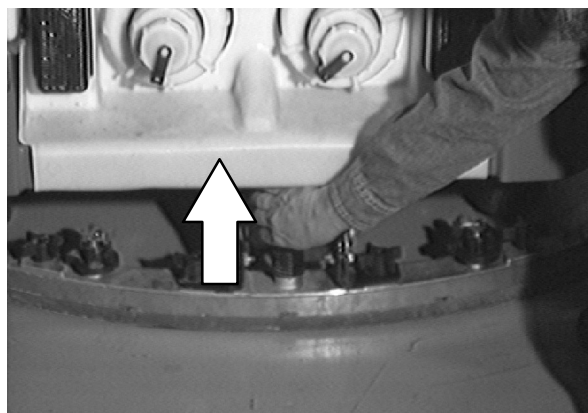
(Refer to FIG. 1 and 2)

FOR SAFETY: Before leaving or servicing machine, stop on level surface and set parking brake. Then turn off machine and remove key.

REMOVING REAR SQUEEGEE ASSEMBLY:

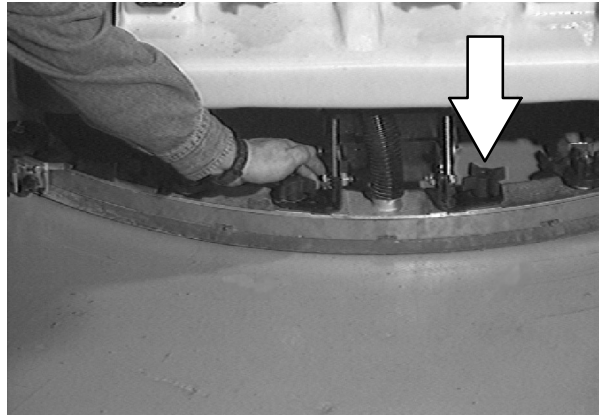
(Refer to FIG. 1 and 2)

1. Lower the squeegee to approximately 25 mm (1 in) from the floor.
2. Turn the machine power off and set the parking brake.
3. Remove the squeegee suction hose from the squeegee.

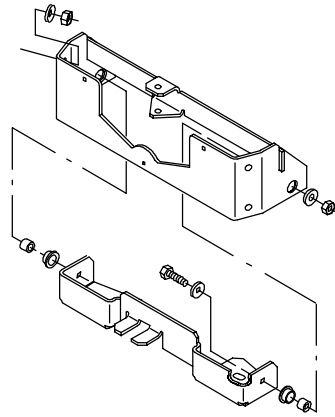


4. Remove both squeegee mounting knobs.

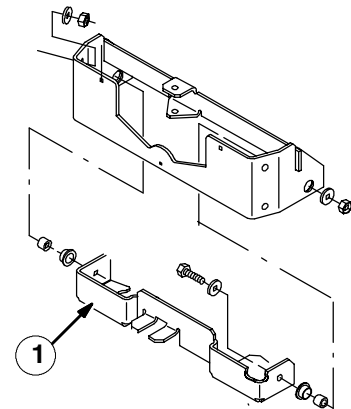
5. Pull the squeegee off the machine.



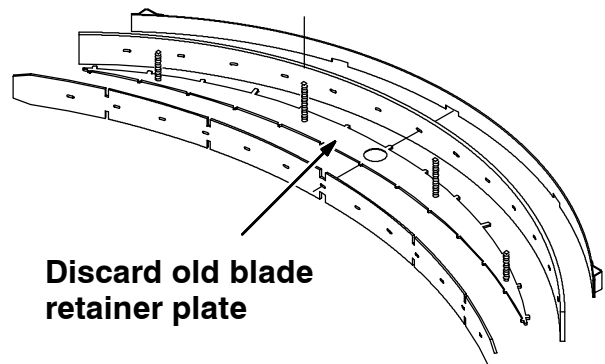
6. Disconnect and remove the squeegee pivot bracket and mounting hardware from the squeegee lift bracket. Discard the pivot bracket and mounting hardware.



7. Mount the new pivot bracket (1) to the squeegee lift bracket with new sleeves (8), bushings (7) screws (9), washers (10) and lock nuts (11). (Refer to FIG. 1)

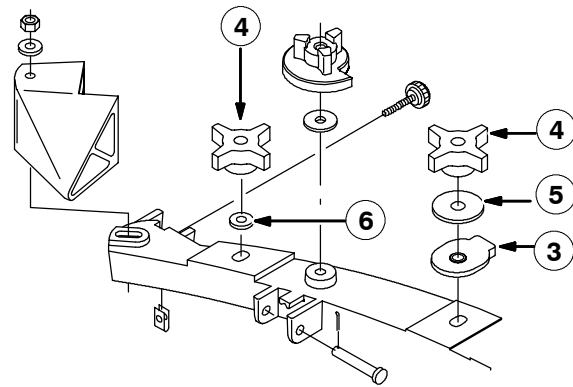


8. Disassemble the rear squeegee group and remove the squeegee blade retainer plate.



9. Mount the squeegees on the new retainer plate (3). Slide the retainer plate and squeegees into the housing. (Refer to FIG. 2)

10. Secure the retainer plate to the housing with two 4-prong knobs (4), large washers (5) and squeegee mounting rings (3) on the two middle studs. Secure the retainer plate to the housing with two 4-prong knobs (4) and flat washers (6) on the two outside studs. (Refer to FIG. 2)



11. Mount the new rear squeegee assembly to the pivot bracket (1), and secure with the mounting knobs (4). (Refer to FIG. 1)

12. Reconnect the squeegee suction hose to the squeegee. Start the machine and check the squeegee for proper deflection and operation.

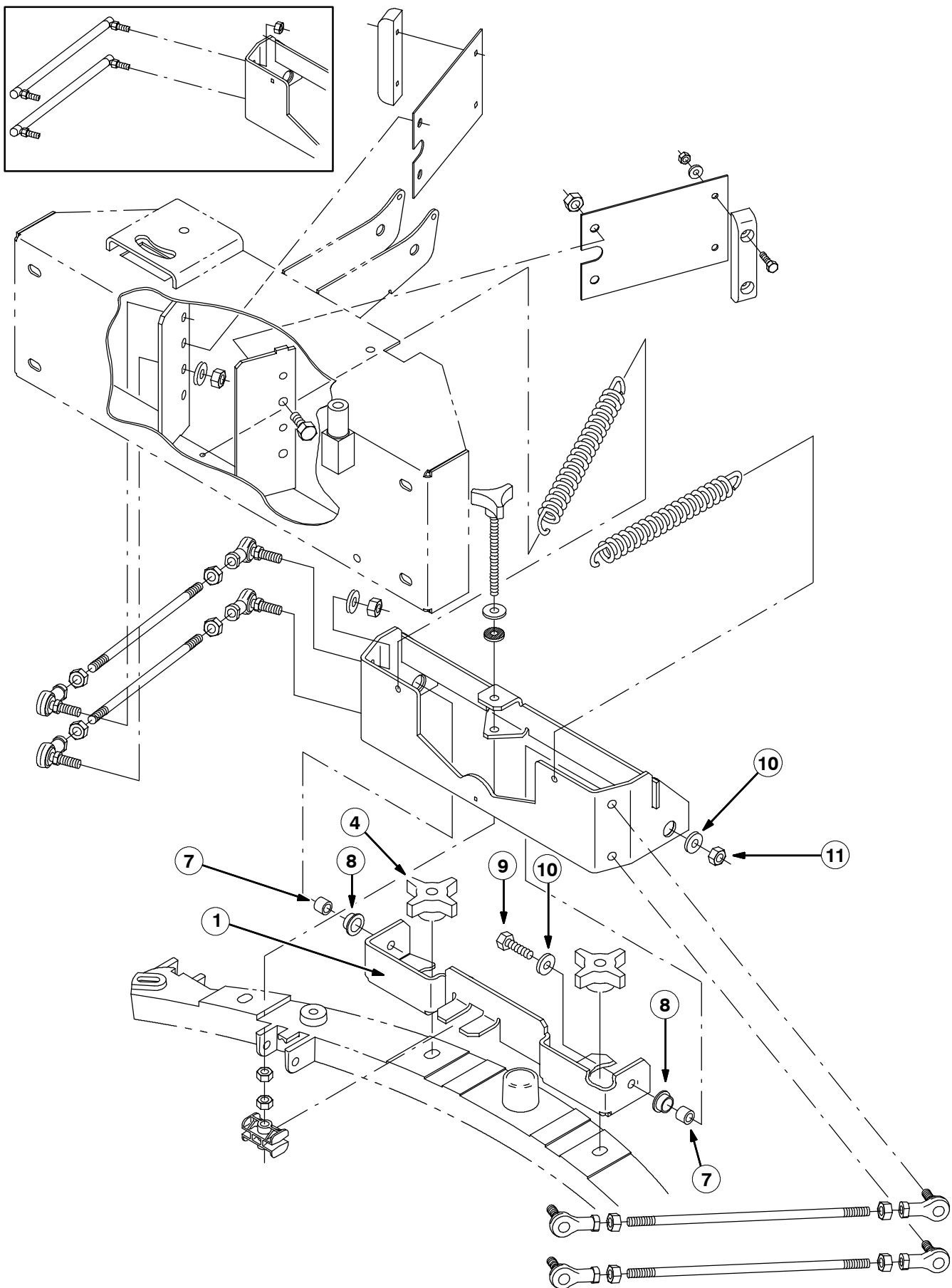


FIG. 1 - NEW REAR SQUEEGEE PIVOT BRACKET INSTALLATION

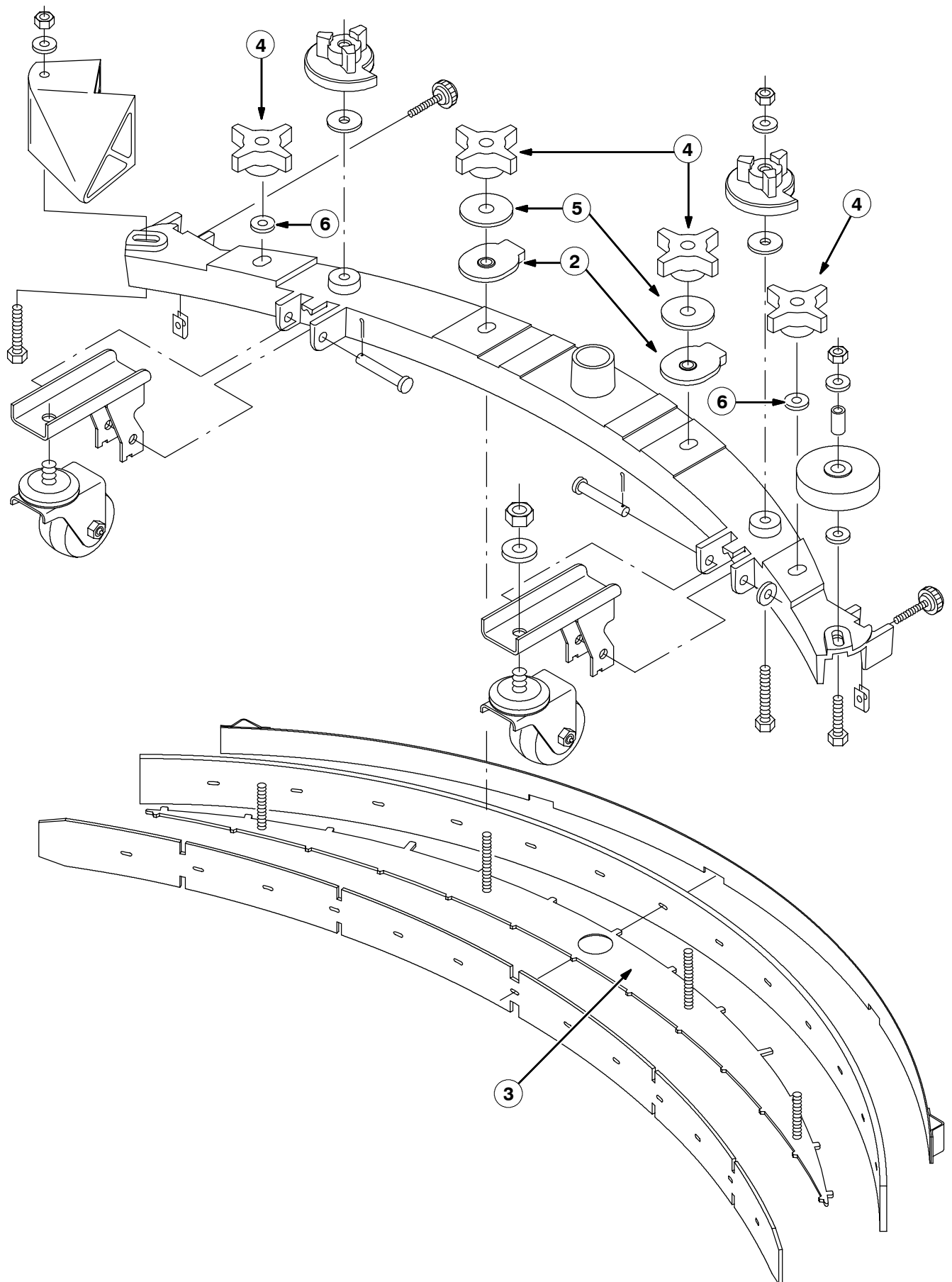


FIG. 2 - NEW REAR SQUEEGEE GROUP

BILL OF MATERIALS FOR 700 MM BREAKAWAY SQUEEGEE KIT 398309

Ref.	TENNANT Part No.	Description	Qty.
1	398307	Bracket wldt, pivot	1
2	398304	Ring, mtg, sqge, 0.38L	2
3	398308	Plate, blade retainer, 28" [700 MM]	1
4	370100	Knob, 4-prong w/ 0.31-18, insert	4
5	04414	Washer, 0.53B 1.88D 0.12, stl, pl	2
6	01685	Washer, flat, 0.31 SS	2
7	25735	Bushing, flng, 0.63B 0.75D 0.38L	2
8	71257	Sleeve	2
9	77347	Screw, hex, M10 X 1.5 X 35, SS	2
10	01686	Washer, flt, 0.38, SS	4
11	08714	Nut, hex, lock, M10 X 1.5, NL, SS	2

BILL OF MATERIALS FOR 900 MM BREAKAWAY SQUEEGEE KIT 398310

Ref.	TENNANT Part No.	Description	Qty.
1	398307	Bracket wldt, pivot	1
2	398304	Ring, mtg, sqge, 0.38L	2
3	398303	Plate, blade retainer, 36" [900 MM]	1
4	370100	Knob, 4-prong w/ 0.31-18, insert	4
5	04414	Washer, 0.53B 1.88D 0.12, stl, pl	2
6	01685	Washer, flat, 0.31 SS	2
7	25735	Bushing, flng, 0.63B 0.75D 0.38L	2
8	71257	Sleeve	2
9	77347	Screw, hex, M10 X 1.5 X 35, SS	2
10	01686	Washer, flt, 0.38, SS	4
11	08714	Nut, hex, lock, M10 X 1.5, NL, SS	2

TENNANT COMPANY
P. O. Box 1452
Minneapolis, MN 55440-1452