



INSTRUCTION BULLETIN

No. 340460
Machine: 7300/8300
Published: 1-01/01
System: OPTIONS

NOTE: DO NOT DISCARD the Parts List from the Instruction Bulletin. Place the Parts List in the appropriate place in your machine manual for future reference. Retaining the Parts List will make it easier to reorder individual parts and will save you the cost of ordering an entire kit.

NOTE: Numbers in parenthesis () are reference numbers for parts listed in Bill of Materials.

Installation instructions for kit number 387467

SYNOPSIS / PROBLEM:

This kit contains the parts needed to replace a standard drain assembly with an ES™ drain assembly on the model sweeper/scrubber.

Please follow step-by-step instructions.

SPECIAL TOOLS / CONSIDERATIONS: NONE

(Estimated time to complete: 0.5 hour)

PREPARATION:

(Refer to FIG. 1)

FOR SAFETY: Before leaving or servicing machine, stop on level surface and set parking brake. Then turn off machine and remove key.

1. The tank should be empty before replacing drain assembly. Check and drain tank if necessary.
2. Remove the old drain assembly from the tank.

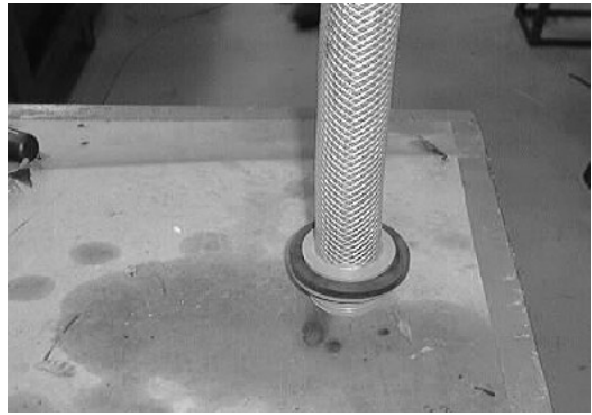
INSTALLATION:

(Refer to FIG. 1)

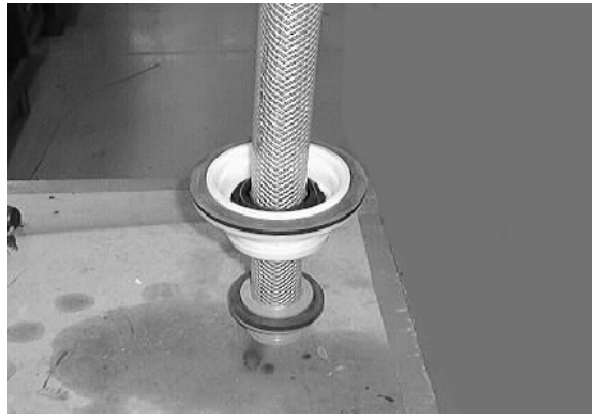
1. Mount the hose seal (10) in the center of the cover insert (11). Mount the lid gasket (8) around the edge of the cover insert (11). (Refer to FIG. 1)



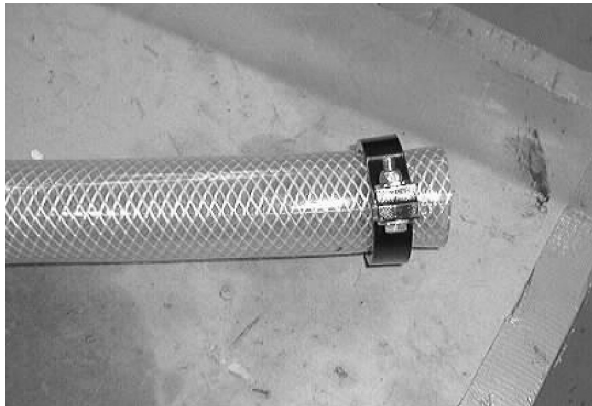
2. Slide the lid gasket (16) over the hose, and onto the end of the drain hose assembly (17). (Refer to FIG. 1)



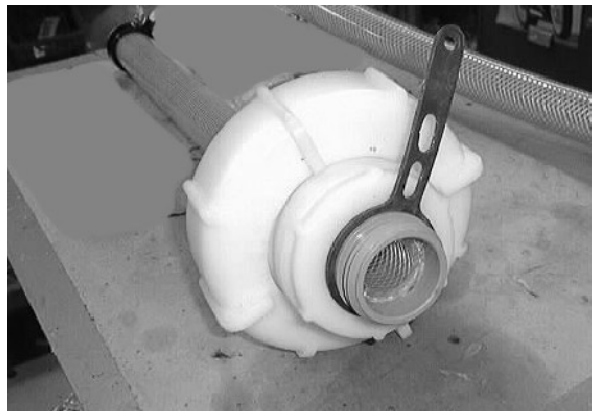
3. Install the new lid assembly onto the drain hose assembly (17). (Refer to FIG. 1)



4. Mount the hose clamp (12) to the end of the drain hose assembly (17) with the hex screw (13), flat washers (14) and lock nut (15). (Refer to FIG. 1)



5. Mount the assembly cover (7) over top of the new lid assembly with the drain cap gasket (9). Thread the drain cap (6) onto the insert cover (11) Mount the cap retainer strap (5) to the drain hose (17). (Refer to FIG. 1)



6. Mount the cap gasket (3) inside of the tank drain cap (2) with the retaining ring (4). Secure the tank drain cap to the retaining strap (5). (Refer to FIG. 1)

7. Install the new drain assembly in place of the old assembly. Hand tighten the new drain assembly.

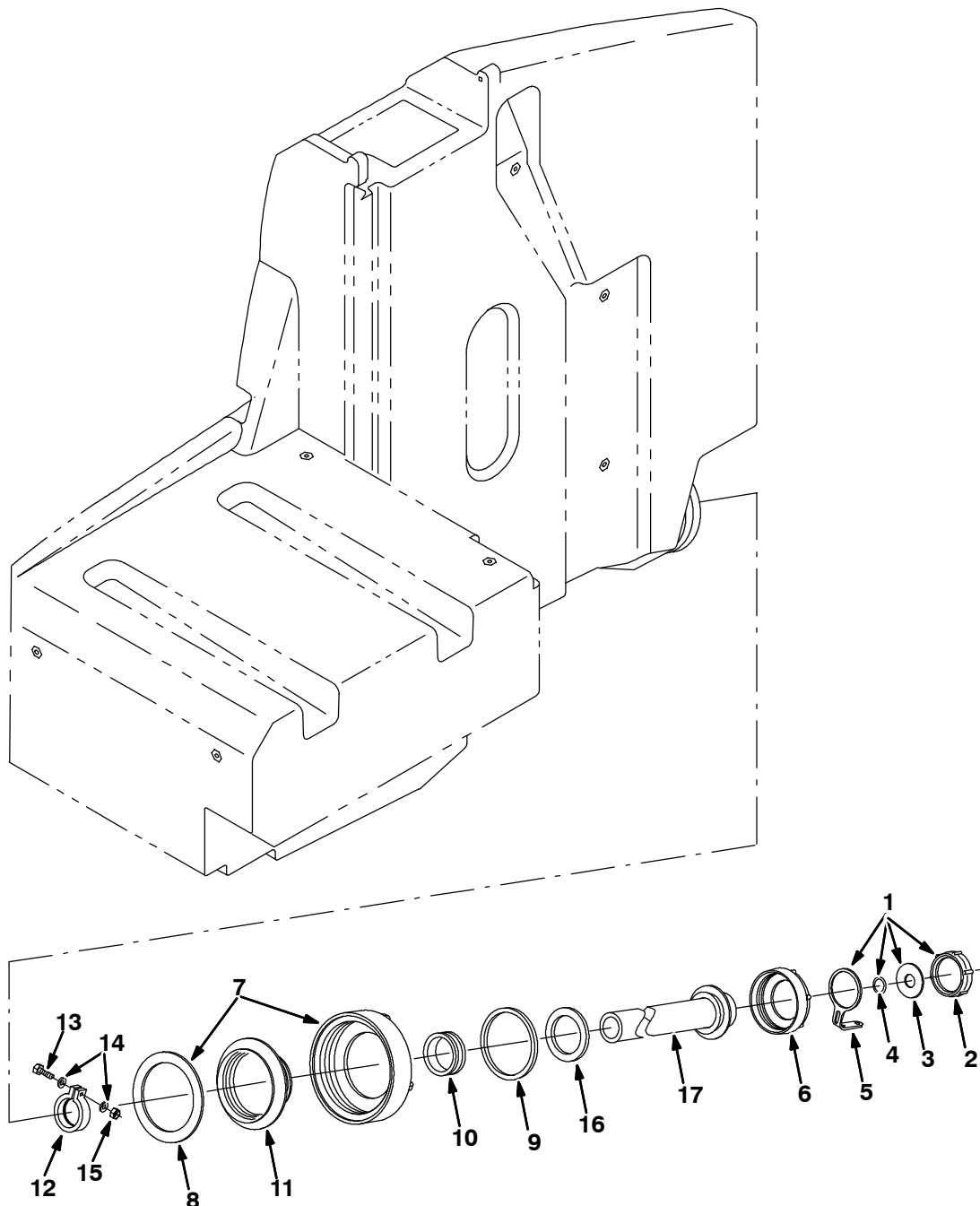


FIG. 1 - ES™ DRAIN ASSEMBLY KIT 387467

BILL OF MATERIALS FOR ES™ DRAIN ASSEMBLY KIT 387467

Ref.	TENNANT Part No.	Description	Qty.
1	32501	Kit, cap, drain	1
2	32613	Cap, tank, drain, 2.25 thread pye	1
3	32614	Gasket, cap	1
4	32669	Ring, retaining, ext, 0.75d, Ss	1
5	32508	Strap	1
6	14880	Cap, tank, drain, 3.85 thread pye	1
7	223674	Cover assy	1
8	375200	Gasket, lid	1
9	79320	Gasket, cap, drain	1
10	41421	Seal	1
11	14864	Cover, insert	1
12	41454	Clamp, hose, plstc, 1.60d X 0.62w	1
13	12316	Screw, hex, M05 X 0.8 X 25, Ss	1
14	01683	Washer, flt, #10 Ss	1
15	09739	Nut, hex, lock, M05 X 0.8, NI, Ss	1
16	41451	Gasket, lid	1
17	386423	Hose assy, drain	1

TENNANT COMPANY
P. O. Box 1452
Minneapolis, MN 55440-1452