



# INSTRUCTION BULLETIN

No. 340458  
Machine: 5680  
Published: 12-2004  
Rev: 01

**NOTE: DO NOT DISCARD the Parts List from the Instruction Bulletin. Place the Parts List in the appropriate place in the machine manual for future reference. Retaining the Parts List will make it easier to reorder individual parts and will save the cost of ordering an entire kit.**

*NOTE: Numbers in parenthesis ( ) are reference numbers for parts listed in Bill of Materials.*

Installation instructions for kit number 374754

## **SYNOPSIS / PROBLEM:**

This kit contains the parts needed to replace the solution control valve on the model 5680 scrubbers.

Please follow step-by-step instructions.

## **SPECIAL TOOLS / CONSIDERATIONS: NONE**

(Estimated time to complete: 1 hour)

### **PREPARATION:**

(Refer to FIG. 1, 2 and 3)

1. Empty the machine solution tank.
2. Move the machine to a clean level surface.

**FOR SAFETY: Before leaving or servicing machine, stop on level surface. Then turn off machine and remove key.**

3. Remove front cover from machine. Set the front cover and mounting hardware aside.
4. Locate the solution control group mounted underneath the front of the solution tank.
5. Raise the solution tank and engage the solution tank support arm.

### **INSTALLATION:**

(Refer to FIG. 1, 2 and 3)

1. Remove the front PVC hose from the solenoid valve and T-fitting mounted to the top of the scrub head. (Refer to FIG. 1)
2. Disconnect push/pull cable 397759 from the pinch lever on the valve mounting bracket.
3. Disconnect the other end of the push/pull cable from the solution control lever.
4. Remove and discard 90° hose 397711 connecting solution tank to solution control valve 374754.
5. Remove and discard solenoid valve 374754, straight hose 222090 and 90° plastic elbow 86509. (Refer to FIG. 1)
6. Remove the valve mounting bracket and lever from the machine. Set the mounting hardware aside. (Refer to FIG. 1)

7. Assemble the new solenoid valve (2) to the new mounting bracket (1) with two hex screws and lock nuts. Tighten hardware to 16–20 ft lbs. (Refer to FIG. 2)
8. Mount 90° water hose (3) to the solenoid valve (2) with wormdrive clamp. Hand tighten the wormdrive clamp with 5/16 nut driver. (Refer to FIG. 2)
9. Assemble the pinch lever (5) to the bracket (1) with a nylon washer (between the lever and bracket), hex screw, flat washer and lock nut. Hand tighten hardware. The pinch lever should move with a slight tension. (Refer to FIG. 2)
10. Mount the valve (2) and bracket (1) assembly to the bottom of the solution tank. Tighten hardware to 16–20 ft lbs. (Refer to FIG. 2)
11. Connect the 90° water hose (3) to the tank with wormdrive clamp. Hand tighten the wormdrive clamp with 5/16 nut driver. (Refer to FIG. 2)
12. Connect one end of the new push pull cable (4) to the pinch valve lever (5) with the swivel and pan screw. Hand tighten the securing hardware. (Refer to FIG. 2)
13. Route the new push pull cable (4) under the bottom of the solution tank, back to the control lever. Ensure that the 90° water hose (3) is closed when the lever is pulled back, and that the lever stays in the closed position. Tighten the pinch lever accordingly. (Refer to FIG. 2)
14. Secure the new push pull cable (4) to the control lever with the swivel and pan screw. (Refer to FIG. 2)
15. Connect the machine harness 8B/GRY and 7B/PUR to the new solenoid valve (2). Secure the wire harness to the solenoid valve (2) with a plastic wire tie. (Refer to FIG. 3)
16. Reinstall the front cover onto the machine. Disengage the solution tank support rod and lower the solution tank.
17. Check the machine and new solution control group for proper operation.

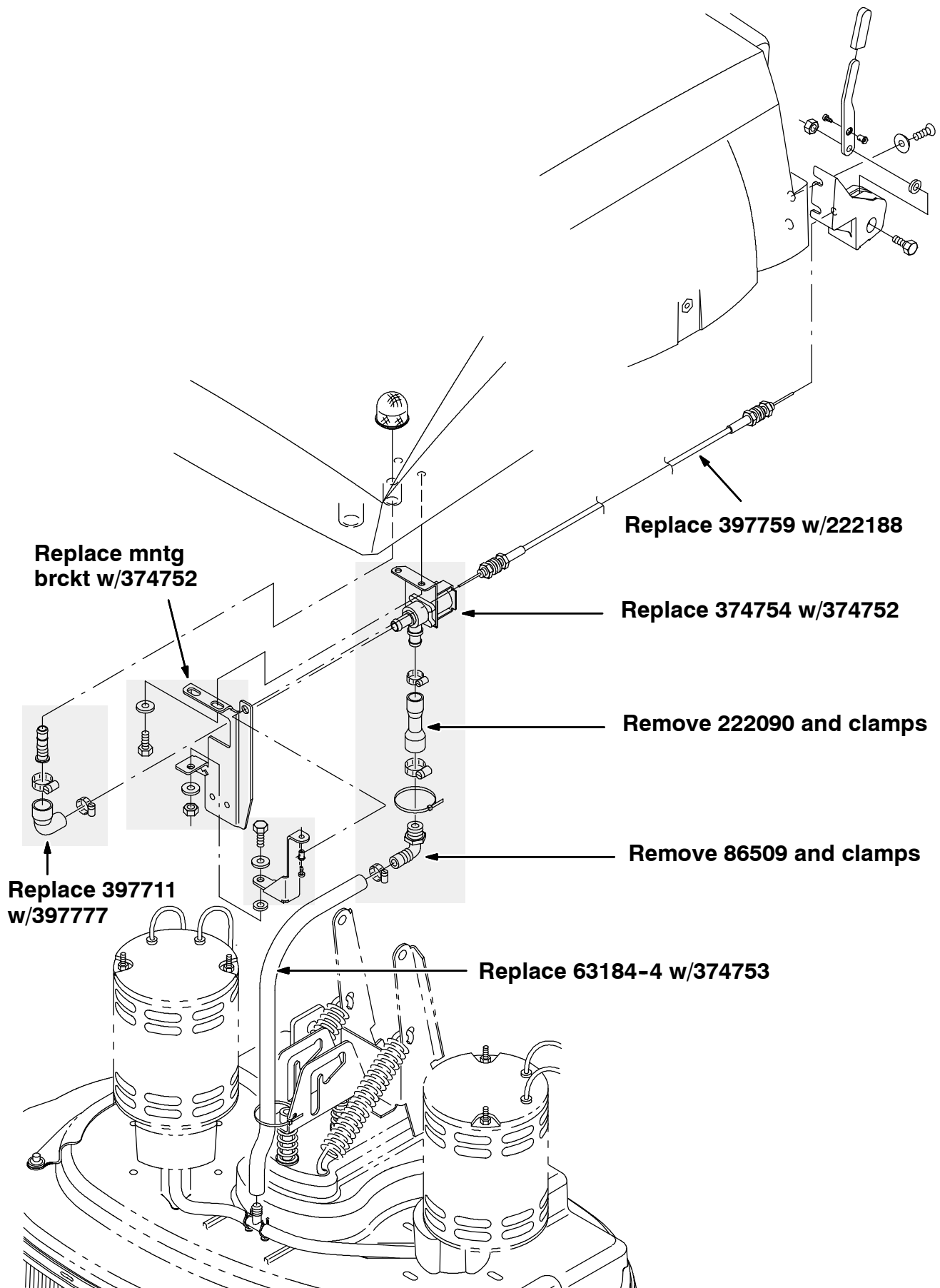
---

#### Bill of Materials for Solution Valve Replacement Kit 374754

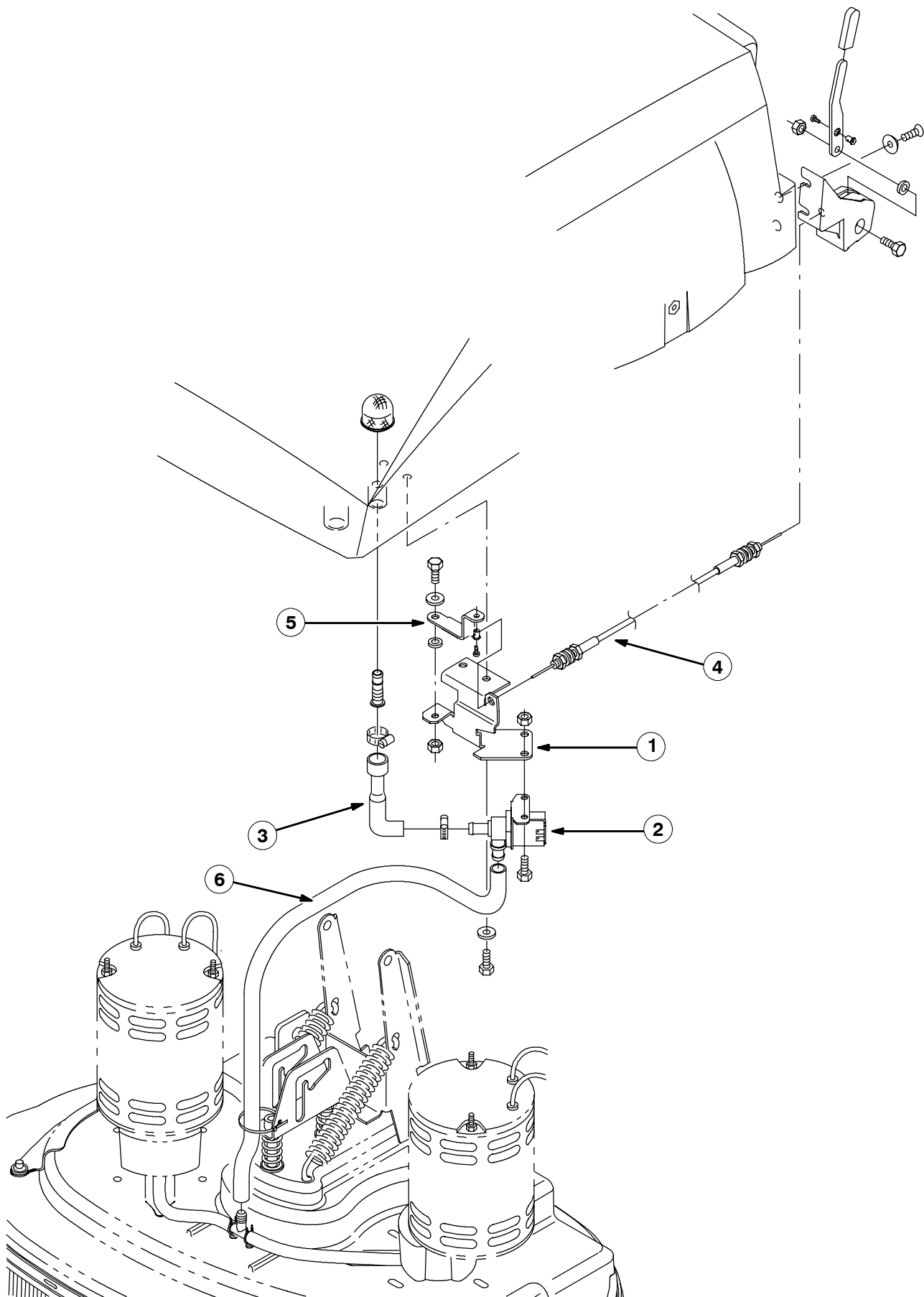
Ref.	TENNANT Part No.	Description	Qty.
1	397787	Bracket, Mtg, Valve	1
2	374752	Valve, Water, Sol, 36VDC 04PF/04PF	1
3	397777	Hose, Rbr, E90, 0.62ID 0.81ID (Valve)	1
4	222188	Cable, Push/Pull, 51.5L 1.3 0.075	1
5	222097	Lever, Valve	1
6	374753	Hose, PVC, Wir, 0.50ID 0.74OD 28.00L	1

---

TENNANT COMPANY  
P. O. Box 1452  
Minneapolis, MN 55440-1452



**FIG. 1-Old Solution Control Group, 5680**



**FIG. 2-New Solution Control Group, 5680**

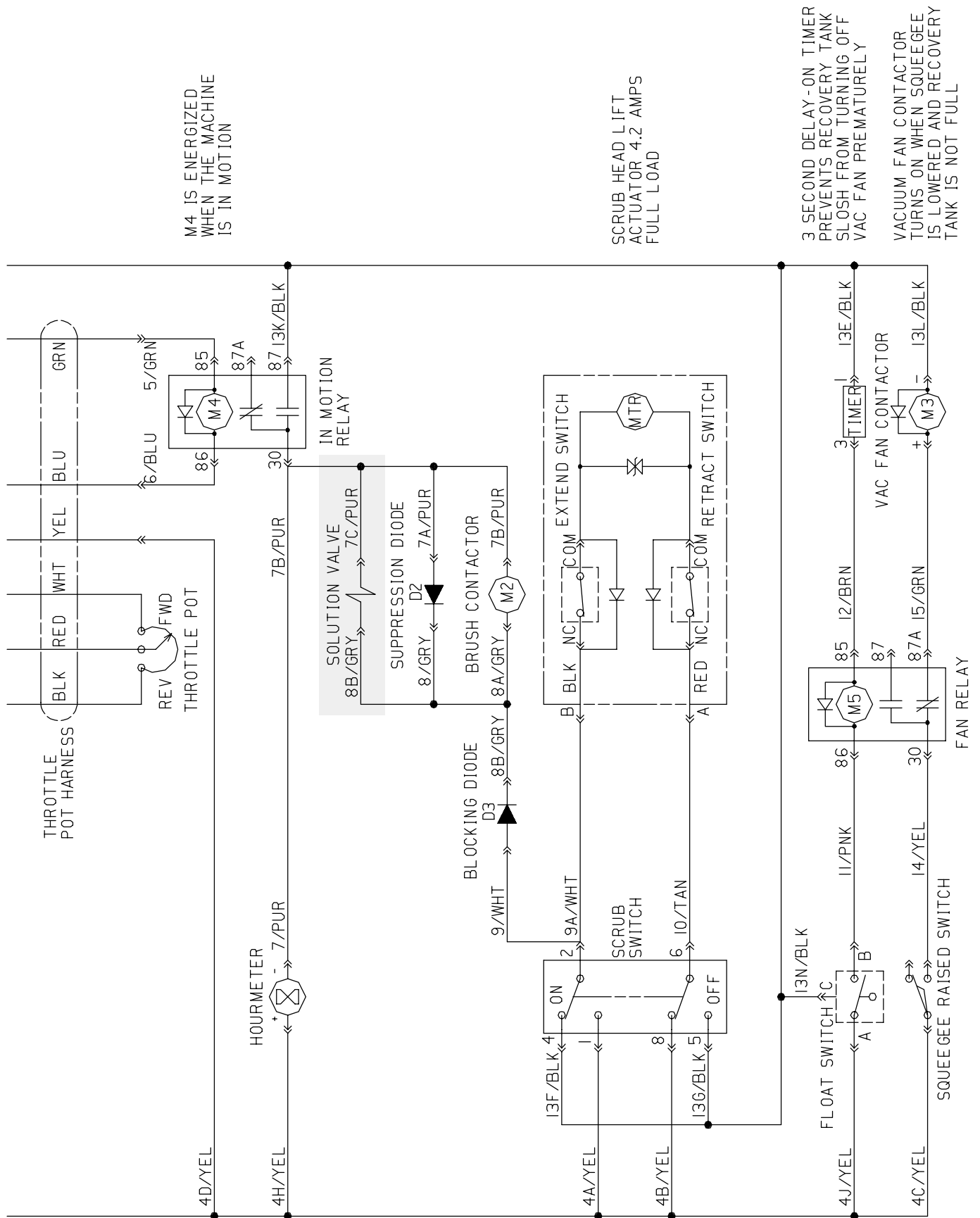


FIG. 3-Electrical Schematic, 5680