



INSTRUCTION BULLETIN

No. 340443
Machine: 140E,TTI,BOVAC
Published: 6-00/00
System: SWEEPING

NOTE: DO NOT DISCARD the Parts List from the Instruction Bulletin. Place the Parts List in the appropriate place in your machine manual for future reference. Retaining the Parts List will make it easier to reorder individual parts and will save you the cost of ordering an entire kit.

NOTE: Numbers in parenthesis () are reference numbers for parts listed in Bill of Materials.

Installation instructions for kit number 398200

SYNOPSIS / PROBLEM:

This kit contains the parts needed to install a carpet lint dual filter kit on the models 140E, TTI and Bovac sweepers. The installation of the carpet lint pre-filter 65358 will help to intercept large lint particles before they reach the panel dust filter, preventing premature clogging. The carpet lint filter can be easily removed, cleaned and re-installed, and will increase the life of the panel dust filter.

Please follow step-by-step instructions.

SPECIAL TOOLS / CONSIDERATIONS: NONE

(Estimated time to complete: 1 hour)

PREPARATION:

(Refer to FIG. 1, 2 and 3)

1. Place the master power switch in the off position to prevent the machine from creeping.

FOR SAFETY: Before leaving or servicing machine, stop on level surface and set parking brake. Then turn off machine and remove key.

PLEATED DUST FILTER REMOVAL:

(Refer to FIG. 1)

1. Push the filter shaker button to shake the excess dust from the filter.
2. Unlatch the two filter cover latches and lower the rear filter cover. (Refer to FIG. 1)
3. Slide the filter retention bar up and out of the slotted retention brackets.
4. Push the filter retention latch upward, then slide the filter out of the filter compartment.

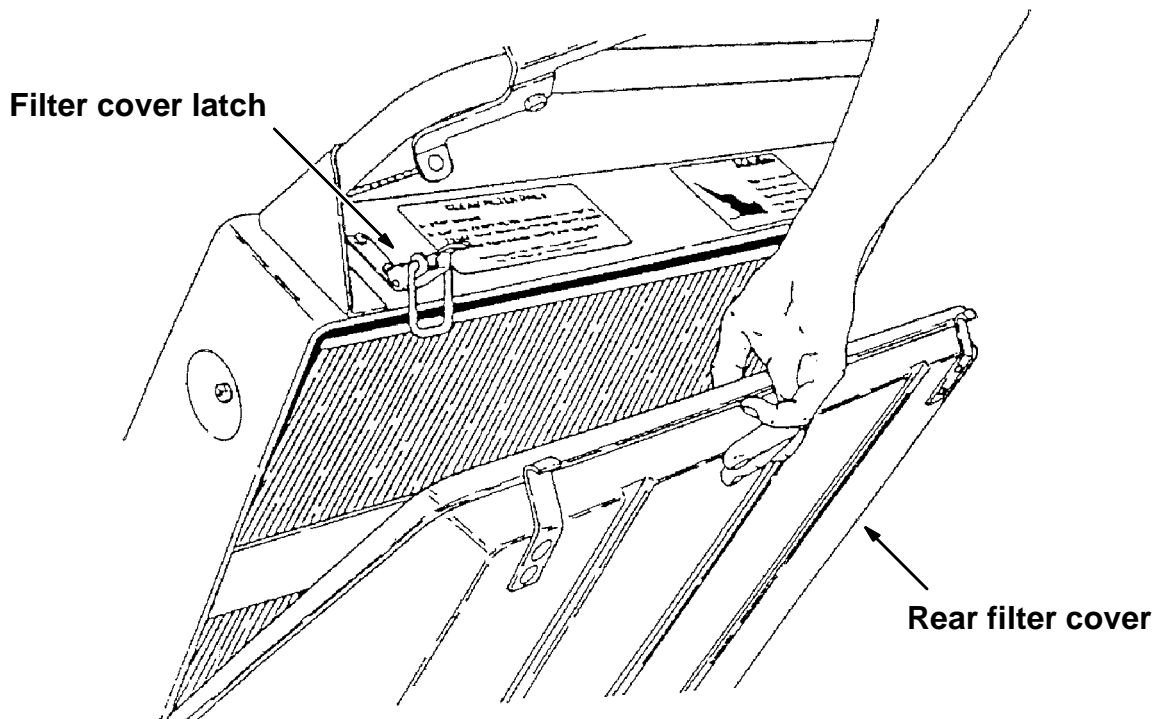


FIG. 1 - OPENING REAR FILTER COVER

CARPET LINT DUAL FILTER ASSEMBLY:
(Refer to FIG. 2)

1. Assemble the pre-filter screen 65358 to the filter element 60368.

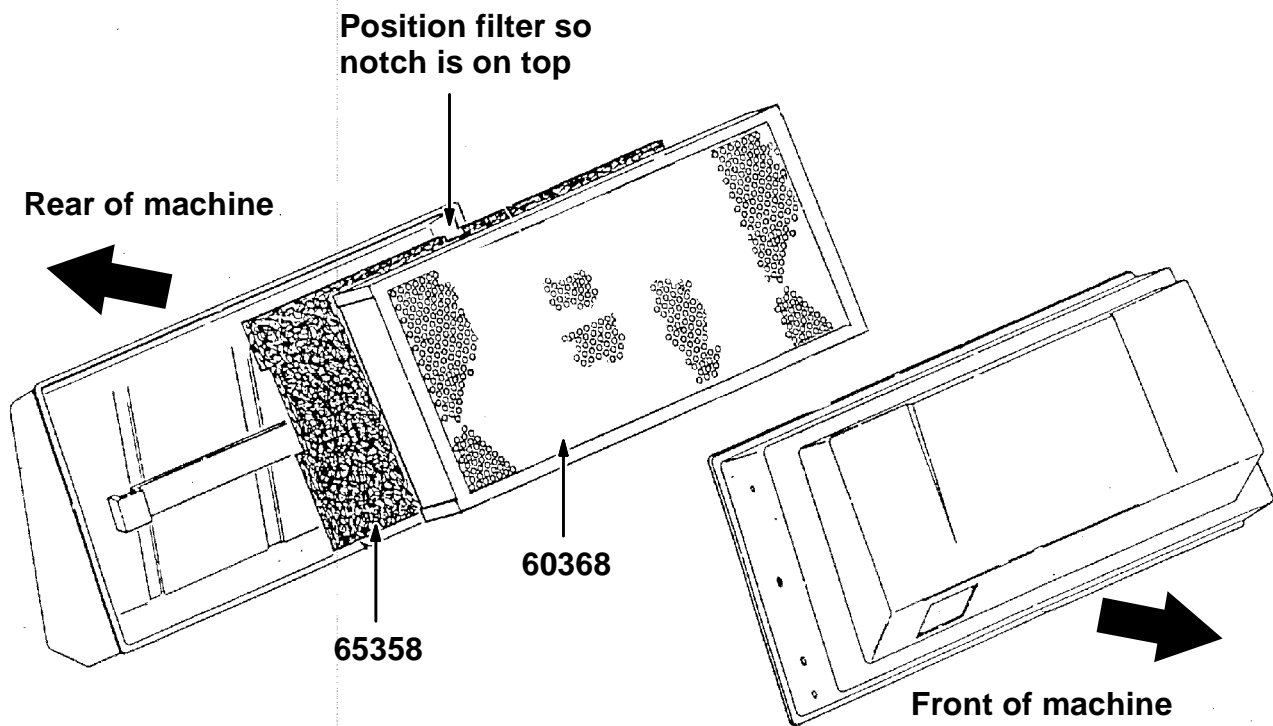


FIG. 2 - CARPET LINT DUAL FILTER ASSEMBLY

DUAL FILTER ASSEMBLY INSTALLATION:

1. Push the filter retention latch upward and slide the filter into place on the filter base in the filter compartment.

NOTE: Check that the arrows on the filter point to the front of the machine. (Refer to FIG. 4)

2. Release the filter latch.
3. Slide the filter retention bar down into the slotted retention brackets.
4. Lift the rear filter cover back into position.
5. Snap the two filter cover latches closed.

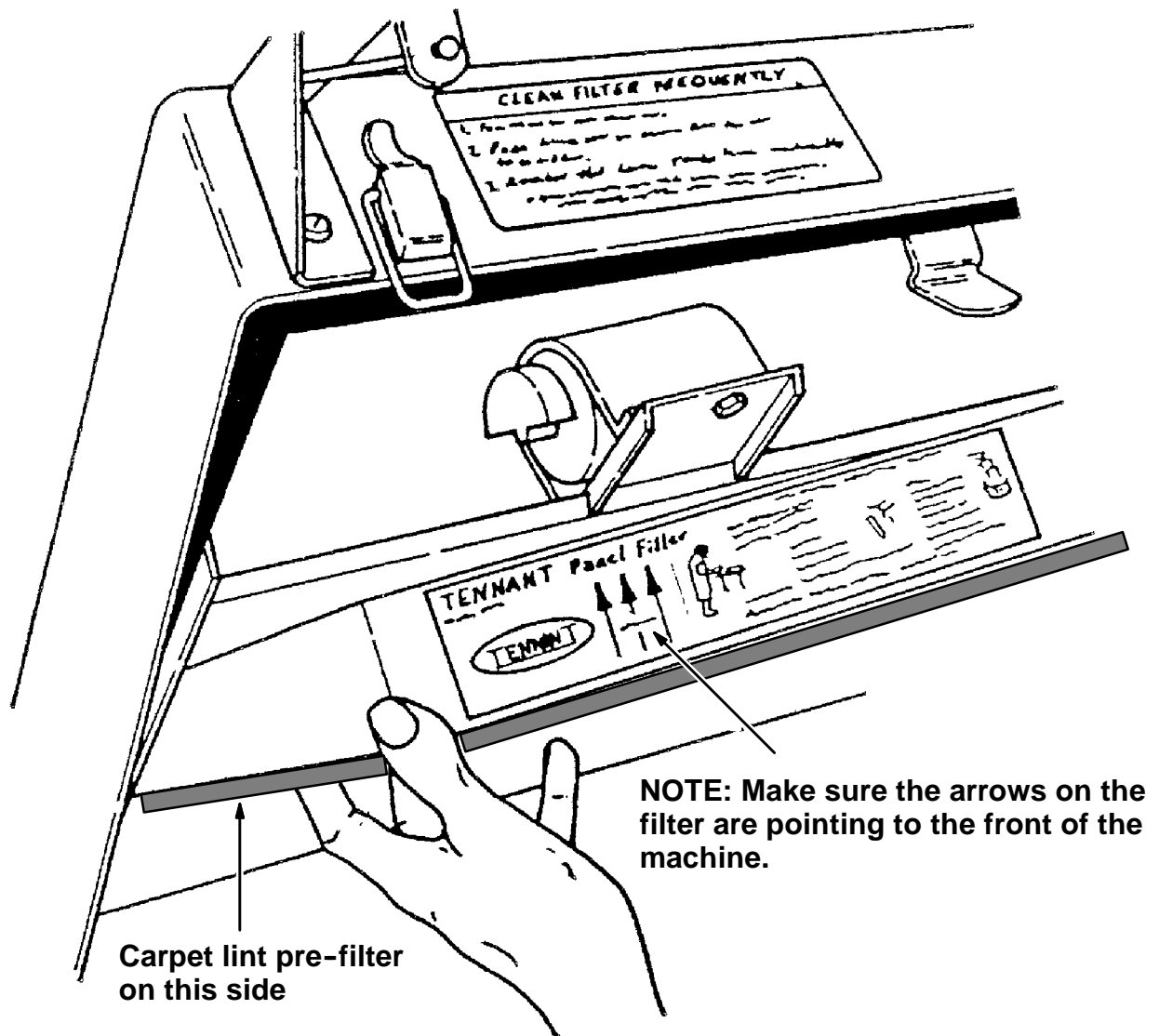


FIG. 3 - FILTER INSTALLATION

BILL OF MATERIALS FOR CARPET LINT DUAL FILTER KIT 398200

Ref.	TENNANT Part No.	Description	Qty.
1	65358	Screen, pre-filter (for carpet lint)	1
2	60368	Element, filter w/velcro strips	1

NOTE: To replace velcro strips on filter element 60368, order TENNANT part no. 32957, qty. 9

TENNANT COMPANY
P. O. Box 1452
Minneapolis, MN 55440-1452