



INSTRUCTION BULLETIN

No. 340441

Machine: 7100/EZ Rider

Published: 1-01/00

System: SCRUBBING

NOTE: DO NOT DISCARD the Parts List from the Instruction Bulletin. Place the Parts List in the appropriate place in your machine manual for future reference. Retaining the Parts List will make it easier to reorder individual parts and will save you the cost of ordering an entire kit.

NOTE: Numbers in parenthesis () are reference numbers for parts listed in Bill of Materials.

Installation instructions for kit number 391031, 391033, 391037, 391039 and 391029

SYNOPSIS / PROBLEM:

This kit contains the parts needed to install/replace the scrub head kits on the model 7100/EZ Rider scrubbers.

Please follow step-by-step instructions.

SPECIAL TOOLS / CONSIDERATIONS: NONE

(Estimated time to complete: 2 hours)

PREPARATION:

(Refer to FIG. 1 thru 7)

FOR SAFETY: Before leaving or servicing machine, stop on level surface and set parking brake. Then turn off machine and remove key.

1. Check that the solution tank on the machine is empty.
2. Turn the machine power on. Press the scrub switch to lower the scrub head. Turn the machine power off when the scrub head is lowered to the floor.
3. Disconnect the scrub head actuator lift tool from the scrub head. Retain the clevis pin and cotter pin for reassembly. (Refer to FIG. 1 and 2)
4. Turn the machine power on, and raise the lift actuator once it is disconnected.
5. Turn the machine power off when the lift actuator is raised.
6. Disconnect battery cables from machine.



WARNING: Always disconnect battery cables from machine before working on electrical components.

SCRUB HEAD REMOVAL

(Refer to FIG. 1 thru 7)

1. Disconnect and tie up the stabilizer bars from each side of the scrub head. (Refer to FIG. 1)

NOTE: Do not attempt to disassemble or adjust the length of the stabilizer bars to remove them. Remove the nuts mounting the ends to the scrubhead for disassembly. Retain hardware for reassembly.

2. Locate the lift channel underneath the machine, connecting the scrub head to the machine frame. (Refer to FIG. 1,2 and 5)

3. Remove the front clevis pin from the lift channel, disconnecting the lift channel from the machine frame. Retain the clevis pin, washer and cotter pin for reassembly.
(Refer to FIG. 2 and 5)
4. Disconnect the solution hose from the plastic tee fitting on the scrub head. (Refer to FIG. 3)
5. Disconnect the scrub brush motors from the main wiring harness. (Refer to FIG. 3 and 4)
6. Block the rear tires. Jack up the front of the machine, and carefully slide the scrub head assembly out from underneath the right side of the machine.
7. Slide the new scrub head assembly under the machine.

FOR SAFETY: When servicing machine, block machine tires before jacking machine up. Jack machine up at designated locations only. Block machine up with jack stands. Use a jack that will support the weight of the machine.

SCRUB HEAD INSTALLATION

(Refer to FIG. 1 thru 5)

1. Slide the new scrub head assembly under the machine.
2. Position the actuator lift tool over the tool lift channel with the longer side on the left hand side of the machine. Mount the scrub head lift channel to the machine frame with the longer set aside clevis pins washers and cotter pin. Release the link arms, and reconnect to each side of the scrub head. (Refer to FIG 1,2 and 5)
3. Turn the machine power on, and slowly lower the scrub head lift actuator. Connect the scrub head actuator lift tool to the scrub head lift channel with the set aside clevis pin and cotter pin. (Refer to FIG 1,2 and 5)
4. Reconnect the solution hose to the tee fitting on the scrub head. (Refer to FIG 3)
5. Reconnect the scrub motors to the main wire harness. (Refer to FIG 3 and 4)
6. Turn the machine power on.
7. Check the lift assembly and scrub assemblies for proper operation.

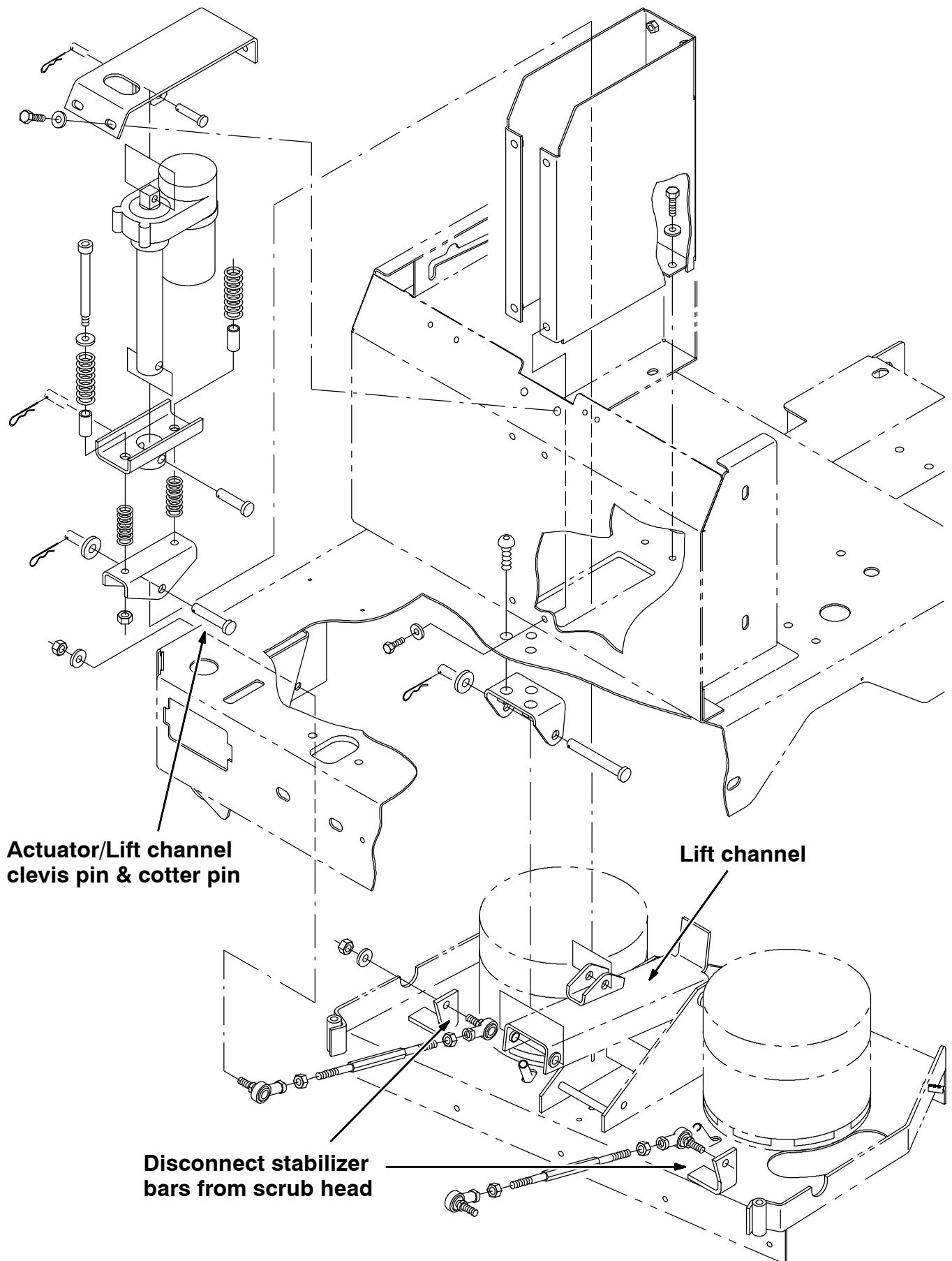


FIG. 1 - Scrub Head Lift Group, Standard

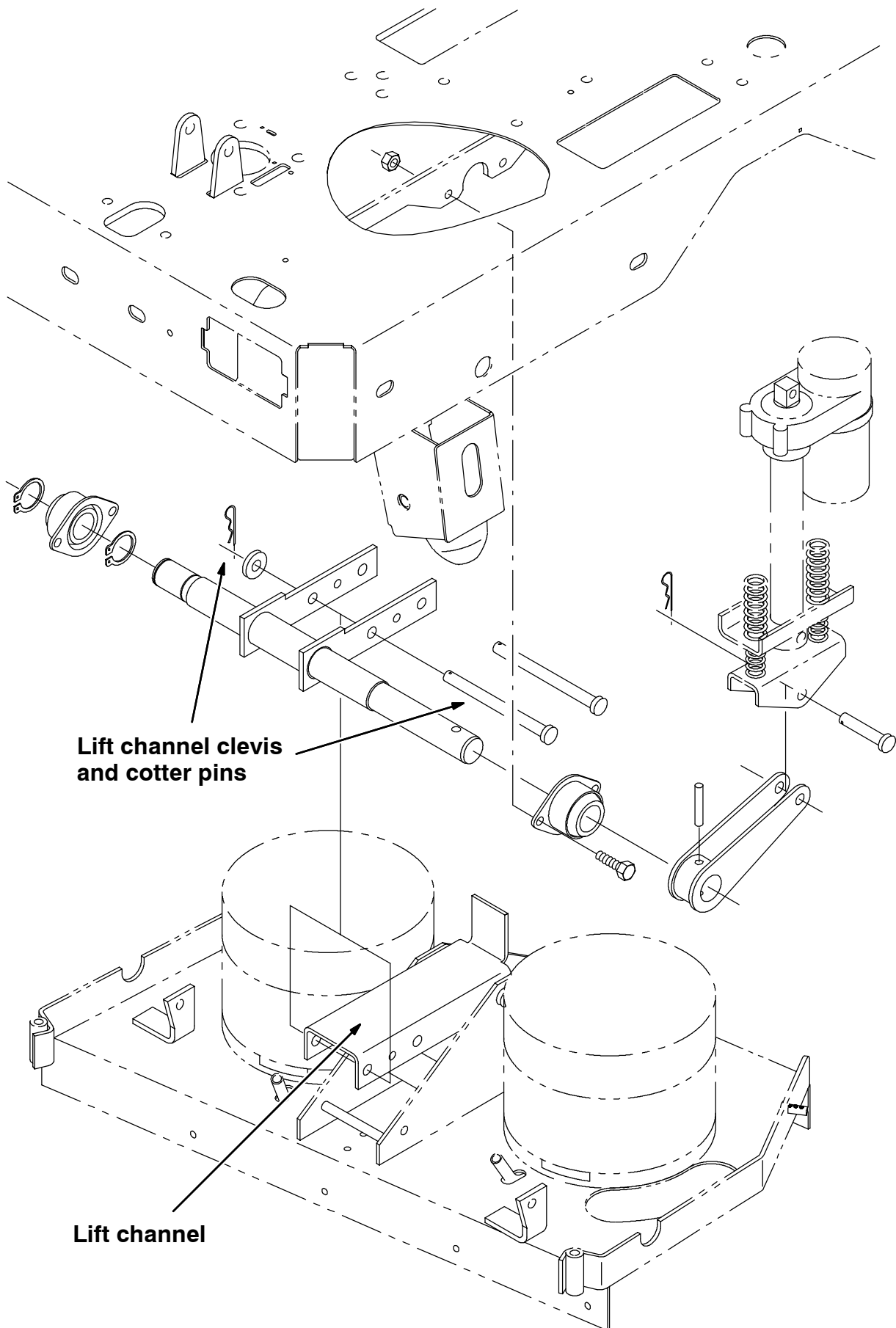


FIG. 2 - Scrub Head Lift Group, Rollout Battery

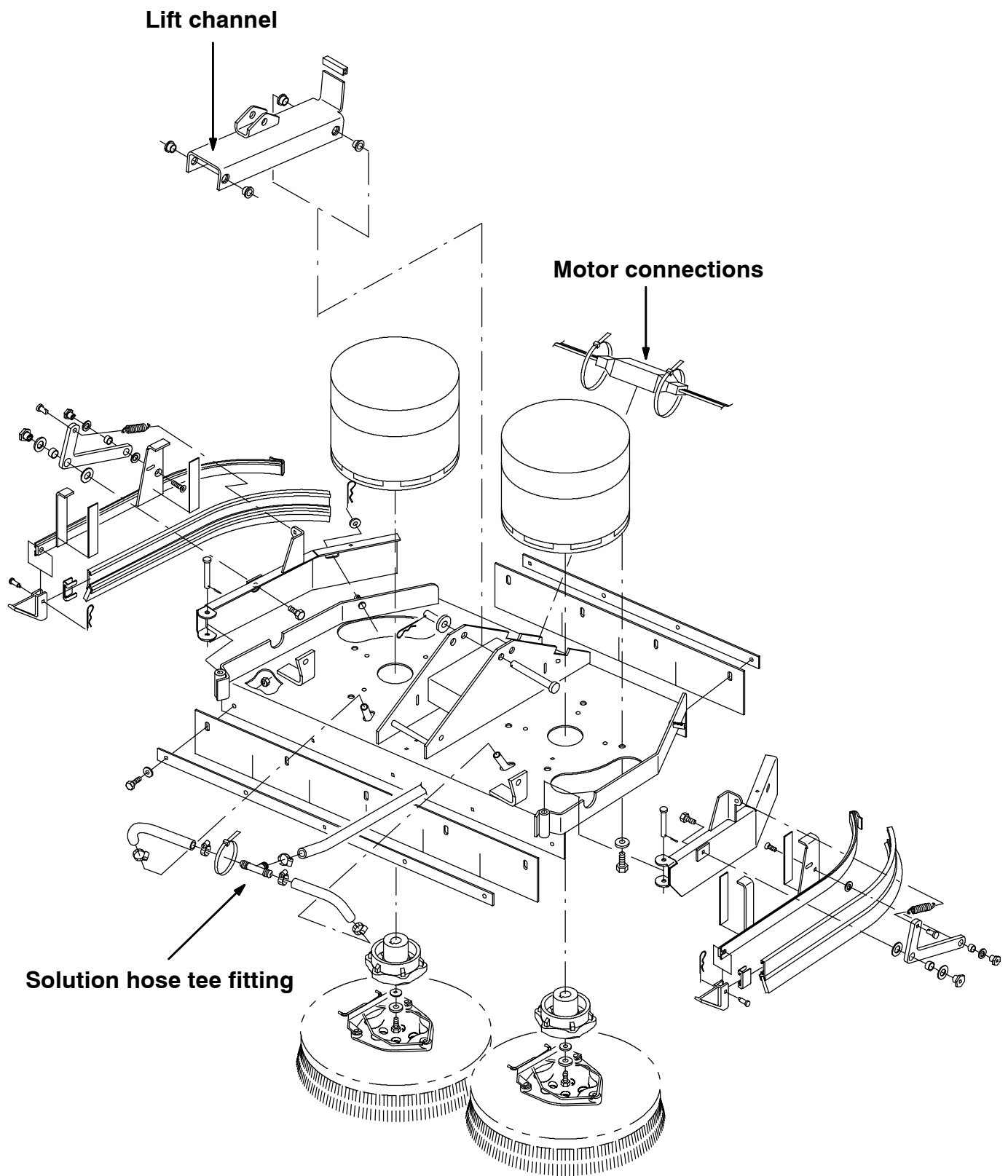


FIG. 3 - Disk Scrub Head Group

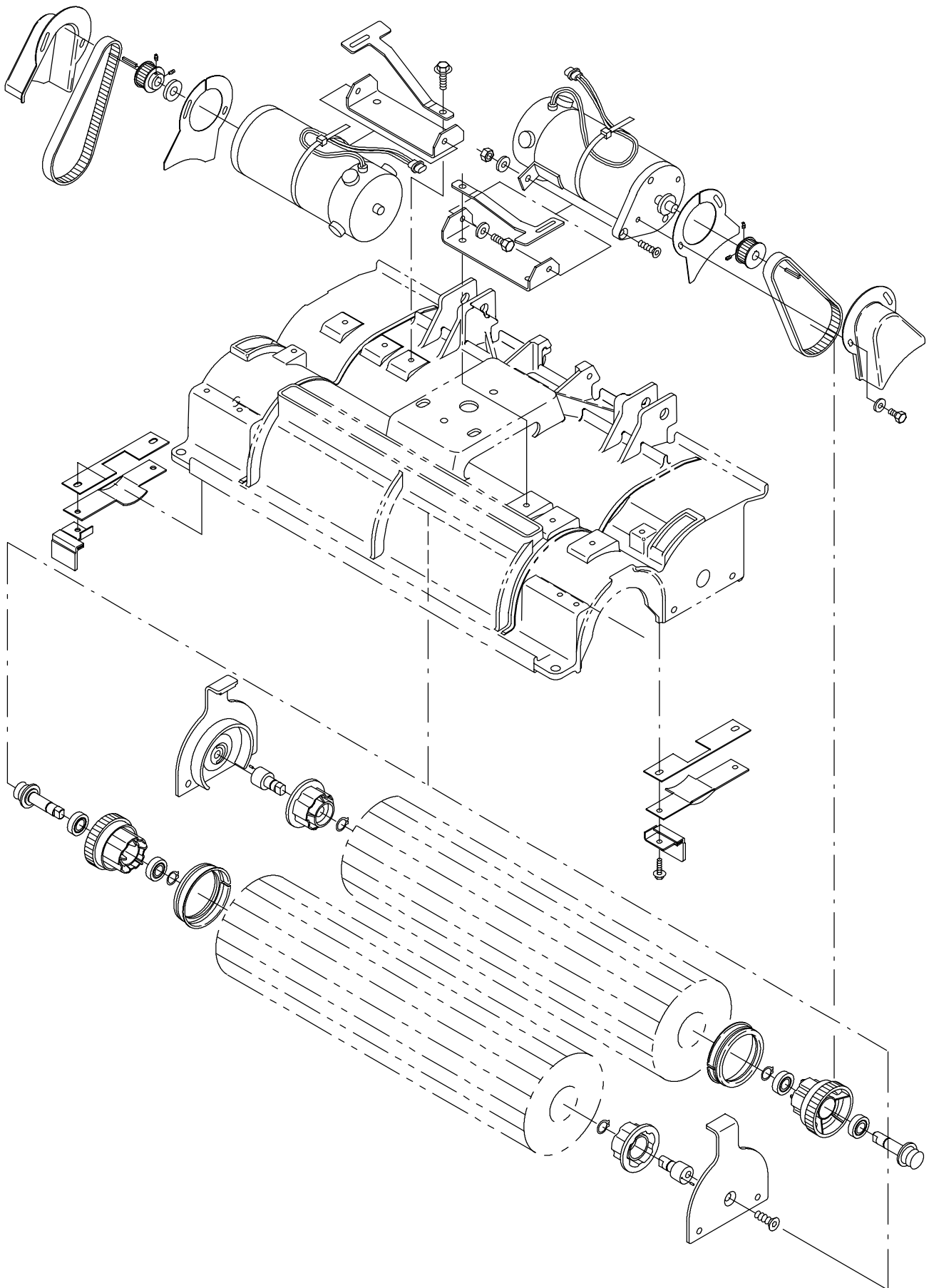


FIG. 4 - Cylindrical Scrub Head Drive Motor Group

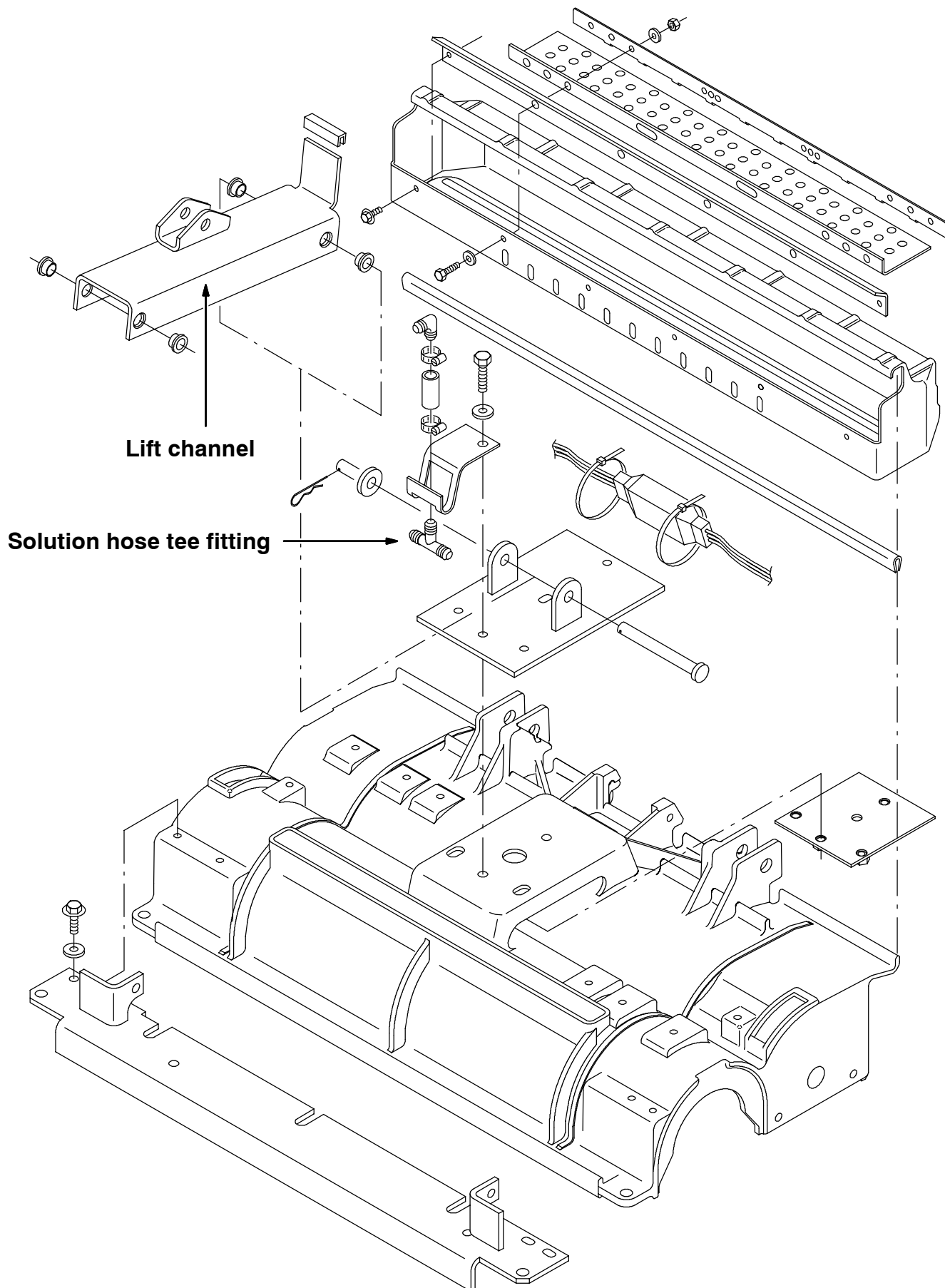


FIG. 5 - Cylindrical Scrub Head Frame Group

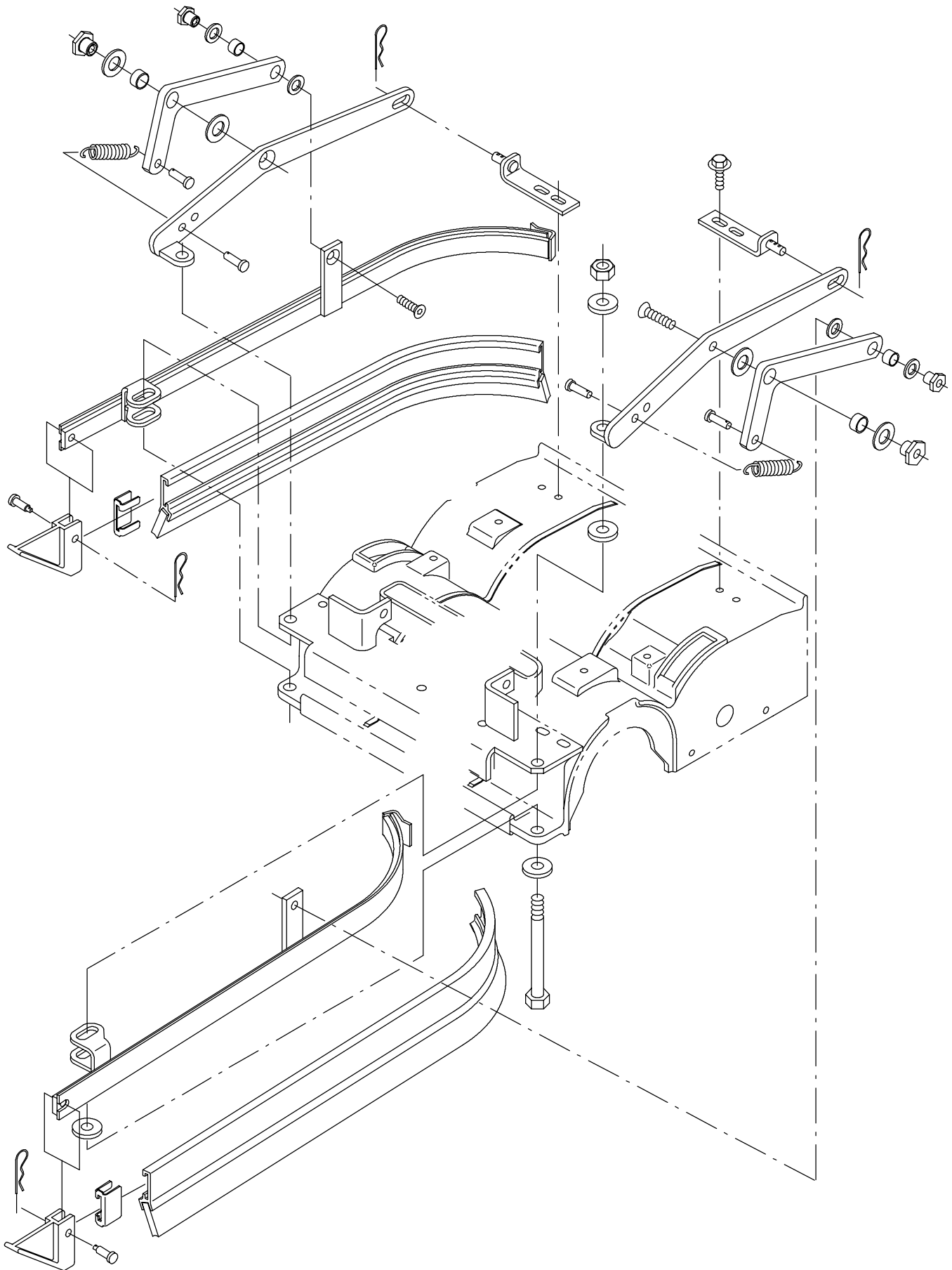


FIG. 6 - Cylindrical Scrub Head Squeegee Group

BILL OF MATERIALS FOR DISK SCRUB HEAD KIT 391031, 700MM

Ref.	TENNANT Part No.	Description	Qty.
1	391090	Head assy, disk, 700MM [7100]	1

BILL OF MATERIALS FOR CYL SCRUB HEAD KIT 391033, 700MM

Ref.	TENNANT Part No.	Description	Qty.
1	391091	Head assy, cyl, 700MM [7100/EZ Rider]	1

BILL OF MATERIALS FOR HD DISK SCRUB HEAD KIT 391037, 800MM

Ref.	TENNANT Part No.	Description	Qty.
1	391092	Head assy, disk, HD, 800MM [7100]	1

BILL OF MATERIALS FOR HD CYL SCRUB HEAD KIT 391039, 800MM

Ref.	TENNANT Part No.	Description	Qty.
1	391093	Head assy, cyl, 800MM [7100]	1

BILL OF MATERIALS FOR DISK SCRUB HEAD KIT 391029, 700MM

Ref.	TENNANT Part No.	Description	Qty.
1	391094	Head assy, disk, 700MM [7100/EZ Rider]	1

TENNANT COMPANY
P. O. Box 1452
Minneapolis, MN 55440-1452