



INSTRUCTION BULLETIN

No. 340439
Machine: 7300 / 8300
Published: 12-2009
Rev. 02

NOTE: DO NOT DISCARD the Parts List from the Instruction Bulletin. Place the Parts List in the appropriate place in the machine manual for future reference. Retaining the Parts List will make it easier to reorder individual parts and will save the cost of ordering an entire kit.

NOTE: Numbers in parenthesis () are reference numbers for parts listed in Bill of Materials.

Installation instructions for **kit numbers 387127 / 9006940**

SYNOPSIS:

This kit contains the parts needed install a positive solution control drain kit onto the recovery tank of 7300 / 8300 machines.

Please follow step-by-step instructions.

SPECIAL TOOLS / CONSIDERATIONS: NONE

(Estimated time to complete: 1 hour)

PREPARATION:

1. Completely empty the recovery tank.
2. Park the machine on a clean level surface, turn off the machine, remove the key, and set the parking brake.

FOR SAFETY: Before leaving or servicing machine, stop on level surface, turn off machine, and remove key.

INSTALLATION:

1. Remove cap assembly from the recovery tank drain. Discard the cap assembly.
2. Use three pan screws (8) and washers (7) to install the drain cap (6) to the ball valve (5). Refer to Fig. 1.
3. Install the gasket (9) and flat washer (10) onto the ball valve (5). Refer to Fig. 1.
4. Install the positive drain valve assembly assembled in the previous several steps onto the recovery tank drain. Refer to Fig. 1.
5. Use a hex screw (13) to attach the dust cap chain (4) to the side bumper (11). Refer to Fig. 1.
6. Use two hex screws (15), two flat washers (14), and two hex nuts (12) to install the side bumper (11) onto the left rear corner of the machine. Refer to Fig. 1.
7. Install the dust cap chain (4) onto the ring on the dust cap (1). Refer to Fig. 1.
8. Install the dust cap (1) onto the ball valve (5). Refer to Fig. 1.
9. Fill the recovery tank with water and check the newly installed drain assembly for leaks.
10. Install the hose (2) onto the hose coupler fitting (3). Refer to Fig. 1.
11. Store the positive solution drain hose assembled in the previous step inside the battery compartment.
12. To drain the recovery tank: Remove the cap (1) from the ball valve (5), connect the hose drain hose to the ball valve, position the hose next to a drain, and use the handle to open the ball valve / drain the recovery tank. Refer to Fig. 1.

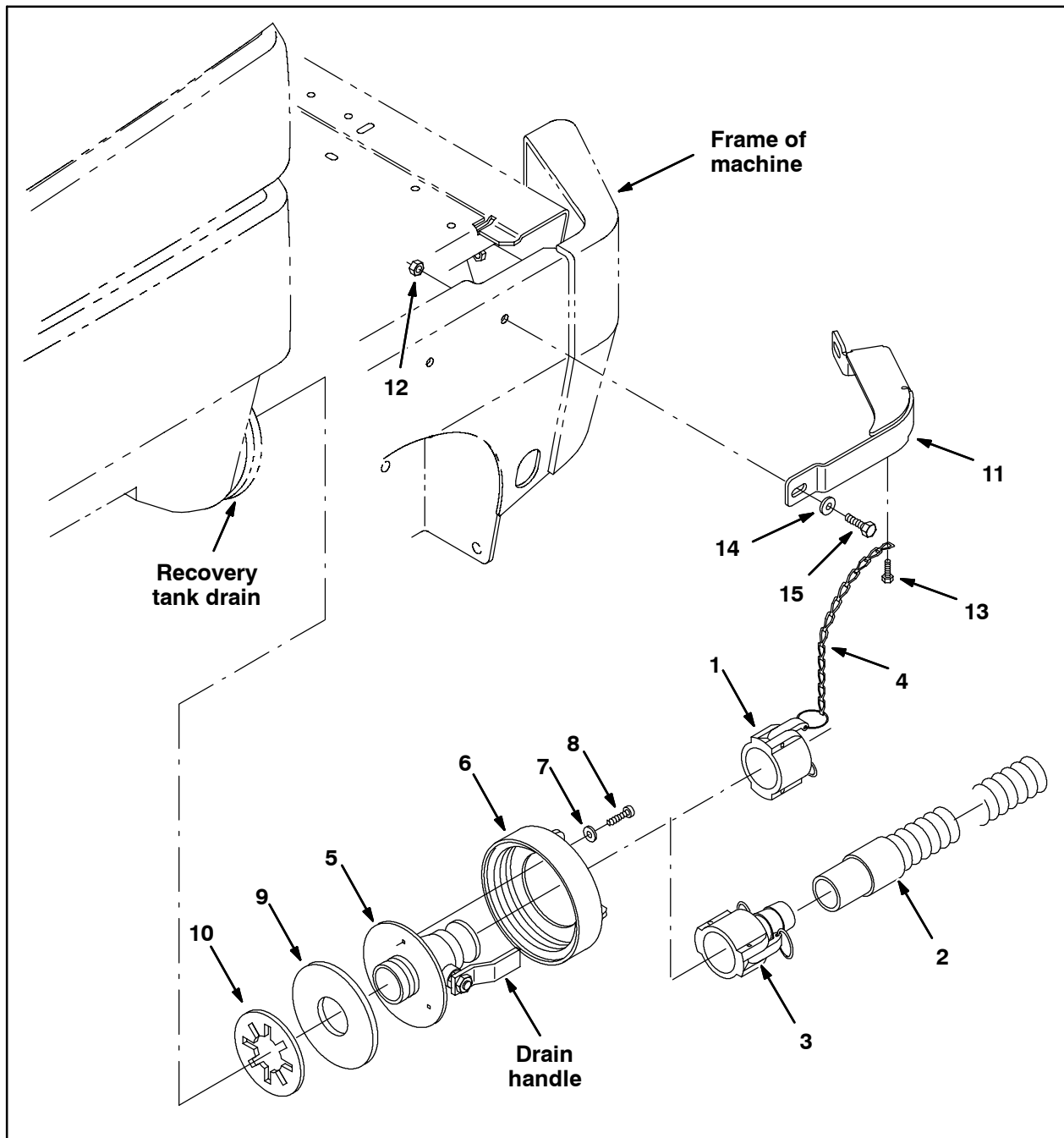


FIG. 1

Bill of Materials for Drain Kit, CI [Posi Cntrl/Recvy Only] - 387127

| Ref. | Tennant Part No. | Description | Qty. |
|------|---------------------|---------------------------------------|------|
| ▽ | 387127 | DRAIN KIT, CI [POSI CNTRL/RECVY ONLY] | 1 |
| ▲ | 1 48733 | CAP, DUST, CPLG, WATER, 2.16ID | 1 |
| ▲ | 2 75635 | HOSE ASSY, W/1CUFF, 1.5D 120L 1.5/ | 1 |
| ▲ | 3 48734 | FITTING, COUPLER, HOSE, SHANK, FEM | 1 |
| ▲ | 4 19903 | CHAIN, SASH, 35, 07.2L 13 LINK | 1 |
| ▲ | 5 1049269 | VALVE, BALL, DRAIN, 1.50ID, SS, RWK | 1 |
| ▲ | 6 23456 | CAP, TANK, DRAIN, 6.17 THREAD PYE | 1 |
| ▲ | 7 01684 | WASHER, FLAT, 0.27B 0.69D .05, SS | 3 |
| ▲ | 8 09744 | SCREW, HEX, M6 X 1.00 X 12, SS | 3 |
| ▲ | 9 1031700 | GASKET, .19, 2.00ID 5.38OD [BUNA] | 1 |
| ▲ | 10 20932 | WASHER, FLAT, 1.91B 4.38D .13, PYE | 1 |
| ▲ | 11 387213 | BUMPER, SIDE, RECVY [POSI DRAIN] | 1 |
| ▲ | 12 07792 | NUT, HEX, FLNG, M10 X 1.50 | 2 |
| ▲ | 13 74455 | SCREW, HEX, M6 X 1.00 X 12, FMG | 1 |
| ▲ | 14 32492 | WASHER, FLAT, 0.38, STD | 2 |
| ▲ | 15 39284 | SCREW, HEX, M10 X 1.50 X 35, 8.8 | 2 |
| ▲ | 16 32691 | ADHESIVE, THREAD, 50.0ML [242BLU] | 1 |

Bill of Materials for Drain Kit, CI [Posi Cntrl/Recvy Only] - 9006940

| Ref. | Tennant Part No. | Description | Qty. |
|------|---------------------|--|------|
| ▽ | 9006940 | DRAIN KIT, CI [POSI CNTRL/RECVY ONLY] | 1 |
| ▲ | 1 48733 | CAP, DUST, CPLG, WATER, 2.16ID | 1 |
| ▲ | 2 75635 | HOSE ASSY, W/1CUFF, 1.5D 120L 1.5/ | 1 |
| ▲ | 3 48734 | FITTING, COUPLER, HOSE, SHANK, FEM | 1 |
| ▲ | 4 19903 | CHAIN, SASH, 35, 07.2L 13 LINK | 1 |
| ▲ | 5 1049269 | VALVE, BALL, DRAIN, 1.50ID, SS, RWK | 1 |
| ▲ | 6 23456 | CAP, TANK, DRAIN, 6.17 THREAD PYE | 1 |
| ▲ | 7 01684 | WASHER, FLAT, 0.27B 0.69D .05, SS | 3 |
| ▲ | 8 09744 | SCREW, HEX, M6 X 1.00 X 12, SS | 3 |
| ▲ | 9 1031700 | GASKET, .19, 2.00ID 5.38OD [BUNA] | 1 |
| ▲ | 10 20932 | WASHER, FLAT, 1.91B 4.38D .13, PYE | 1 |
| ▲ | 11 1056878 | BUMPER, SIDE, RECVY, GRAY [POSI DRAIN] | 1 |
| ▲ | 12 07792 | NUT, HEX, FLNG, M10 X 1.50 | 2 |
| ▲ | 13 74455 | SCREW, HEX, M6 X 1.00 X 12, FMG | 1 |
| ▲ | 14 32492 | WASHER, FLAT, 0.38, STD | 2 |
| ▲ | 15 39284 | SCREW, HEX, M10 X 1.50 X 35, 8.8 | 2 |
| ▲ | 16 32691 | ADHESIVE, THREAD, 50.0ML [242BLU] | 2 |

TENNANT COMPANY
P. O. Box 1452
Minneapolis, MN 55440-1452