



# INSTRUCTION BULLETIN

No. 340427  
Machine: 7100  
Published: 10-00/00  
System: OPTIONS

**NOTE: DO NOT DISCARD the Parts List from the Instruction Bulletin. Place the Parts List in the appropriate place in your machine manual for future reference. Retaining the Parts List will make it easier to reorder individual parts and will save you the cost of ordering an entire kit.**

*NOTE: Numbers in parenthesis ( ) are reference numbers for parts listed in Bill of Materials.*

Operation instructions for kit number 391049

## SYNOPSIS / PROBLEM:

This kit contains the battery rollout cart for the battery rollout kit on the 7100 model scrubber. Please follow step-by-step instructions.

## SPECIAL TOOLS / CONSIDERATIONS: NONE

(Estimated time to complete: 0 hour [battery rollout cart is pre-assembled])

## PREPARATION:

(Refer to FIG. 1)

**FOR SAFETY: Before leaving or servicing machine, stop on level surface and set parking brake. Then turn off machine and remove key.**



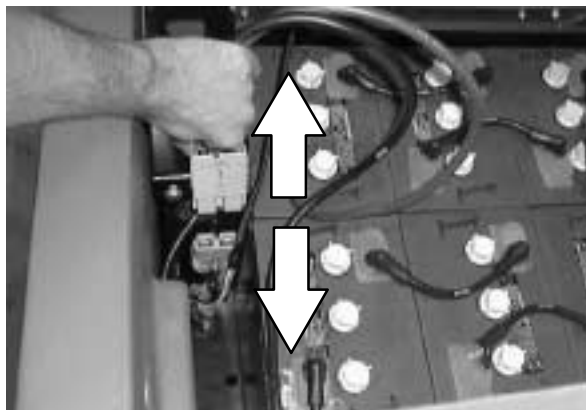
**WARNING: Always disconnect battery cables from machine before working on electrical components.**

## BATTERY CART OPERATION:

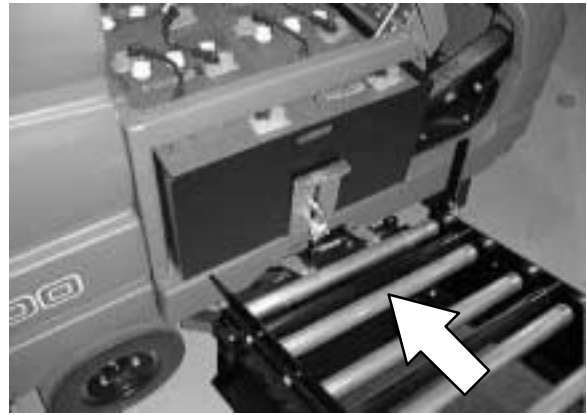
1. Drive the machine to a flat, dry surface.
2. Turn the machine power off and set the parking brake.

**FOR SAFETY: Before leaving or servicing machine, stop on level surface, set parking brake, turn off machine, and remove key.**

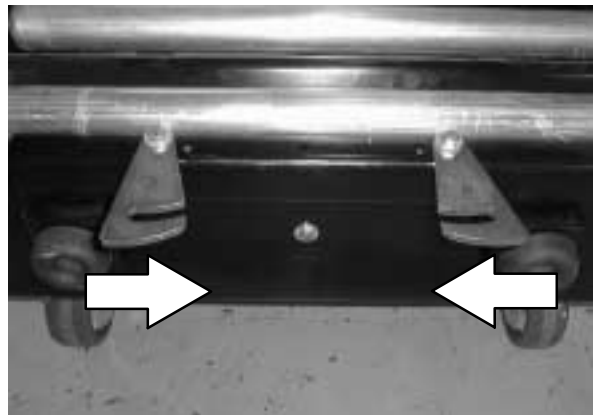
3. Lift the operator seat to access the batteries. The support arm automatically engages when the seat is lifted all the way up.
4. Unplug the machine connector from the batteries.



5. Push the battery cart to the right hand side of the machine. Line up the battery cart locks and the tabs on the machine. Push the battery cart forward.



6. Lock the battery cart to the machine by closing the battery cart locks around the machine tabs.



7. Set the battery cart floor lock by stepping down on the left side of floor lock.



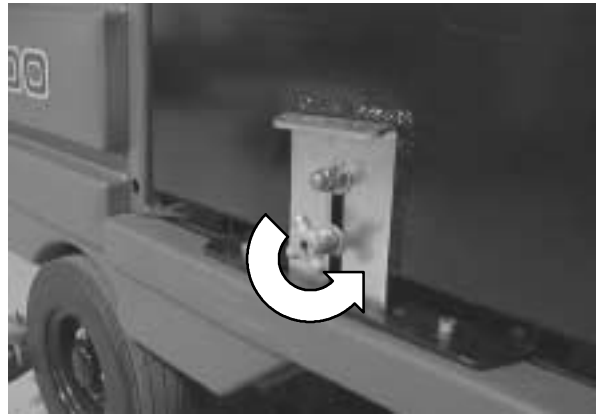
8. Adjust the battery cart rollers before rolling out the batteries. The battery cart rollers must be the same height as the machine battery rollers.

Raise battery cart rollers: With a wrench, loosen the jam nut and turn the bolt clockwise. Then tighten the jam nuts.

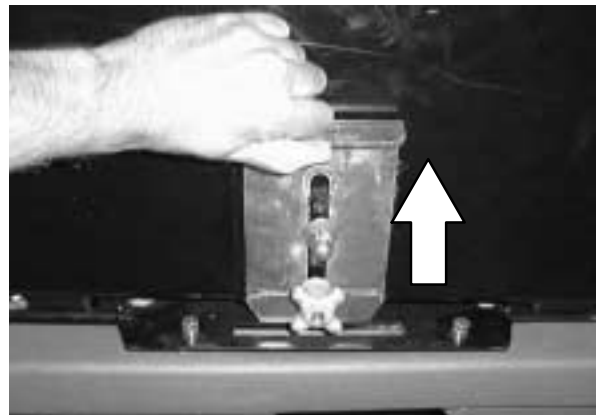
Lower battery cart rollers: With a wrench, loosen the jam nut and turn the bolt counter-clockwise. Then tighten the jam nuts.



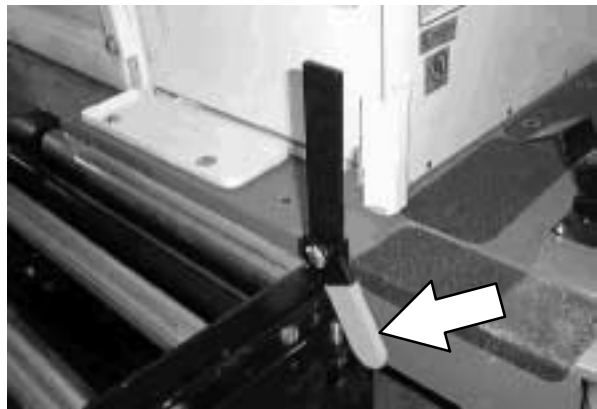
9. Turn the knob on the machine's battery latch plate counter-clockwise until the latch plate is free to move.



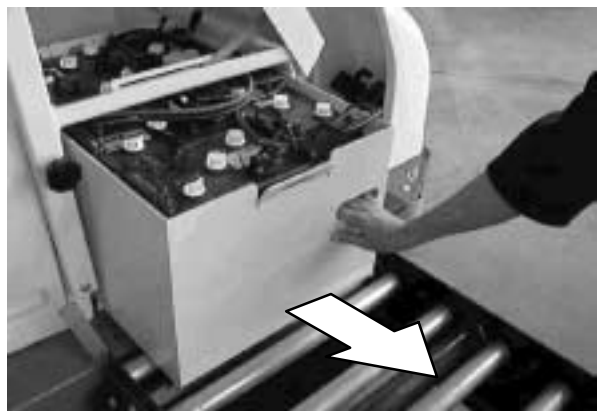
10. Raise the battery latch plate up out of the securing slot.



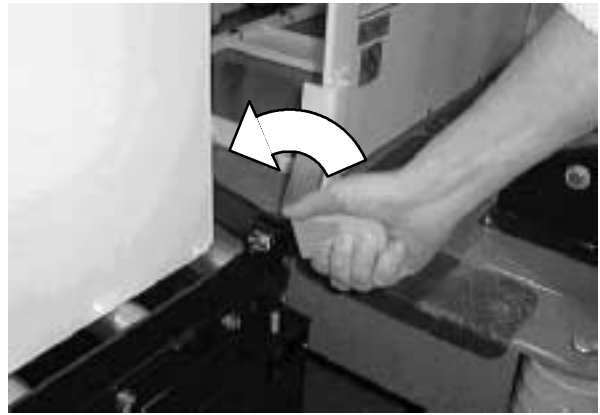
11. Raise the cart's battery stop bar by pushing down on the handle.



12. Grab the battery case slot and pull the battery case onto the battery cart.



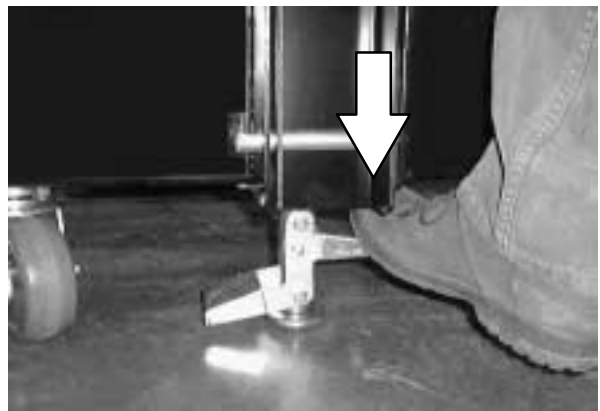
13. Lower the cart's battery stop bar by pulling up on the handle. This will keep the batteries from rolling off the cart when moving.



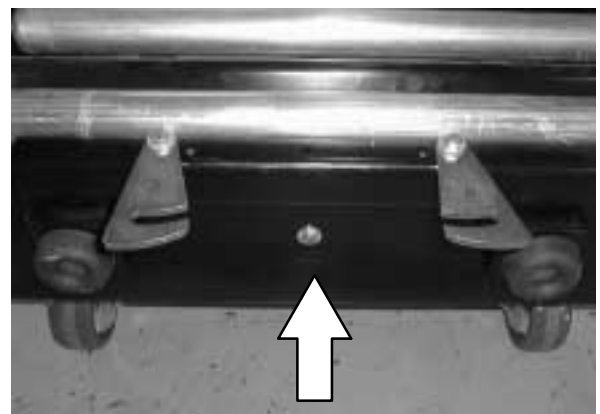
14. Release the battery cart from the machine by pushing the battery cart locks towards the outside of the battery cart.



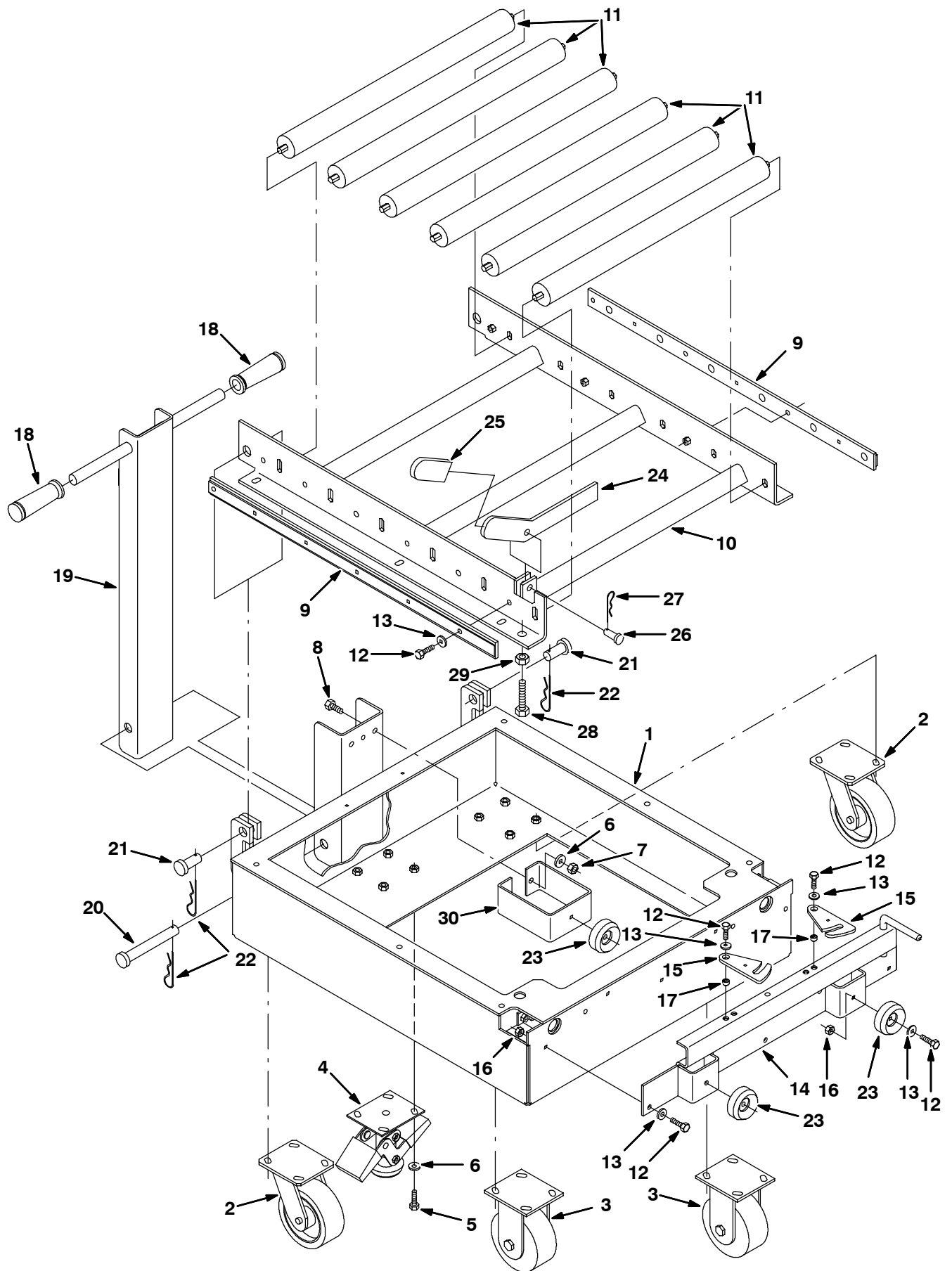
15. Release the battery cart floor lock. To release floor lock, step down on the right side of floor lock.



16. Pull the battery cart away from the machine.



17. Reverse the previous steps to re-install batteries in the machine.



**FIG. 1 - ROLLOUT BATTERY CART ASSEMBLY**

# **BILL OF MATERIALS FOR ROLLOUT BATTERY CART ASSEMBLY 391049**

<b>Ref.</b>	<b>TENNANT Part No.</b>	<b>Description</b>	<b>Qty.</b>
1	390947	Frame wldt, cart, battery	1
2	222467	Caster, 5.0D wheel	2
3	369373	Caster, battery, cart	2
4	369374	Lock, floor	1
5	03192	Screw, hex, M10 X 1.5 X 30, 8.8	20
6	32492	Washer, flt, 0.38 std	22
7	41430	Nut, hex, lock, M10 X 1.5, NI	2
8	39283	Screw, hex, M10 X 1.5 X 25, 8.8	2
9	369466	Cap, roller shaft	2
10	369462	Frame wldt, mtg, roller	1
11	369371	Roller	6
12	39277	Screw, hex, M08 X 1.25 X 25, 8.8	22
13	32491	Washer, flt, 0.31 std	22
14	391157	Bracket wldt, mtg, latch, R/O	1
15	391162	Plate, latch, battery, R/O, cart	2
16	08709	Nut, hex, lock, M08 X 1.25, NI	8
17	222516	Sleeve	2
18	222648	Grip, handle, round	2
19	369470	Handle wldt, battery cart	1
20	54660	Pin, clevis, 0.75 D X 5.50l	1
21	02141	Pin, clevis, 0.75 D X 4.69l	2
22	55094	Pin, hair cotter, 0.75 D 0.148 wir	3
23	369481	Bumper, rbr, 2.5d 1.00t 0.50h	3
24	369496	Bar, flt, stop, battery, 0.31	1
25	385612	Grip, handle	1
26	58078	Pin, clevis, 0.50 D X 1.25l	1
27	21120	Pin, hair cotter, 0.43 D 0.079 wir	1
28	06416	Screw, hex, M12 X 1.75 X 50, fl	2
29	39313	Nut, hex, std, M12 X 1.75	2
30	391167	Bracket, stop, battery, R/O	1

TENNANT COMPANY  
P. O. Box 1452  
Minneapolis, MN 55440-1452