



# INSTRUCTION BULLETIN

No. 340416  
Machine: 7100  
Published: 4-01/01  
System: OPTIONS

**NOTE: DO NOT DISCARD the Parts List from the Instruction Bulletin. Place the Parts List in the appropriate place in your machine manual for future reference. Retaining the Parts List will make it easier to reorder individual parts and will save you the cost of ordering an entire kit.**

*NOTE: Numbers in parenthesis ( ) are reference numbers for parts listed in Bill of Materials.*

Installation instructions for kit number 391051

## SYNOPSIS / PROBLEM:

This kit contains the parts needed to install a V-Mop kit on the model 7100 scrubber.  
Please follow step-by-step instructions.

## SPECIAL TOOLS / CONSIDERATIONS: NONE

(Estimated time to complete: 1 hour)

## PREPARATION:

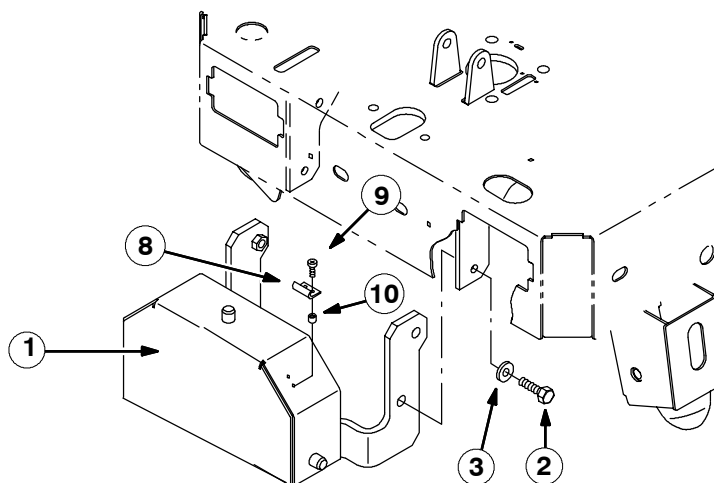
(Refer to FIG. 1 thru 7)

**FOR SAFETY: Before leaving or servicing machine, stop on level surface and set parking brake. Then turn off machine and remove key.**

## INSTALLATION:

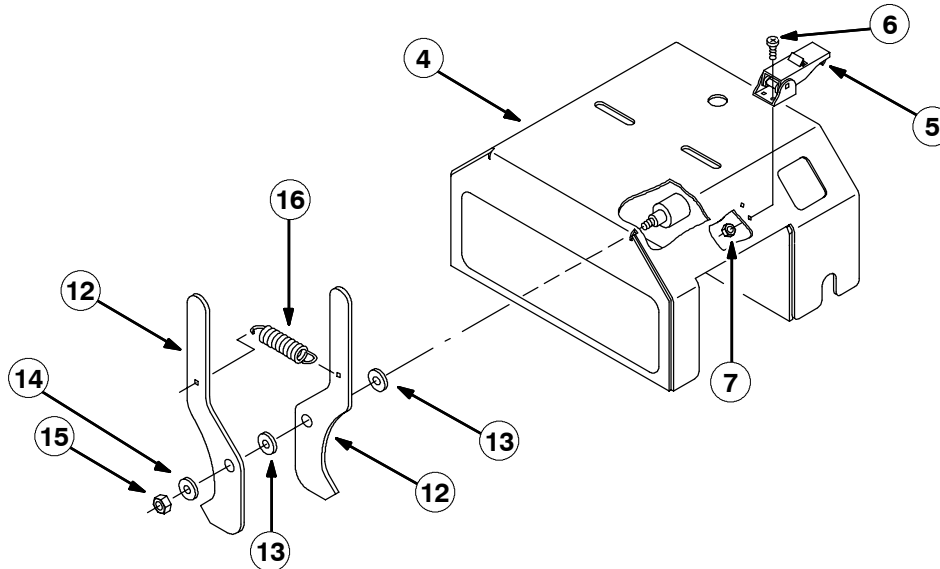
(Refer to FIG. 1 thru 7)

1. Disconnect the front bumper mount (1) from the main housing (4). (Refer to FIG. 1 and 7)
2. Mount the front bumper mount (1) to the front end of the machine with four hex screws (2) and flat washers (3), as shown in figure 1. (Refer to FIG. 1 and 7)
3. Install the keepers (8) and spacers (10) to both sides of the front bumper mount (1) with pan screws (9). (Refer to FIG. 1 and 7)



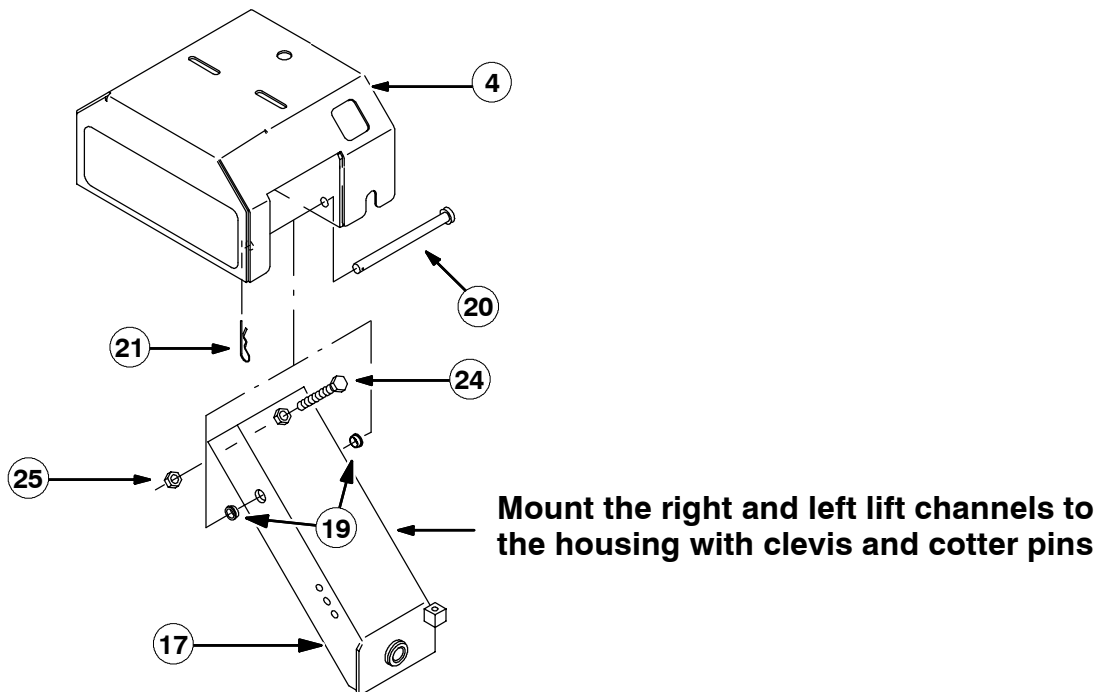
**FIG. 1 - Front bumper mount installation**

4. Install both latch plate release levers (12) inside the weldment housing (4) with two thrust bearings (13), washer (14), lock nut (15) and extension spring (16). (Refer to FIG. 2 and 7)
5. Install mounting latches (5) to both sides of the weldment housing (4) with pan screws (6) and lock nuts (7). (Refer to FIG. 2 and 7)



**FIG. 2 - Mounting latch installation**

6. Mount the left and right lift channel weldments (17) and (18) to the weldment housing (4) with clevis pins (20) and cotter pins (21). (Refer to FIG. 3 and 7)
7. Install adjustment bolts (24) with jam nuts (25) in through the top of the left and right channel weldment adjustment openings. (Refer to FIG. 3 and 7)

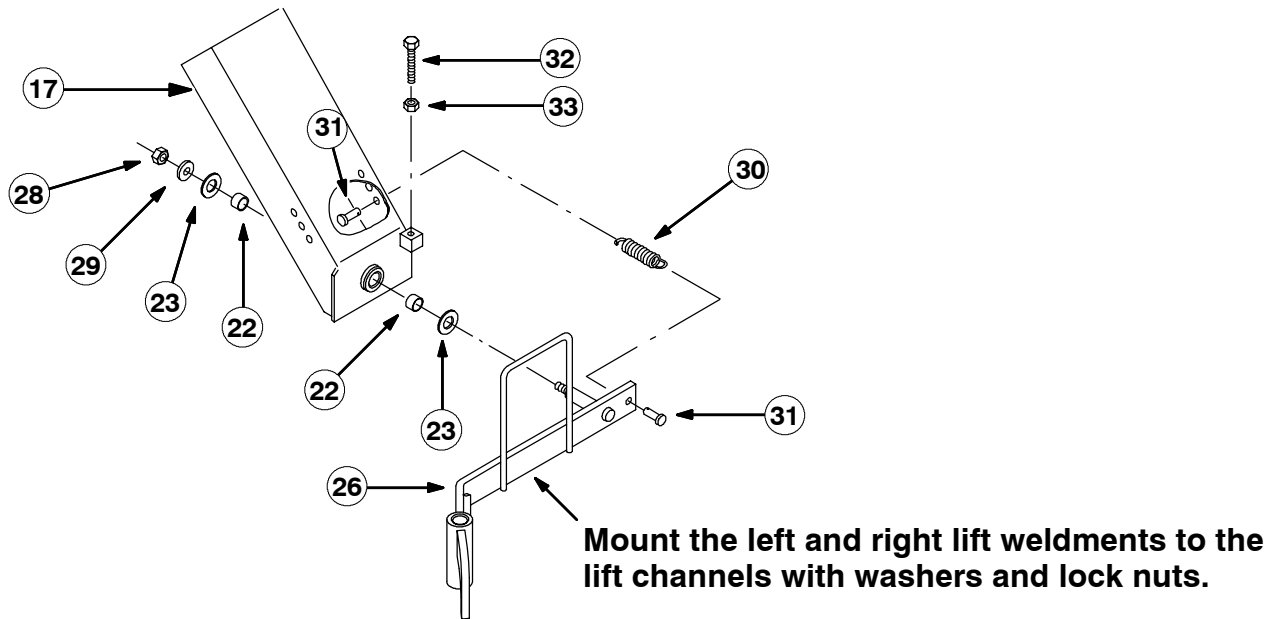


**FIG. 3 - Lift channel installation**

8. Mount the sub-assembly to the bumper weldment (1) and secure with the mounting latches (5).
9. Mount the left (26) and right (27) hand lift weldments to the left (17) and right (18) hand channel weldments with washers, 0.38 washers and lock nuts. (Refer to FIG. 4 and 7)

*NOTE: Only hand tighten the lift weldments so they move freely.*

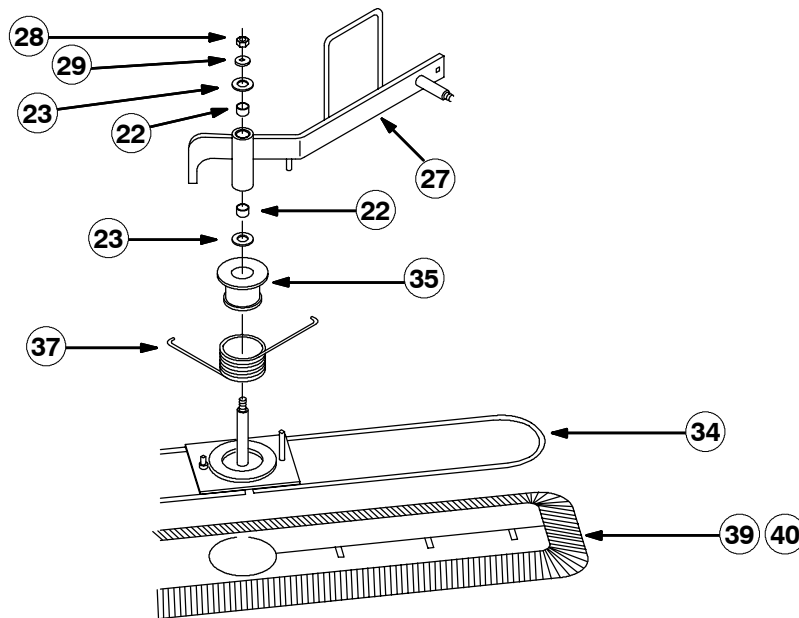
10. Install the stop bolt (32) and jam nut (33) in each channel weldment (17) and (18). (Refer to FIG. 4 and 7)
11. Install the extension spring (30) for each arm with clevis pins (31) in channel weldments and lift weldments. (Refer to FIG. 4 and 7)



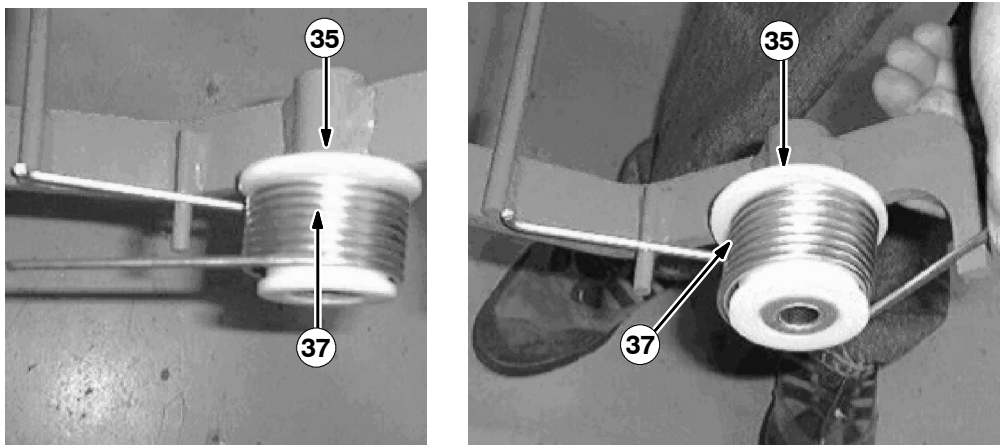
**FIG. 4 - Lift channel installation**

12. Install the mop frame weldment , torsion spring and spring spacers on each arm lift weldment with washers, 0.38 washers and lock nuts. (Refer to FIG. 5 thru 7)

*NOTE: There are right and left side torsion springs. Check fig. 6 for proper installation. Only hand tighten the mop frame weldments so they may move freely.*



**FIG. 5 - Mop frame installation**



**FIG. 6 - Mop frame spring installation**

13. Adjust the latches so the assembly is held securely to the bumper weldment when the latches are fastened.
14. Adjust the lift channel weldment adjustment bolts so the carriage floats about 1/8 to 1/4 inch off the ground.
15. Adjust the arm weldment adjustment bolts to level the steel carriage.
16. Once the carriage is level, mount the dust mops on the mop frame weldments.
17. Insert the dust mop heads (39) or (40) over the steel mop carriages (34), and secure them with fastening snaps.
18. Turn the machine power on and check the V-mop for proper operation.

TENNANT COMPANY  
P. O. Box 1452  
Minneapolis, MN 55440-1452

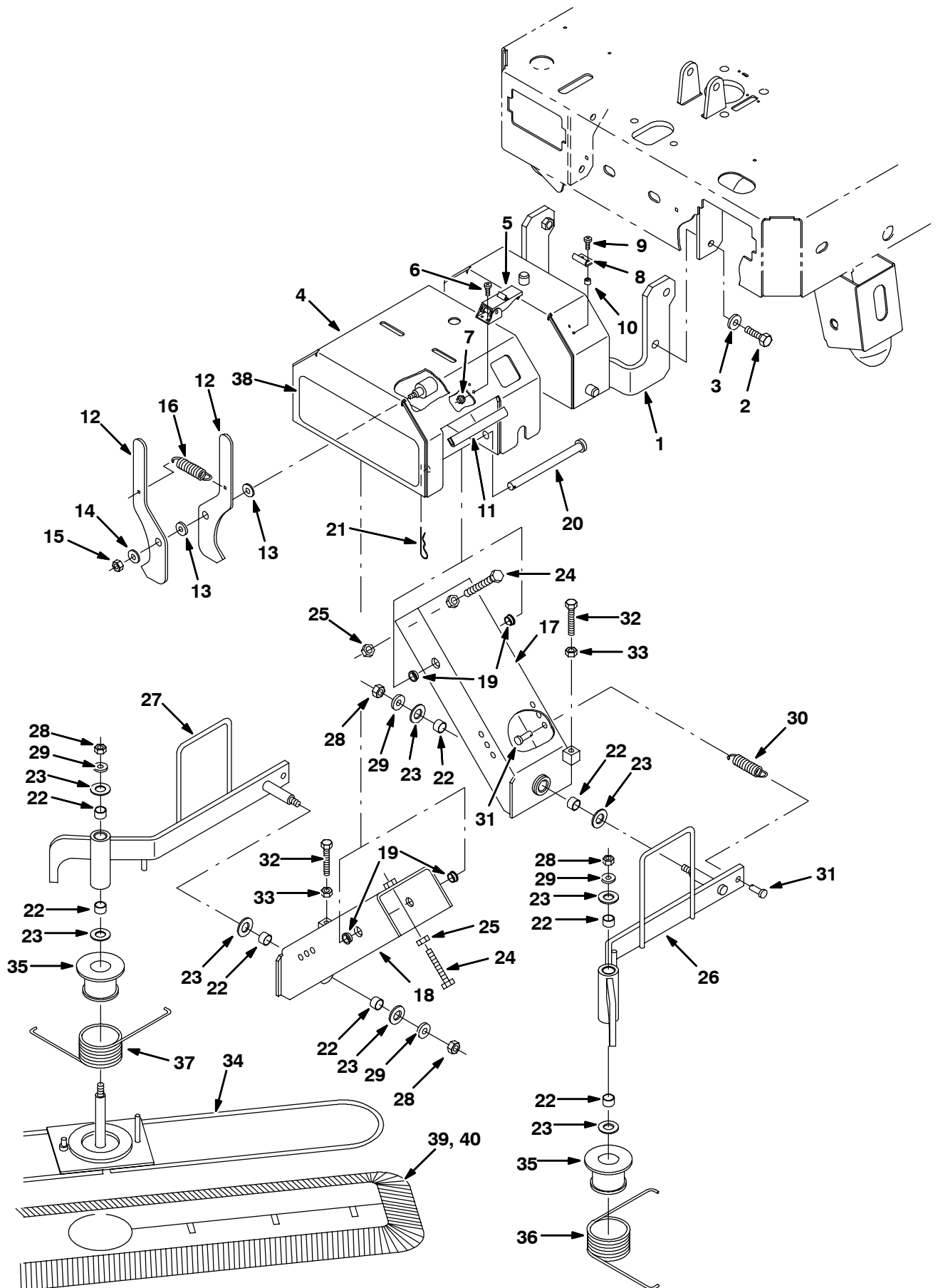


FIG. 7 - QUICKMOP™ KIT 391051

# **BILL OF MATERIALS FOR QUICK MOP™ KIT 391051**

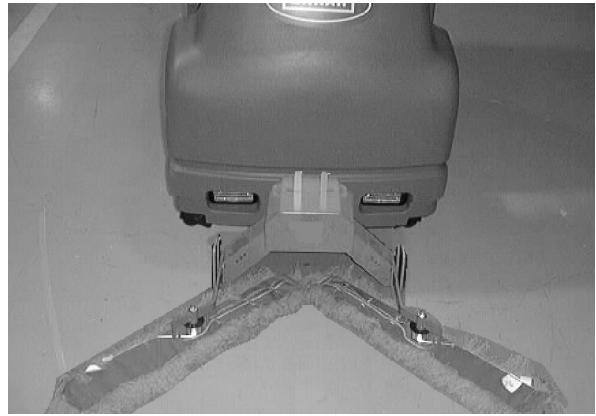
<b>Ref.</b>	<b>TENNANT Part No.</b>	<b>Description</b>	<b>Qty.</b>
1	391257	Bumper mount, V-Mop	1
2	77347	Screw, hex, M10 X 1.5 X 35, Ss	4
3	01686	Washer, flt, 0.38 Ss	4
4	384287	Housing wldt, Quick-Mop	1
5	384418	Latch, door	2
6	49697	Screw, pan, M04 X 0.7 X 10, Ss	4
7	02850	Nut, hex, lock, M04 X 0.7, NI	4
8	384419	Bracket, keeper	2
9	12323	Screw, pan, M04 X 0.7 X 20, Ss	4
10	65441	Spacer	4
11	391287	Molding, trim, pvc, 0.08-0.11 04.75l	2
12	81542	Plate, latch	2
13	86860	Bearing, thrust	2
14	32491	Washer, flt, 0.31 std	1
15	08709	Nut, hex, lock, M08 X 1.25, NI	1
16	87816	Spring, extn, 0.75od X 0.09wir, 2.5l	1
17	81541	Channel, wldt, lift, Lh	1
18	81540	Channel wldt, lift, Rh	1
19	15648	Bushing, flng, 0.50b 0.59d 0.38l	4
20	51225-1	Pin, clevis, 0.50D X 6.00l	2
21	02942	Pin, hair cotter, 0.62D 0.120wir	2
22	07449	Bushing, sleeve, 0.62b 0.72d 0.50l, Fgl	8
23	64425	Washer, thrust, 0.61b 1.25d 0.06, Fgl	8
24	76438	Screw, hex, M10 X 1.5 X 90, FI	2
25	39312	Nut, hex, std, M10 X 1.5	2
26	81539	Arm wldt, lift, mop, Lh	1
27	81538	Arm wldt, lift, mop, Rh	1
28	41430	Nut, hex, lock, M10 X 1.5, NI	4
29	32492	Washer, flt, 0.38 std	4
30	15047	Spring, extn, 0.62od X 0.08wir, 3.0l	2
31	39019	Pin, clevis, 0.37D X 0.75l	4
32	363976	Screw, hex, M08 X 1.25 X 60, FI	2
33	39311	Nut, hex, std, M08 X 1.25	2
34	81537	Frame wldt, mop, V	2
35	83332	Spacer, spring	2
36	80317	Spring, tors, 2.36id, 0.18wir 07.5coil	1
37	80318	Spring, tors, 2.36id, 0.18wir 07.5coil	1
38	384265	Label, [Quick Mop]	1
39	83347	Mop, dust	2
40	83348	Mop, dust, industrial	1

## QUICK MOP™

The *QuickMop*™ is a front end sweeping attachment that sweeps a clean path on the floor, as the machine scrubs the floor.

1. Drive the machine close to *QuickMop*™ attachment.
2. Set the machine parking brake and turn the machine power off.

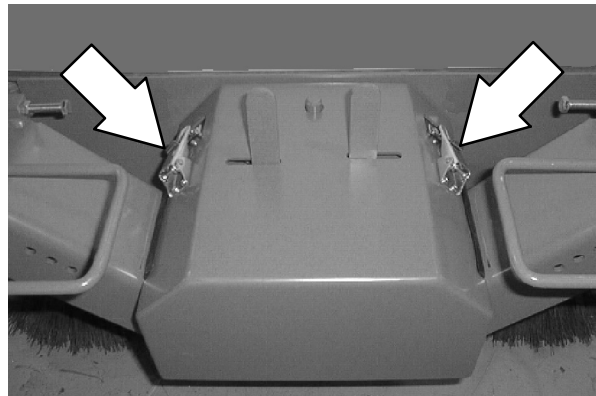
**FOR SAFETY: Before leaving or servicing machine, stop on level surface, set parking brake, turn off machine, and remove key.**



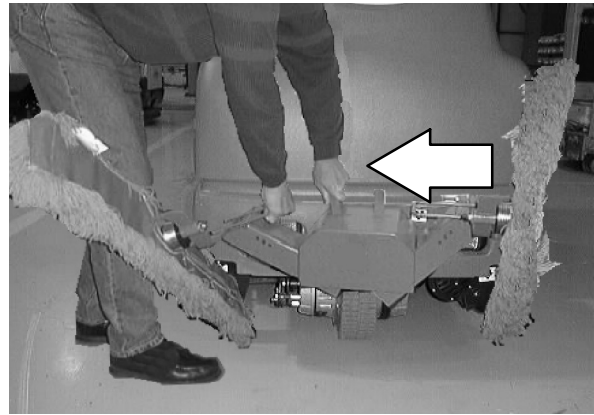
3. Connect the *QuickMop*™ attachment to the mounting bracket on the front of the machine.



4. Fasten the latches on the front of the mounting bracket. Release the parking brake and drive to the designated area to be swept.



5. Pull the release lever to raise or lower each side of the *QuickMop*™.



6. Turn the vacuum and brushes on, lower brushes and begin scrubbing.



7. Remove and refasten the *QuickMop*™ head covers with the easy to remove snaps. Remove the head covers to rotate, shake and clean at regular intervals.

