



# INSTRUCTION BULLETIN

No. 340412  
Machine: 7100  
Published: 12-2008  
Rev: 02

**NOTE: DO NOT DISCARD the Parts List from the Instruction Bulletin. Place the Parts List in the appropriate place in the machine manual for future reference. Retaining the Parts List will make it easier to reorder individual parts and will save the cost of ordering an entire kit.**

*NOTE: Numbers in parenthesis ( ) are reference numbers for parts listed in Bill of Materials.*

Installation instructions for **kit number 391055**

## SYNOPSIS:

This kit contains the parts needed to install a dual vacuum fan system on the 7100 scrubber.  
Please follow step-by-step instructions.

## SPECIAL TOOLS / CONSIDERATIONS: NONE

(Estimated time to complete: 2 hours)

## PREPARATION:

1. Park the machine on a clean level surface, turn off the machine, remove the key, and set the parking brake.

**FOR SAFETY: Before leaving or servicing machine, stop on level surface, turn off machine, and remove key.**

2. Secure the operator seat open.
3. Disconnect the battery cables from the batteries.



**WARNING: Always disconnect battery cables from machine before working on electrical components.**

## INSTALLATION:

1. Open the tank cover. Refer to Fig. 1.
2. Disconnect the tank cover support cable from the vacuum fan bracket. Set the mounting hardware aside. Allow the tank cover to lay back against the tank. Refer to Fig. 1.
3. Remove the two mounting bolts securing the vacuum fan assembly in the machine. Set the bolts aside. Refer to Fig. 1.
4. Lift the vacuum fan assembly to access the wire harness and vacuum hose connections.

5. Loosen the vacuum hose clamp and remove the vacuum fan hose. Refer to Fig. 1.
6. Disconnect the fan harness from the main wire harness. Remove the single vacuum fan assembly from the machine. Refer to Fig. 1 and Fig. 6.
7. Place the single vacuum fan assembly on a clean work bench or table. Note the orientation of vacuum fan, mounting brackets, and sleeves before disassembling.
8. Disassemble the single vacuum fan assembly. Remove the vacuum fan motor from the mounting brackets. Set the vacuum fan motor, sleeves and all mounting hardware aside. Discard the single vacuum fan mounting brackets. Refer to Fig. 1.

*NOTE: Note orientation of motors and brackets in Fig. 2. Install the set aside motor first, in the new mounting bracket oval, with the rear mounting hardware first. Refer to Fig. 2, Fig. 3, and Fig. 4.*

9. Mount the set aside vacuum fan motor in the cut-away oval of the new lower mounting bracket (2). Use the set aside short M06 hex screw, a long sleeve, washer and lock nut in the rear mounting location first. Refer to Fig. 2 and Fig. 4.
10. Mount the back side of the new vacuum fan motor (11) to the new lower mounting bracket (2) with a short M06 hex screw, long sleeve (3), washer (6) and lock nut (7). Refer to Fig. 2 and Fig. 4.

*NOTE: Note orientation of long and short sleeves, above and below the motors before assembling motors to upper bracket. Refer to Fig. 2, Fig. 3, and Fig. 4.*

11. Assemble the new upper fan bracket (1) to the top of the assembly, using set aside and new, three long M06 hex screws, long sleeves, short sleeves, washers and lock nuts. Refer to Fig. 2, Fig. 3, and Fig. 4.
12. Mount the vacuum fan motor (11) to the upper fan bracket using a short M06 hex screw, short sleeve, washer and lock nut. Refer to Fig. 2.
13. Move the newly assembled vacuum fan motor assembly back over to the rear of the machine. Reconnect the vacuum hose to the front vacuum fan motor. Refer to Fig. 2.
14. Connect each vacuum fan cable to the main harness. Refer to Fig. 6.
15. Mount the new vacuum fan motor assembly in the rear of the machine with M08 hex screws and washers. Tighten all mounting hardware. Refer to Fig. 2 and Fig. 5.
16. Use a 2" hole saw to cut a hole into the tank cover. Refer to Fig. 7.
17. Close the tank cover partially, and reconnect the hopper cover support cable to the new dual fan bracket with the set aside hardware. Close and latch the tank cover. Refer to Fig. 1.
18. Locate the circuit breaker panel in the front of the operator compartment.
19. Disconnect and remove the 20-amp. circuit breaker from slot 6 in the panel. Refer to Fig. 1.
20. Insert the 40-amp. circuit breaker (10) into slot 6 in the panel. Connect the new circuit breaker to the wiring harness. Refer to Fig. 2.
21. Reconnect the battery cables to the batteries.
22. Lower the operator seat.
23. Turn on the machine and check the vacuum fan motors for proper operation.

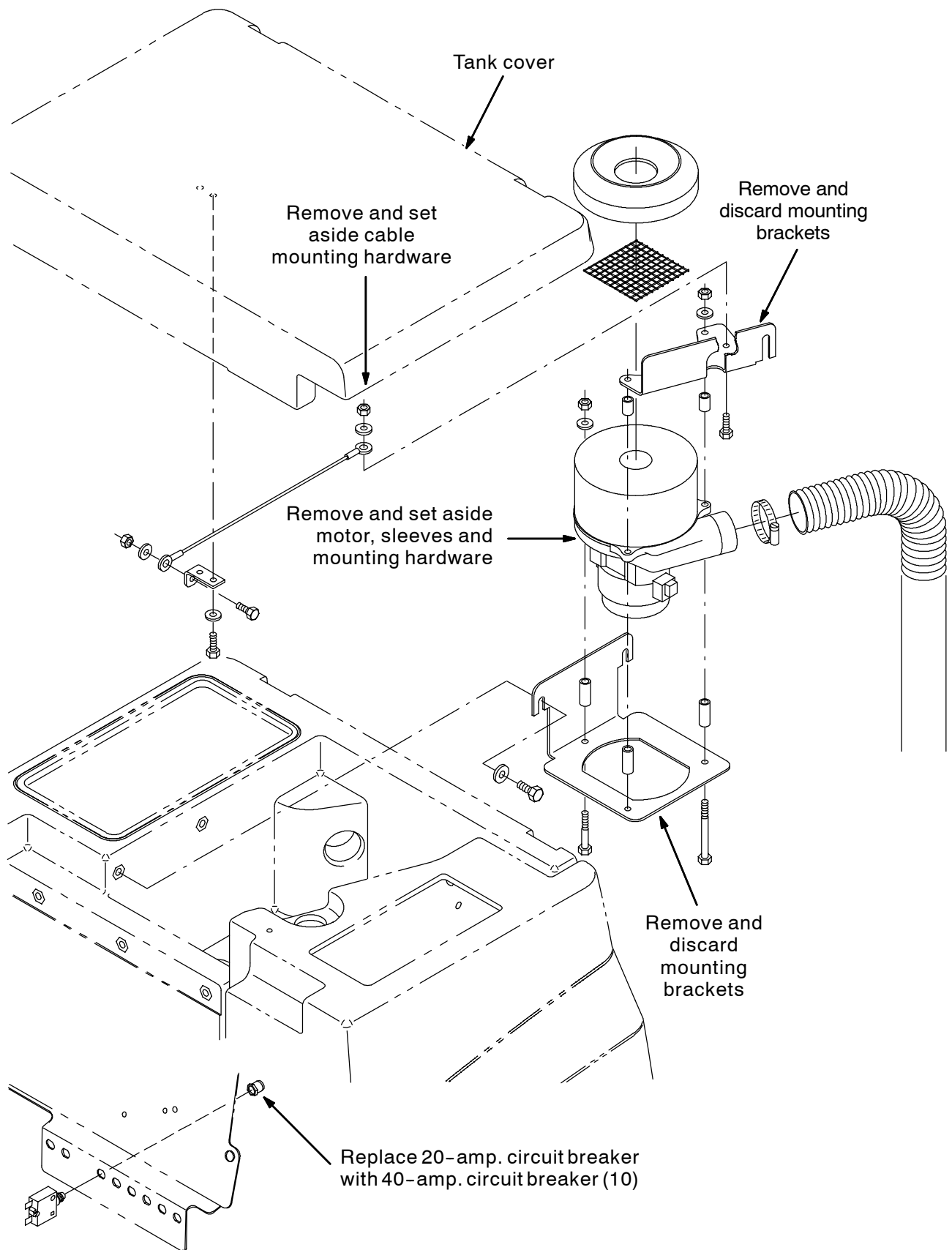


FIG. 1

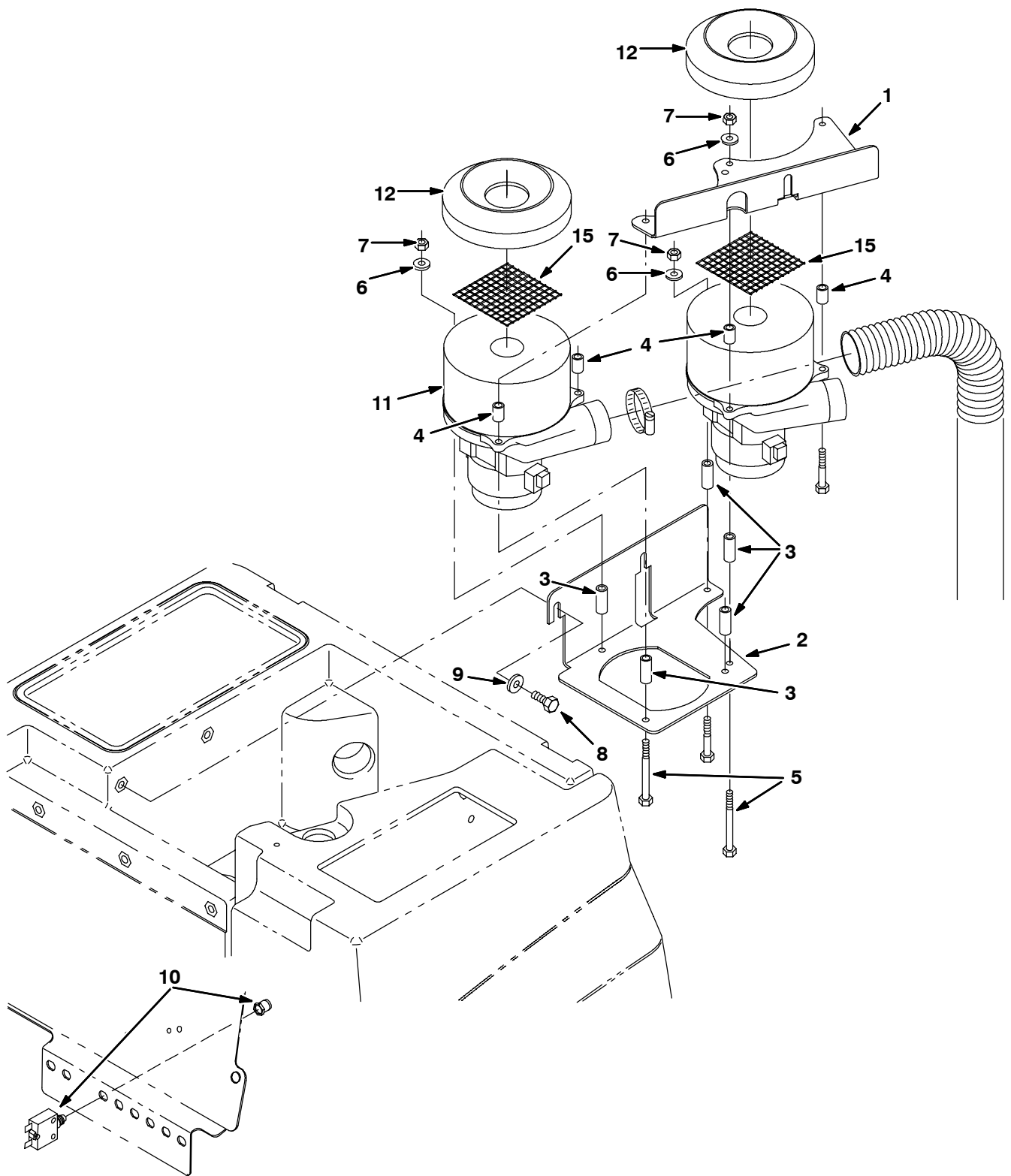
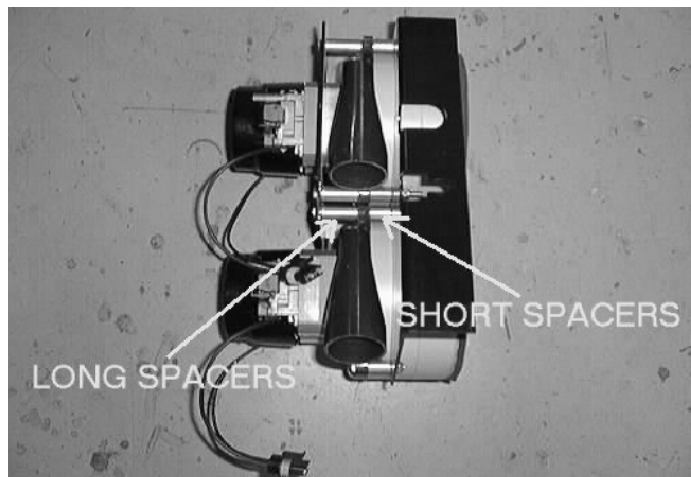


FIG. 2



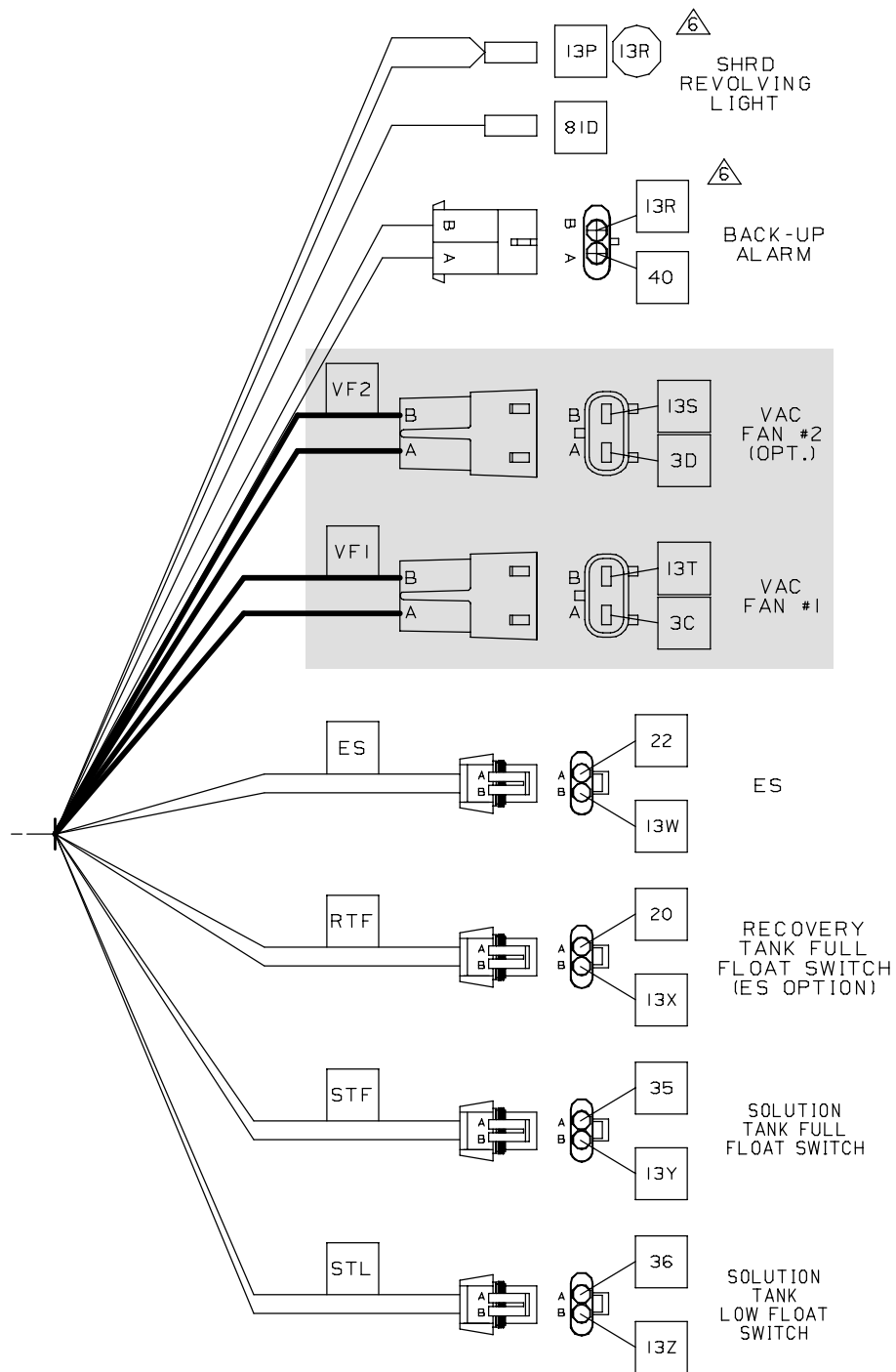
**FIG. 3 - Dual Vacuum Fan Assembly (Top And Bottom View)**



**FIG. 4 -Dual Vacuum Fan Assembly (Side View)**



**FIG. 5 -Dual Vacuum Fan Assembly Installation**



**FIG. 6 - Dual Vacuum Fan Wire Harness Connections**

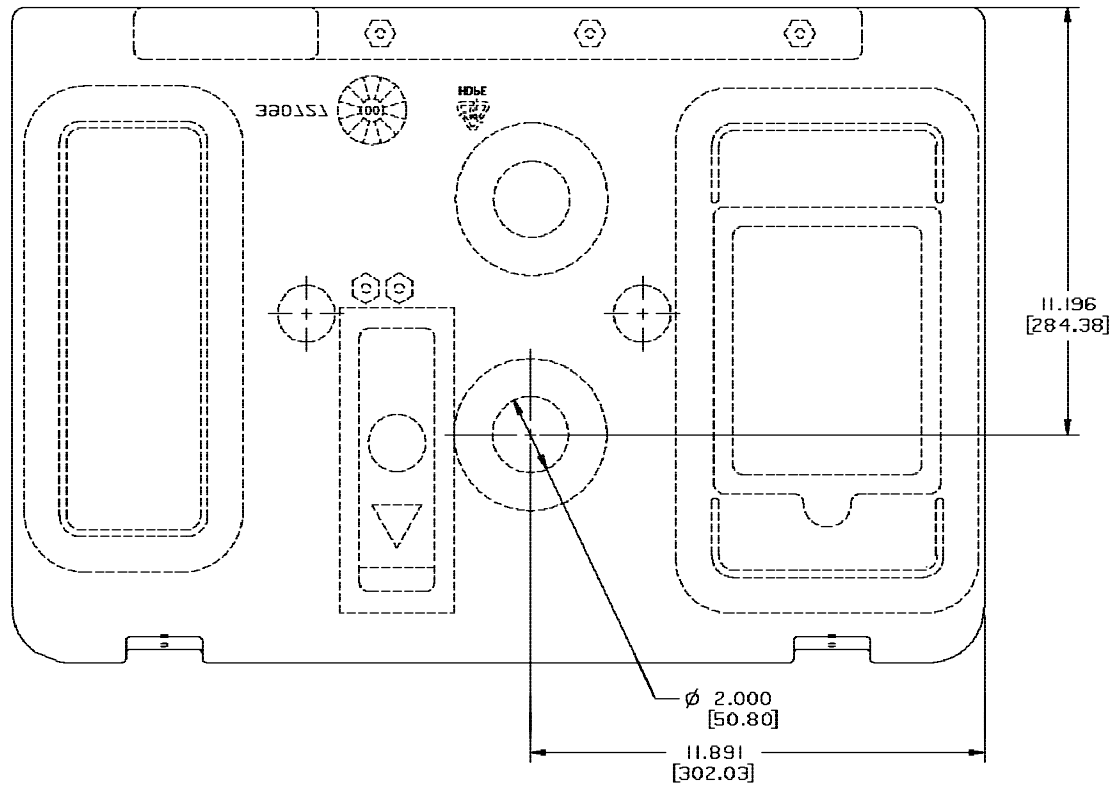


FIG. 7

**BILL OF MATERIALS FOR DUAL VAC FAN KIT 391055**

Ref.	TENNANT Part No.	Description	Qty.
1	391141	Bracket, fan	1
2	391140	Bracket, fan	1
3	222497	Sleeve	5
4	360930	Sleeve	4
5	58979	Screw, hex, M06 X 1.0 X 55, Ss	2
6	01684	Washer, flt, .25 Ss	5
7	08712	Nut, hex, lock, M06 X 1.0, NI, Ss	5
8	09740	Screw, hex, M08 X 1.25 X 20, Ss	3
9	01685	Washer, flt, .31 Ss	3
10	383727	Circuit breaker, 40.0a	1
11	130413	Motor, ele, vacuum, 36vdc, 5.7D, 3-stage	1
12	391343	Seal, fan	1
13	10925	Connector, 2-conductor	1
14	10926	Terminal, [metripk 630], fem 14	1
15	391350	Screen, fan inlet	1

TENNANT COMPANY  
P. O. Box 1452  
Minneapolis, MN 55440-1452