



# INSTRUCTION BULLETIN

No. 340387  
Machine: 7300/8300  
Published: 12-2009  
Rev: 02

**NOTE: DO NOT DISCARD the Parts List from the Instruction Bulletin. Place the Parts List in the appropriate place in the machine manual for future reference. Retaining the Parts List will make it easier to reorder individual parts and will save the cost of ordering an entire kit.**

*NOTE: Numbers in parenthesis ( ) are reference numbers for parts listed in Bill of Materials.*

Installation instructions for **kit numbers 387483 / 9006959**

## SYNOPSIS:

This kit contains the parts needed to install a positive solution control drain on 7300 or 8300 machines. Please follow step-by-step instructions.

## SPECIAL TOOLS / CONSIDERATIONS: NONE

(Estimated time to complete: 1 hour)

## PREPARATION:

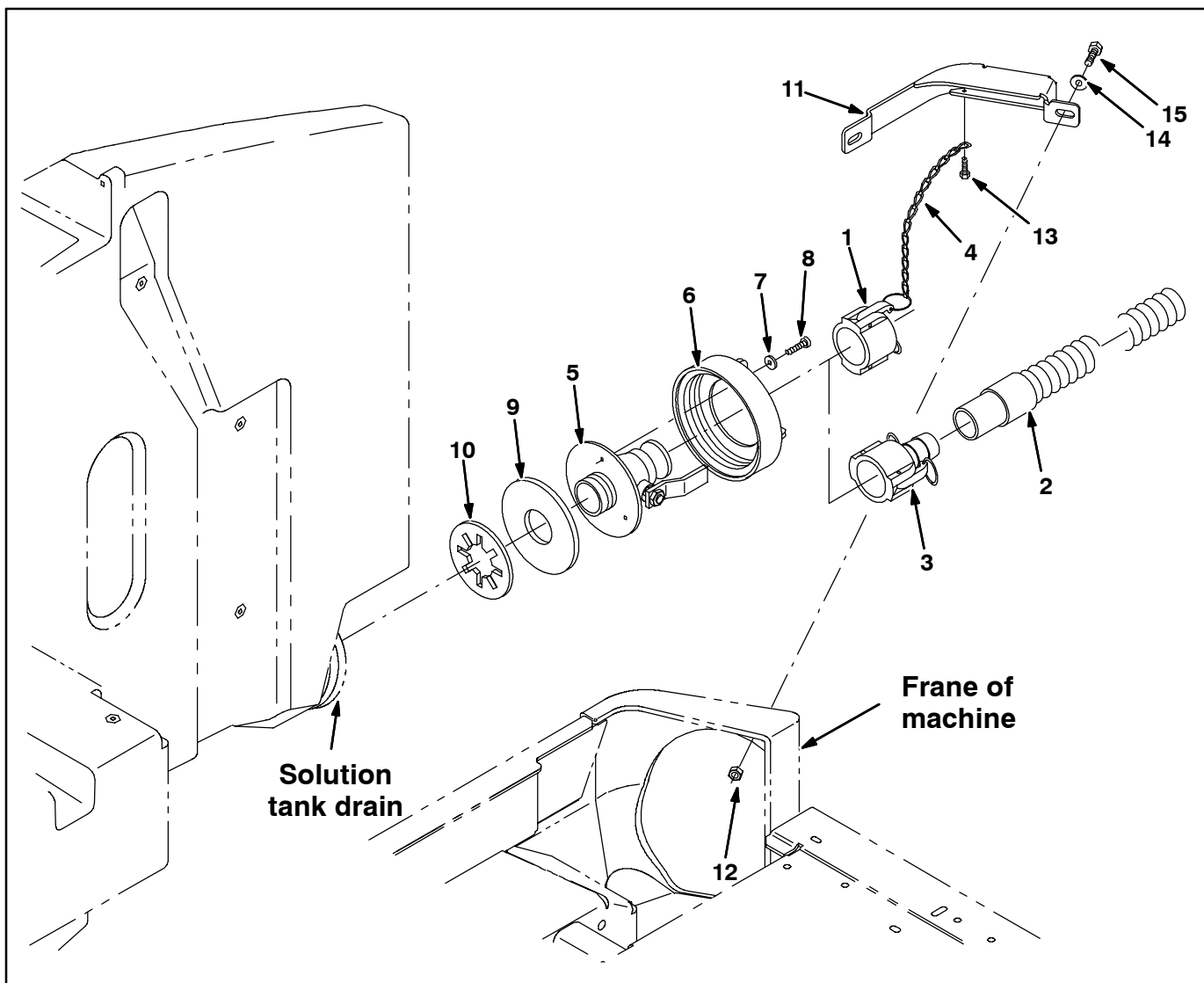
1. Park the machine on a clean level surface, turn off the machine, set the parking brake, and remove the key.

**FOR SAFETY: Before leaving or servicing machine, stop on level surface, turn off machine, set parking brake, and remove key.**

2. Empty the solution tank and the recovery tank. Both tanks must be empty before installing the new drain kit.

## INSTALLATION:

1. Remove the tank drain cap assembly from the recovery or solution tank that the positive solution drain kit will be mounted to.
2. Mount the ball valve assembly (5, 9, and 10) to the threaded tank cap (6) with three screws (8) and washers (7). Refer to Fig. 1.
3. Screw the new control valve assembly onto the tank with the new threaded tank cap (6). Refer to Fig. 1.
4. Mount the new side bumper (11) above the ball valve assembly with two hex screws (15) and washers (14). Refer to Fig. 1.
5. Mount one end of the sash chain (4) to the new side bumper (11) with a hex screw (13). Refer to Fig. 1.
6. Clip the other end of the sash chain (4) to the dust cap (1). Clamp the dust cap (1) over the valve when the valve is not in use. Refer to Fig. 1.
7. Remove the dust cap (1), and attach the drain hose (2) to the valve (5) with the coupler (3) to drain the tank. Refer to Fig. 1.



**FIG. 1 - Positive Solution Control Drain Kit, Solution Tank**

---

**BILL OF MATERIALS FOR POSITIVE SOLUTION DRAIN KIT 387483, SOLUTION TANK**

| <b>Ref.</b> | <b>TENNANT<br/>Part No.</b> | <b>Description</b>                     | <b>Qty.</b> |
|-------------|-----------------------------|--|-------------|
| 1           | 48733                       | Cap, Dust, Cplg, Water, 2.16ID         | 1           |
| 2           | 75635                       | Hose Assy, W/1Cuff, 1.5D 120L 1.5      | 1           |
| 3           | 48734                       | Fitting, Coupler, Hose, Shank, Fem     | 1           |
| 4           | 19903                       | Chain, Sash, 35, 07.2L 13 Link         | 1           |
| 5           | 1049269                     | Valve, Ball, Drain, 1.50 SS Rwk 374577 | 1           |
| 6           | 23456                       | Cap, Tank, Drain, 6.17 Thread Pye      | 1           |
| 7           | 01684                       | Washer, Flat, .25 SS                   | 3           |
| 8           | 09744                       | Screw, Pan, M6 X 1.0 X 12, SS          | 3           |
| 9           | 1031700                     | Gasket, Lid, Posi Drain                | 1           |
| 10          | 20932                       | Washer, Pye 1.91B, 4.38D, 0.13         | 1           |
| 11          | 387126                      | Bumper, Posi Drain, Soltn Side         | 1           |
| 12          | 07792                       | Nut, Hex, Flng, M10 X 1.5              | 2           |
| 13          | 74455                       | Screw, Hex, M06 X 1.0 X 12, fmg        | 1           |
| 14          | 32492                       | Washer, Flat, .38 Std                  | 2           |
| 15          | 39284                       | Screw, Hex, M10 X 1.5 X 35, 8.8        | 2           |

**BILL OF MATERIALS FOR DRAIN KIT, GRAY, CI [POSI CNTRL/SOLTN] - 9006959**

| <b>Ref.</b> | <b>TENNANT<br/>Part No.</b> | <b>Description</b>                     | <b>Qty.</b> |
|-------------|-----------------------------|--|-------------|
| 1           | 48733                       | Cap, Dust, Cplg, Water, 2.16ID         | 1           |
| 2           | 75635                       | Hose Assy, W/1Cuff, 1.5D 120L 1.5      | 1           |
| 3           | 48734                       | Fitting, Coupler, Hose, Shank, Fem     | 1           |
| 4           | 19903                       | Chain, Sash, 35, 07.2L 13 Link         | 1           |
| 5           | 1049269                     | Valve, Ball, Drain, 1.50 SS Rwk 374577 | 1           |
| 6           | 23456                       | Cap, Tank, Drain, 6.17 Thread Pye      | 1           |
| 7           | 01684                       | Washer, Flat, .25 SS                   | 3           |
| 8           | 09744                       | Screw, Pan, M6 X 1.0 X 12, SS          | 3           |
| 9           | 1031700                     | Gasket, Lid, Posi Drain                | 1           |
| 10          | 20932                       | Washer, Pye 1.91B, 4.38D, 0.13         | 1           |
| 11          | 1056796                     | Bumper, Side, Soltn, Gray [Posi Drain] | 1           |
| 12          | 07792                       | Nut, Hex, Flng, M10 X 1.5              | 2           |
| 13          | 74455                       | Screw, Hex, M06 X 1.0 X 12, fmg        | 1           |
| 14          | 32492                       | Washer, Flat, .38 Std                  | 2           |
| 15          | 39284                       | Screw, Hex, M10 X 1.5 X 35, 8.8        | 2           |

TENNANT COMPANY  
P. O. Box 1452  
Minneapolis, MN 55440-1452