



# INSTRUCTION BULLETIN

No. 340378  
Machine: 7300/8300  
Published: 12-00/01  
System: OPTIONS

**NOTE: DO NOT DISCARD the Parts List from the Instruction Bulletin. Place the Parts List in the appropriate place in your machine manual for future reference. Retaining the Parts List will make it easier to reorder individual parts and will save you the cost of ordering an entire kit.**

*NOTE: Numbers in parenthesis ( ) are reference numbers for parts listed in Bill of Materials.*

Installation instructions for kit number 387043

## **SYNOPSIS / PROBLEM:**

This kit contains the parts needed to install a rollout battery kit on the model 7300 scrubber and 8300 sweeper/scrubber.

Please follow step-by-step instructions.

## **SPECIAL TOOLS / CONSIDERATIONS: LIFT OR CHAIN HOIST**

(Estimated time to complete: 1 hour)

## **PREPARATION:**

(Refer to FIG. 1)

**FOR SAFETY: Before leaving or servicing machine, stop on level surface and set parking brake. Then turn off machine and remove key.**

1. Open the top battery compartment cover, and secure in position with the cover support rod.
2. Open the rear battery compartment door.
3. Disconnect battery pack from the machine.



**WARNING: Always disconnect battery cables from machine before working on electrical components.**

## **INSTALLATION:**

(Refer to FIG. 1)

1. Remove battery pack from battery compartment with chain hoist or lift.

**NOTE: When servicing machine, use hoist or lift that will support the weight of the battery pack.**

2. Mount the safety cable (1) to the solution tank, on the inside of the battery compartment, with an existing bolt. Discard the old washer from the bolt, before mounting the safety cable (1). (Refer to FIG. 1)
3. Lay the two rollout battery track assemblies in mounting position on the floor of the battery compartment. (Refer to FIG. 1)

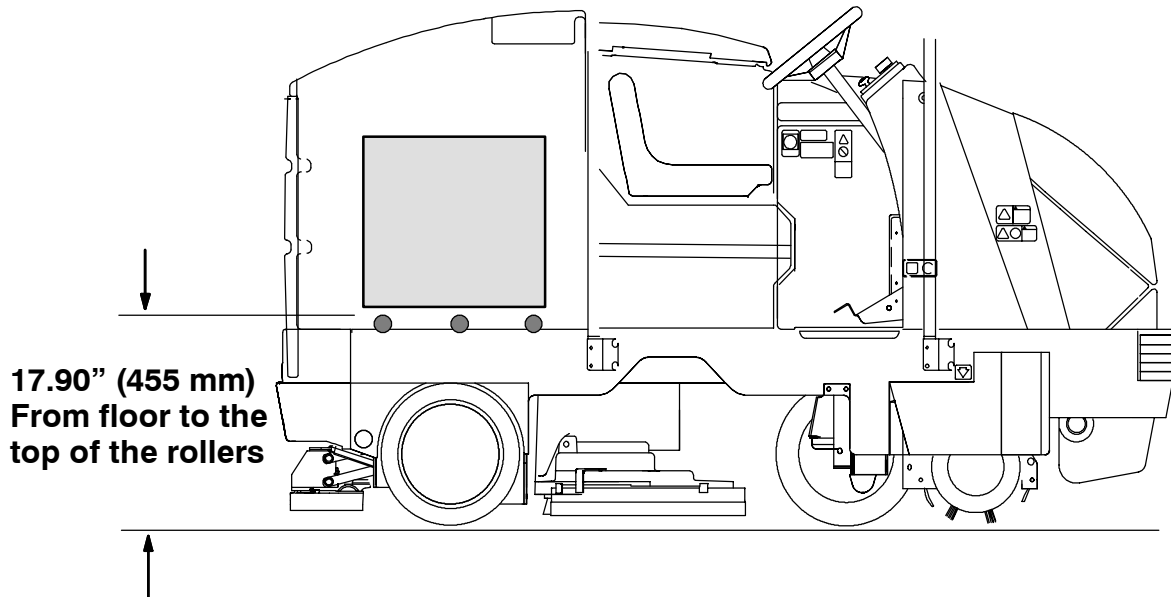
*NOTE: The rollout battery track assemblies (B.O.M. parts 2 thru 6) are pre-assembled.*

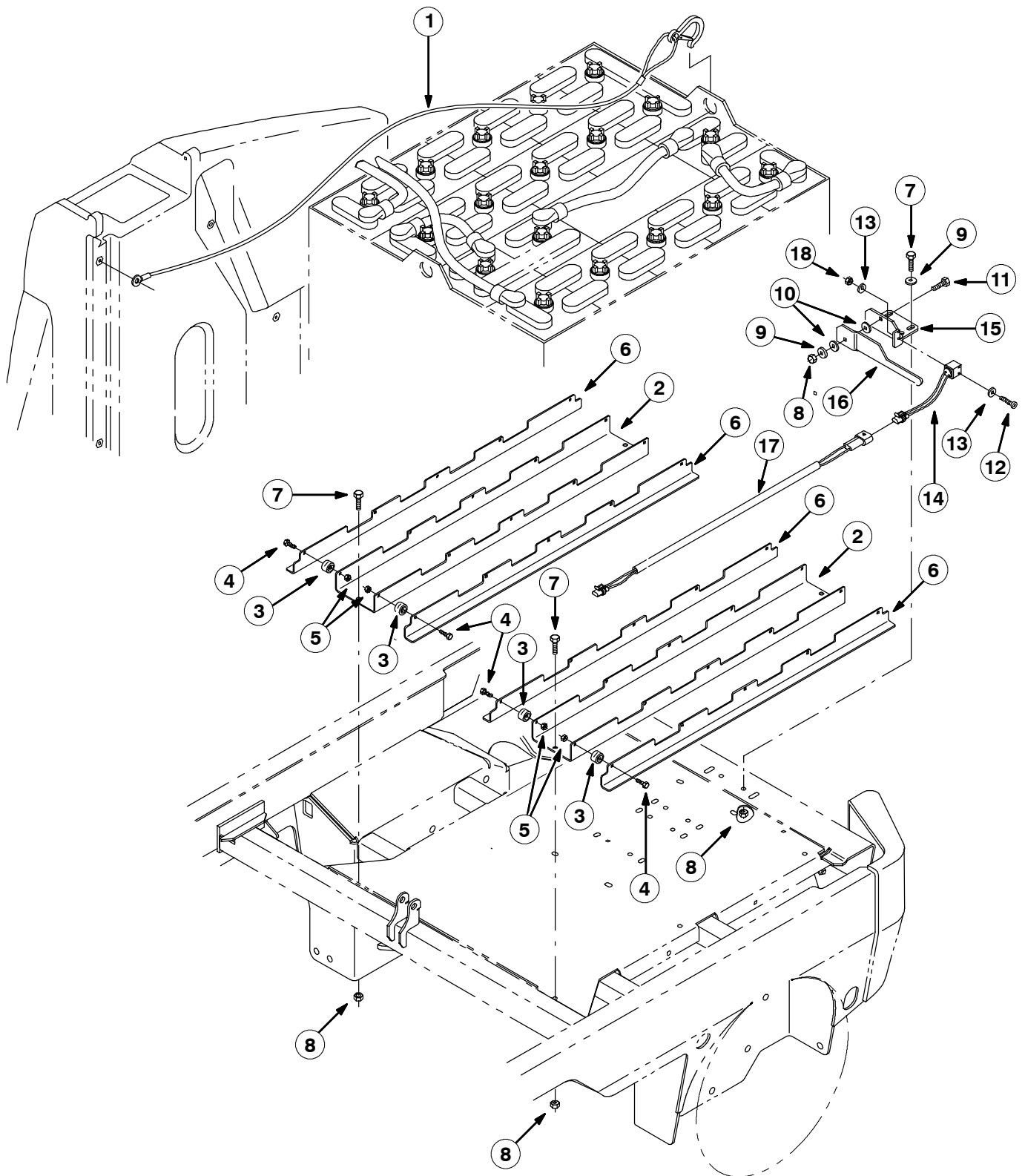
4. Mount each track assembly to the floor of the battery compartment with hex screws (7) and lock nuts (8). (Refer to FIG. 1)
5. Connect the rollout battery harness (17) to the main harness. (Refer to FIG. 1)
6. Lay the harness between the rollout battery track assemblies. (Refer to FIG. 1)
7. Connect the NO switch (14) to the rollout battery harness (17). (Refer to FIG. 1)
8. Mount the battery stop bracket assembly to the rear of the battery compartment with hex screws (7), washers (9), and lock nuts (8). (Refer to FIG. 1)
9. Mount the end of the NO switch (14) to the battery stop bracket assembly with the pan screw (12), two washers (13), and hex nut (18). (Refer to FIG. 1)
10. Carefully roll the battery pack back into the battery compartment. Close the battery stop bracket to secure the battery pack in place.

*NOTE: The battery stop bracket will not allow the machine to operate unless the bracket is in the closed position.*

11. Clip the unattached end of the battery safety cable to the battery pack. (Refer to FIG. 1)
12. Reconnect the battery cable connection to the machine connection.
13. Close the rear battery compartment door and top battery compartment cover.

*NOTE: The distance from the the floor to the top of the rollers in the battery compartment is 17.90" (455 mm).*





**FIG. 1 - BATTERY ROLLOUT KIT INSTALLATION**

**BILL OF MATERIALS FOR BATTERY ROLLOUT KIT 387043**

<b>Ref.</b>	<b>TENNANT Part No.</b>	<b>Description</b>	<b>Qty.</b>
1	386968	Cable, safety, battery	1
2	386953	Channel, battery, R/O	2
3	369415	Bearing, needle, 0.25B, 0.88D, 0.50W	20
4	07805	Screw, hex, M06-1.0 X 35, SS	20
5	08712	Nut, hex, lock, M06-1.0, NL, SS	20
6	386952	Angle, battery, R/O	4
7	09740	Screw, hex, M08-1.25 X 20, SS	6
8	08713	Nut, hex, lock, M08-1.25, NL, SS	7
9	01685	Washer, flat, .31 SS	3
10	43454	Washer, plastic	2
11	09023	Screw, hex, M08-1.25 X 35, SS	1
12	09198	Screw, pan, M04-0.7 X 35, SS	2
13	41579	Washer, flat, #08 SS	4
14	387027	Switch, NO	1
15	386957	Bracket, battery, R/O	1
16	386954	Bar wldt, battery, R/O	1
17	386607	Harness, battery, R/O	1
18	07807	Nut, hex, std, M03-0.5, SS	2

TENNANT COMPANY  
P. O. Box 1452  
Minneapolis, MN 55440-1452