



INSTRUCTION BULLETIN

No. 340338
Machine: 6080/3640
Published: 9-99/00
System: ELECTRICAL

NOTE: DO NOT DISCARD the Parts List from the Instruction Bulletin. Place the Parts List in the appropriate place in your machine manual for future reference. Retaining the Parts List will make it easier to reorder individual parts and will save you the cost of ordering an entire kit.

NOTE: Numbers in parenthesis () are reference numbers for parts listed in Bill of Materials.

Installation instructions for kit number 379236

SYNOPSIS / PROBLEM:

This kit contains the parts needed to replace the battery cut out button on the model 6080/3640 scrubber.

Please follow step-by-step instructions.

SPECIAL TOOLS / CONSIDERATIONS: NONE

(Estimated time to complete: 0.5 hour)

PREPARATION:

(Refer to FIG. 1 and 2)

FOR SAFETY: Before leaving or servicing machine, stop on level surface and set parking brake. Then turn off machine and remove key.

1. Disconnect battery cables from machine.



WARNING: Always disconnect battery cables from machine before working on electrical components.

INSTALLATION:

(Refer to FIG. 1 and 2)

1. Lift the battery cover on the machine.
2. Disconnect, remove and discard the plug button from the machine. (Refer to FIG. 2)
3. Install the new switch and plug button in the machine. (Refer to FIG. 2)
4. Locate the 7/Purple and 8/Gray wires connected by the jumper lead. Remove and discard the jumper. (Refer to FIG. 1)
5. Connect the wires to the new installed switch. (Refer to FIG. 1)
6. Secure the wires to the harness with the wire ties.
7. Close battery cover.
8. Start the machine and check the battery cut out button for proper operation.

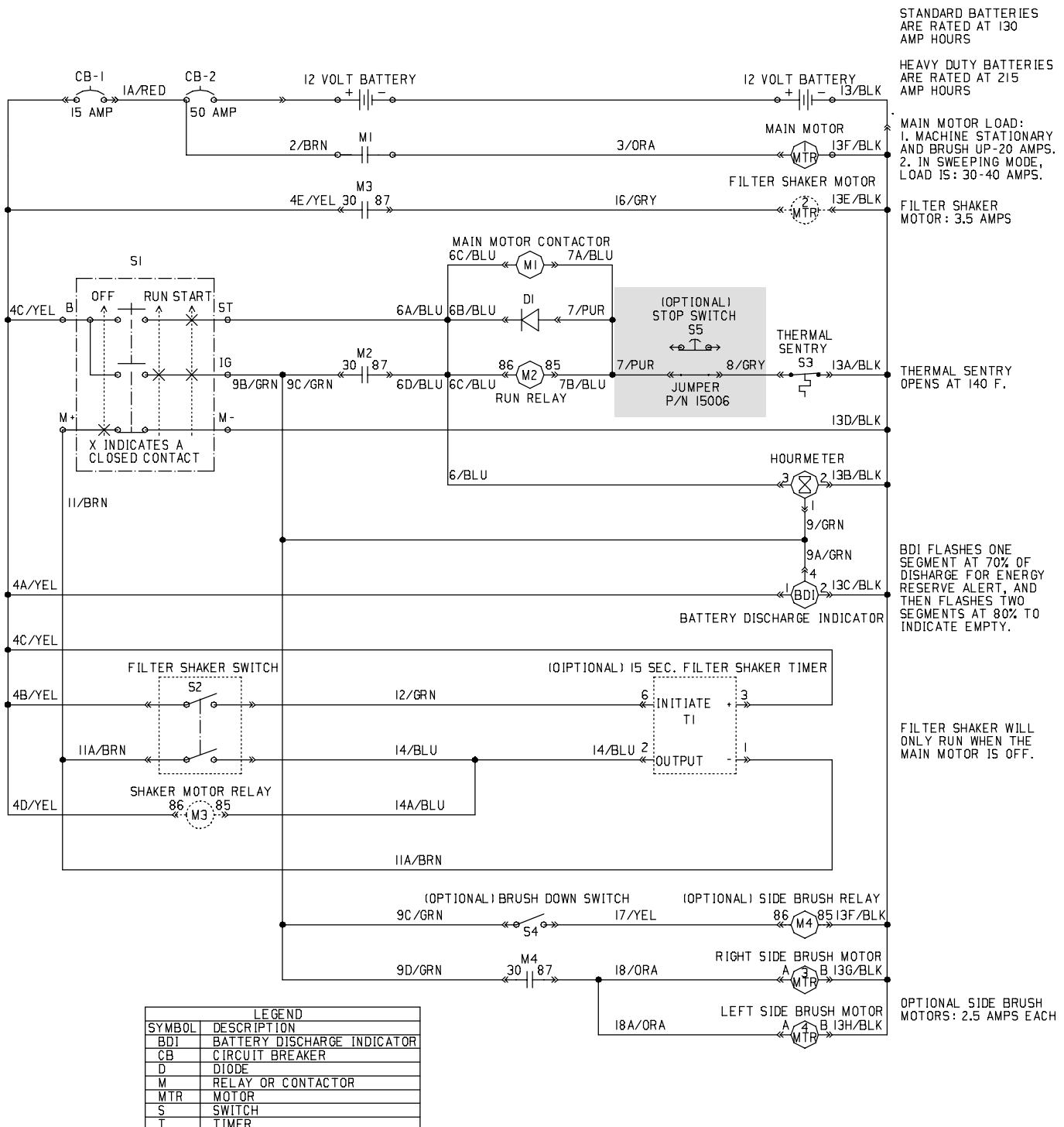


FIG. 1 - Electrical Schematic

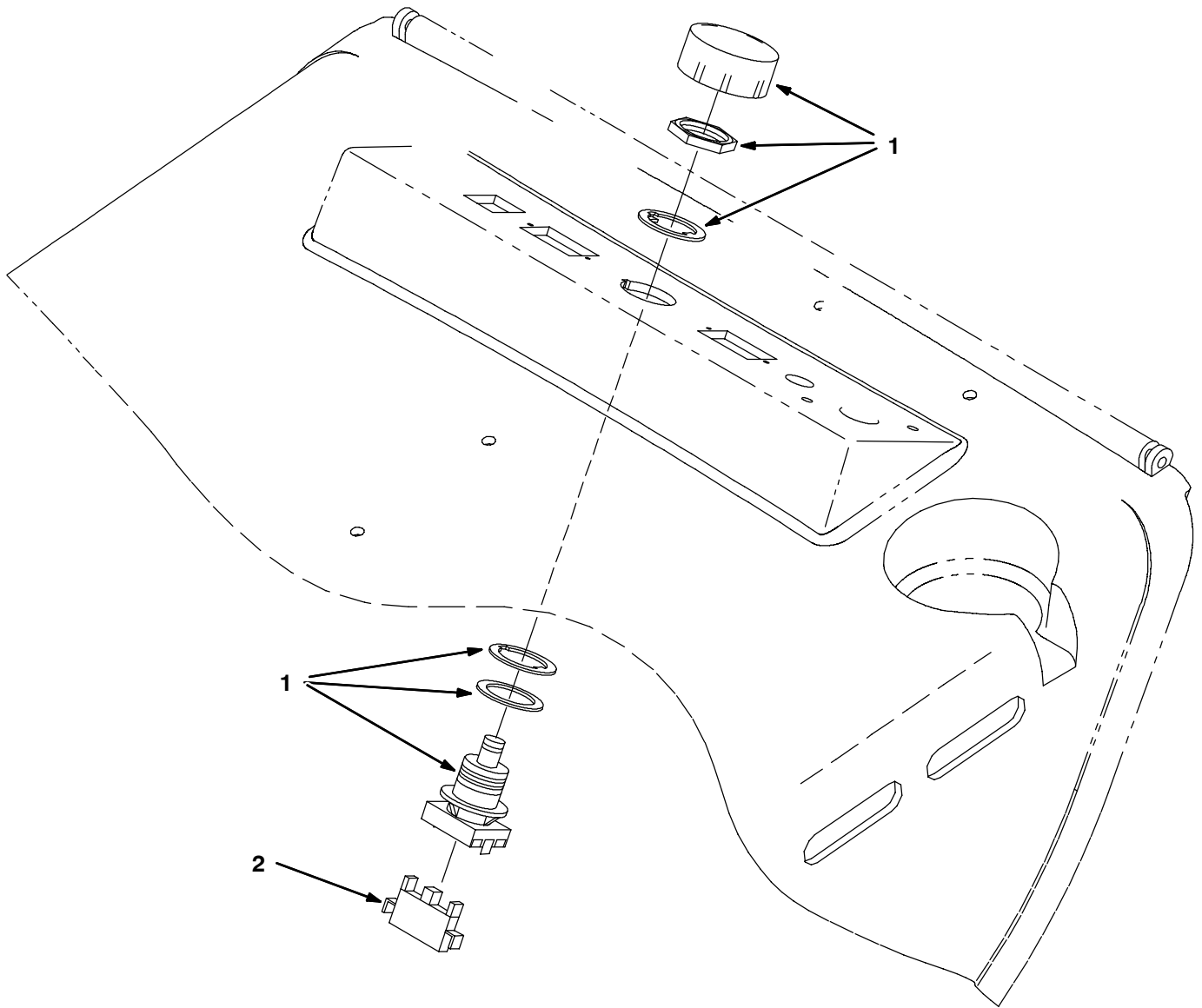


FIG. 2 - Battery Cut Out Button Installation

BILL OF MATERIALS FOR BATTERY CUT OUT BUTTON KIT 379236

Ref.	TENNANT Part No.	Description	Qty.
1	78553	Switch	1
2	65665	Contact, switch	1
3	49266	Tie, cable,	2

TENNANT COMPANY
P. O. Box 1452
Minneapolis, MN 55440-1452