



INSTRUCTION BULLETIN

No. 340330
Machine: Litter Hawk t
Published: 9-99/00
System: OPTIONS

NOTE: DO NOT DISCARD the Parts List from the Instruction Bulletin. Place the Parts List in the appropriate place in your machine manual for future reference. Retaining the Parts List will make it easier to reorder individual parts and will save you the cost of ordering an entire kit.

NOTE: Numbers in parenthesis () are reference numbers for parts listed in Bill of Materials.

Installation instructions for kit number 382681

SYNOPSIS / PROBLEM:

This kit contains the parts needed to install a battery retainer kit on the model Litter Hawk™ sweeper.

Please follow step-by-step instructions.

SPECIAL TOOLS / CONSIDERATIONS: Hand Drill, 19/64 (7.54 mm) Drill Bit

(Estimated time to complete: 1 hour)

PREPARATION:

(Refer to FIG. 1 thru 6)

FOR SAFETY: Before leaving or servicing machine, stop on level surface and set parking brake. Then turn off machine and remove key.

1. Raise engine cover.

INSTALLATION:

(Refer to FIG. 1 thru 6)

1. Remove the right hand side cover plate and mounting hardware. Set the cover plate and mounting hardware aside. (Refer to FIG. 1)
2. Remove and discard the battery clamp-down assembly holding the battery in place. (Refer to FIG. 2)
3. Disconnect the battery from the machine. (Refer to FIG. 2)
4. Remove and set aside the machine battery. (Refer to FIG. 2)
5. Locate the left front battery tray support angle (Refer to FIG. 3).
6. Mark and drill a 19/64 (7.54 mm) hole in the support angle according to the dimensions in figure 4. (Refer to FIG. 4)
7. Mark and drill a 19/64 (7.54 mm) hole in the set aside right hand cover plate according to the dimensions in figure 5. (Refer to FIG. 5)
8. Loosely mount the left hand angle (1) (90° piece) to the newly drilled hole in the support angle with one screw (2), washer (4) and hex nut (3). (Refer to FIG. 6)
9. Loosely mount the right hand angle (5) (84° piece) to the newly drilled hole in the right hand cover plate with one screw (2), washer (4) and hex nut (3). (Refer to FIG. 6)

10. Place the battery back in the support tray.
11. Adjust the left hand support angle (1) to firmly hold the left side of the battery in place without the clamp-down assembly. (Refer to FIG. 6)
12. Connect the battery to the machine.
13. Replace the set aside right hand cover with mounting hardware.
14. Adjust the right hand support angle so it holds the battery down securely. (Refer to FIG. 6)

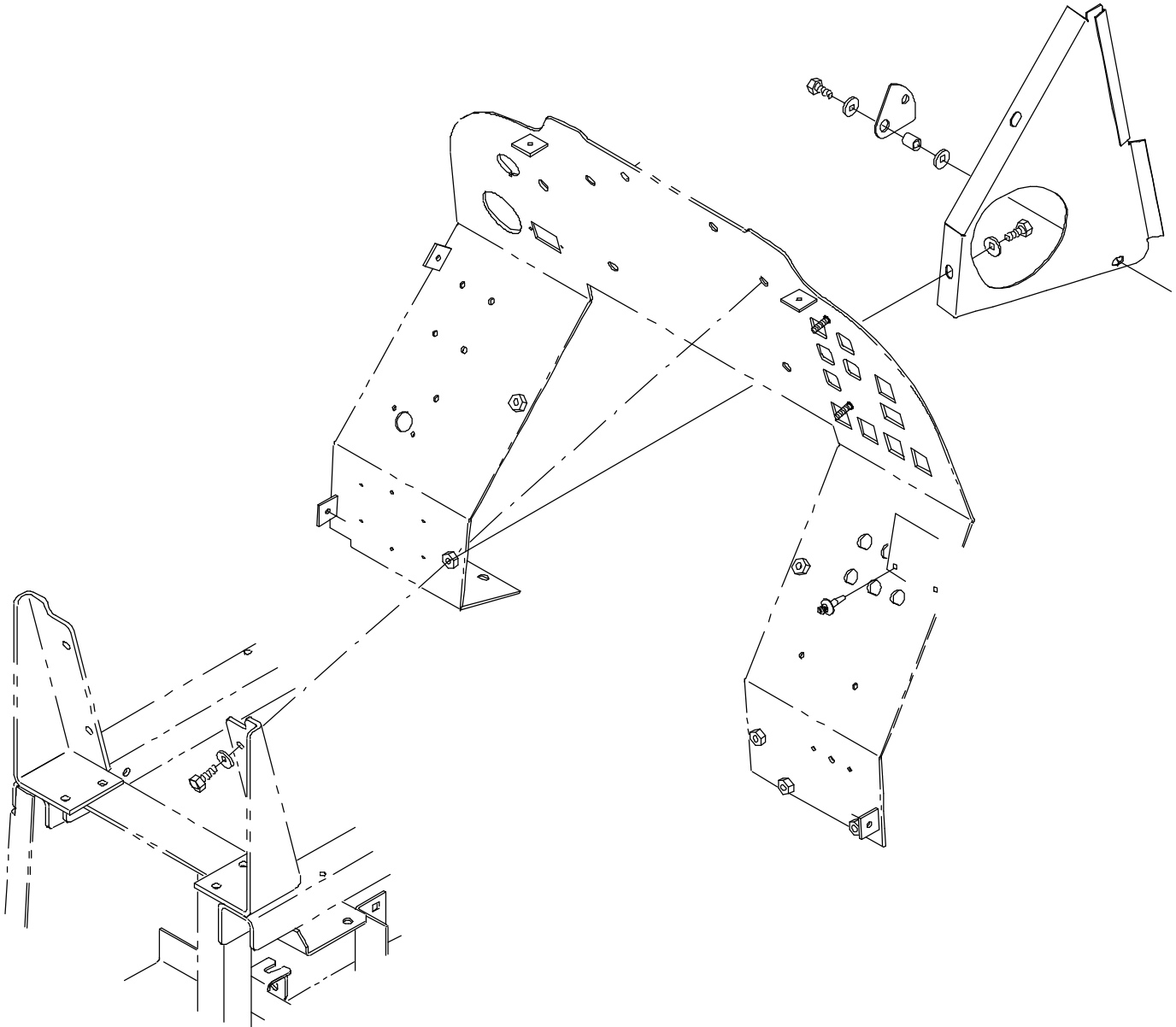


FIG. 1 - RIGHT HAND SIDE PANEL INSTALLATION

Disconnect battery cables and battery securing hardware.

Remove battery from the machine and set aside.

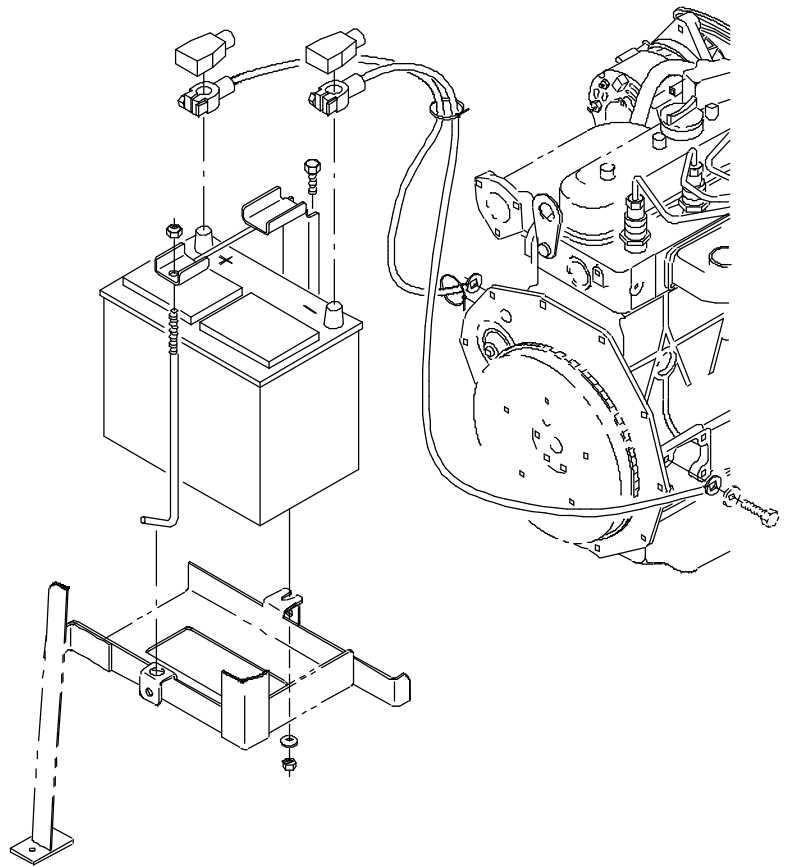


FIG. 2 - OLD BATTERY MOUNTING ASSEMBLY

**DRILL 19/64
(7.5)MM HOLE
IN ANGLE**

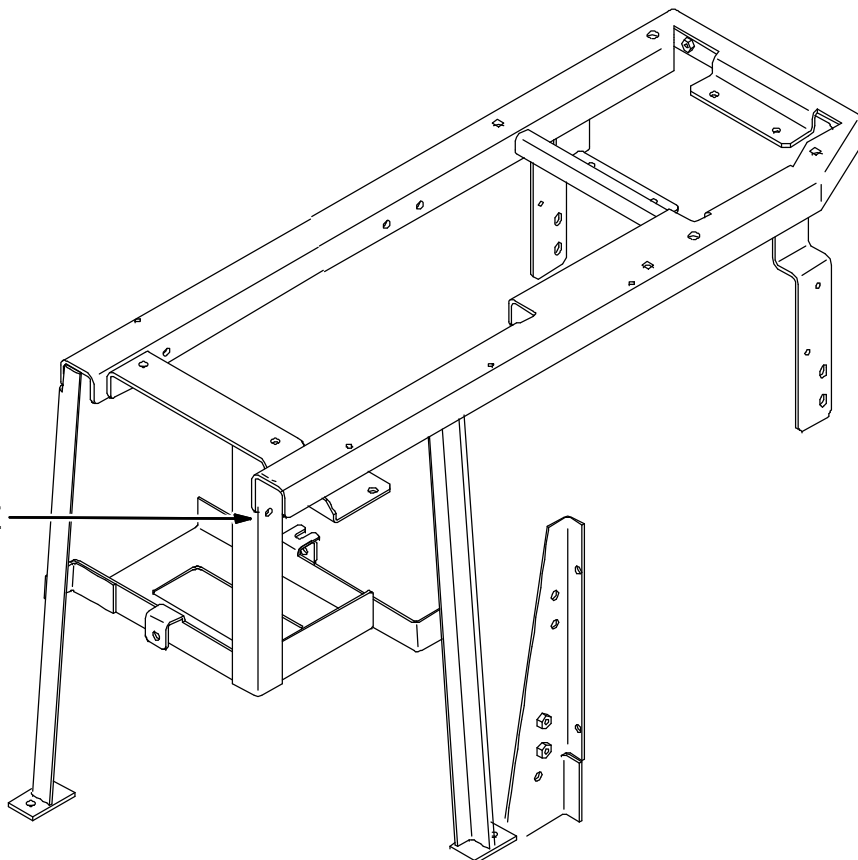


FIG. 3 - HOLE LOCATION FOR 382122

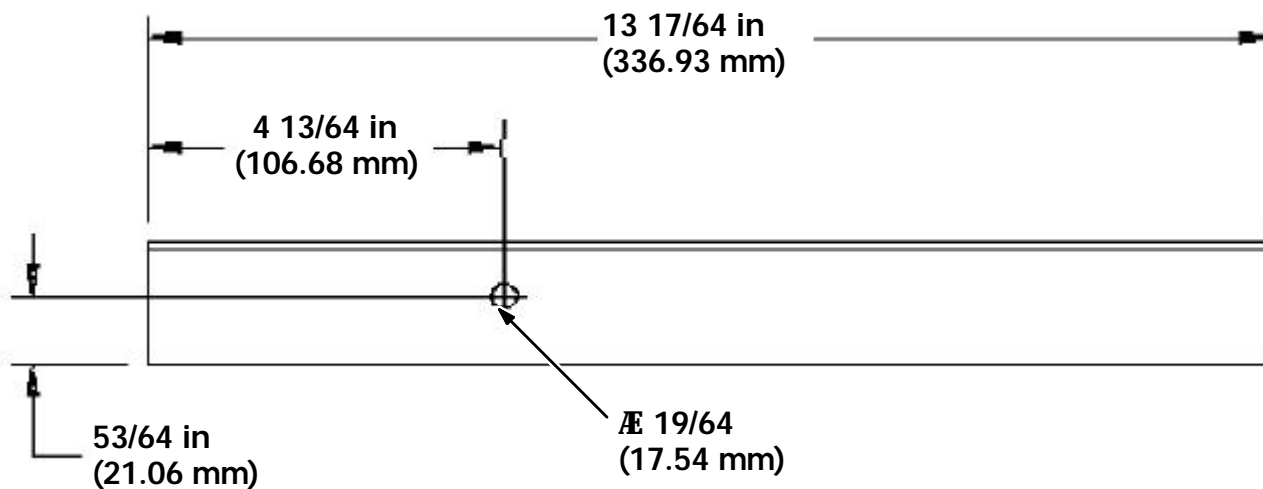


FIG. 4 - HOLE LOCATION FOR 382122

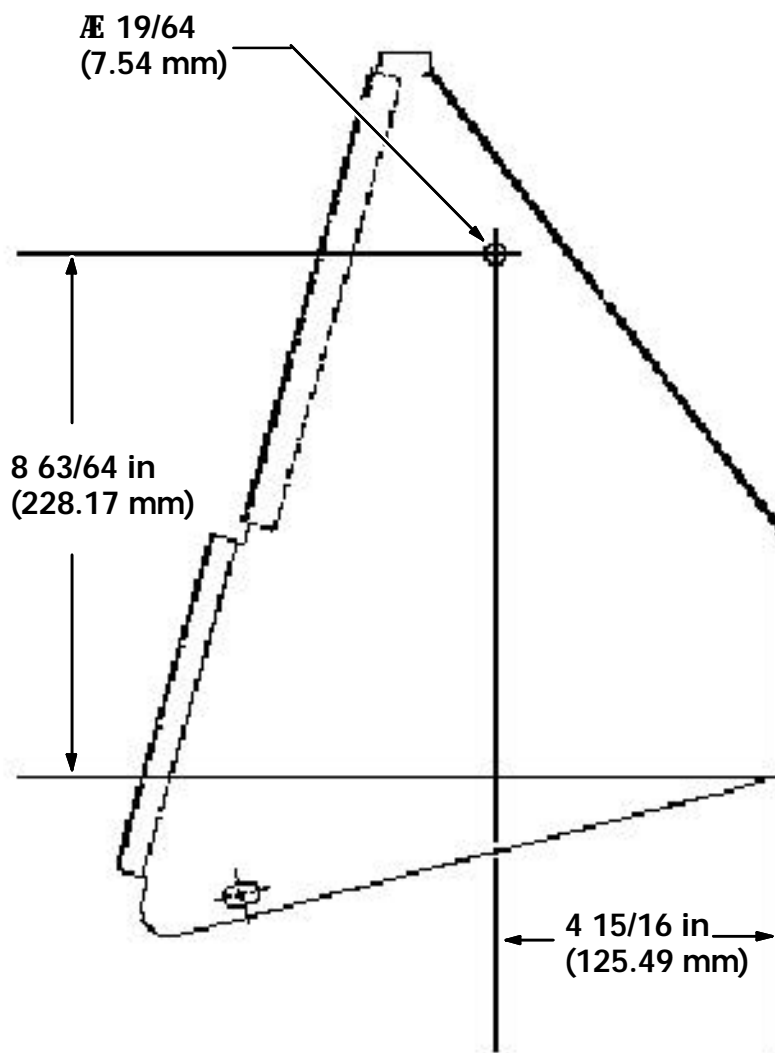
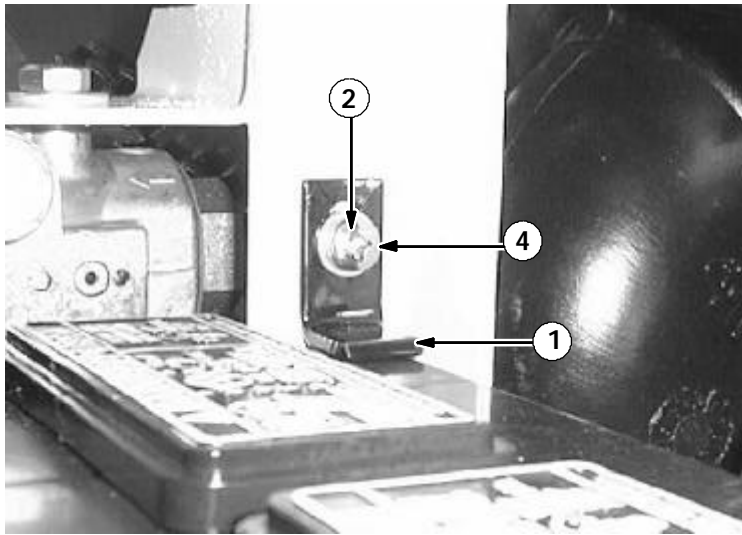
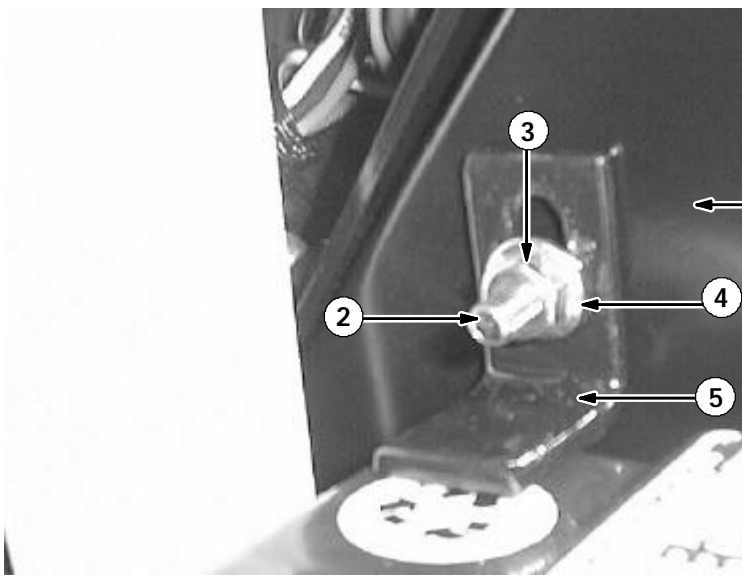


FIG. 5 - RIGHT SIDE COVER PANEL HOLE LOCATION



Mount the 90° left hand angle piece to the left front angle support of the battery tray



Mount the 84° right hand angle piece to the right side cover plate

Right side cover plate

FIG. 6 - FINISHED MOUNTED ANGLES

BILL OF MATERIALS FOR BATTERY RETAINER KIT 382681

Ref.	TENNANT Part No.	Description	Qty.
1	382662	Angle, battery, lh	1
2	06944	Screw, hex, M06-1.0 X 25	2
3	08708	Nut, hex, lock, M06-1.0	2
4	32483	Washer, flat, .25 SAE	2
5	382665	Angle, battery rh	1

TENNANT COMPANY
P. O. Box 1452
Minneapolis, MN 55440-1452