



INSTRUCTION BULLETIN

No. 340325
Machine: 6100
Published: 7-99/00
System: OPTIONS

NOTE: DO NOT DISCARD the Parts List from the Instruction Bulletin. Place the Parts List in the appropriate place in your machine manual for future reference. Retaining the Parts List will make it easier to reorder individual parts and will save you the cost of ordering an entire kit.

NOTE: Numbers in parenthesis () are reference numbers for parts listed in Bill of Materials.

Installation instructions for kit numbers 384428 and 384429

SYNOPSIS / PROBLEM:

This kit contains the parts needed to replace the speed control on the model 6100 sweeper with serial number 1072 and lower.

Please follow step-by-step instructions.

SPECIAL TOOLS / CONSIDERATIONS: NONE

(Estimated time to complete: 1 hour)

PREPARATION:

(Refer to FIG. 1)

FOR SAFETY: Before leaving or servicing machine, stop on level surface and set parking brake. Then turn off machine and remove key.

1. Disconnect battery cables from machine.



WARNING: Always disconnect battery cables from machine before working on electrical components.

INSTALLATION:

SPEED CONTROL KIT 384428

(Refer to FIG. 1)

1. Locate the directional pedal assembly on the front floor of the machine.
2. Remove and discard the 4 mounting screws holding the directional pedal assembly to the floor of the machine.
3. Unplug the directional pedal assembly from the main harness from the underside of the frame.
4. Discard the directional pedal assembly.
5. Connect the new directional pedal assembly to the main wire harness the same as the old pedal assembly.
6. Mount the new directional pedal assembly to the floor of the machine with the 4 new mounting screws (27).
7. Start the machine, and check the directional pedal for proper operation.

INSTALLATION:
SPEED CONTROL KIT 384429

(Refer to FIG. 2)

1. Locate the directional pedal/roller switch assembly on the front floor of the machine.
2. Remove and discard the 4 mounting screws holding the directional pedal and roller switch assembly to the floor of the machine.
3. Unplug the directional pedal assembly and the roller switch assembly from the main harness from the underside of the frame.
4. Discard the directional pedal and roller switch assemblies.
5. Connect the new directional pedal and roller switch assemblies to the main wire harness the same as the old directional pedal and roller switch assemblies.
6. Mount the new directional pedal and roller switch assembly to the floor of the machine with the 4 new mounting screws (27).
7. Start the machine, and check the directional pedal for proper operation.

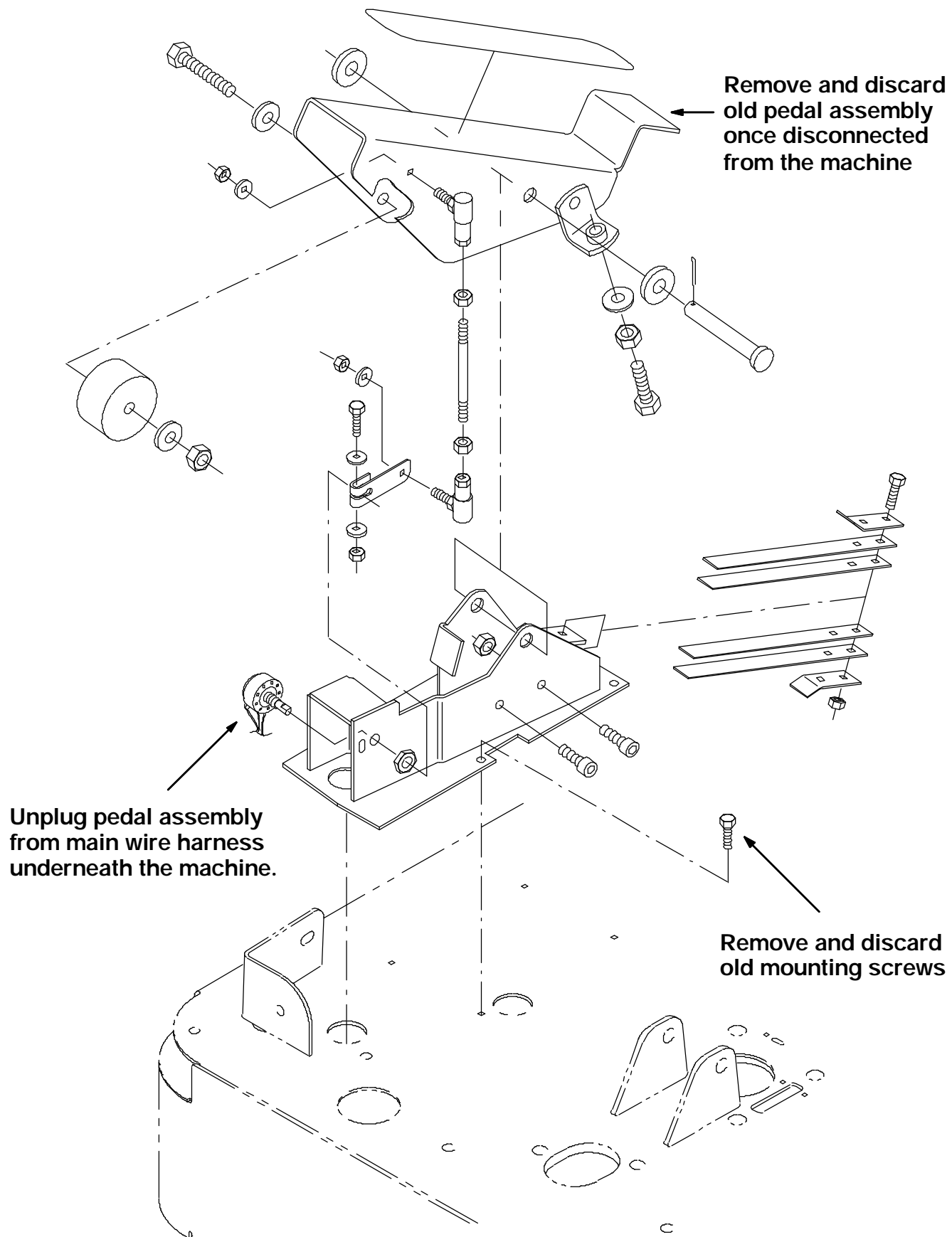


FIG. 1 - PEDAL ASSEMBLY REMOVAL

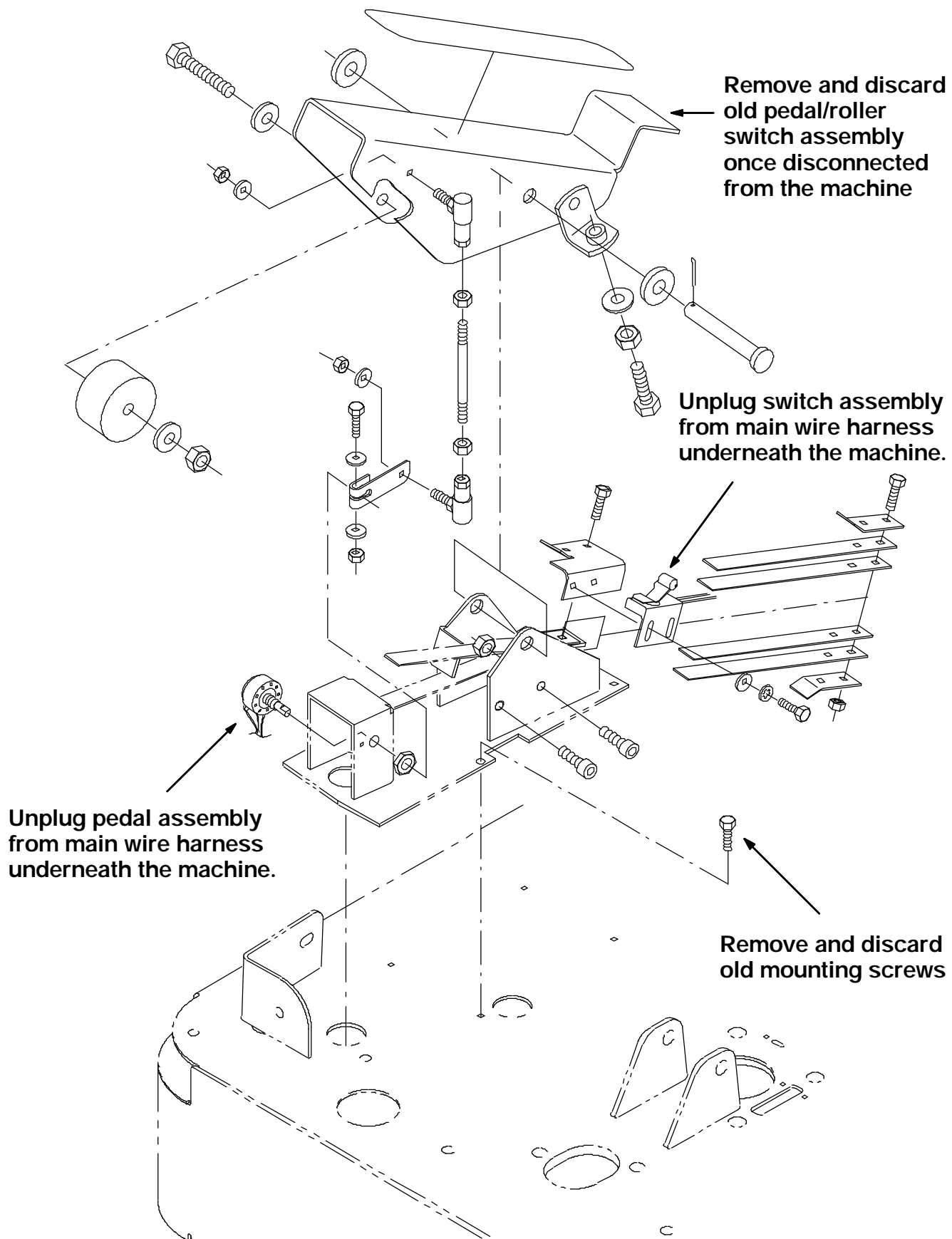


FIG. 2 - PEDAL/SWITCH ASSEMBLY REMOVAL

BILL OF MATERIALS FOR SPEED CONTROL REPLACEMENT KIT 384428

Ref.	TENNANT Part No.	Description	Qty.
1	81569	Plate wldt, control	1
2	223601	Retainer, spring	2
3	223600	Strip, control spring	4
4	06944	Screw, hex, M06-1.0 X 25, 8.8	2
5	08708	Nut, hex, lock M06-1.0	2
6	223320	Pedal, accelerator	1
7	87725	Spacer	1
8	06963	Screw, hex M10-1.5 X 60, 8.8	1
9	32485	Washer, flat, .38 SAE	1
10	08182	Pin, cotter	1
11	41430	Nut, hex, lock, M10-1.5	3
12	39309	Screw, soc, M10-1.5 X 25	2
13	13513	Nut, hex, lock, 0.25-28	2
14	82839	Pad	1
15	06474	Pin, clevis	1
16	32486	Washer, flat, 0.50 SAE	2
17	32899	Nut, hex, Jam, 0.25-28	2
18	81942	Potentiometer	1
19	32988	Washer, lock, int, 0.38	1
20	222607	Nut, hex, thin, .38-32	1
21	81989	Lever	1
22	25047	Screw, hex, 0.25-20 X 1.25, G5	1
23	32483	Washer, flat, .25 SAE	2
24	32981	Nut, hex, lock, 0.25-20	1
25	14601	Balljoint	2
26	384414	Rod, threaded, 2 end	2
27	74455	Screw, hex, FMG M06-1.0 X 12	4

BILL OF MATERIALS FOR SPEED CONTROL REPLACEMENT KIT 384429

Ref.	TENNANT Part No.	Description	Qty.
1	81569	Plate wldt, control	1
2	223601	Retainer, spring	2
3	223600	Strip, control spring	4
4	06944	Screw, hex, M06-1.0 X 25, 8.8	2
5	08708	Nut, hex, lock M06-1.0	2
6	223320	Pedal, accelerator	1
7	87725	Spacer	1
8	06963	Screw, hex M10-1.5 X 60, 8.8	1
9	32485	Washer, flat, .38 SAE	1
10	08182	Pin, cotter	1
11	41430	Nut, hex, lock, M10-1.5	3
12	39309	Screw, soc, M10-1.5 X 25	2
13	13513	Nut, hex, lock, 0.25-28	2
14	82839	Pad	1
15	06474	Pin, clevis	1
16	32486	Washer, flat, 0.50 SAE	2
17	32899	Nut, hex, Jam, 0.25-28	2
18	81942	Potentiometer	1
19	32988	Washer, lock, int, 0.38	1
20	222607	Nut, hex, thin, .38-32	1
21	81989	Lever	1
22	25047	Screw, hex, 0.25-20 X 1.25, G5	1
23	32483	Washer, flat, .25 SAE	2
24	32981	Nut, hex, lock, 0.25-20	1
25	14601	Balljoint	2
26	384414	Rod, threaded, 2 end	2
27	74455	Screw, hex, FMG M06-1.0 X 12	4
28	83265	Bracket, mtg, switch	1
29	59965	Switch	1
30	12312	Screw, hex, M05-0.8 X 12, 8.8	2
31	32980	Washer, lock, int	1
32	19066	Washer, flat, #10	2

TENNANT COMPANY
 P. O. Box 1452
 Minneapolis, MN 55440-1452