



# INSTRUCTION BULLETIN

No. 340320  
Machine: 7300/8300  
Published: 5-00/00  
System: SCRUBBING

**NOTE: DO NOT DISCARD the Parts List from the Instruction Bulletin. Place the Parts List in the appropriate place in your machine manual for future reference. Retaining the Parts List will make it easier to reorder individual parts and will save you the cost of ordering an entire kit.**

*NOTE: Numbers in parenthesis ( ) are reference numbers for parts listed in Bill of Materials.*

Installation instructions for kit number 386482

## **SYNOPSIS / PROBLEM:**

This kit contains the parts needed to install a detergent metering kit on the models 7300 scrubber and the 8300 sweeper/scrubber.

Please follow step-by-step instructions.

## **SPECIAL TOOLS / CONSIDERATIONS: NONE**

(Estimated time to complete: 2 hours)

## **PREPARATION:**

(Refer to FIG. 1 thru 6)

**FOR SAFETY: Before leaving or servicing machine, stop on level surface and set parking brake. Then turn off machine and remove key.**

1. Open the rear battery cover.
2. Disconnect battery cables from machine.



**WARNING: Always disconnect battery cables from machine before working on electrical components.**

3. Open the solution tank cover, and check that the solution tank is empty before installing the detergent metering kit.
4. Raise the machine with a hoist or jack stands to work on the underside of the machine.

**FOR SAFETY: When servicing the machine, block the machine tires before jacking the machine up.**

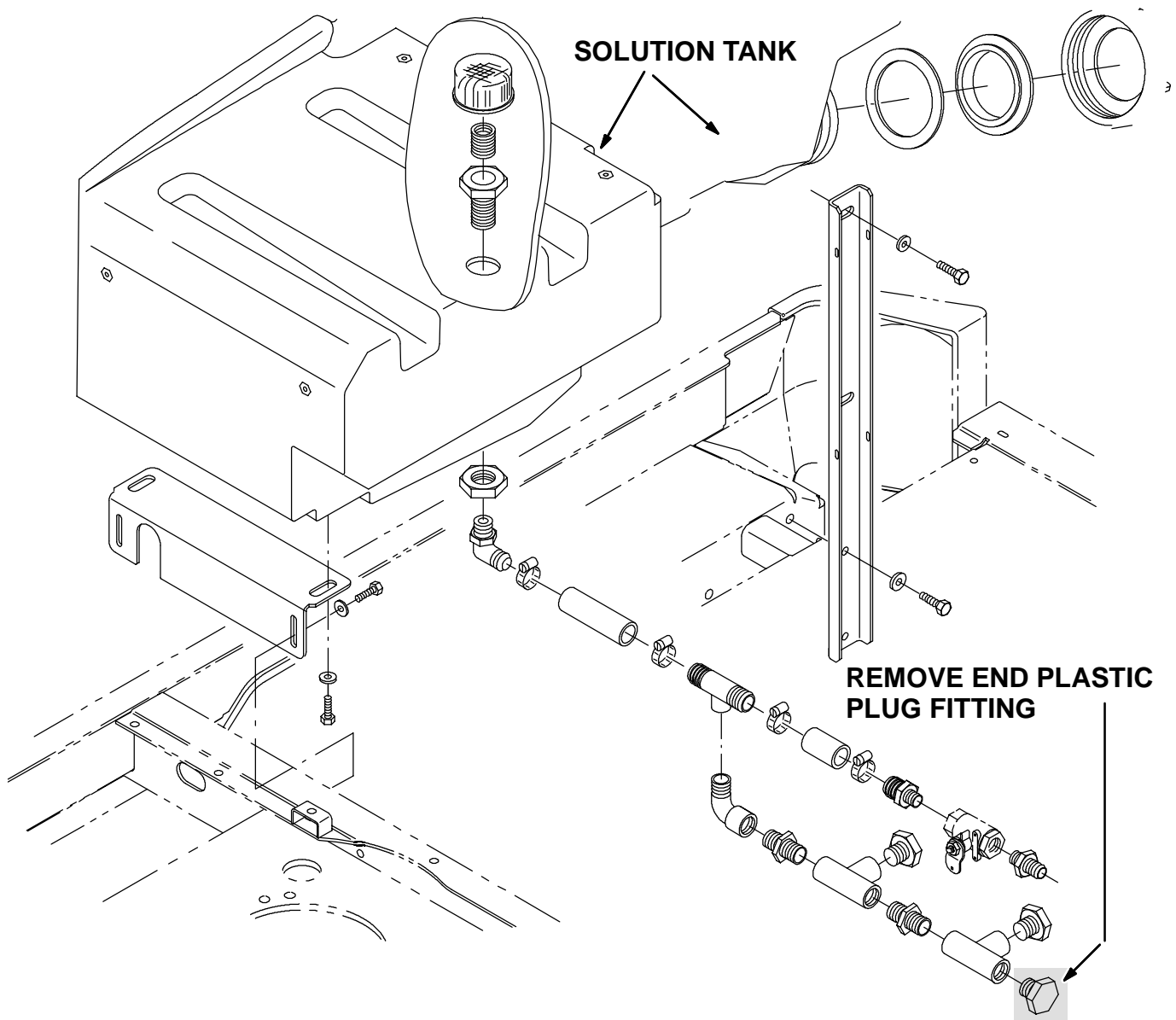
**FOR SAFETY: When servicing the machine, jack machine up at designated locations only. Block the machine up with jack stands.**

**FOR SAFETY: When servicing the machine, use a hoist or jack that will support the weight of the machine.**

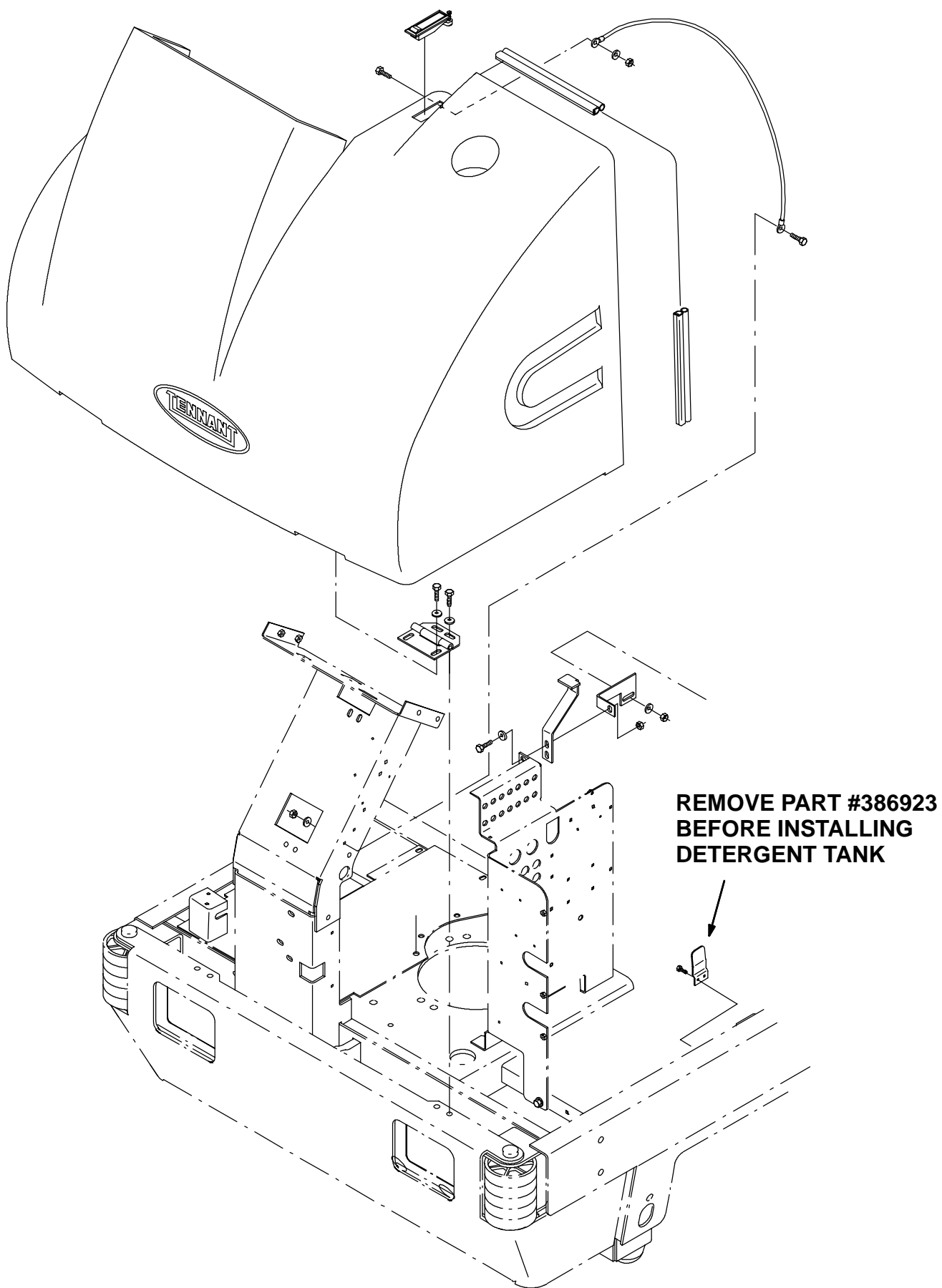
## **INSTALLATION:**

**(Refer to FIG. 1 thru 6)**

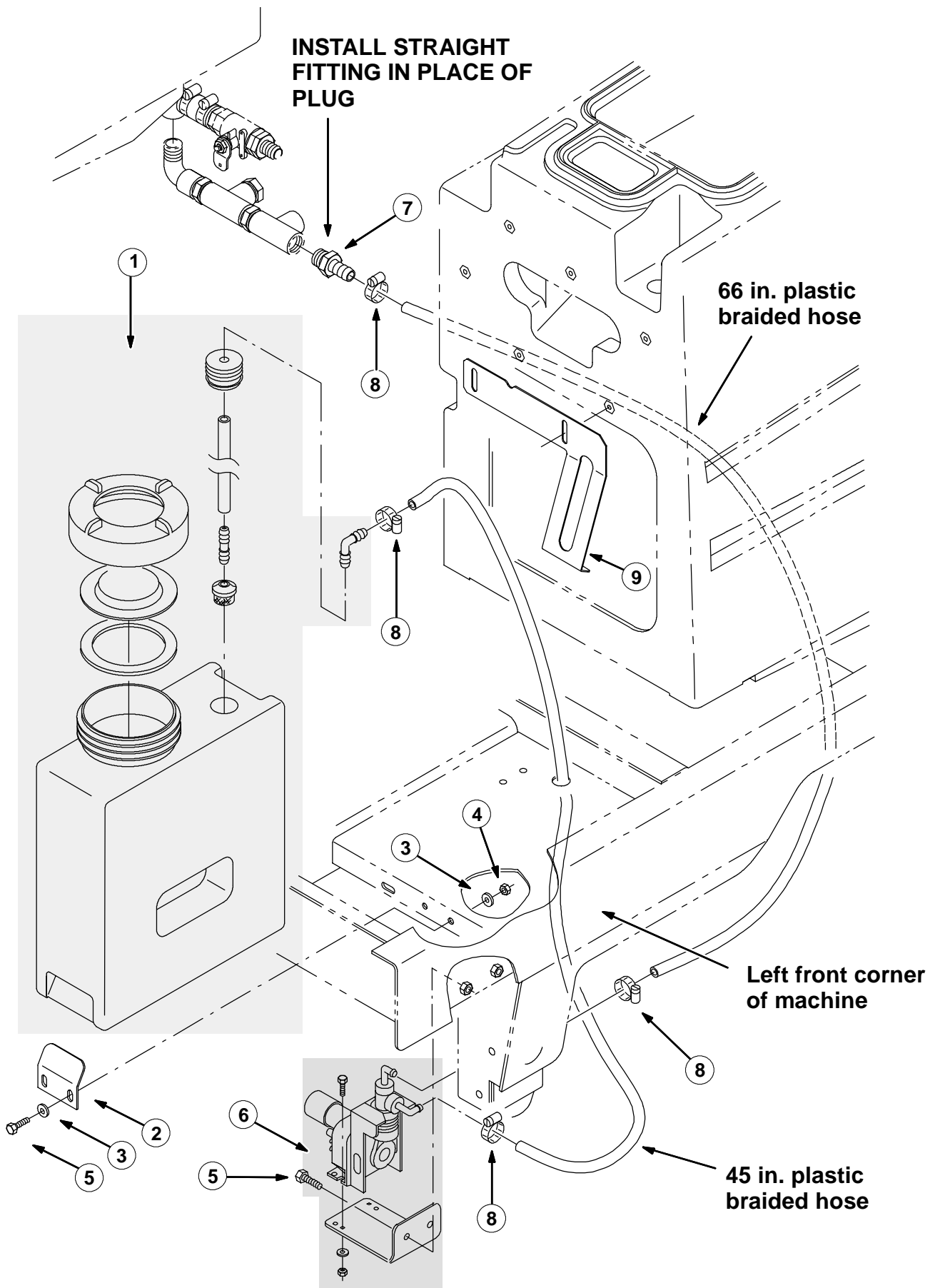
1. Locate the plastic fitting assembly extending from the beneath the solution tank.  
(Refer to FIG. 1)
2. Remove the plastic plug fitting from the end of the plastic tee fitting, as shown in figure 1.  
(Refer to FIG. 1)
3. Connect one end of the 66 in. plastic braided hose to the plastic tee fitting with the straight plastic fitting (7) and a hose clamp (8). (Refer to FIG. 3 and 4)
4. Route the hose over to the left side of the machine, and along the frame towards the front of the machine. (Refer to FIG. 3 and 5)
5. Connect the open end of the 66 in. plastic braided hose to the top hose connection of the detergent pump assembly (6) with a hose clamp (8). (Refer to FIG. 3)
6. Connect one end of the 45 in. plastic braided hose to the side hose connection of the detergent pump assembly (6) with a hose clamp (8). (Refer to FIG. 3)
7. Route the open end of the 45 in. plastic braided hose up through the hole in the floor of the machine frame. (Refer to FIG. 3)
8. Mount the detergent pump assembly (6) to the inside of the frame of the machine with two hex screws (5). (Refer to FIG. 3 and 6)
9. Connect the detergent pump assembly harness to the main wire harness. (Refer to FIG. 6)
10. Lower the machine to floor.
11. Open the front machine cover.
12. Remove cover plate 386923, and mounting hardware from the machine. (Refer to FIG. 2)
13. Install the detergent tank assembly (1) in the left front corner of the machine. Secure the detergent tank with the retaining bracket (9) and detergent tank mounting plate (2).  
(Refer to FIG. 3)
14. Connect one the open end of the 45 in. long braided hose to the plastic elbow fitting on the detergent tank assembly (1) with a hose clamp (8). (Refer to FIG. 3)
15. Fill the detergent tank half full with detergent.
16. Fill the solution tank with water.
17. Connect the battery cables to the machine. Close the rear battery cover.
18. Turn the machine power on. Begin scrubbing.
19. Check the detergent metering kit for proper operation.



**FIG. 1 - PLASTIC PLUG FITTING REMOVAL**

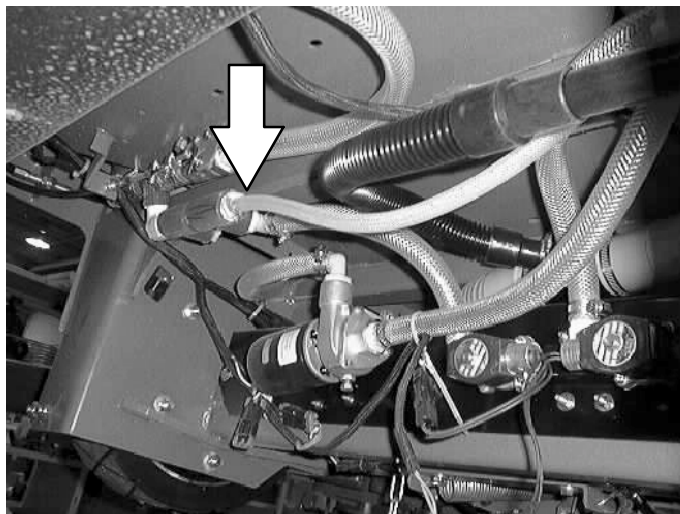


**FIG. 2 - COVER PLATE REMOVAL**



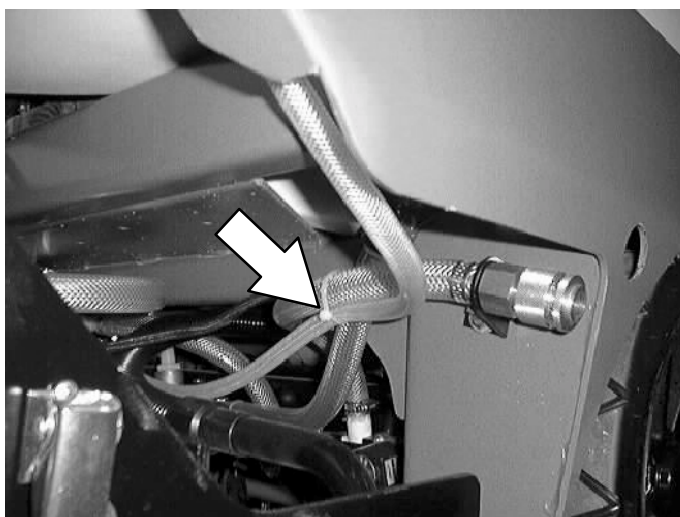
**FIG. 3 - DETERGENT METERING KIT INSTALLATION**

**Remove the end plastic plug fitting. Connect the 60 in. braided plastic hose to the tee fitting with the straight fitting and a hose clamp.**



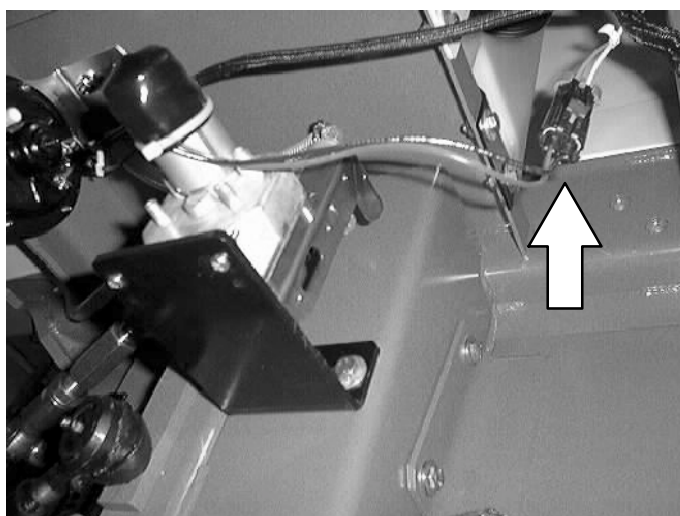
**FIG. 4**

**Route the 60 in. braided plastic hose over to the left hand side of the machine, along the frame, towards the front of the machine. Secure the hose in place with plastic wire ties.**



**FIG. 5**

**Connect the braided hoses to the detergent pump. Mount the detergent pump to the frame of the machine. Connect the pump wiring harness to the main harness.**



**FIG. 6**

**BILL OF MATERIALS FOR DETERGENT METERING KIT 386482**

<b>Ref.</b>	<b>TENNANT Part No.</b>	<b>Description</b>	<b>Qty.</b>
1	387174	Tank assy, detergent	1
2	386395	Plate, mtg, detergent tank	1
3	01685	Washer, flat, 0.31 SS	4
4	08713	Nut, hex, lock, M08-1.25, NL, SS	2
5	09023	Screw, hex, M08-1.25 X 35, SS	4
6	387173	Pump assy, detergent metering	1
7	73467	Fitting, plstc, str	1
8	43844	Clamp, wormdrive	6
9	386432	Bracket, retaining, tank, det	1

TENNANT COMPANY  
P. O. Box 1452  
Minneapolis, MN 55440-1452