



INSTRUCTION BULLETIN

No. 340312
Machine: ATLV 4300
Published: 7-01/01
System: OPTIONS

NOTE: DO NOT DISCARD the Parts List from the Instruction Bulletin. Place the Parts List in the appropriate place in your machine manual for future reference. Retaining the Parts List will make it easier to reorder individual parts and will save you the cost of ordering an entire kit.

NOTE: Numbers in parenthesis () are reference numbers for parts listed in Bill of Materials.

Installation instructions for kit number 368367

SYNOPSIS / PROBLEM:

This kit contains the parts needed to replace the brake stop levers on the model ATLV 4300. Please follow step-by-step instructions.

SPECIAL TOOLS / CONSIDERATIONS: BEARING PRESS

(Estimated time to complete: 1 hour)

PREPARATION:

(Refer to FIG. 1 and 2)

FOR SAFETY: Before leaving or servicing machine, stop on level surface and set parking brake. Then turn off machine and remove key.

FOR SAFETY: Before servicing parking brake stop, set opposite parking brake.

INSTALLATION:

(Refer to FIG. 1 and 2)

1. Press bearings (3) into both new parking brake stops (1) and (2). (Refer to FIG. 2)

NOTE: Some parking brake stops may already have the bearings pressed into them.

2. Remove the old parking brake stop and mounting hardware from the right hand side of the machine. Set the mounting hardware aside. (Refer to FIG. 1)
3. Remove the pin from the brake. (Refer to FIG. 1)
4. Install the new right hand parking brake stop (2) with the existing hardware.
(Refer to FIG. 1 and 2)
5. Remove the old parking brake stop and mounting hardware from the left hand side of the machine. Set the mounting hardware aside.
6. Remove the pin from the brake. (Refer to FIG. 1)
7. Install the new left hand parking brake stop (1) with the existing hardware.
(Refer to FIG. 1 and 2)
8. Adjust brake pedals for only 1/2 inch of free travel.

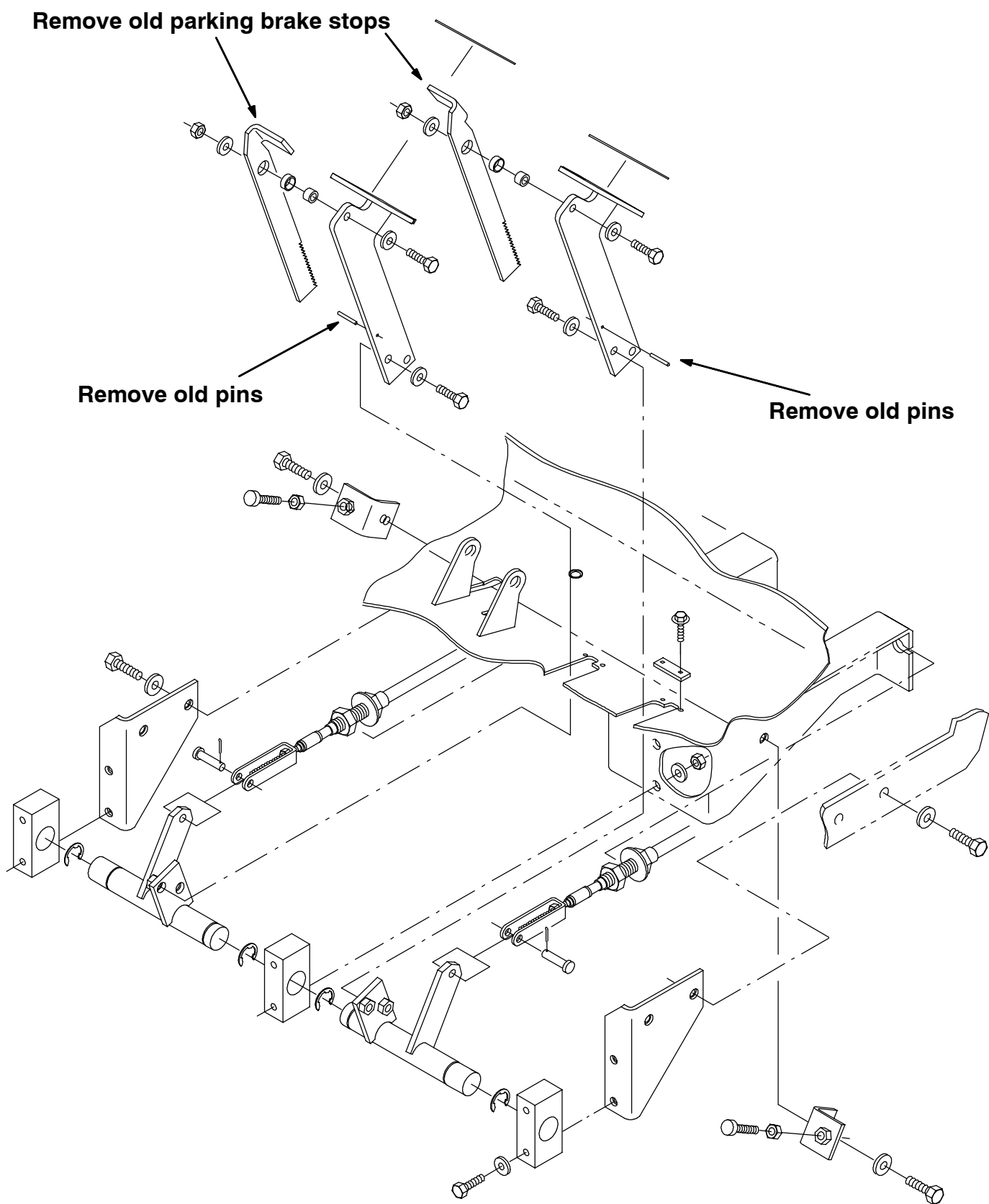


FIG. 1 - PARKING BRAKE STOP REMOVAL

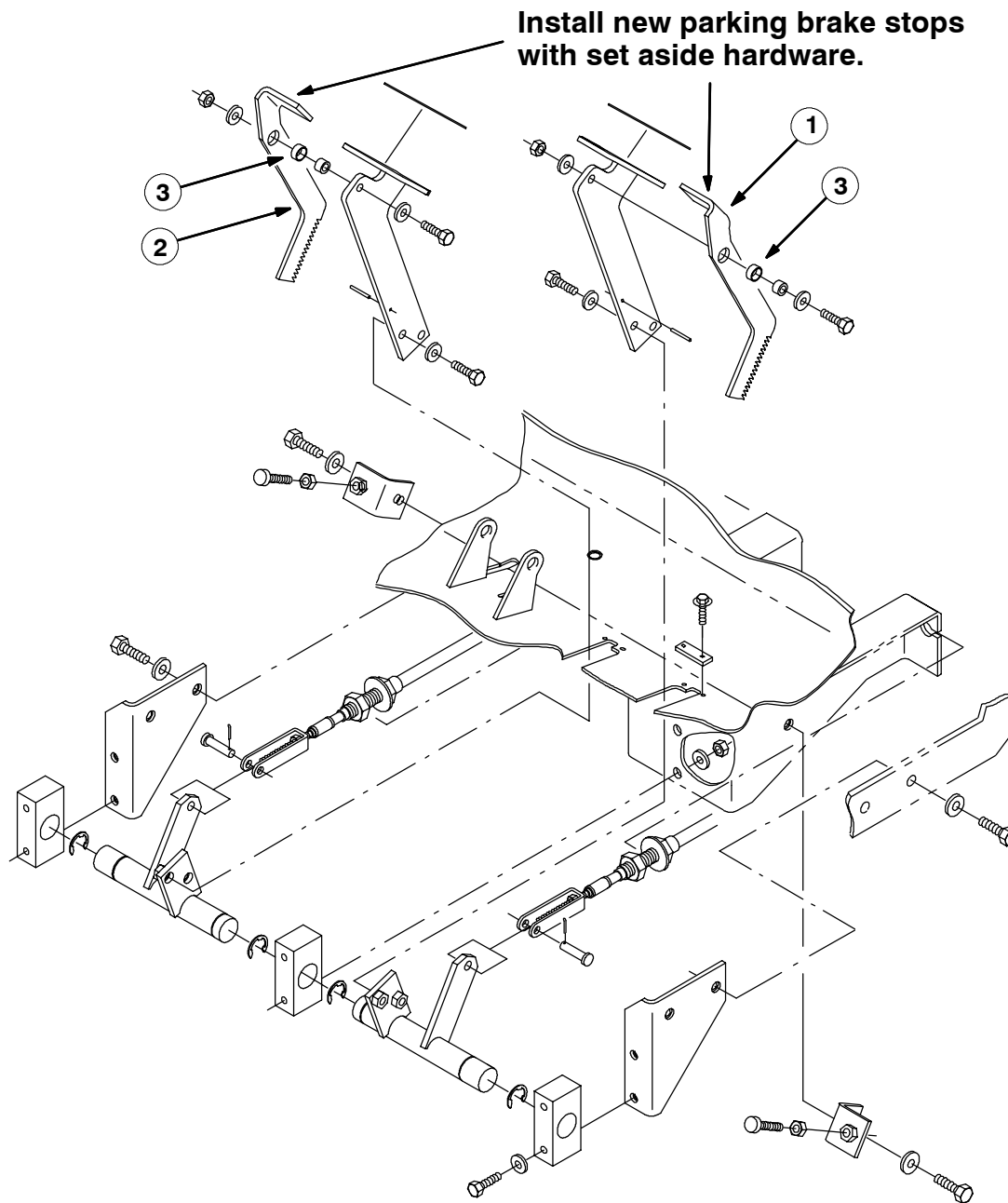


FIG. 2 - NEW PARKING BRAKE STOP ASSEMBLY

BILL OF MATERIALS FOR BRAKE STOP LEVER KIT 368367

Ref.	TENNANT Part No.	Description	Qty.
1	368365	Stop lever, brake, left hand	1
2	368364	Stop lever, brake, right hand	1
3	367452	Bearings	2

TENNANT COMPANY
P. O. Box 1452
Minneapolis, MN 55440-1452