



INSTRUCTION BULLETIN

No. 340310
Machine: 8410
Published: 6-99/00
System: ENGINE

NOTE: DO NOT DISCARD the Parts List from the Instruction Bulletin. Place the Parts List in the appropriate place in your machine manual for future reference. Retaining the Parts List will make it easier to reorder individual parts and will save you the cost of ordering an entire kit.

NOTE: Numbers in parenthesis () are reference numbers for parts listed in Bill of Materials.

Installation instructions for kit number 369720

SYNOPSIS / PROBLEM:

This kit contains the parts needed to replace and reposition the lock out on the 8410 model sweeper.

Please follow step-by-step instructions.

SPECIAL TOOLS / CONSIDERATIONS: NONE

(Estimated time to complete: 1 hours)

PREPARATION:

(Refer to FIG. 1 thru 8)

FOR SAFETY: Before leaving or servicing machine, stop on level surface and set parking brake. Then turn off machine and remove key.

1. Close the LP tank valve. Start the machine and let it run until the engine stops.
2. Disconnect battery cables from machine.



WARNING: Always disconnect battery cables from machine before working on electrical components.

3. Disconnect and remove the LPG tank from the machine.



WARNING: Keep flames and sparks away from LPG fuel system service area. Keep area well ventilated.

LPG FILTER REMOVAL:

(Refer to FIG. 1 thru 8)

1. Open the side engine door and top engine cover.
2. Lift open the seat plate.
3. Locate the vaporizer group mounted above the engine. (Refer to FIG. 1)
4. Disconnect and remove the vacuum hose above the vaporizer group for easier access.
5. Disconnect and remove the fuel line connecting the LPG vaporizer to the LPG fuellockoff filter. (Refer to FIG. 1)
6. Disconnect and remove the vacuum hose from the fitting in the LPG fuellockoff filter. (Refer to FIG. 1)

7. Disconnect and remove the fuel line from the 90° LPG fuellockoff fitting. (Refer to FIG. 1)
8. Disconnect and remove the pressure switch wire harness from the pressure switch and main harness.
9. Disconnect and remove the LPG fuellockoff filter and pressure switch assembly from the vaporizer mounting plate. (Refer to FIG. 1)
10. Mount the new LPG fuellockoff filter (1) to the angle plate (2) with mounting screws (3). (Refer to FIG. 3)
11. Set assembled LPG fuellockoff filter (1), fittings and hoses (8 and 13) aside. (Refer to FIG. 3)
12. Locate the release valve in the rear of the machine next to the LPG tank. (Refer to FIG. 2 and 4)
13. Disconnect both LPG hoses from the release valve assembly and remove the valve assembly from the machine. (Refer to FIG. 2 and 4)
14. Reassemble the release valve assembly with the new 90° elbow (9) to match the photos in figures 4, 5 and 6. (Refer to FIG. 4, 5 and 6)

NOTE: Install all LPG hoses and valves with an even amount of thread sealant on male threads.

15. Mount the new fuellock filter (1), hoses (8 and 13) and valve assembly to the machine with the new angle bracket (2) and screws (18) and (19). (Refer to FIG. 6)
16. Reconnect the LPG tank hose to the bottom tee fitting on the release valve assembly. (Refer to FIG. 5)
17. Connect the open end of the new short LPG hose (8) to the new 90° elbow (9) on the release valve assembly.
18. Connect the new wire harness (15) to the pressure switch (7). Run the harness up along the main harness and connect the new harness to the main harness. (Refer to FIG. 6 and 8)
19. Route the new long LPG hose (13) from the fuellockoff filter (1), up through the engine compartment, in between the hydraulic tank and the cooling tube. Connect the hose to the LPG vaporizer elbow fitting. Wire tie the hose to the main wiring harness to keep it from rubbing on the hydraulic tank. (Refer to FIG. 6 and 7)
20. Route the vacuum hose (16) along the LPG hose (13) up through the engine compartment, and connect to the carburetor. (Refer to FIG. 5)
21. Disconnect the hydraulic hose that runs behind the engine and along the hydraulic tank. Install the sleeve (17) over the hose and reconnect the hose. (Refer to FIG. 8)
22. Replace and secure the vacuum hose above the vaporizer group.
23. Replace the LPG tank.
24. Reconnect the short LPG hose from the release valve assembly to the LPG tank. Open the LPG tank.
25. Start the machine and check for proper operation.

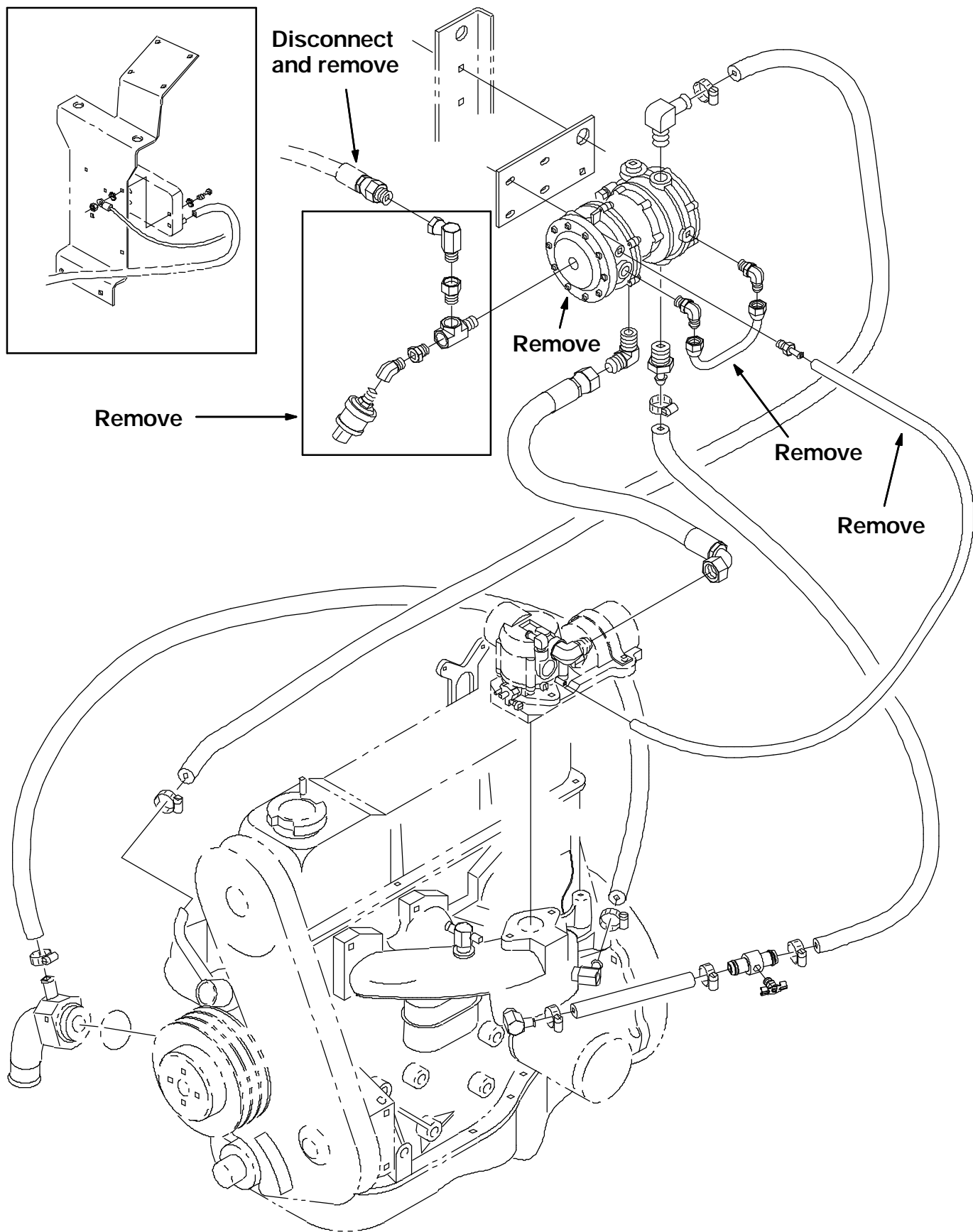


FIG. 1 - OLD FUELOCK FILTER GROUP REMOVAL

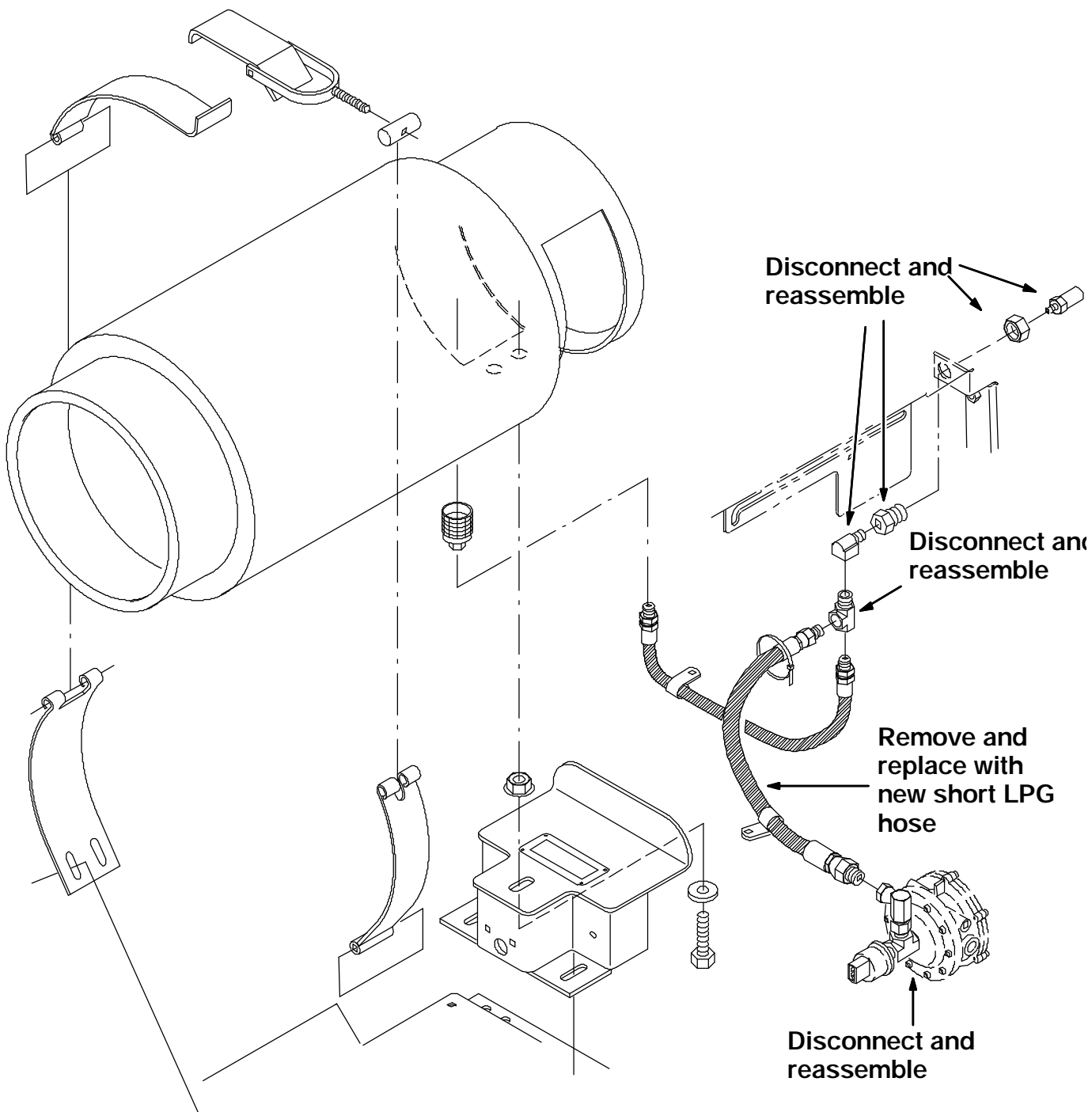


FIG. 2 - PRESS RELIEF VALVE REASSEMBLY

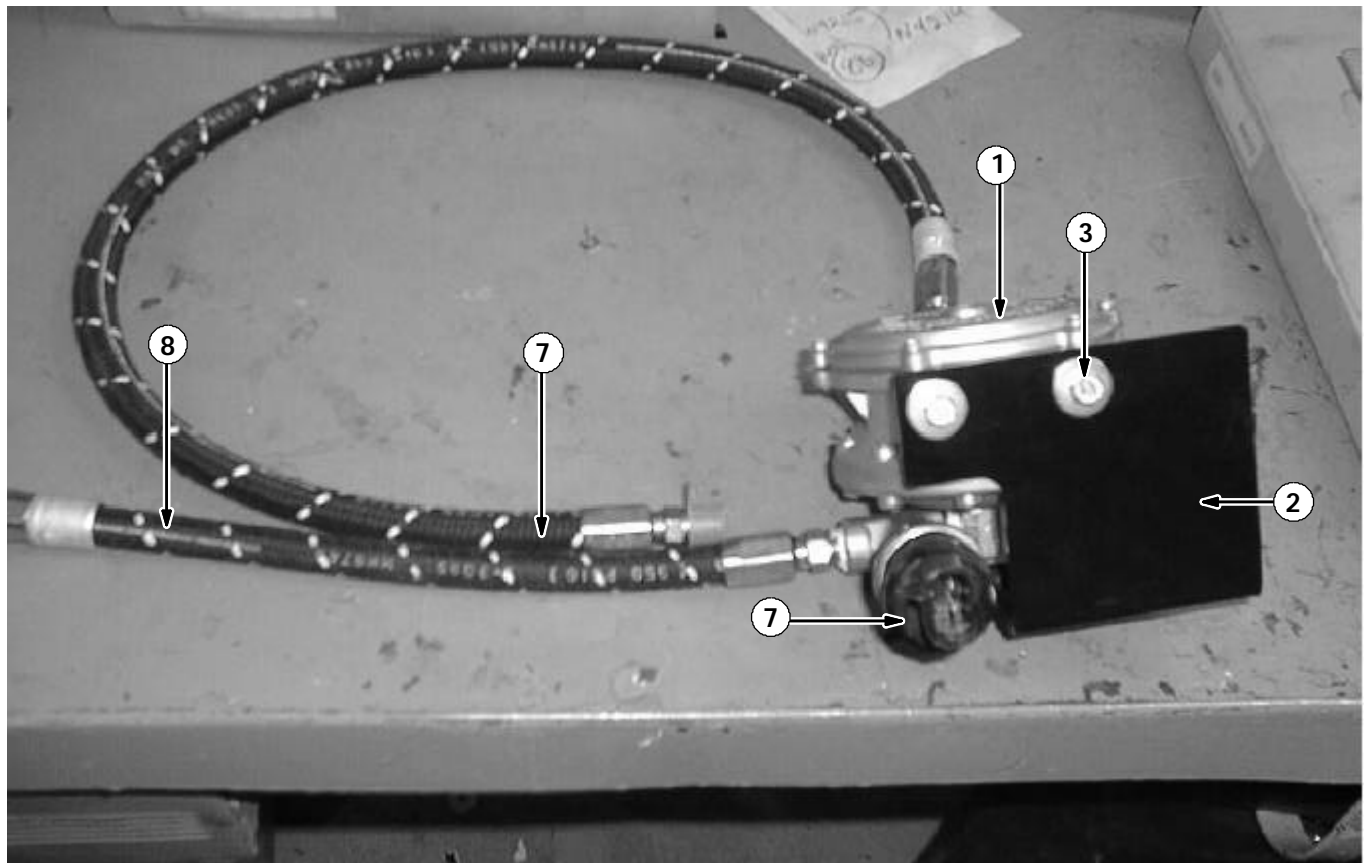


FIG. 3 - NEW FUELOCK FILTER ASSEMBLY

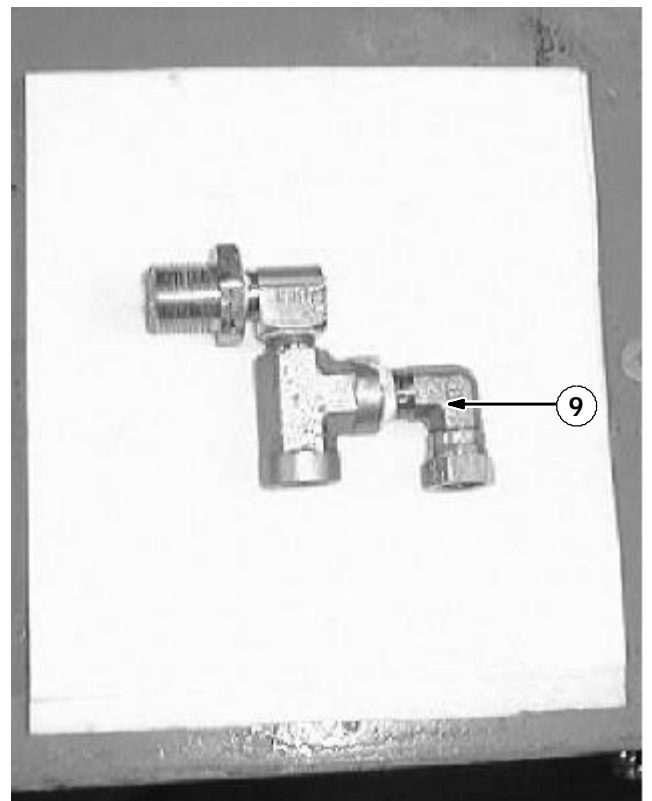
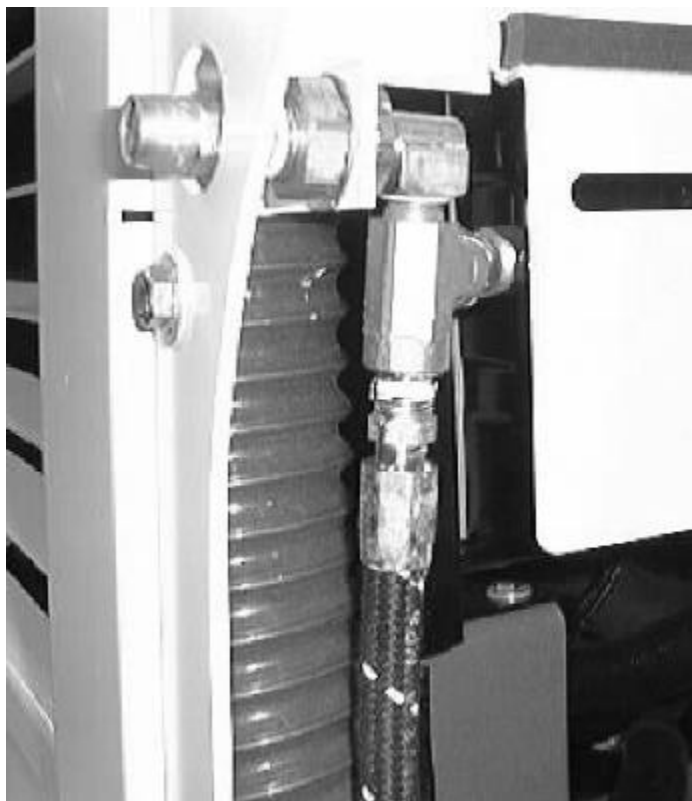


FIG. 4 - NEW PRESSURE SWITCH AND LPG HOSE INSTALLATION

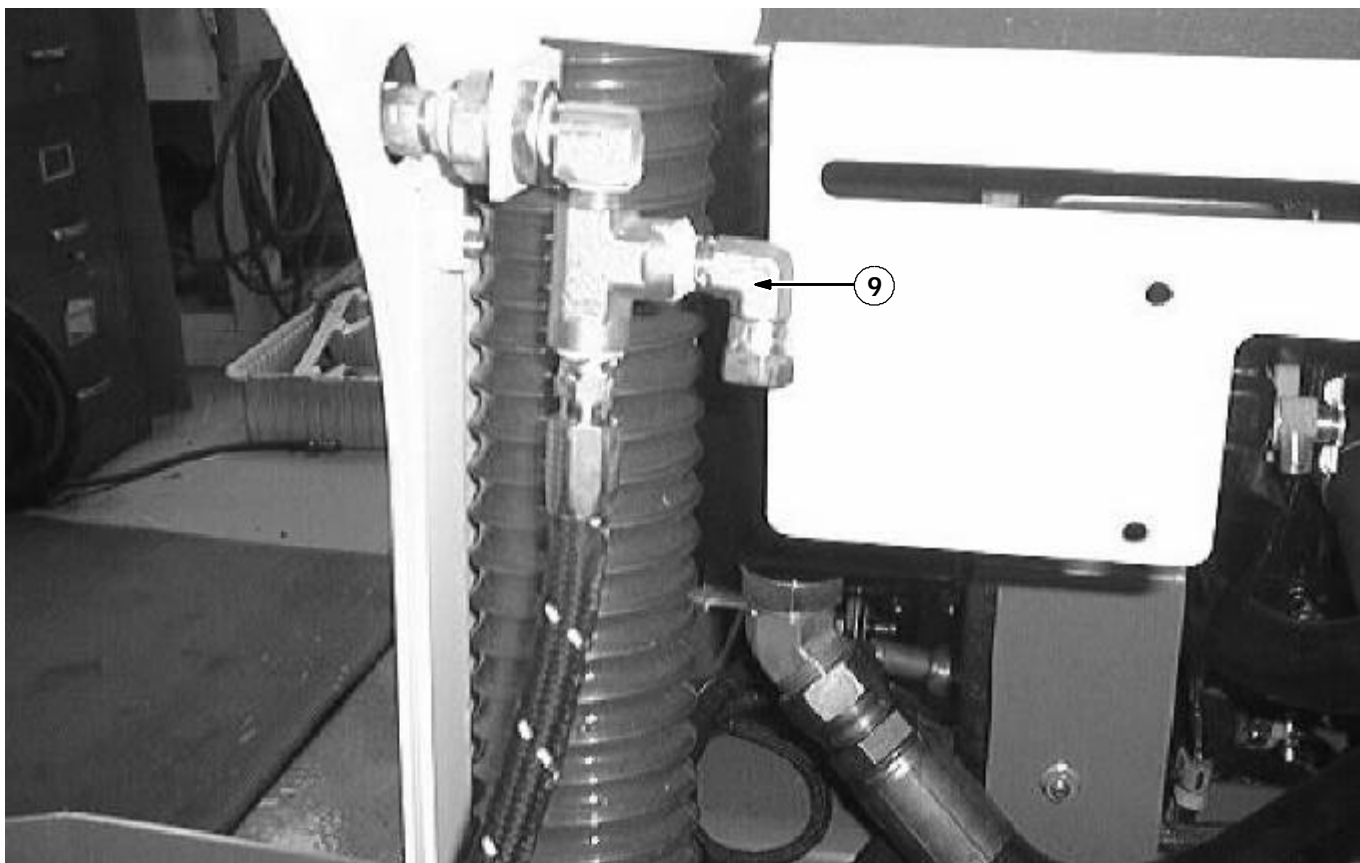


FIG. 5 - NEW PRESS RELIEF VALVE ASSEMBLY INSTALLATION

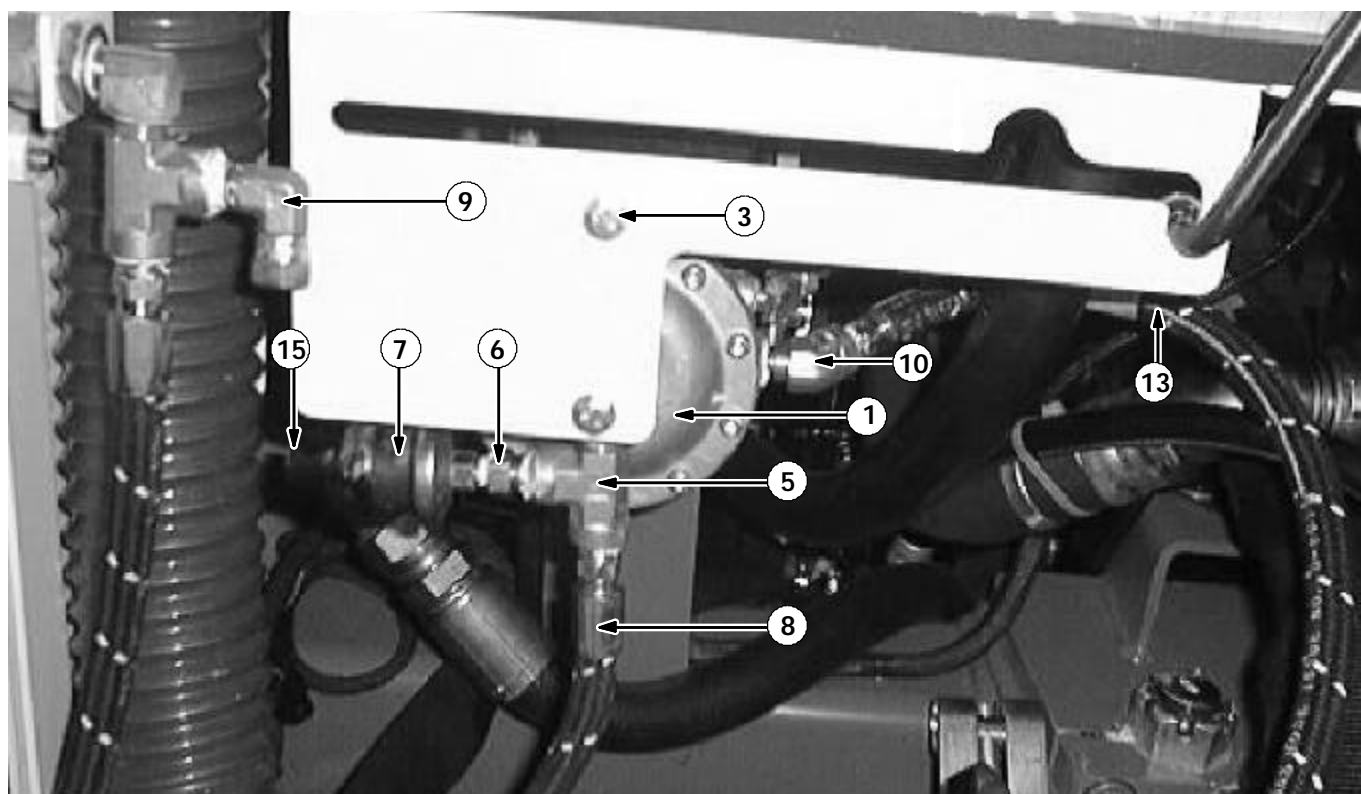


FIG. 6 - NEW FUELOCKOFF FILTER INSTALLATION

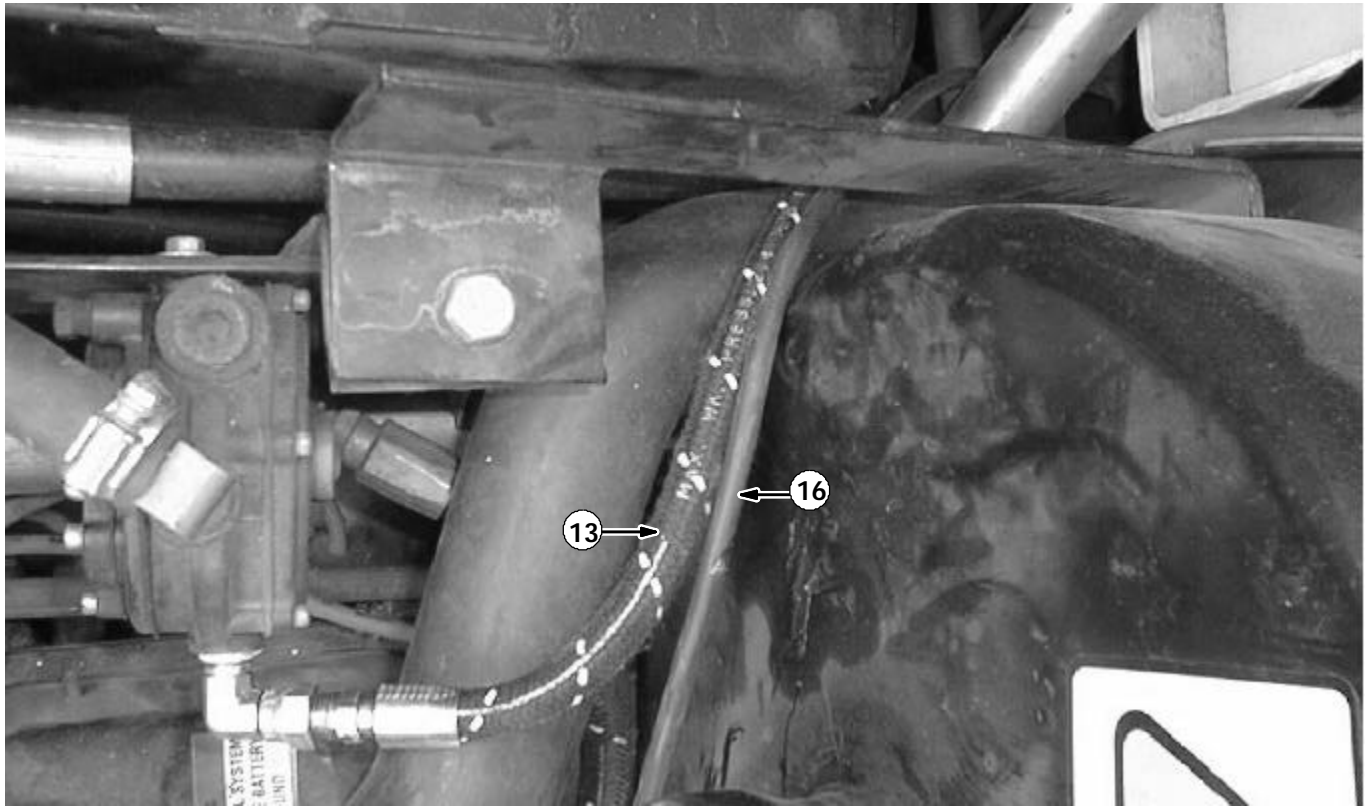


FIG. 7 - NEW LPG LINE AND VACUUM HOSE INSTALLATION (TOP VIEW)

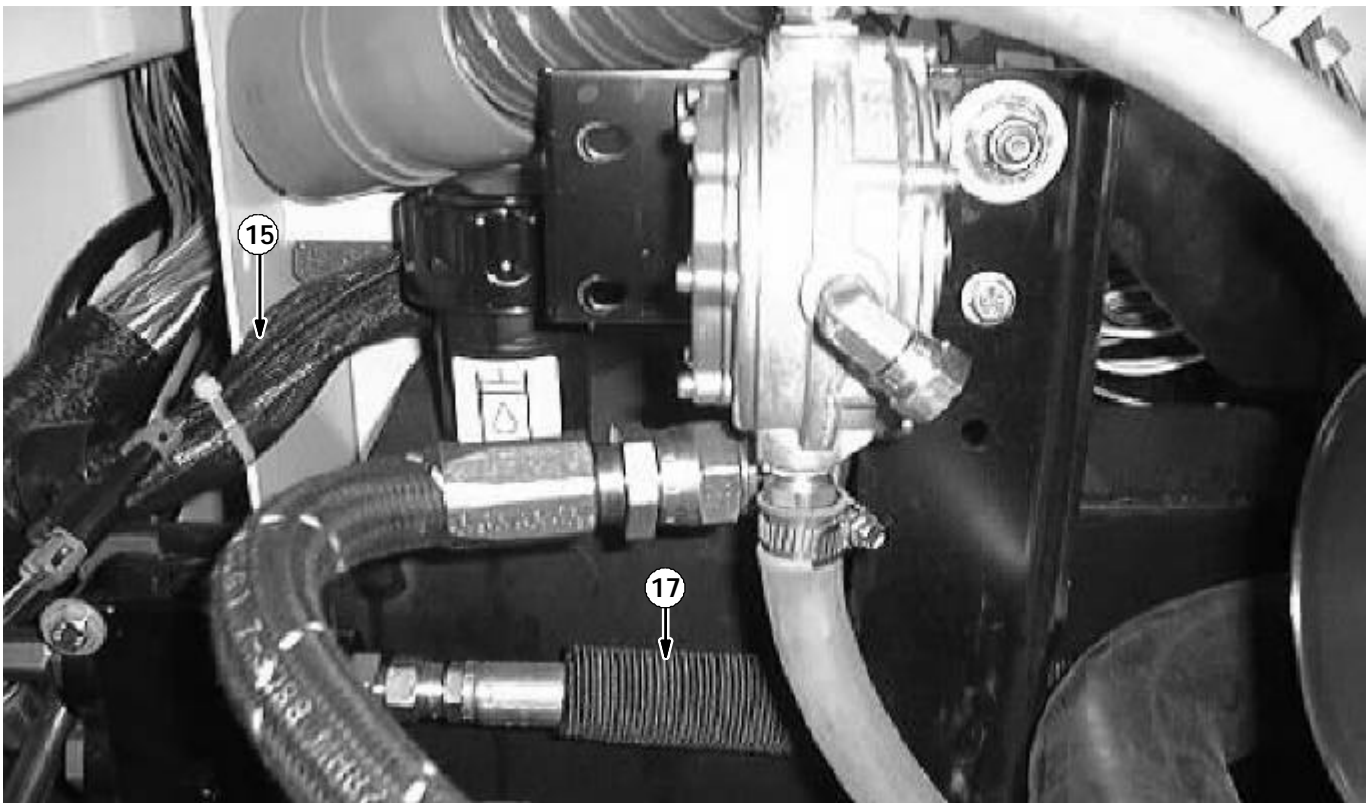


FIG. 8 - HYDRAULIC SLEEVE INSTALLATION

BILL OF MATERIALS FOR 8410 LPG LOCKOUT KIT 369720

Ref.	TENNANT Part No.	Description	Qty.
1	73020	Filter, fuelock off, LPG	1
2	369719	Angle	1
3	16949	Screw, hex, .25-20 X 0.75	2
4	27048	Fitting, pipe, elbow	1
5	56976A	Fitting, tee	1
6	17414	Fitting, hyd, str	1
7	23156	Switch	1
8	22308-6	Hose, LPG	1
9	11442-1	Fitting, elbow	2
10	47720	Fitting, hyd, elbow	1
11	24976	Fitting, brass, elbow	1
12	40607	Fitting, brass, str	1
13	22308-3	Hose, LPG	1
14	11442-1	Fitting, elbow	1
15	369722	Harness, regulator, jumper 8400/8410	1
16	369723	Hose, vacuum	1
17	87677	Sleeve	1
18	15678	Screw, hex, M6-1.0	2
19	32490	Washer, flat .25 hard	2

TENNANT COMPANY
P. O. Box 1452
Minneapolis, MN 55440-1452