



INSTRUCTION BULLETIN

No. 340296
Machine: 830-II
Published: 5-99/00
System: OPTIONS

NOTE: DO NOT DISCARD the Parts List from the Instruction Bulletin. Place the Parts List in the appropriate place in your machine manual for future reference. Retaining the Parts List will make it easier to reorder individual parts and will save you the cost of ordering an entire kit.

NOTE: Numbers in parenthesis () are reference numbers for parts listed in Bill of Materials.

Installation instructions for kit number 765269

SYNOPSIS / PROBLEM:

This kit contains the parts needed to install a rotating light brush guard kit on the model 830-II sweeper.

Please follow step-by-step instructions.

SPECIAL TOOLS / CONSIDERATIONS: Hand drill, 3/16 in. drill bit

(Estimated time to complete: .5 hour)

INSTALLATION:

(Refer to FIG. 1)

FOR SAFETY: Before leaving or servicing machine, stop on level surface and set parking brake. Then turn off machine and remove key.

1. Using the brush guard (1) as a template, position the guard over the rotating light. Mark the three mounting holes. Remove the brush guard.

NOTE: Before drilling, make sure both sides of the mounting surfaces are clear of any parts or wires. Drill only through the sheet metal of the cab roof, do not drill through the upholstery.

2. Drill the three mounting holes to 3/16 in.
3. Position the brush guard (1) over the rotating light. Use the hardware provided in the mounting kit.

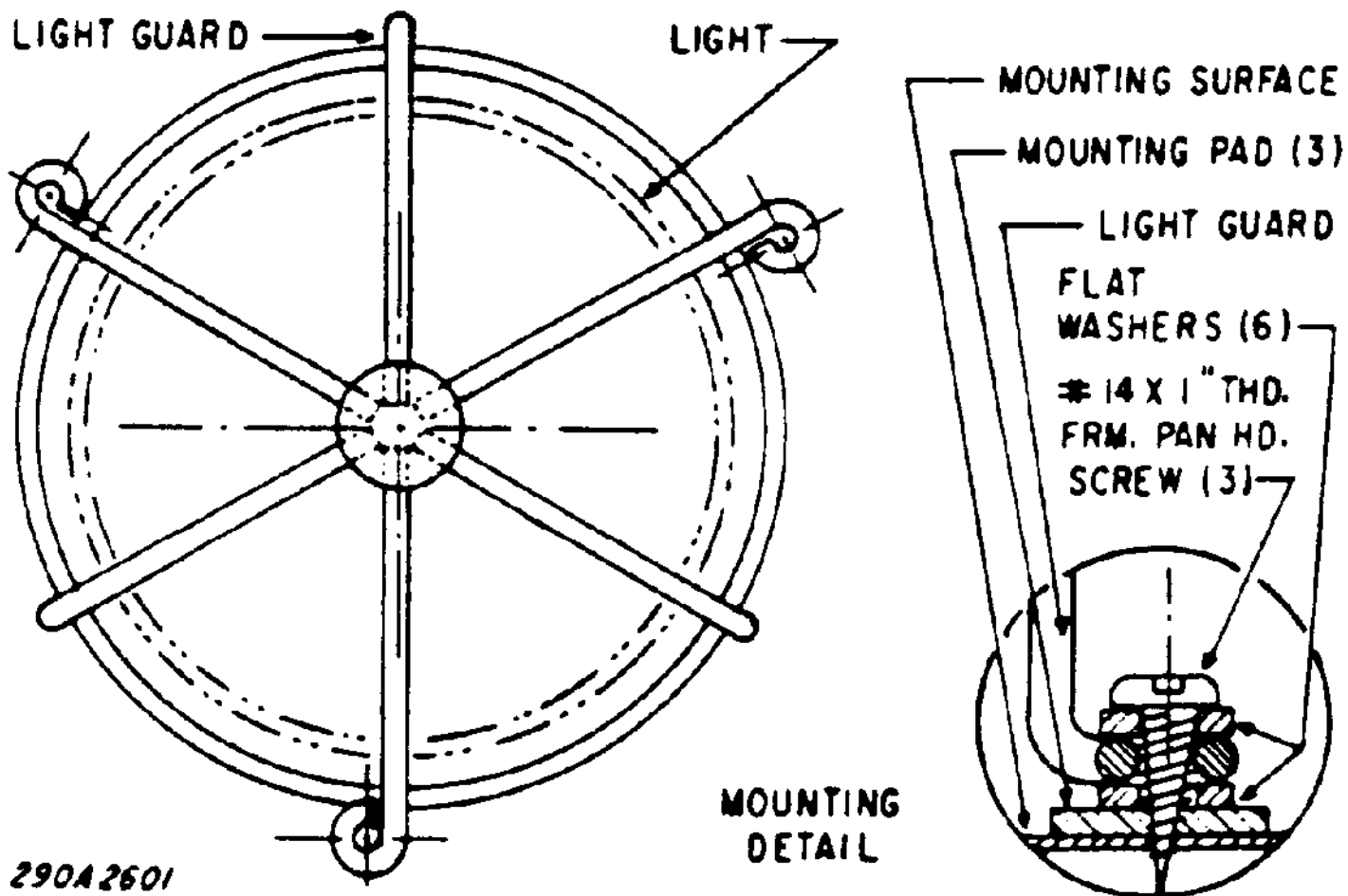


FIG. 1 - Brush Guard Assembly

BILL OF MATERIALS FOR ROTATING LIGHT BRUSH GUARD KIT 765269

Ref.	TENNANT Part No.	Description	Qty.
1	768604	Brush guard, light	1

TENNANT COMPANY
P. O. Box 1452
Minneapolis, MN 55440-1452