



INSTRUCTION BULLETIN

No. 340268
Machine: 8200 8210
Published: 6-99/02
System: SCRUBBING

NOTE: DO NOT DISCARD the Parts List from the Instruction Bulletin. Place the Parts List in the appropriate place in your machine manual for future reference. Retaining the Parts List will make it easier to reorder individual parts and will save you the cost of ordering an entire kit.

NOTE: Numbers in parenthesis () are reference numbers for parts listed in Bill of Materials.

Installation instructions for kit number 365381, 365382, 365383, and 364384

SYNOPSIS / PROBLEM:

This kit contains the parts needed to replace the front and rear squeegee blades on the model 8200 or 8210 sweeper/scrubber.

Please follow step-by-step instructions.

NOTE: Place the last page of this IB in your Tennant parts manual for re-ordering of squeegee blades.

SPECIAL TOOLS / CONSIDERATIONS: None

(Estimated time to complete: .5 hour)

INSTALLATION OF SQUEEGEE BLADES:

(Refer to FIG. 1)

FOR SAFETY: Before leaving or servicing machine, stop on level surface and set parking brake. Then turn off machine and remove key.

1. Make sure the rear squeegee is in the raised position.
2. Pull back on the end of the squeegee blade lock latches.
3. Loosen the retainer straps from the front and rear of the squeegee frame.
4. Remove the existing squeegee blades from the squeegee frame.
5. Install the new rear squeegee blade (2).
6. Install the new front squeegee blade (1).
7. Reinstall the retainer straps.
8. Push down on the end of the squeegee blade lock latches to lock the retainers and blades in place.

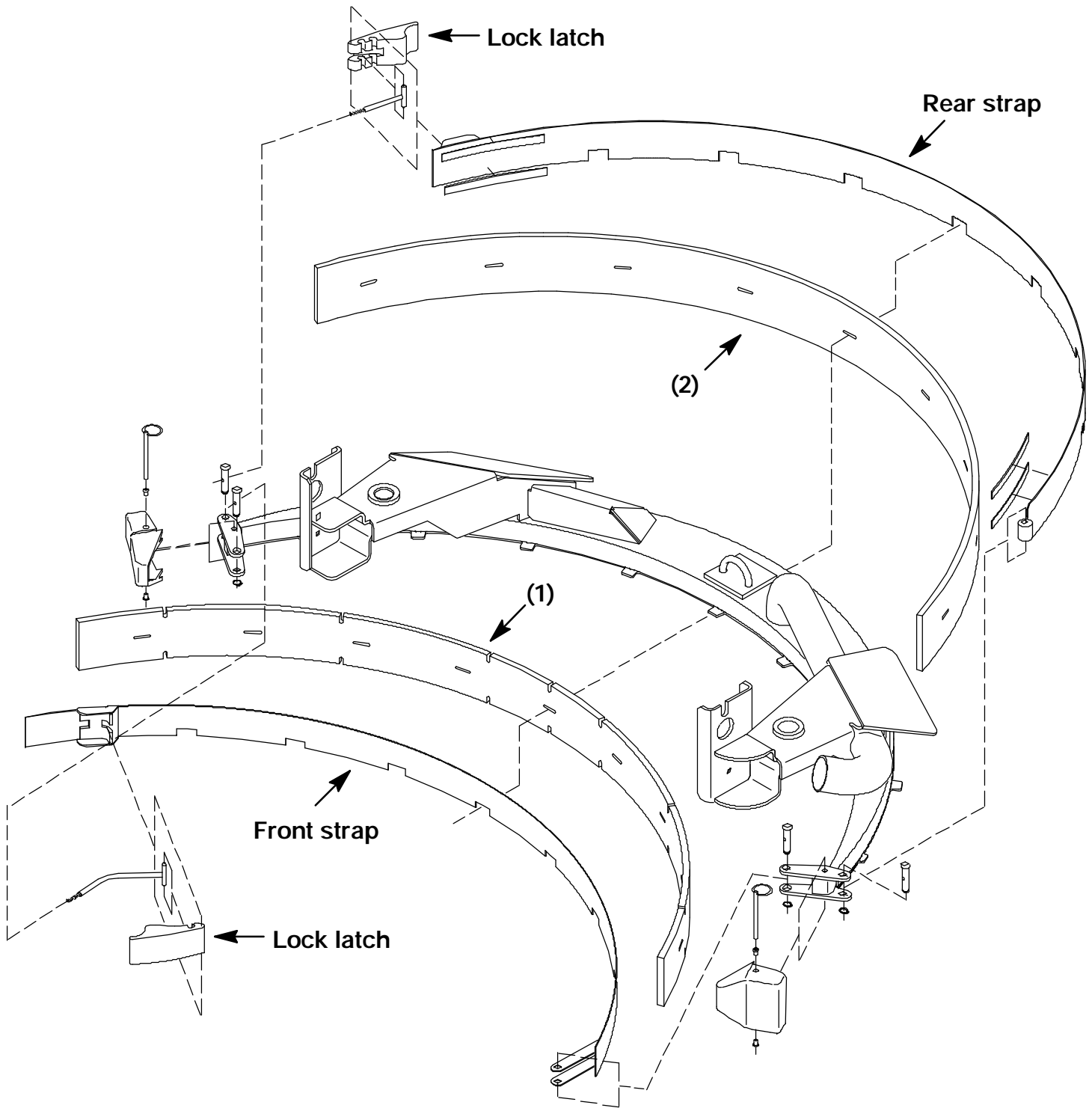


FIG. 1 - Rear Squeegee Assembly

SQUEEGEE ADJUSTMENT:

(Refer to FIG. 2 and 3)

FOR SAFETY: Before leaving or servicing machine, stop on a smooth level surface and set parking brake. Then turn off machine and remove key.

1. Start the machine, lower the squeegee, and move forward. Stop the machine.
2. Go to the back of the machine and check the rear squeegee for even deflection across the entire blade.
3. If either side of the squeegee has more blade deflection than the other -- an adjustment should be made. Go to step 4.
4. Start the machine and raise the rear squeegee. Loosen the squeegee caster locking knobs and raise the casters 2 or 3 turns. Lower the rear squeegee and turn off the machine.
(Refer to FIG. 2)
5. Loosen the hex screw on the outside of the adjustment cam on the upper squeegee link, at the squeegee frame. On both sides. **(Do not loosen screws more than 1/2-3/4 turn or until cam can move by turning with wrench).** (Refer to FIG. 3)
6. Place a wrench on the hex flats of the cam. **Turn the cams toward the front of the machine to lower the middle of the squeegee. Turn the cams toward the rear of the machine to raise the middle of the squeegee.** Normally the machined groove on the top of the cam will be either straight up or slightly to the rear of the machine. Cams on both sides should be roughly at the same orientation. (Refer to FIG. 3)

NOTE: Perform this adjustment one side at a time, tightening the adjustment cam hex screw after the adjustment has been made on one side before adjusting the other side.

NOTE: Always hold the adjusting cam in position while tightening the hex screw. Torque the hex screw to 17ft. lbs.

7. Press against the back of the rear squeegee with fingers and check for even floor contact across the entire blade. Readjust either side of the blade that may still curl under from lack of contact with the floor.
8. Turn the casters back down until they touch the floor, then turn the caster back up two full turns. Lock the caster jam nuts. (Refer to FIG. 3)

NOTE: Be sure to hold the caster adjuster in position while tightening the lock knob.

9. Start the machine and drive forward with the rear squeegee in the lowered position. Check the blade for even deflection. Make any final adjustments in 1/8 turn increments at the caster knob.
11. Operate the machine and check the rear squeegee for proper water pick up.

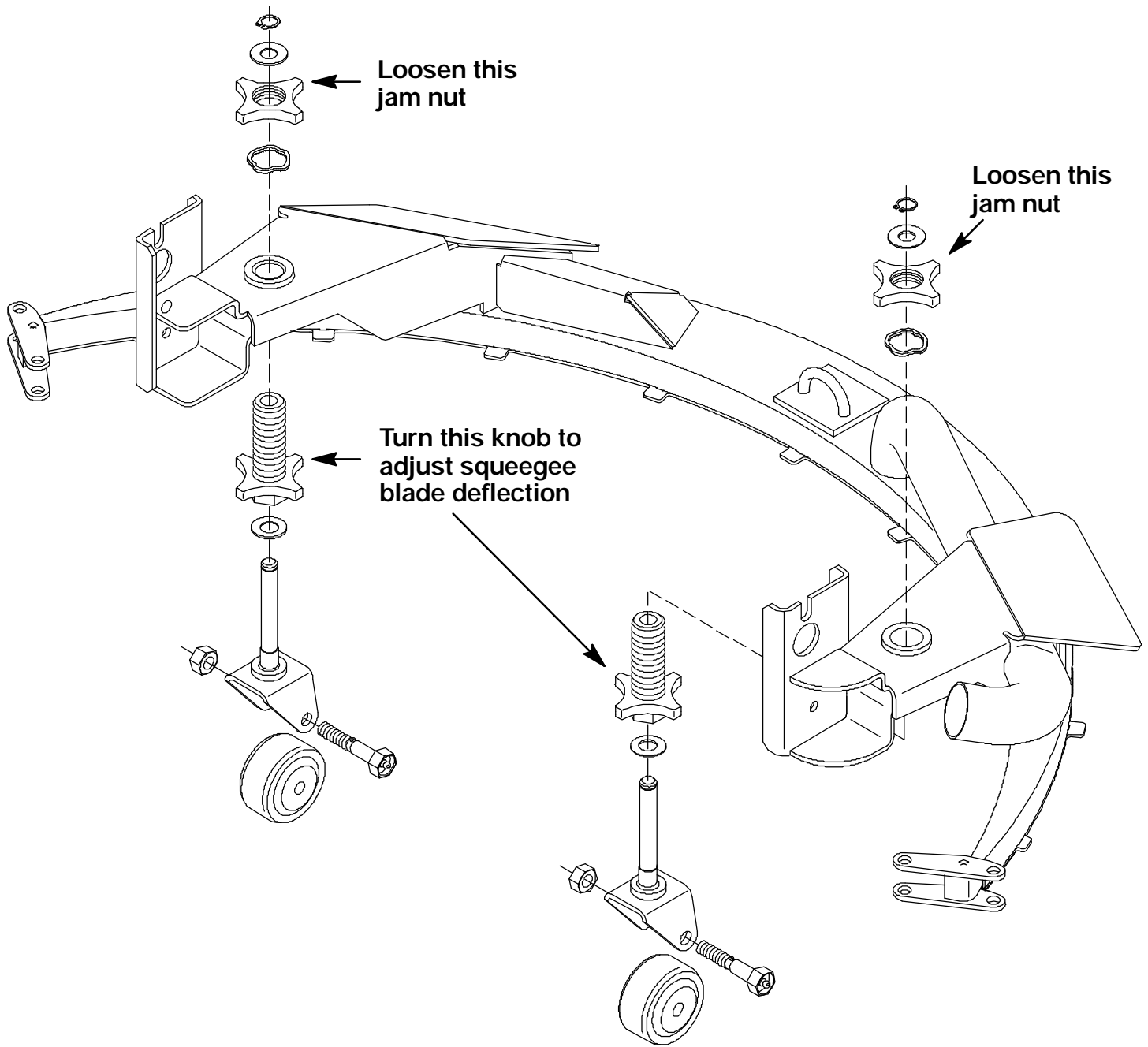


FIG. 2 - Squeegee Blade Deflection Adjustment Knobs

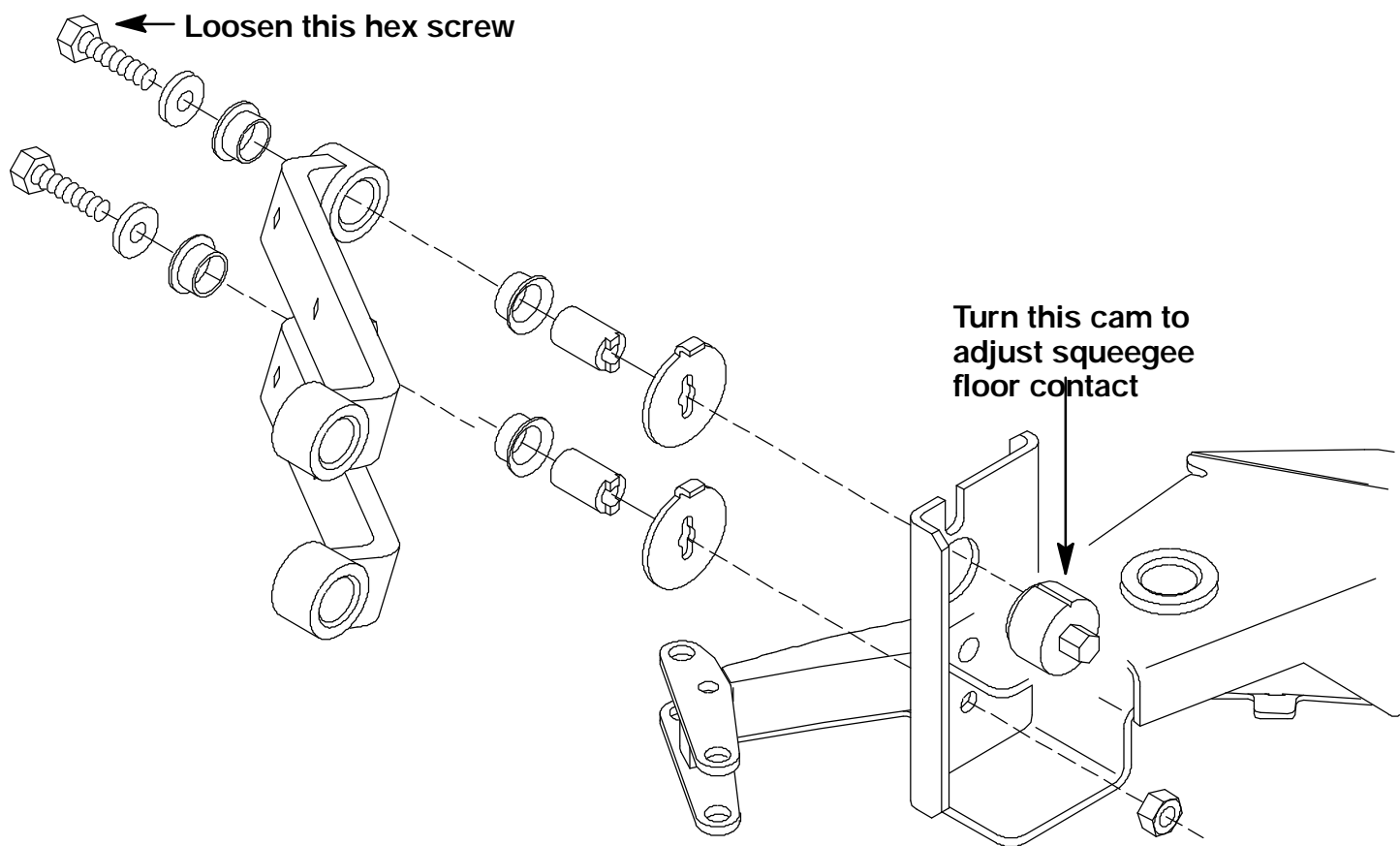


FIG. 3 - Rear Squeegee Adjustment Cams

BILL OF MATERIALS FOR SQUEEGEE REPLACEMENT KIT 365381

Ref.	TENNANT Part No.	Description	Qty.
1	365322	Squeegee blade, front, 5 slot linatex	1
2	365323	Squeegee blade, rear, linatex	1

BILL OF MATERIALS FOR SQUEEGEE REPLACEMENT KIT 365382

Ref.	TENNANT Part No.	Description	Qty.
1	365324	Squeegee, front, 1 slot linatex	1
2	365323	Squeegee blade, rear, linatex	1

BILL OF MATERIALS FOR SQUEEGEE REPLACEMENT KIT 365383

Ref.	TENNANT Part No.	Description	Qty.
1	365325	Squeegee blade, front, 5 slot urethane	1
2	365326	Squeegee blade, rear, urethane	1

BILL OF MATERIALS FOR SQUEEGEE REPLACEMENT KIT 365384

Ref.	TENNANT Part No.	Description	Qty.
1	365380	Squeegee blade, front, 1 slot urethane	1
2	365326	Squeegee blade, rear, urethane	1

AVAILABLE URETHANE SIDE SQUEEGEES

TENNANT Part No.	Description
365394	Max Pro 1000 (two brush head) Squeegee blade, side, left or right
365395	Max Pro 1200 (three brush head) Squeegee blade, side, right
365396	Squeegee blade, side, left

TENNANT COMPANY
P. O. Box 1452
Minneapolis, MN 55440-1452