



# INSTRUCTION BULLETIN

No. 340251  
Machine: 6100/6100E  
Published: 10-2005  
Rev: 01

**NOTE: DO NOT DISCARD the Parts List from the Instruction Bulletin. Place the Parts List in the appropriate place in the machine manual for future reference. Retaining the Parts List will make it easier to reorder individual parts and will save the cost of ordering an entire kit.**

*NOTE: Numbers in parenthesis ( ) are reference numbers for parts listed in Bill of Materials.*

Installation instructions for kit numbers 83389 & 374348

## SYNOPSIS:

This kit contains the parts needed to install a backup alarm/flashing light kit on 6100/6100E sweepers. Please follow step-by-step instructions.

## SPECIAL TOOLS / CONSIDERATIONS: None

(Estimated time to complete: 2 hours)

## PREPARATION: BOTH KITS

1. Park the machine on a clean level surface.
2. Turn off the machine, remove the key, and set the parking brake.

**FOR SAFETY: Before leaving or servicing machine, stop on level surface, set parking brake, turn off machine, and remove key.**

3. Disconnect battery cables from batteries.



**WARNING: Always disconnect battery cables from machine before working on electrical components.**

## INSTALLATION: 83389

1. Remove the debris hopper. Lower and remove the filter to access the mounting holes for pedestal (6).
2. Use screws (8) and hex nuts (9) to mount the pedestal (6) to rear left corner of the machine. Refer to Fig. 1.
3. Insert the grommet (2) into the hole in the pedestal (6). Refer to Fig. 1.
4. Carefully guide wires from the warning light (1) and backup alarm (12) down through grommet (2) in the pedestal (6).
5. Use hardware from the warning light (1) to mount the warning light onto the pedestal. Refer to Fig. 1.
6. Use two hex screws (8), two flat washers (20), and two hex nuts to mount the backup alarm (12) onto the pedestal (6). Refer to Fig. 1.
7. Connect the wires from the warning light (1) and from the backup alarm (10) to the warning/backup harness (10) and attach the warning/backup harness to the main wire harness. Refer to Fig. 1, Fig. 2, Fig. 3, and Fig. 4.
8. Insert the warning/backup harness (10) into the duct (11) and stick the duct to the pedestal (6). Refer to Fig. 1.
9. Use four screws (8), four washers (5), and four hex nuts (9) to mount the light guard (10) onto the pedestal (4). Refer to Fig. 1.
10. Open circuit breaker panel. Install circuit breaker (3) and circuit breaker boot (4) into the circuit breaker panel. Refer to Fig. 1.
11. Connect the main wire harness to the circuit breaker (3). Refer to Fig. 1.
12. Remove plug from warning light switch position in control panel. Install rocker switch (5) in control panel. Refer to Fig. 1.
13. Connect the main wire harness to the rocker switch (5). Refer to Fig. 1 and Fig. 4.
14. Close the circuit breaker panel.
15. Use hex screws (14) and lock washers (15) to attach the roller switch assembly (17) to the switch mounting bracket (16). Refer to Fig. 1 and Fig 5.

16. Remove propel pedal mounting hardware.
17. Use switch mounting bracket (16) to mount the roller switch (17) to the propel pedal. Refer to Fig. 1 and Fig. 6.
18. Connect the main wire harness to the roller switch (17). Refer to Fig. 1, Fig. 2, Fig. 3, and Fig. 4.
19. Reinstall propel pedal onto the machine.
20. Remove the left side panel. Refer to Fig. 1.
21. Use a hex screw (14) and lock washer (15) to install the relay (13). Refer to Fig. 1.
22. Reinstall the left side panel.
23. Reconnect the battery cables to the batteries.
24. Start machine. Check warning light and backup alarm for proper operation.

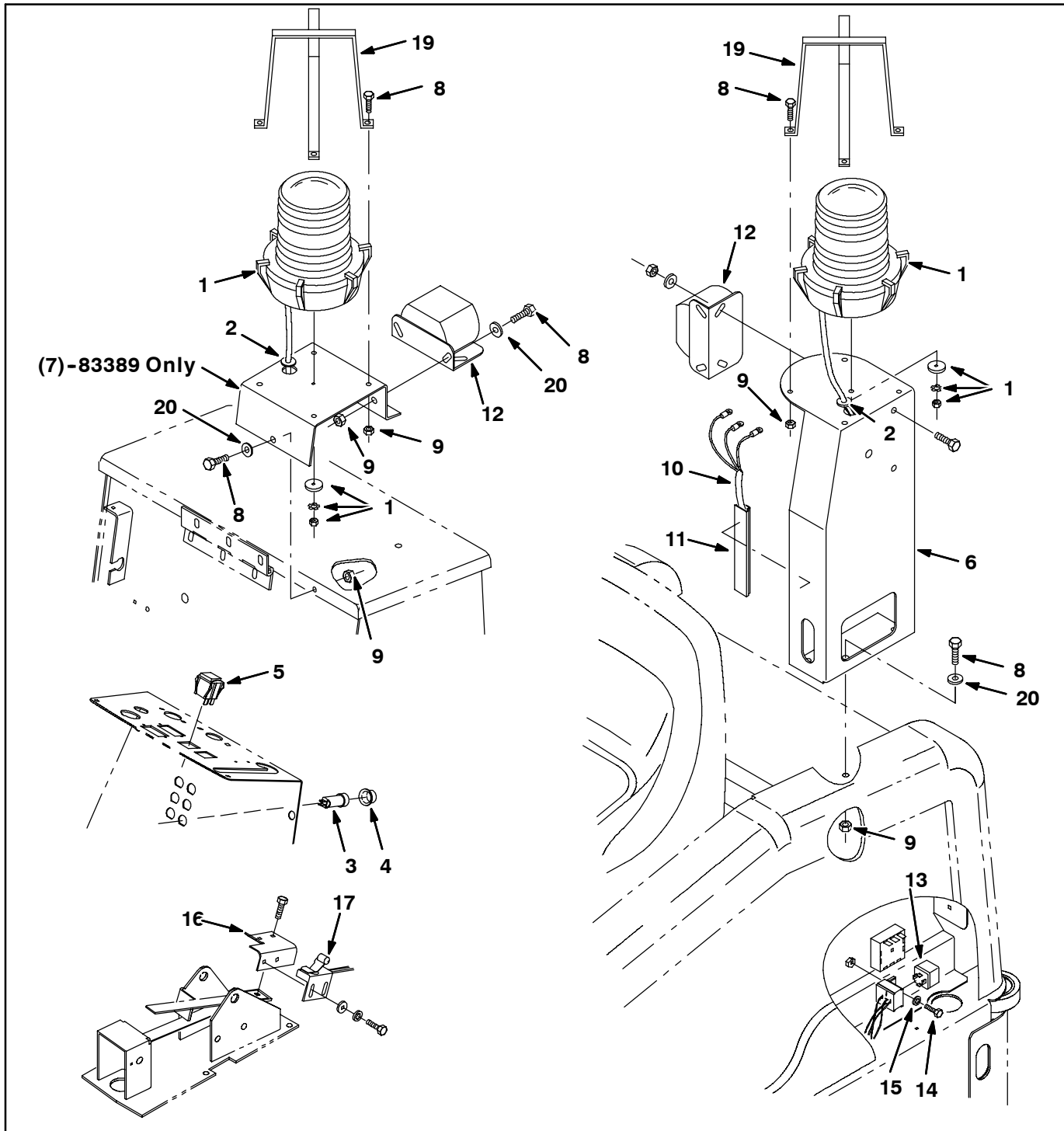


FIG. 1

## INSTALLATION: 374348

*NOTE: If machine is not equipped with the optional vacuum wand, use previous instructions to mount warning light/backup alarm to the pedestal.*

1. Insert grommet (2) into the hole in the mounting bracket (7). Refer to Fig. 1.
2. Carefully guide the wires from the warning light (1) and backup alarm (12) through the grommet (2) in the mounting bracket and mount the warning light and backup alarm to the mounting bracket. Refer to Fig. 1.
3. Use hex screws (8) and hex nuts (9) to mount the bracket (7) to left corner of vacuum box assembly. Refer to Fig. 1.
4. Connect the warning light/backup alarm wire harness (10) to main wire harness. Refer to Fig. 1, Fig. 2, and Fig. 3.
5. Open circuit breaker panel. Install circuit breaker (3) and circuit breaker boot (4) into the circuit breaker panel. Refer to Fig. 1.
6. Connect the main wire harness to the circuit breaker (3). Refer to Fig. 1.
7. Connect the warning light/backup alarm wire harness (10) to main wire harness. Refer to Fig. 1, Fig. 2, and Fig. 3.
8. Remove plug from warning light switch position. Install the rocker switch (5) into the control panel. Refer to Fig. 1.
9. Plug the main wire harness into the rocker switch (5). Refer to Fig. 1 and Fig. 3.
10. Use hex screws (14) and interior lock washers (15) to mount the roller switch assembly (17) onto switch mounting bracket (16). Refer to Fig. 1 and Fig. 5.
11. Remove the propel pedal mounting hardware from machine. Set hardware aside.
12. Turn the propel pedal upside down. Use the switch mounting bracket (16) to mount the roller switch (17) to propel pedal. Refer to Fig. 1 and Fig. 6.
13. Connect the main wire harness to the roller switch (17). Refer to Fig. 1 and Fig. 3.
14. Reinstall the propel pedal onto the machine.
15. Close the circuit breaker panel.
16. Reinstall the left side panel. Refer to Fig. 1.
17. Use a hex screw (14) and an interior lock washer (15) to install the relay (13). Refer to Fig. 1.
18. Connect the battery cables to the batteries.
19. Reinstall the left side panel.
20. Start machine. Check warning light and backup alarm for proper operation.

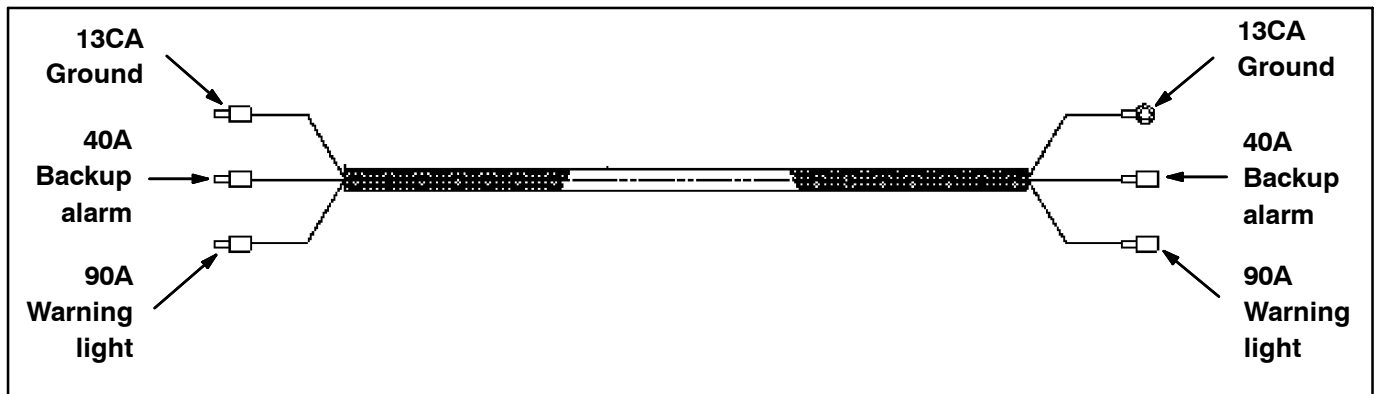


FIG. 2

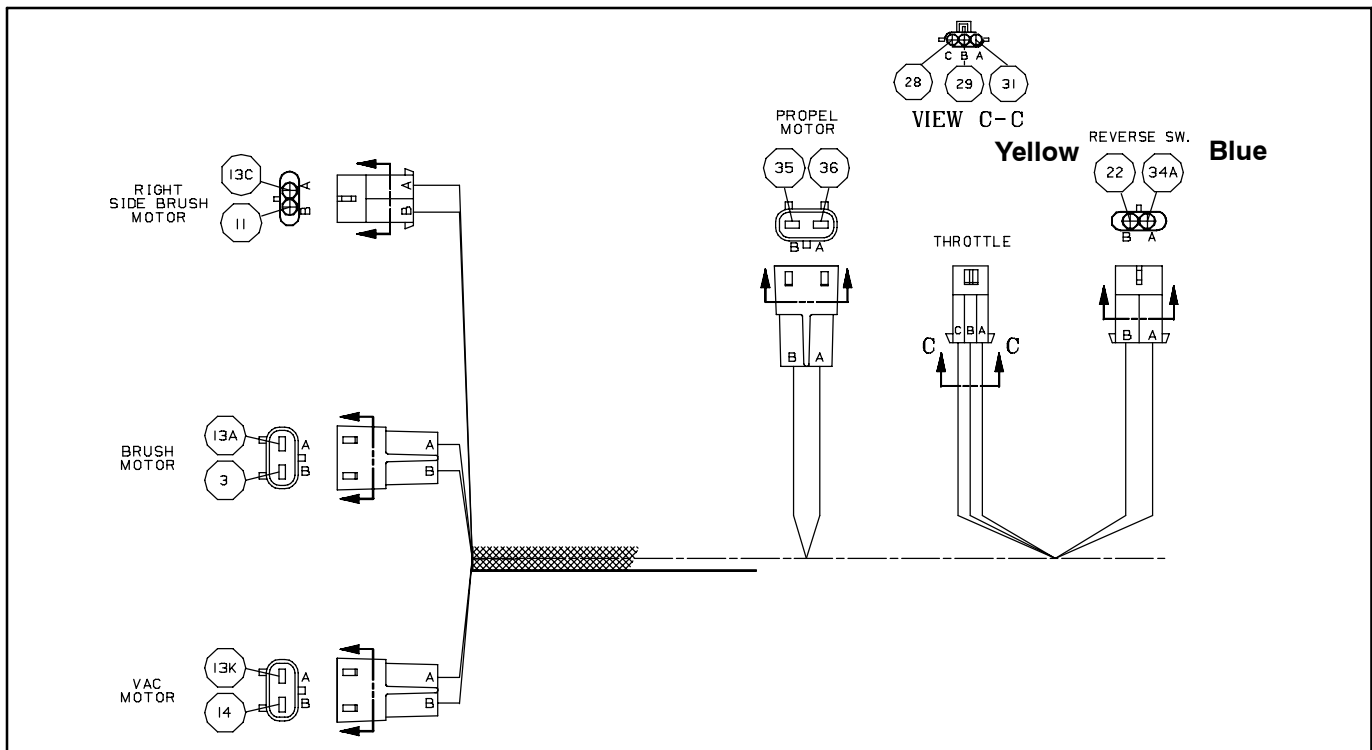


FIG. 3

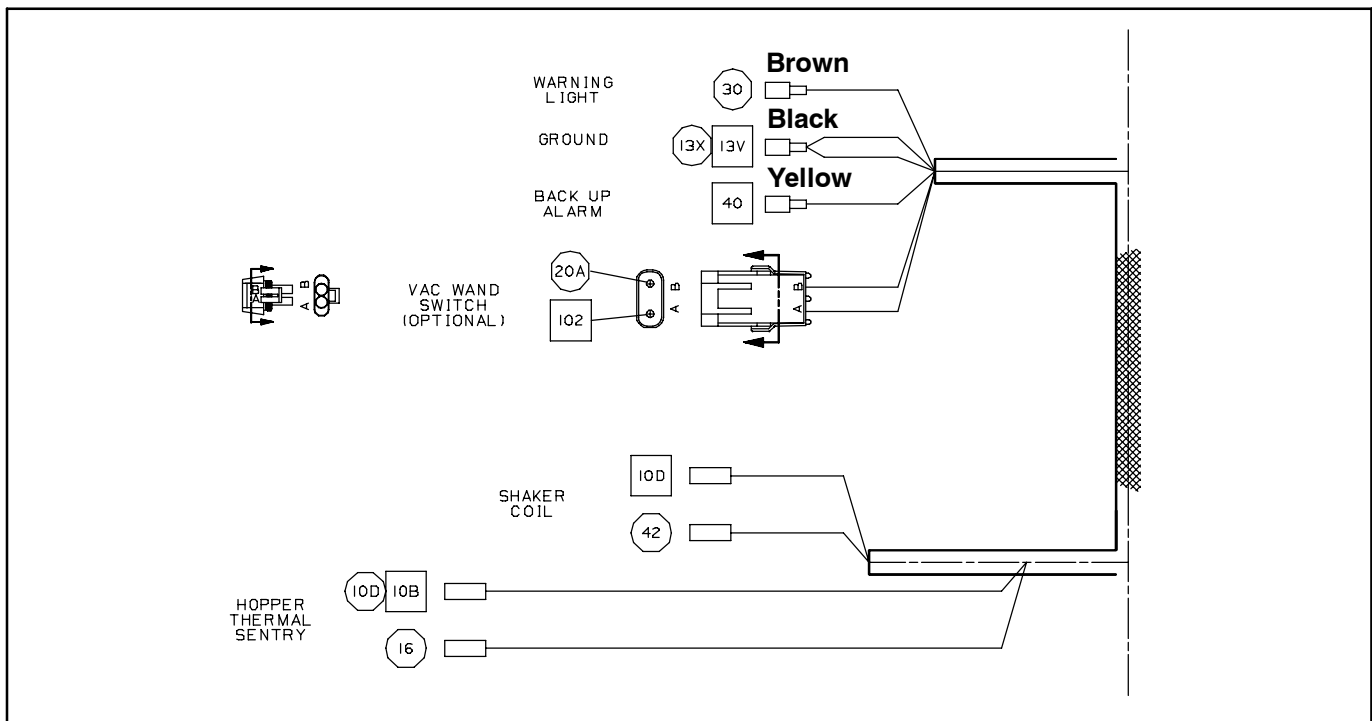


FIG. 4

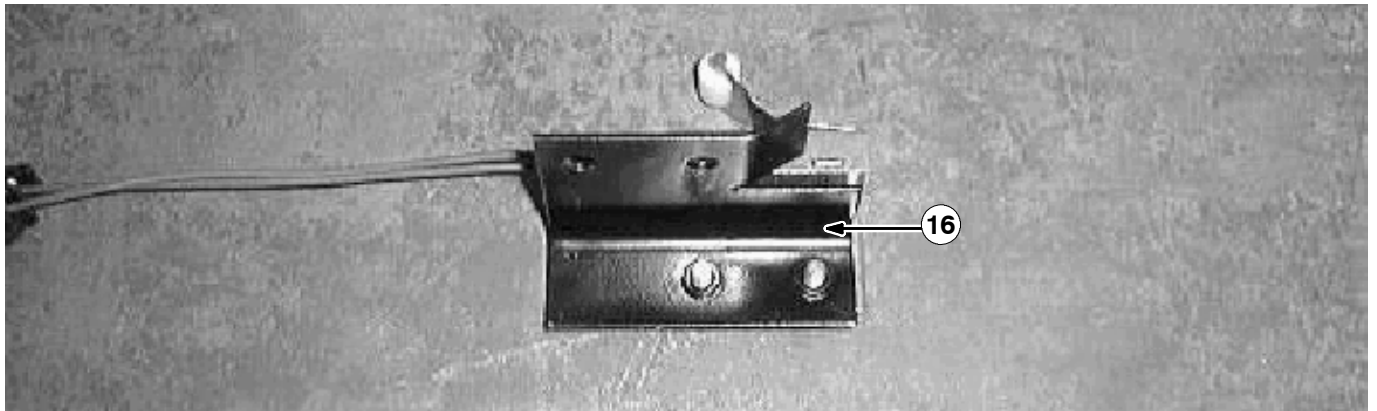
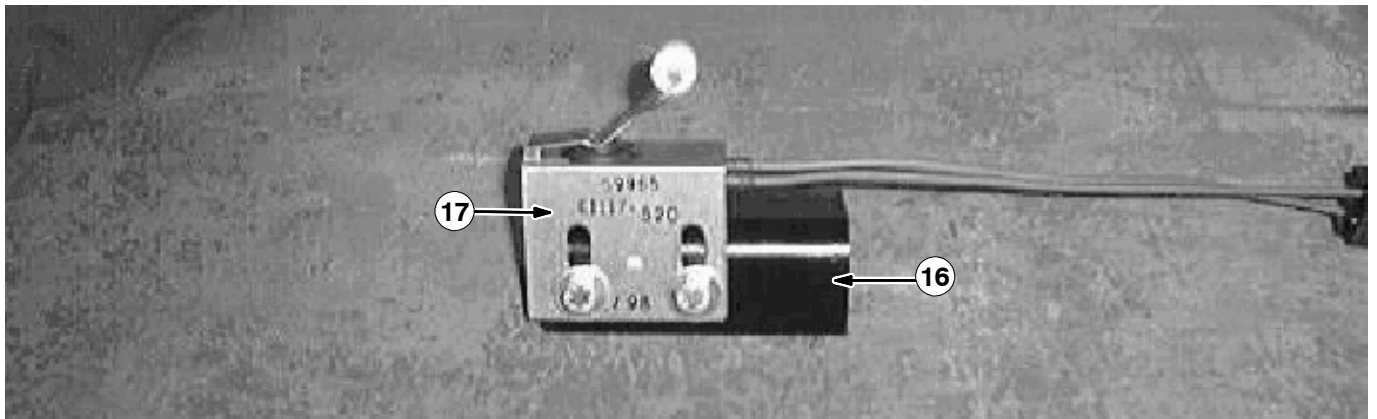


FIG. 5



FIG. 6

**Bill of Materials for Alarm Kit, Backup /A/V, CI [6100]-83389**

Ref.	Tennant Part No.	Description	Qty.
▽	83389	Alarm Kit, Backup /A/V, CI [6100]	1
▲ 1	83159	Light, Flsh, 36VDC, Amb, Rwk 60374	1
▲ 2	10632-2	Grommet, Rbr, 0.62ID F/0.9H, .12 MATL	1
▲ 3	57803	Circuitbreaker, 15.0A, Resettable	1
▲ 4	57751	Boot, Dome, .72ID .72L, Clear	1
▲ 5	360520	Switch, Rocker, 36VDC 16A SPDT On/Of/On	1
▲ 6	83530	Pedestal, Flsh Light/Alarm Backup	1
▲ 7	83531	Bracket, Flsh Light/Alarm Backup	1
▲ 8	16735	Screw, Hex, M8 X 1.25 X 16, 8.8	6
▲ 9	07791	Nut, Hex, Flng, M8 X 1.25	6
▲ 10	81946	Harness, Warning/Backup, 36VDC	1
▲ 11	72114	Duct, Vyl, 0.40 X 0.75 .25D, 06.0L	1
▲ 12	83254	Alarm Assy, Backup, 12-48VDC 82-102DBA	1
▲ 13	398526	Relay, 36VDC, 05A, SPDT N/O [Greenwich]	1
▲ 14	12312	Screw, Hex, M5 X 0.8 X 12, 8.8	3
▲ 15	32980	Washer, Lock, Int, #10	3
▲ 16	83265	Bracket, Angle, Mtg, Switch, Rlr	1
▲ 17	59965	Switch, Snap Actn, 12VDC 15A No Rlr	1
▲ 18	19066	Washer, Flat, #10	1
▲ 19	45272	Guard Wldt, Light, Revl/Flsh	1
▲ 20	39349	Washer, Flat, 0.31 SAE	4

**Bill of Materials for Alarm Kit, Backup /A/V, Ped, CI [6100]-374348**

Ref.	Tennant Part No.	Description	Qty.
▽	374348	Alarm Kit, Backup /A/V, Ped, CI [6100]	1
▲ 1	83159	Light, Flsh, 36VDC, Amb, Rwk 60374	1
▲ 2	10632-2	Grommet, Rbr, 0.62ID F/0.9H, .12 MATL	1
▲ 3	57803	Circuitbreaker, 15.0A, Resettable	1
▲ 4	57751	Boot, Dome, .72ID .72L, Clear	1
▲ 5	360520	Switch, Rocker, 36VDC 16A SPDT On/Of/On	1
▲ 6	83530	Pedestal, Flsh Light/Alarm Backup	1
▲ 7	06549	Nut, Hex, Lock, M5 X 0.8, NL	4
▲ 8	16735	Screw, Hex, M8 X 1.25 X 16, 8.8	6
▲ 9	07791	Nut, Hex, Flng, M8 X 1.25	6
▲ 10	81934	Harness, Warning/Backup, 12VDC	1
▲ 11	72114	Duct, Vyl, 0.40 X 0.75 .25D, 06.0L	1
▲ 12	83254	Alarm Assy, Backup, 12-48VDC 82-102DBA	1
▲ 13	398526	Relay, 36VDC, 05A, SPDT N/O [Greenwich]	1
▲ 14	12312	Screw, Hex, M5 X 0.8 X 12, 8.8	3
▲ 15	32980	Washer, Lock, Int, #10	3
▲ 16	83265	Bracket, Angle, Mtg, Switch, Rlr	1
▲ 17	59965	Switch, Snap Actn, 12VDC 15A No Rlr	1
▲ 18	19066	Washer, Flat, #10	1
▲ 19	45272	Guard Wldt, Light, Revl/Flsh	1
▲ 20	39349	Washer, Flat, 0.31 SAE	4
▲ 21	09145	Screw, Pan, M6 X 1.0 X 16, 4.8	1
▲ 22	08708	Nut, Hex, Lock, M6 X 1.0, NL	1
▲ 23	09252	Screw, Hex, M5 X 0.8 X 20, 8.8	4

TENNANT COMPANY  
 P. O. Box 1452  
 Minneapolis, MN 55440-1452