



# INSTRUCTION BULLETIN

No. 340213  
Machine: 6100  
Published: 3-99/00  
System: SWEEPING

**NOTE: DO NOT DISCARD the Parts List from the Instruction Bulletin. Place the Parts List in the appropriate place in your machine manual for future reference. Retaining the Parts List will make it easier to reorder individual parts and will save you the cost of ordering an entire kit.**

*NOTE: Numbers in parenthesis ( ) are reference numbers for parts listed in Bill of Materials.*

Installation instructions for kit number 81522

## **SYNOPSIS / PROBLEM:**

This kit contains the parts needed to replace the hopper kit on the model 6100 sweeper. Please follow step-by-step instructions.

## **SPECIAL TOOLS / CONSIDERATIONS: NONE**

(Estimated time to complete: 1 hour)

## **PREPARATION:**

(Refer to FIG. 1, 2 and 3)

**FOR SAFETY: Before leaving or servicing machine, stop on level surface and set parking brake. Then turn off machine and remove key.**

1. Disconnect battery cables from machine.



**WARNING: Always disconnect battery cables from machine before working on electrical components.**

## **HOPPER AND FILTER TRAY ASSEMBLY REMOVAL:**

(Refer to FIG. 1, and 2)

1. Remove old hopper from the machine.
2. Remove hopper handle and four mounting hex bolts and washers. (Refer to FIG. 1)
3. Remove hopper wheels, hex bolts, washers, and axle tubes from the hopper and set aside. (Refer to FIG. 1)
4. Discard old hopper.
5. Open filter panel tray and disconnect electrical connections from the shaker solenoid harness.
6. Remove filter panel and the shaker from the machine and set aside.
7. Remove the filter panel tray weldment, mounting clevis and cotter pins from the machine. Set clevis pins and cotter pins aside. (Refer to FIG. 2)
8. Remove hopper latch bracket assembly from the filter panel tray weldment. Set latch bracket assembly aside. (Refer to FIG. 2)
9. Discard old filter panel tray weldment and filter louver panel. (Refer to FIG. 2)

## **NEW HOPPER AND FILTER TRAY INSTALLATION:**

**(Refer to FIG. 1, and 3)**

*NOTE: In most cases, the parts in steps one and two will be pre-assembled.*

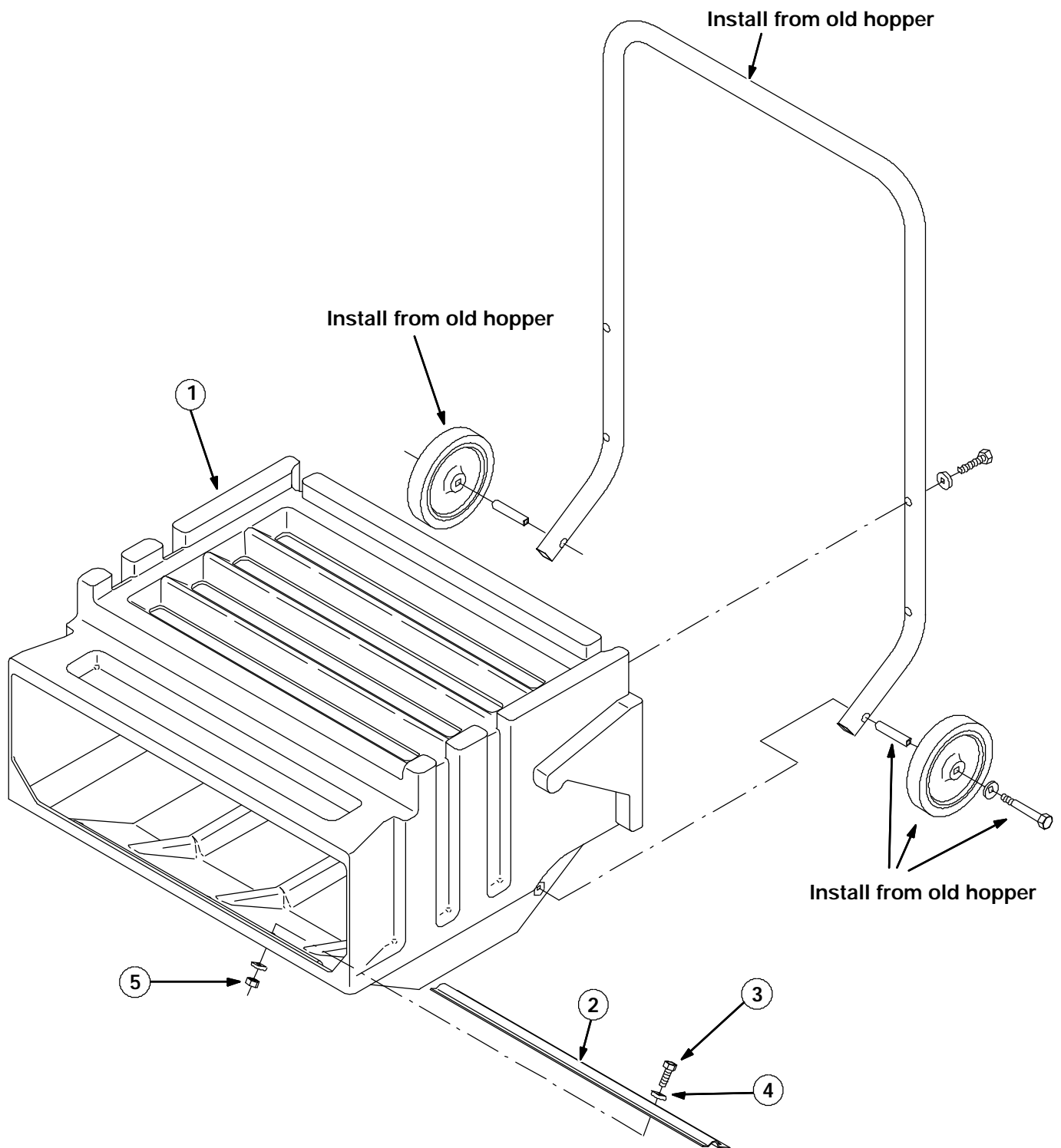
1. Mount filter panel gasket (7) to new filter panel tray weldment (6) with adhesive epoxy (10) and mixing nozzle (11). Allow to dry. (Refer to FIG. 3)
2. Mount new draw pull catches (8) to new tray weldment (6) with pop rivets (9).  
(Refer to FIG. 3)
3. Install set aside hopper latch bracket assembly on new tray weldment (6). (Refer to FIG. 3)

*NOTE: Note orientation of bolt in fig. 3 before assembling.*

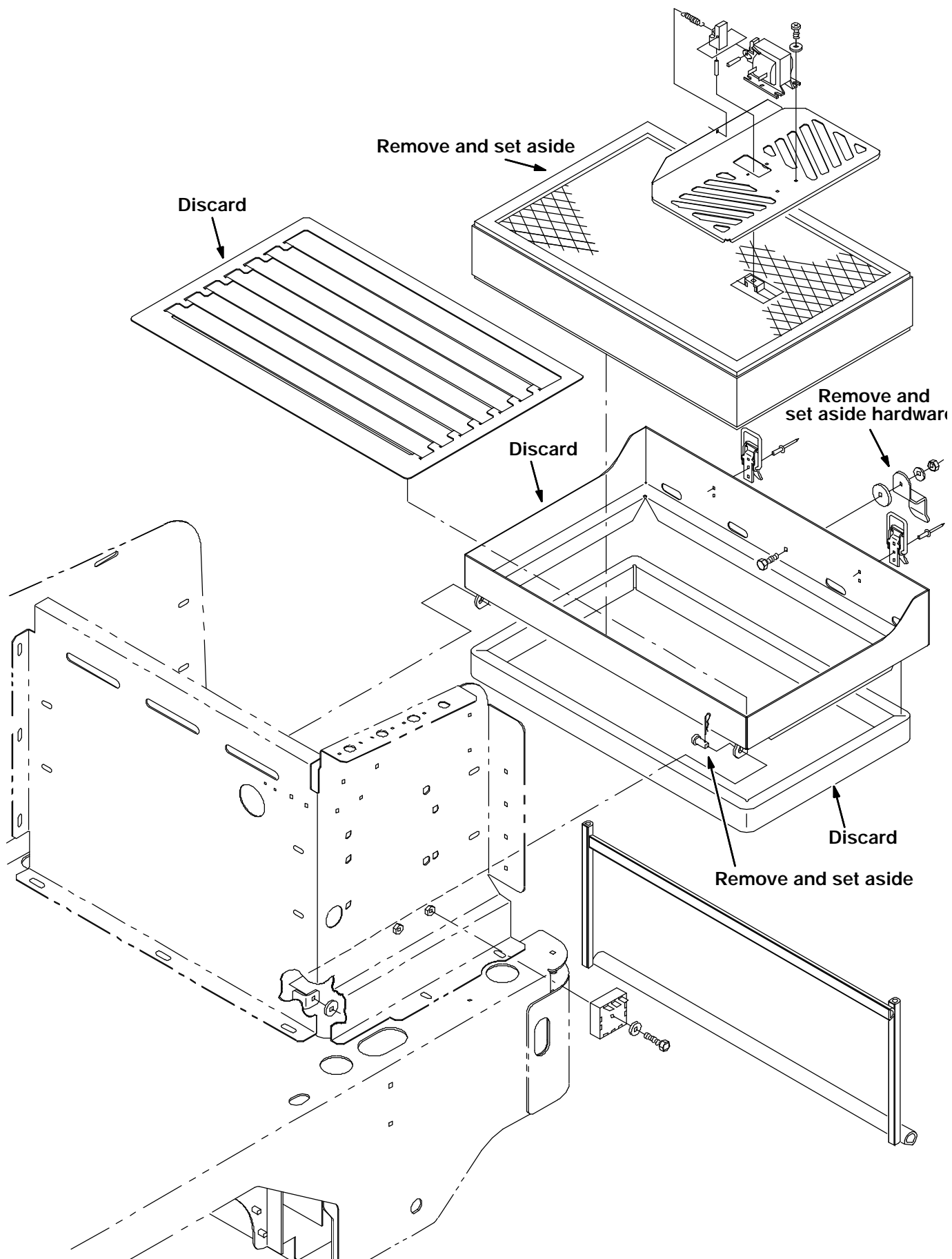
4. Mount the new tray weldment (6) in the machine with set aside clevis and cotter pins.  
(Refer to FIG. 3)
5. Install the new perma-filter louver panel (12) in the new tray weldment (6). Check that the louvers are directed towards the rear of the machine. (Refer to FIG. 3)
6. Install the set aside panel filter and shaker assembly in the new tray weldment (6).  
(Refer to FIG. 3)
7. Connect the wire harness to the shaker solenoid harness.

*NOTE: The orientation of the wire connections is not critical for operation.*

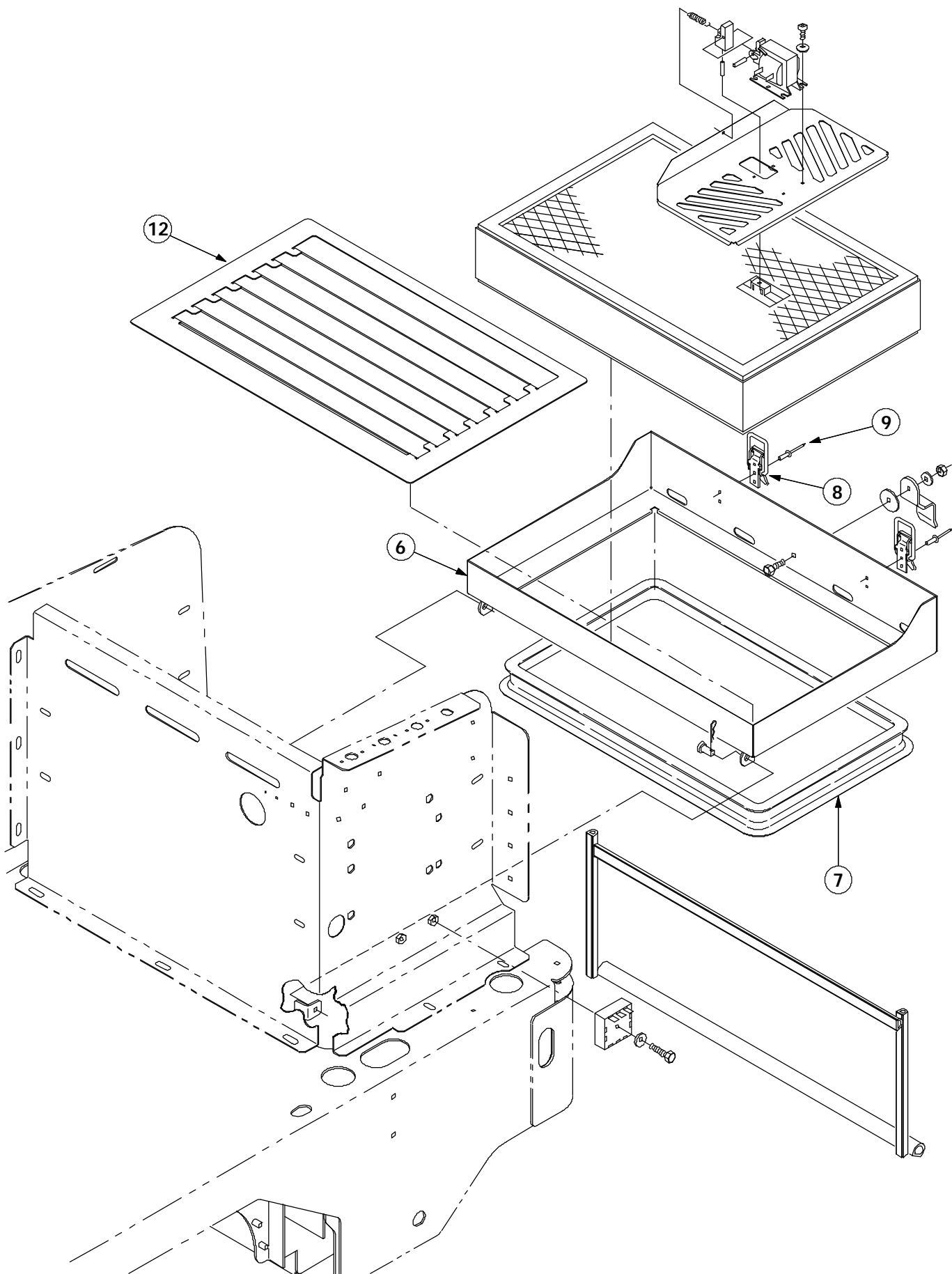
8. Close and secure new tray weldment assembly.
9. Mount the set aside hopper hardware on new hopper (1). (Refer to FIG. 1)
10. Mount the new hopper lip bracket (2) onto the new hopper with screws (3), washers (4) and hex nuts (5). (Refer to FIG. 1)
11. Install new hopper in machine.
12. Start machine and check for proper filter shaker operation.



**FIG. 1 - HOPPER HARDWARE INSTALLATION**



**FIG. 2 - FILTER PANEL ASSEMBLY REMOVAL**



**FIG. 3 - NEW FILTER PANEL ASSEMBLY INSTALLATION**

**BILL OF MATERIALS FOR HOPPER KIT 81522**

<b>Ref.</b>	<b>TENNANT Part No.</b>	<b>Description</b>	<b>Qty.</b>
1	83447	Hopper, rear	1
2	81868	Bracket, lip, hopper	1
3	08716	Screw, hexssm 6 X 1.0	5
4	32490	Washer, flt	10
5	08708	Nut, hxlocnyln 6 X 1.0	5
6	83439	Panel, wldt, filter	1
7	83426	Gasket, filter panel	1
8	23709	Catch, draw pull	2
9	41732	Rivet, pop	4
10	81521	Adhesive, epoxy	1
11	81520	Nozzle, mixing	1
12	83427	Panel, perma-filter	1

TENNANT COMPANY  
P. O. Box 1452  
Minneapolis, MN 55440-1452