



# INSTRUCTION BULLETIN

No. 340212  
Machine: 6080/3640  
Published: 9-99/01  
System: ENGINE

**NOTE: DO NOT DISCARD the Parts List from the Instruction Bulletin. Place the Parts List in the appropriate place in your machine manual for future reference. Retaining the Parts List will make it easier to reorder individual parts and will save you the cost of ordering an entire kit.**

*NOTE: Numbers in parenthesis ( ) are reference numbers for parts listed in Bill of Materials.*

Installation instructions for kit number 379220

## **SYNOPSIS / PROBLEM:**

This kit contains the parts needed to replace the engine cover hinge on the model 6080 and 3640 sweepers.

Please follow step-by-step instructions.

## **SPECIAL TOOLS / CONSIDERATIONS: Hand drill, .25 inch drill bit**

(Estimated time to complete: 1 hour)

## **PREPARATION:**

(Refer to FIG. 1 thru 6)

**FOR SAFETY: Before leaving or servicing machine, stop on level surface and set parking brake. Then turn off machine and remove key.**

1. Open the machine hood.
2. Disconnect battery cables from machine.
3. Open the filter compartment and remove vacuum wand, vacuum bag or filter and shaker.



**WARNING: Always disconnect battery cables from machine before working on electrical components.**

## **INSTALLATION:**

(Refer to FIG. 1 thru 6)

1. Record all instrument panel wire connection locations, and disconnect all wires from the instrument panel group. (Refer to FIG. 4 and 6)
2. Disconnect the prop rod from the prop rod bracket. (Refer to FIG. 1)
3. Remove the snap on bearing from the right end of the hinge pin. (Refer to FIG. 1)
4. Remove the right side hinge pivot from the machine and slide it off the hinge pin. (Refer to FIG. 1)

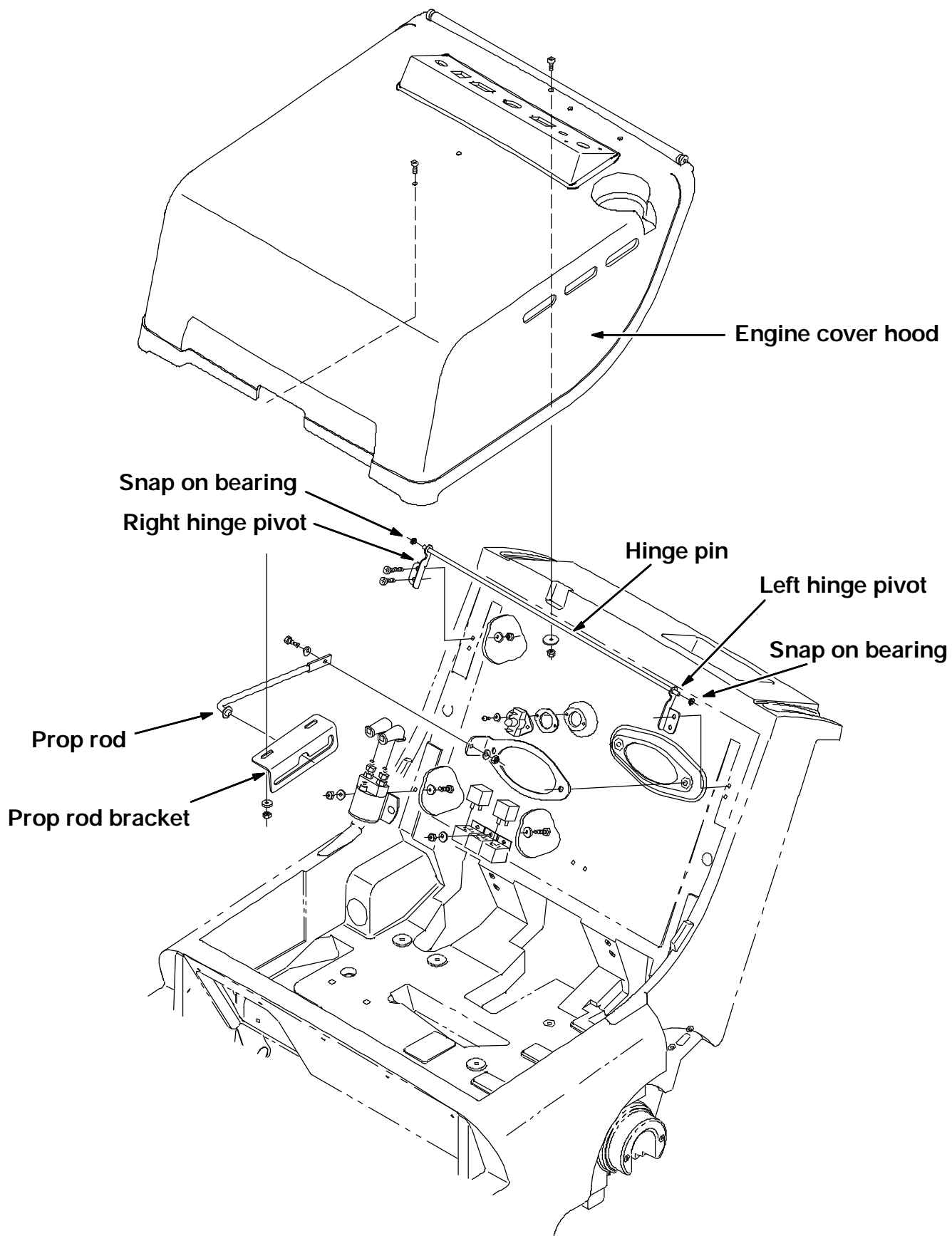
*NOTE: For gas machines, leave the hinge pivot attached to the choke cable.*

5. Remove the left side hinge pivot from the machine and lift the engine cover off the machine. (Refer to FIG. 1)
6. Remove the left side snap on bearing, hinge pivot and hinge pin from the engine cover. (Refer to FIG. 1)

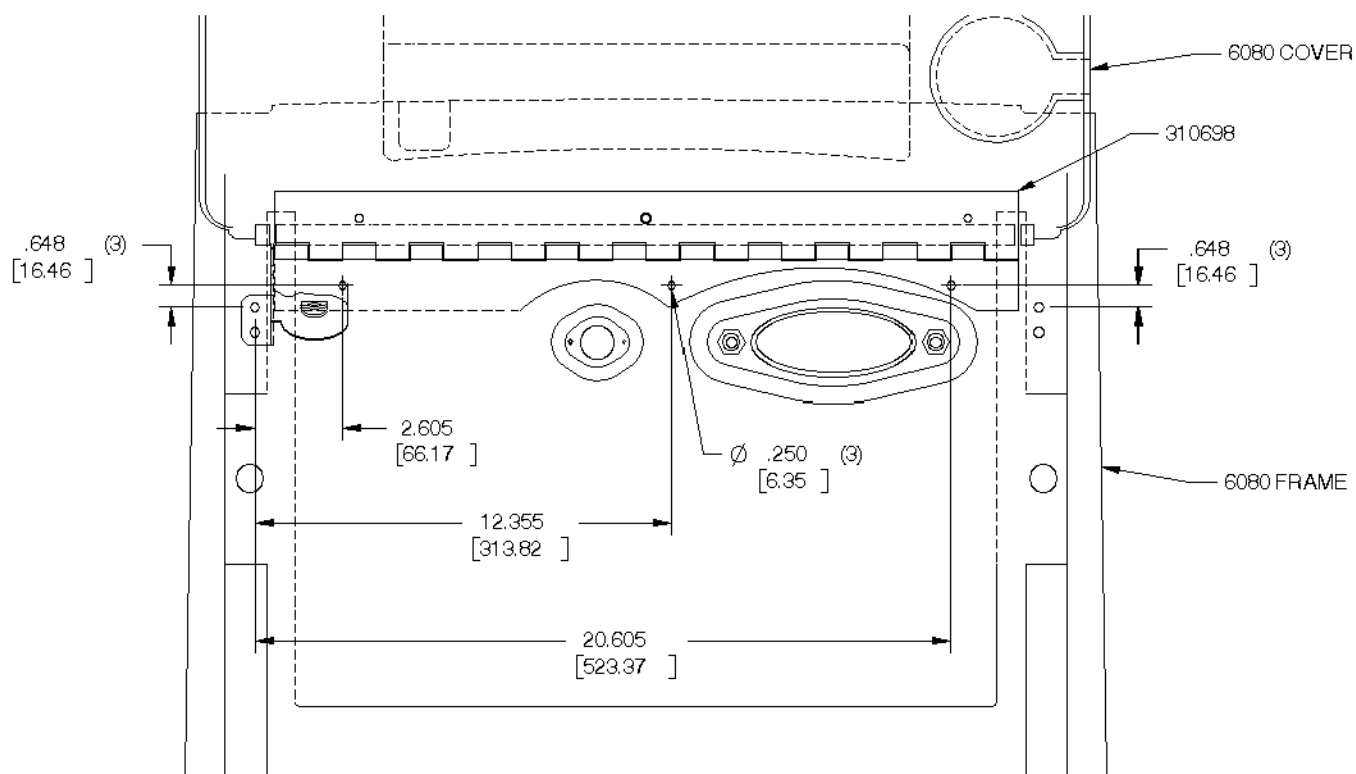
7. Position the new hinge (1) against the frame according to the mounting dimensions in fig. 2. (Refer to FIG. 2)
8. Using the hinge (1) as a template, mark and drill three .25 inch holes in the machine frame. (Refer to FIG. 2)
9. Mount the flat edge of the hinge (1) to the inside of the engine cover using a screw (2), reworked washer (5), and nut (4) through the middle hole of the hinge (1) and the pre-existing hole in the hood of the machine. (Refer to FIG. 3)

*NOTE: When mounting hinge, note hinge direction and proper washer placement in fig. 3,4 and 5 so the hinge is mounted facing the proper direction.*

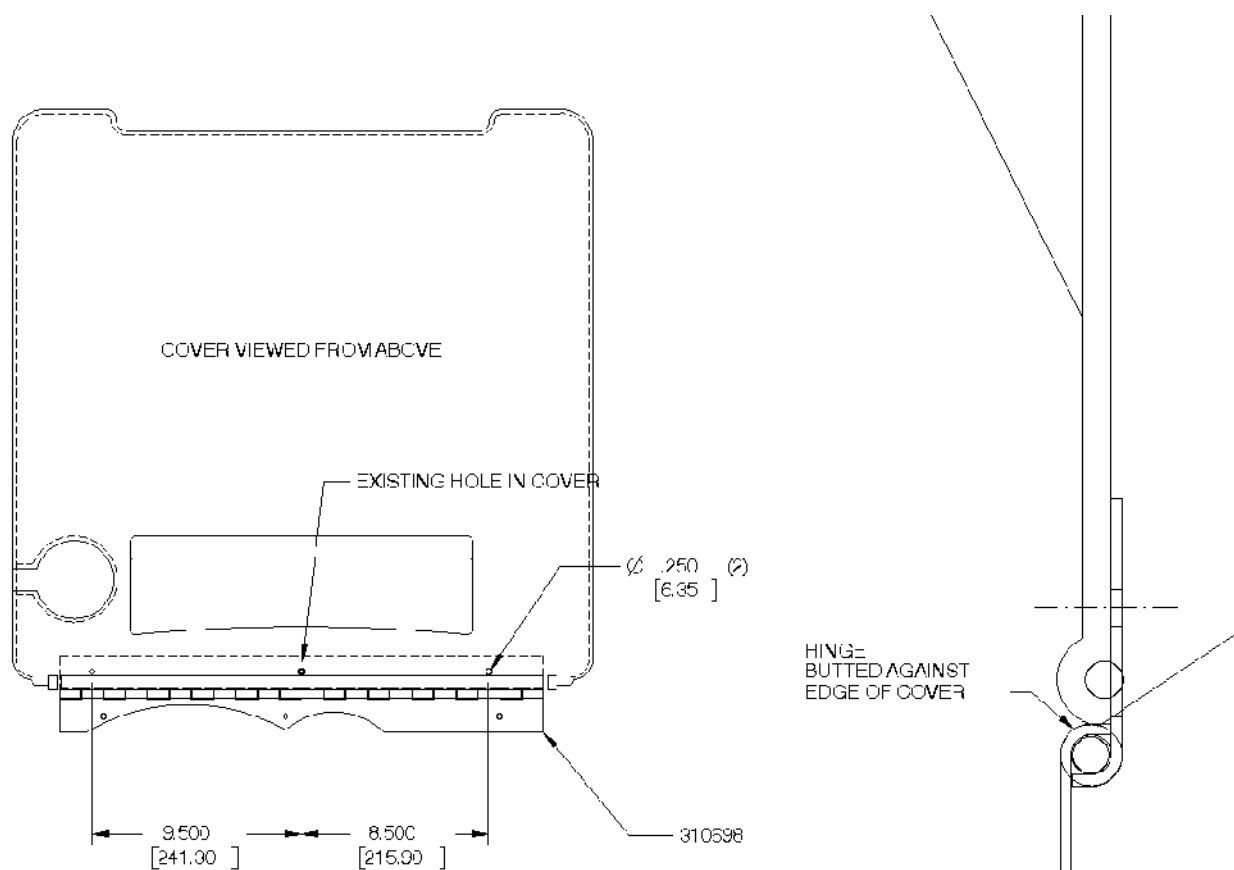
10. Using the hinge (1) as a template, mark and drill two .25 inch holes in engine cover hood. (Refer to FIG. 3)
11. Loosely mount engine cover hood to hinge (1) with two more screws (2), reworked washers (5), and nuts (4). (Refer to FIG. 3)
12. Loosely mount engine cover hood to machine with new hinge (1), screws (2), round washers (3), and nuts (4). (Refer to FIG. 2,4 and 5)
13. Tighten all mounting hardware after all pieces are installed.
14. Replace rear compartment wand, vacuum bag or filter and shaker.
15. Connect prop rod to prop rod bracket to hold engine cover hood in place. (Refer to FIG. 1 and 4)
16. Reinstall right side hinge pivot / choke bracket on gas machines. (Refer to FIG. 4 and 5)
17. Connect all instrument panel wires to proper connections. (Refer to FIG. 4 and 6)
18. Connect battery cables to machine.
19. Start machine, and check for proper operation.



**FIG. 1 6080/3640 ENGINE/BATTERY COVER GROUP**



**FIG. 2 6080/3640 COVER HINGE MOUNTING DIMENSIONS**



**FIG. 3 6080/3640 COVER HINGE MOUNTING DIMENSIONS**

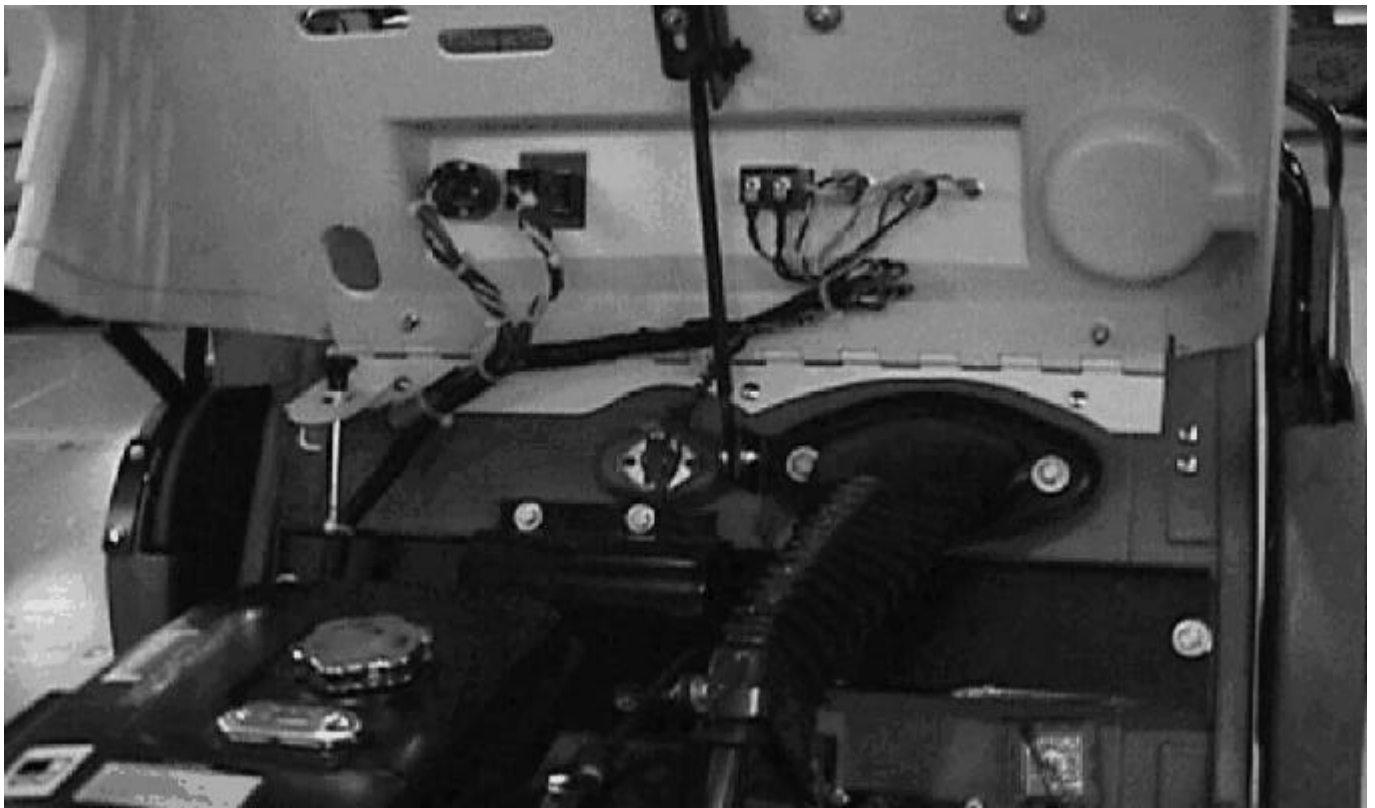
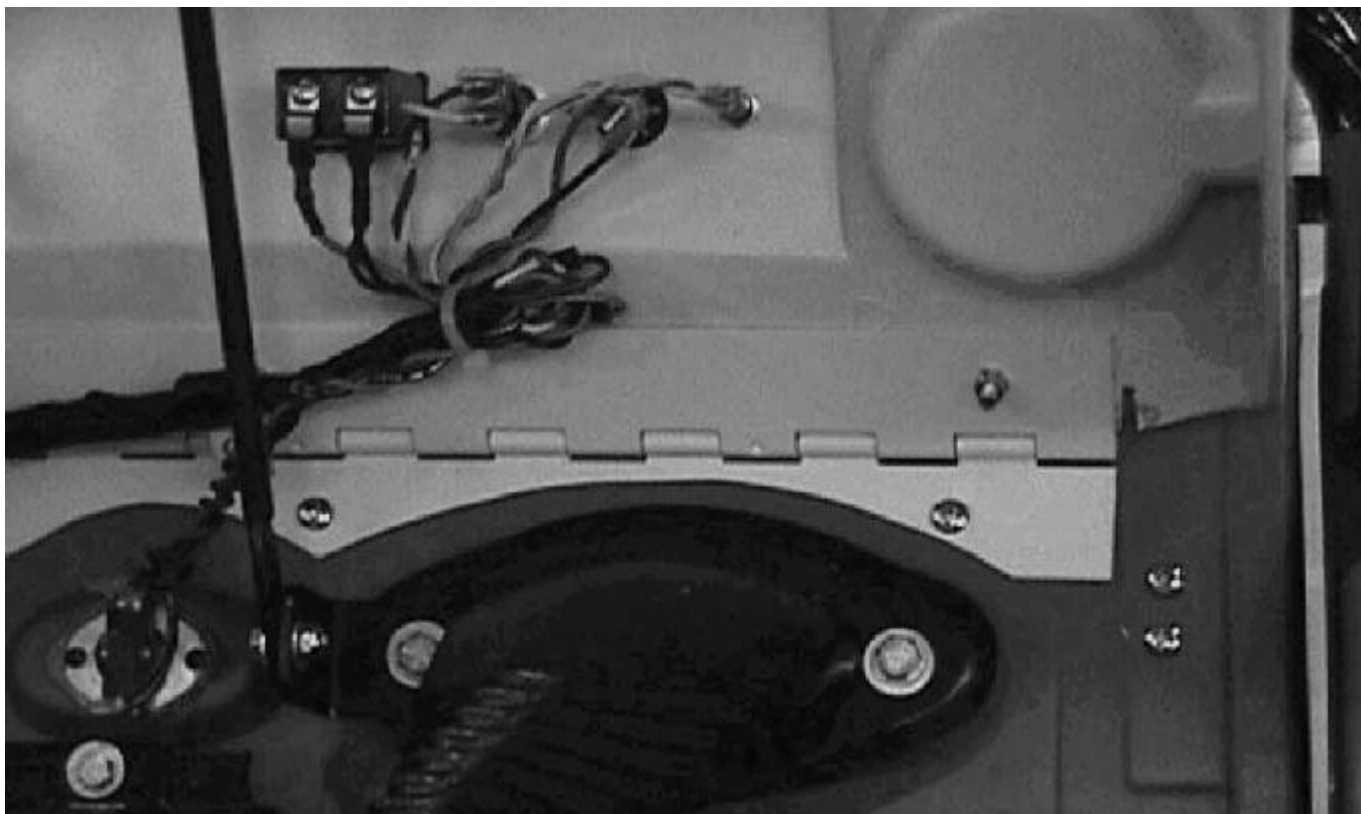


FIG. 4 - ENGINE COVER GROUP



FIG. 5 - FINAL HINGE INSTALLATION (CHOKE W/ GAS MODELS)



**FIG. 6 - HINGE AND INST. PANEL WIRING INSTALLATION**

**BILL OF MATERIALS FOR HINGE REPAIR KIT 379220**

<b>Ref.</b>	<b>TENNANT Part No.</b>	<b>Description</b>	<b>Qty.</b>
1	379221	Hinge, cover	1
2	363503	Screw, M6	6
3	32483	Washer, flat	3
4	08708	Nut, hex M6	6
5	379219	Washer, flat, rework	3

TENNANT COMPANY  
P. O. Box 1452  
Minneapolis, MN 55440-1452