



INSTRUCTION BULLETIN

No. 340196
Machine: 8010 515 515SS
MaxPro 1000
Published: 8-98/01
System: ELECTRICAL

NOTE: DO NOT DISCARD the Parts List from the Instruction Bulletin. Place the Parts List in the appropriate place in your machine manual for future reference. Retaining the Parts List will make it easier to reorder individual parts and will save you the cost of ordering an entire kit.

NOTE: Numbers in parenthesis () are reference numbers for parts listed in Bill of Materials.

Installation instructions for kit number 370176

SYNOPSIS / PROBLEM:

This kit contains the parts needed to replace the electrical controller on the model 8010/515/515SS sweeper/scrubber (MaxPro 1000).

Please follow step-by-step instructions.

SPECIAL TOOLS / CONSIDERATIONS: Grounding strap

(Estimated time to complete: 1 hour)

INSTALLATION:

(Refer to FIG. 1)

FOR SAFETY: Before leaving or servicing machine, stop on level surface and set parking brake. Then turn off machine and remove key.

1. Open the main cover.
2. Unplug the batteries from the connector.

FOR SAFETY: Disconnect Battery Connections Before Working On Machine.

3. Remove the six screws holding the circuit board mounting plate to the front of the machines frame.
4. Carefully pull the circuit board and plate away from the front of the machine frame.
5. Put the grounding strap (3) on by placing the exposed adhesive side firmly around your wrist. Attach the copper foil end to an exposed electrical ground or unpainted hardware.
6. Carefully unplug the ribbon cable from the back of the circuit board.
7. Carefully pop the circuit board off the nine prong pins holding it to the mount plate.

NOTE: The circuit board is removed off the prong pin by pushing in on the lock tang and then pulling up on the circuit board.

8. Once the circuit board has been removed from the nine prong pins it can be removed from the machine.
9. Position the new circuit board (1) on the mount plate.
10. Line up the holes in the circuit board with the nine prong pins.

11. Gently push the circuit board down on the pins until they snaps in place.
12. Carefully plug the ribbon cable in the back of the new circuit board.
13. Position the circuit board mount plate on the front of the machine frame. Reinstall the six screws and hand tighten.
14. Reconnect battery cables and close the cover.
15. Start machine and check for proper circuit board operation.

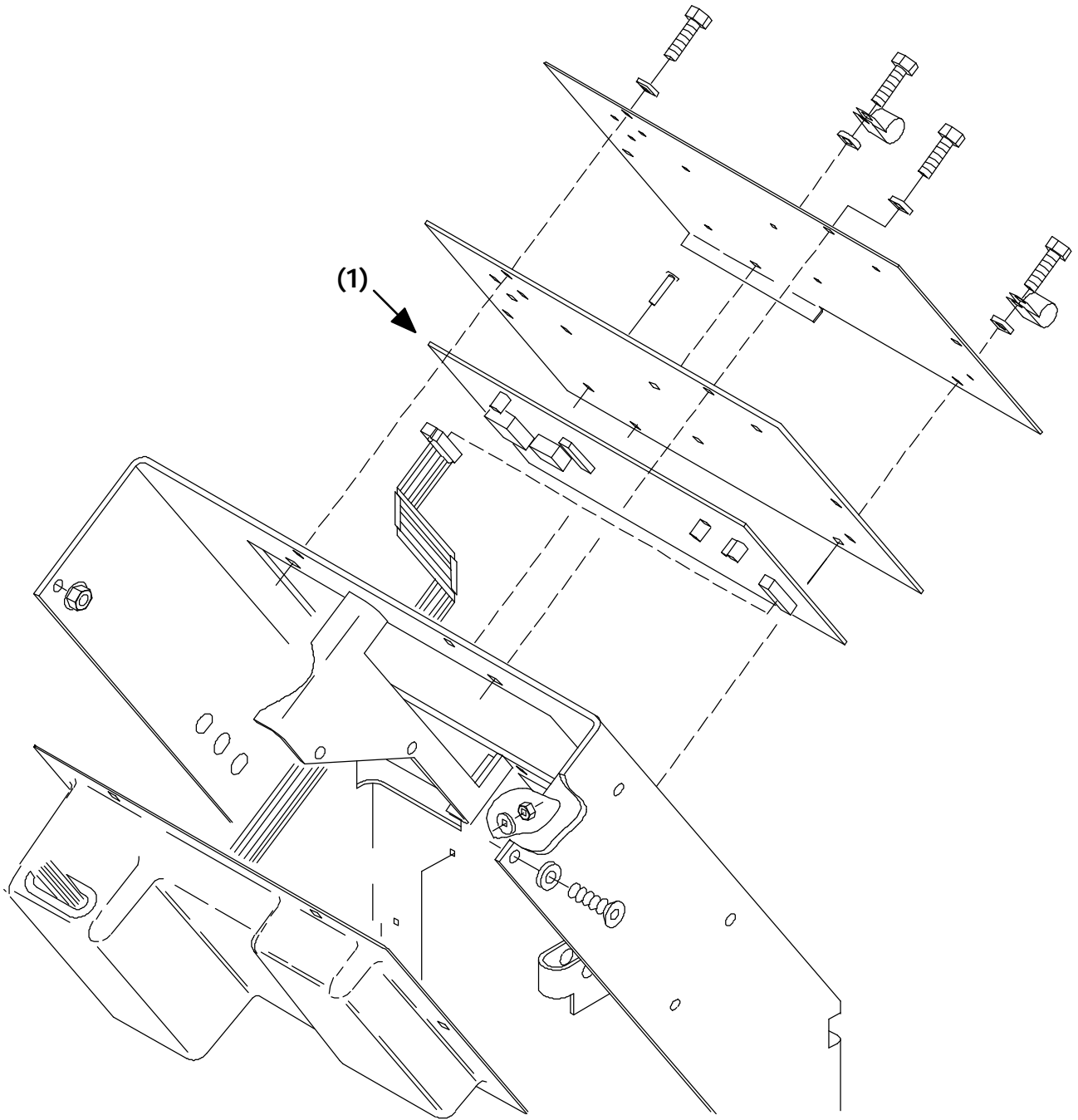


FIG. 1 - Controller Assembly

TO INITIALIZE NEW PANEL

1. Power up the machine.
2. Press and hold the "down pressure" button until desired down pressure setting is indicated.
3. Power down the machine.
4. Power up the machine while holding the "edge scrub" and the "squeegee" buttons.
5. To restore or cancel edge scrub function, press the "edge scrub" button.
6. Initialization is complete.
7. Power down the machine.

BILL OF MATERIALS FOR CONTROLLER REPLACEMENT KIT 370176

Ref.	TENNANT Part No.	Description	Qty.
1	362198	Controller	1
2	27964	Grounding strap	1

TENNANT COMPANY
P. O. Box 1452
Minneapolis, MN 55440-1452