



INSTRUCTION BULLETIN

No. 340176
Machine: 8200/8210
Published: 7-98/00
System: SCRUBBING

NOTE: DO NOT DISCARD the Parts List from the Instruction Bulletin. Place the Parts List in the appropriate place in your machine manual for future reference. Retaining the Parts List will make it easier to reorder individual parts and will save you the cost of ordering an entire kit.

NOTE: Numbers in parenthesis () are reference numbers for parts listed in Bill of Materials.

Installation instructions for kit number 365257

SYNOPSIS / PROBLEM:

This kit contains the parts needed to replace the recovery tank on the 8200/8210 model sweeper/scrubber.

Please follow step-by-step instructions.

SPECIAL TOOLS / CONSIDERATIONS: NONE

(Estimated time to complete: 2 hours)

PREPARATION:

(Refer to FIG. 1, 2 and 3)

FOR SAFETY: Before leaving or servicing machine, stop on level surface and set parking brake. Then turn off machine and remove key.

1. Shut off machine.
2. Drain recovery tank.
3. Disconnect battery cables from machine.



WARNING: Always disconnect battery cables from machine before working on electrical components.

INSTALLATION:

(Refer to FIG. 1, 2 and 3)

1. Locate scrubbing vacuum fan group on the front end of recovery tank. (Refer to FIG.1 and 2)
2. Remove scrubbing vacuum fan group and set all hardware aside. (Refer to FIG. 1 and 2)

NOTE: This is done without disconnecting the three hydraulic lines.

NOTE: Set aside all hardware carefully, it will be used on the new recovery tank.

3. Remove recovery tank group and all interior mounting hardware. Set all hardware aside. (Refer to FIG. 3 and 4)
4. Remove recovery tank from machine.
5. Remove recovery tank drain groups and set aside. Discard old recovery tank. (Refer to FIG. 5 and 6)
6. Reinstall both recovery tank drain groups in new recovery tank (1). (Refer to FIG. 5 and 6)

7. Install new stiffener bracket (4) in new recovery tank (1) with two screws (2) and washers (3) provided. (Refer to FIG. 7 and 8)
8. Mount new recovery tank (1) in machine using all set aside recovery tank group mounting hardware. (Refer to FIG. 3 and 4)
9. Remount scrubbing vacuum fan group to new recovery tank (1) using all set aside vacuum fan group hardware. (Refer to FIG. 1 and 2)
10. Connect battery cables.
11. Start machine and check new recovery tank for proper operation.

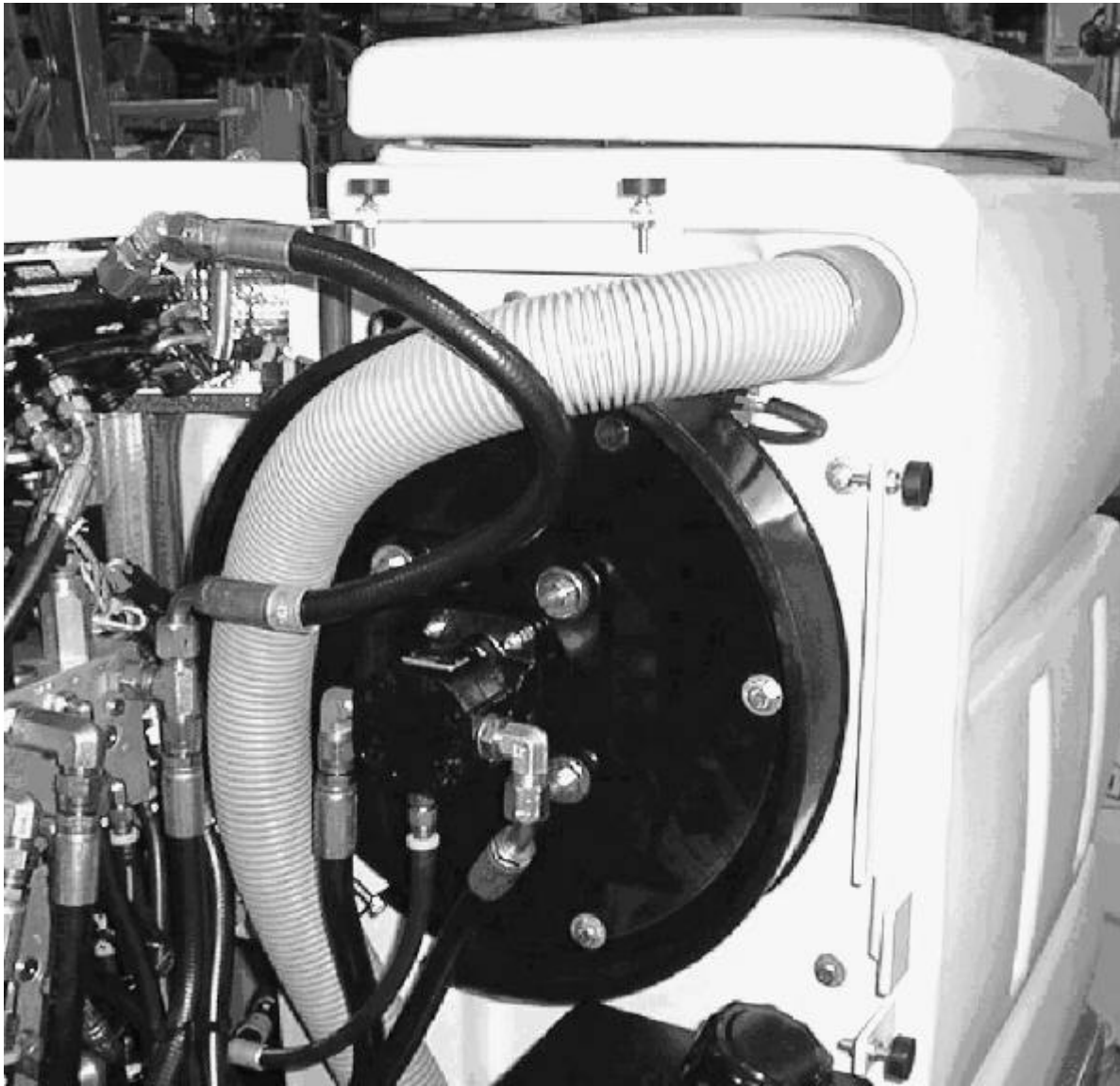


FIG. 1 Scrubbing Vacuum Fan Group

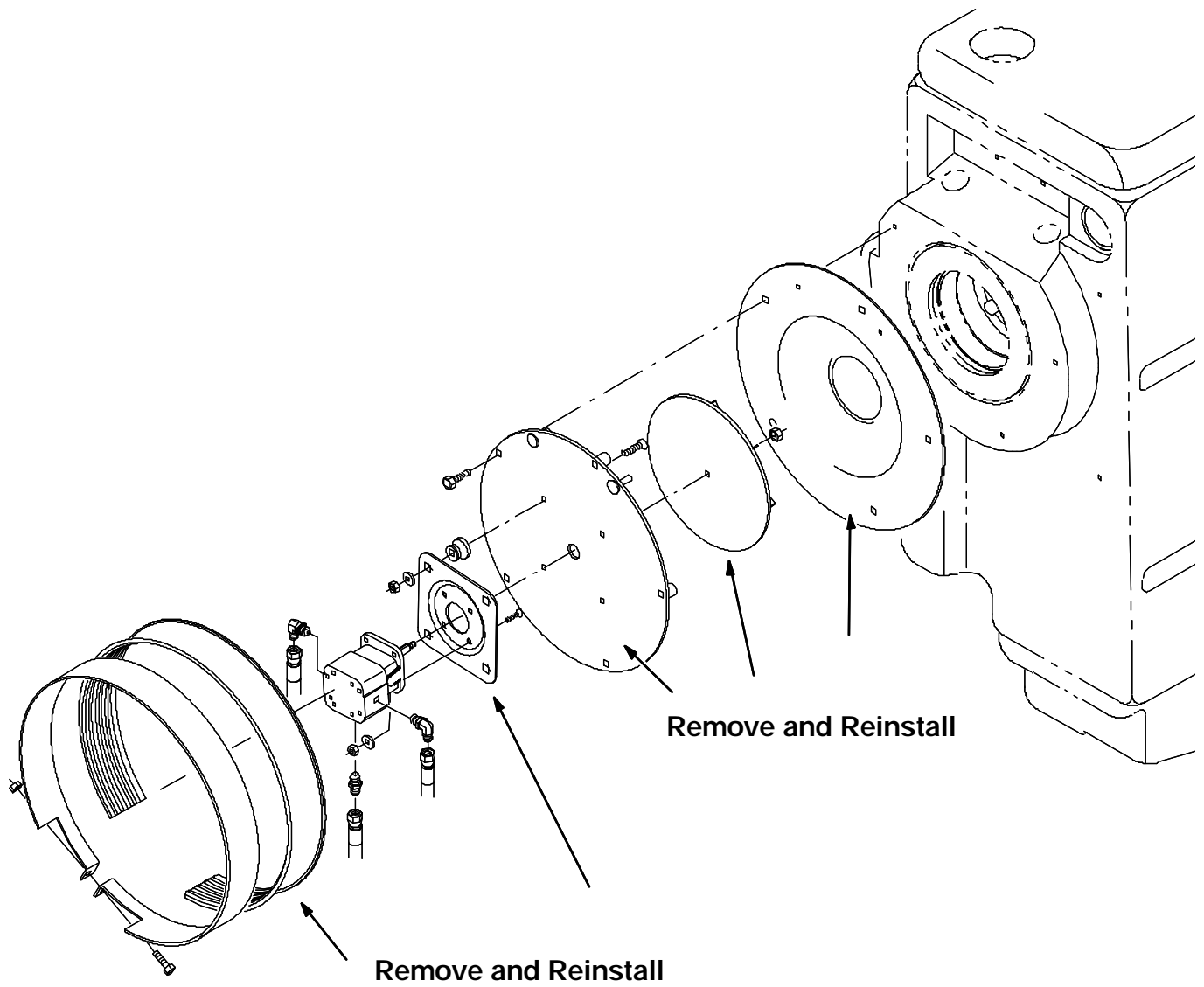


FIG. 2 Scrubbing Vacuum Fan Group



FIG. 3 Recovery Tank Group

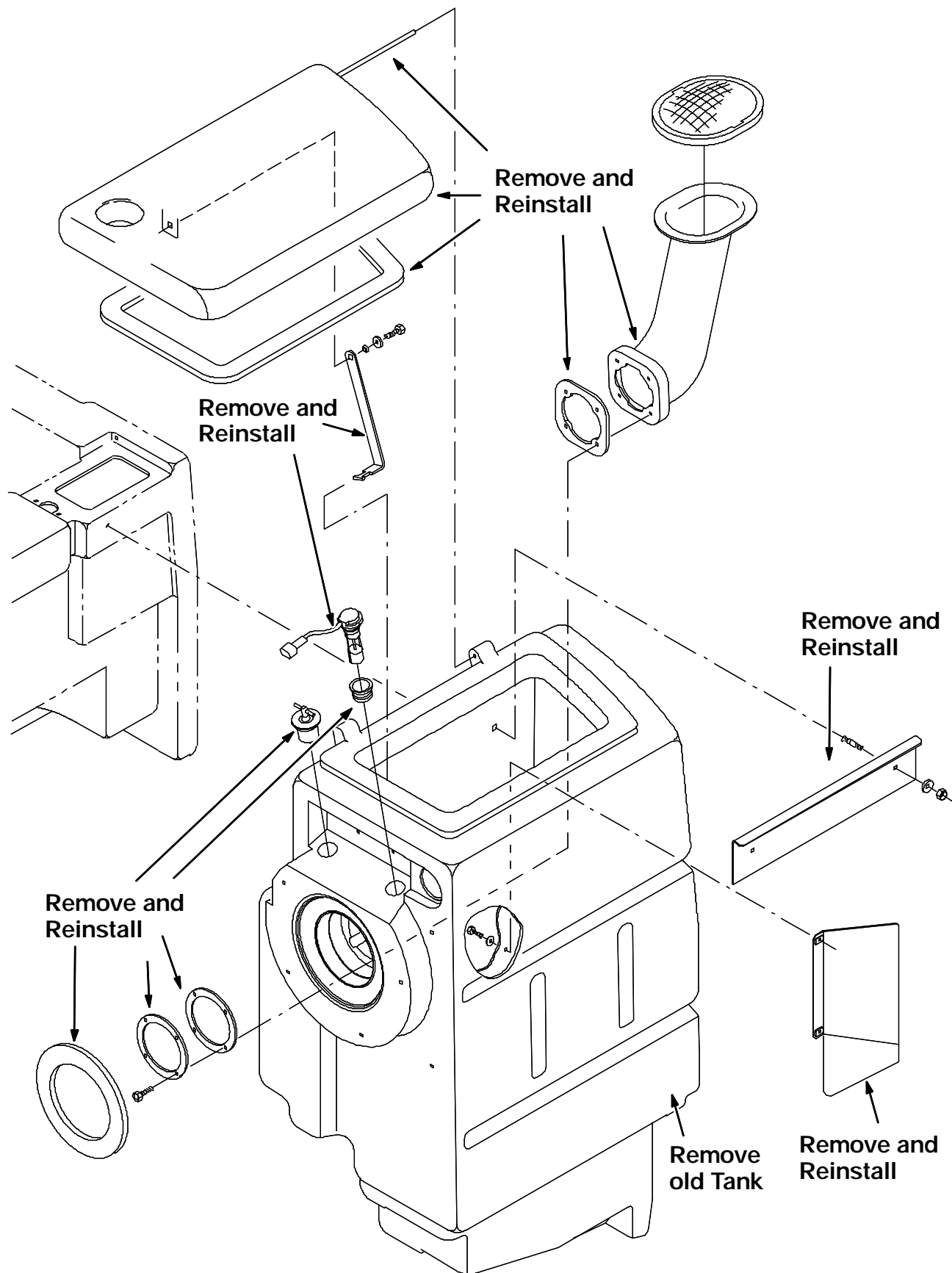


FIG. 4 Recovery Tank Group

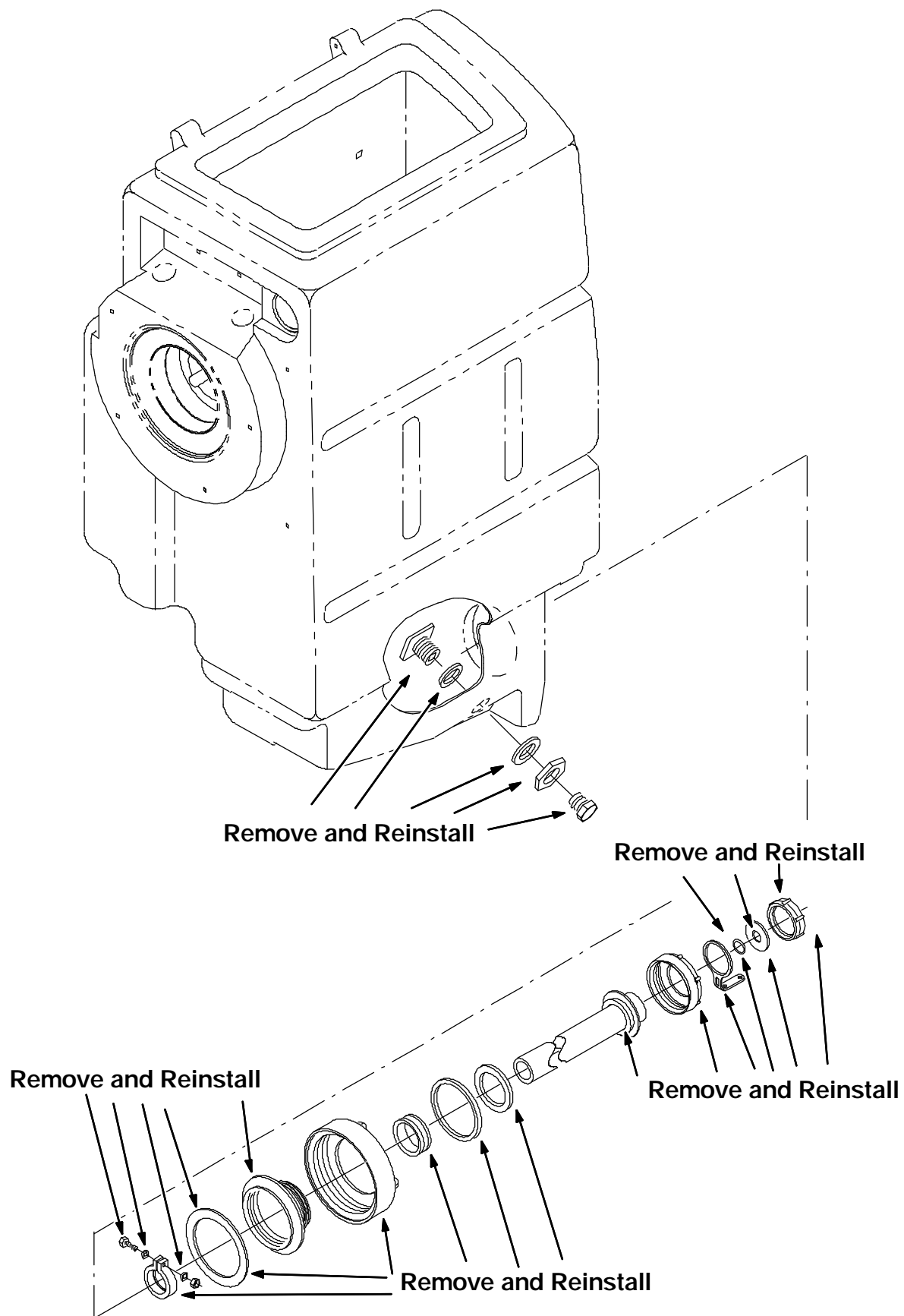


FIG. 5 Recovery Tank Drain Group

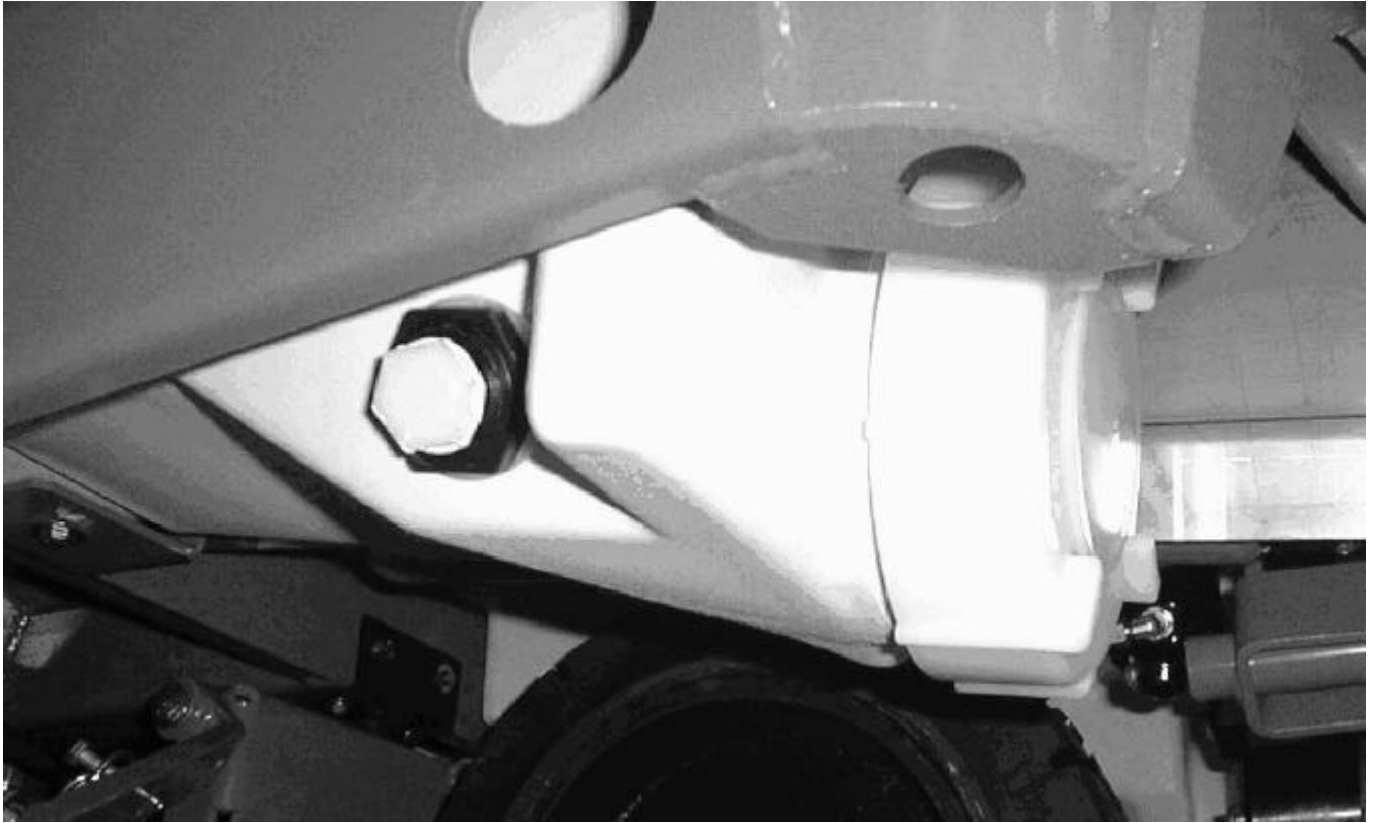


FIG. 6 Recovery Tank Drain Group

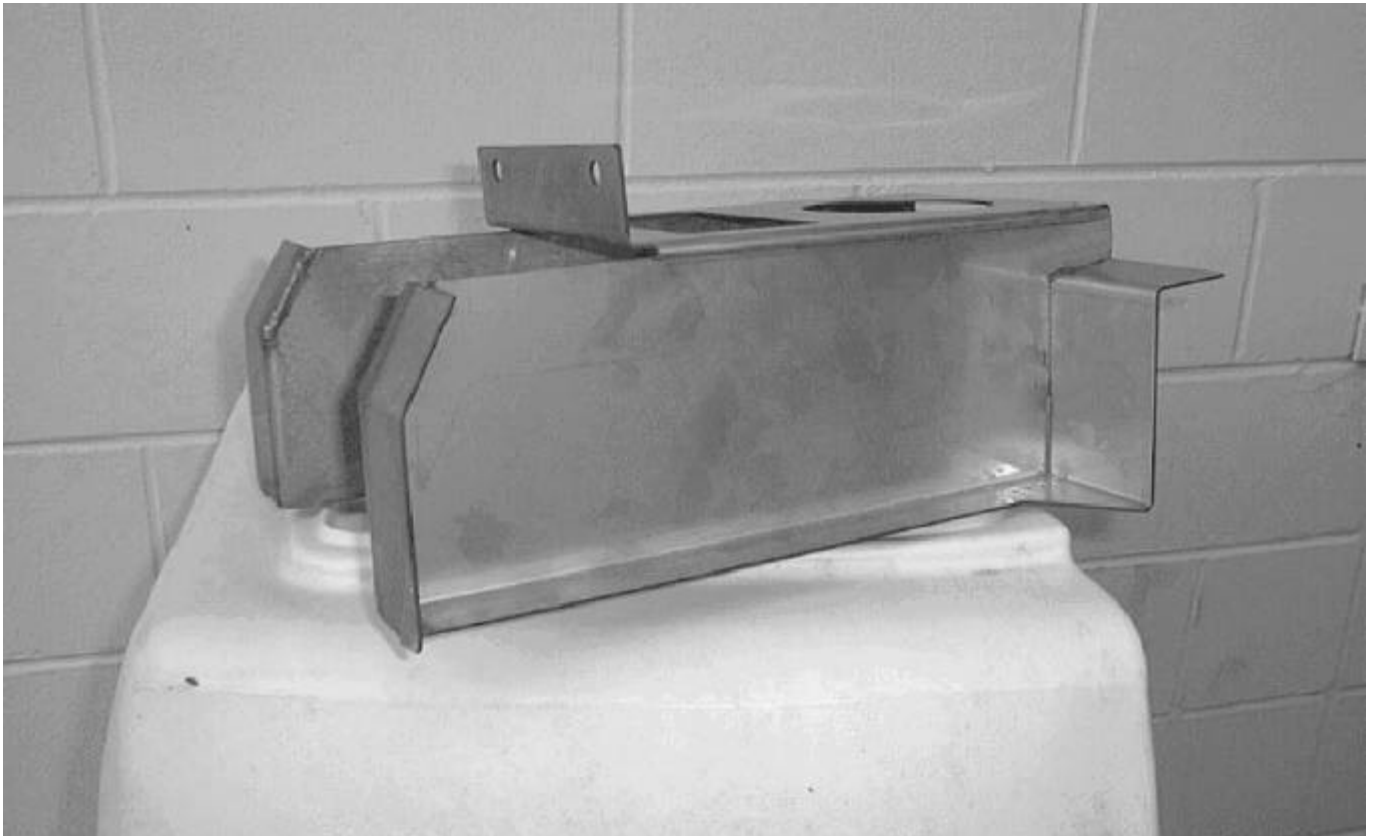


FIG. 7 Recovery Tank Stiffener Bracket

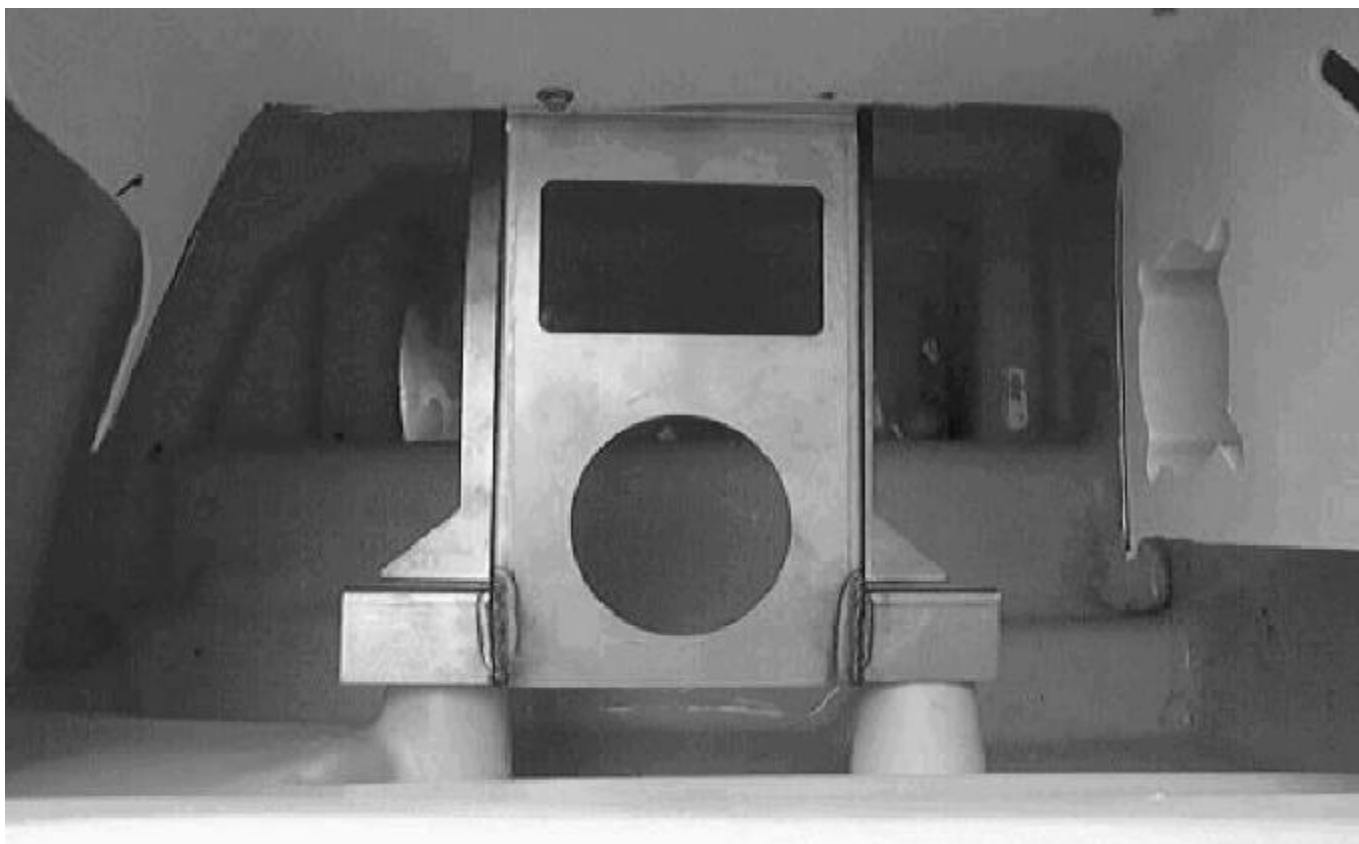


FIG. 8 Recovery Tank Stiffener Bracket Mounting Position

BILL OF MATERIALS FOR RECOVERY TANK REPLACEMENT KIT 365257

Ref.	TENNANT Part No.	Description	Qty.
1	365251	Tank, Recovery	1
2	08716	Scr Hexssm 6x1.0	2
3	01684	Washer Flt .25	2
4	365250	Bracket, Stiffener, Rec. Tank	1

TENNANT COMPANY
P. O. Box 1452
Minneapolis, MN 55440-1452