



INSTRUCTION BULLETIN

No. 340170
Machine: 6080/3640
Published: 9-99/01
System: SWEEPING

NOTE: DO NOT DISCARD the Parts List from the Instruction Bulletin. Place the Parts List in the appropriate place in your machine manual for future reference. Retaining the Parts List will make it easier to reorder individual parts and will save you the cost of ordering an entire kit.

NOTE: Numbers in parenthesis () are reference numbers for parts listed in Bill of Materials.

Installation instructions for kit number 373146

SYNOPSIS / PROBLEM:

This kit contains the parts needed to convert a model 6080 and 3640 sweepers configured with the high airflow package to the reduced flow/live vacuum wand and bag filter configuration.

SPECIAL TOOLS / CONSIDERATIONS: None

(Estimated time to complete: 2 hours)

PREPARATION:

(Refer to FIG. 1 thru 6)

FOR SAFETY: Before leaving or servicing machine, stop on level surface and set parking brake. Then turn off machine and remove key.

1. Open the engine/battery cover and engage the prop rod.
2. Remove the debris hopper.
3. Unlatch and remove the filter cover. Disconnect vacuum hose from filter cover.
(Refer to FIG.1)

INSTALLATION:

(Refer to FIG. 1 thru 6)

1. Remove and discard the existing vacuum tube, hose, and cuff from the machine.
(Refer to FIG. 1)
2. Remove and discard the the hose elbow coupling from the filter cover. (Refer to FIG. 1)
3. Remove and discard the washers and seal from the frame. (Refer to FIG. 1)
4. **ELECTRIC MACHINE:** Disconnect and remove the battery located over the existing vacuum chamber.



WARNING: Always disconnect battery cables from machine before working on electrical components.

5. Remove and discard the battery spacer. (Refer to FIG. 1)
6. **LP MACHINE:** Remove the LP tank from the machine. Unlatch the two LP front panel locks and remove the panel from the machine.

7. Remove the hex screw holding the existing vacuum chamber in the machine. Remove the vacuum chamber from the machine. Remove the steel baffle from the vacuum chamber. Discard the vacuum chamber. Install the steel baffle into the new vacuum chamber (5). (Refer to FIG. 1 and 2)
8. Install the new vacuum chamber seal (7) on the new vacuum chamber (5). (Refer to FIG. 2)
9. Install the new vacuum tube seal (6) on the end of the vacuum chamber (5). (Refer to FIG. 2)
10. Assemble the hose (1) to the wand (2) and cuff (3). Assemble the seal (4) to the cuff (3). (Refer to FIG. 2)
11. Install the cuff into the frame. (Refer to FIG. 2)
12. Position the new vacuum chamber (5) into the machine. (Refer to FIG. 2)
13. Install the wand (2) and hose assembly through the frame, into the vacuum seal (6). (Refer to FIG. 2)
14. Reinstall the hex screw and tighten the vacuum chamber (5). (Refer to FIG. 2)
15. Install the flange cover (8) and seal (4) over the hole in the filter cover using the screws supplied (9). (Refer to FIG. 3)
16. Reinstall the filter cover and re-latch.
17. Reinstall the debris hopper.
18. **Electric Machine:** Install battery and reconnect battery cables.
19. **LP Machine:** Reinstall the front cover and lock the tabs. Reinstall the LP tank.
20. Remove all of the panel filter related parts (shaker motor, shaker bar, shaker brackets, panel filter, retainer brackets, hose cuff tube, and misc. parts). (Refer to FIG. 5)
21. Use the two hole plugs (17) to fill the two holes left open when the shaker bar attachment hardware was removed. (Refer to FIG. 5)
22. Turn the hose cuff a 1/4 turn and pull it out of the machine frame. Remove the sleeve from the end of the flex cuff. (Refer to FIG. 5 and 6)
23. Install the tube elbow (13) into the end of the flex cuff about 1/2 inch. Reinstall the cuff and elbow in the machine frame and turn a 1/4 turn to lock. Push the elbow into the cuff so total engagement is about 1-1/2 inch. (Refer to FIG. 6)
24. Remove the two screws from the bottom hole of the hood hinges. Save the nyloc nuts. (Refer to FIG. 6)
25. Install the two pan screws (15) through the empty hood hinge holes. (Refer to FIG. 6)
26. Install the vacuum bag screen (12) over the two new screws (15). Install the two washers (16) and the two nyloc nuts saved in step 6. Hand tighten hardware. (Refer to FIG. 6)
27. Install the hole in the new filter bag over the tube elbow (13). (Refer to FIG. 6)

28. Install the vacuum wand coupling (11) to the wand extension (10) as shown. Install assembly to existing brackets. (Refer to FIG. 4)
29. Start the machine and operate the sweeping function. Check for proper operation of the vacuum system.

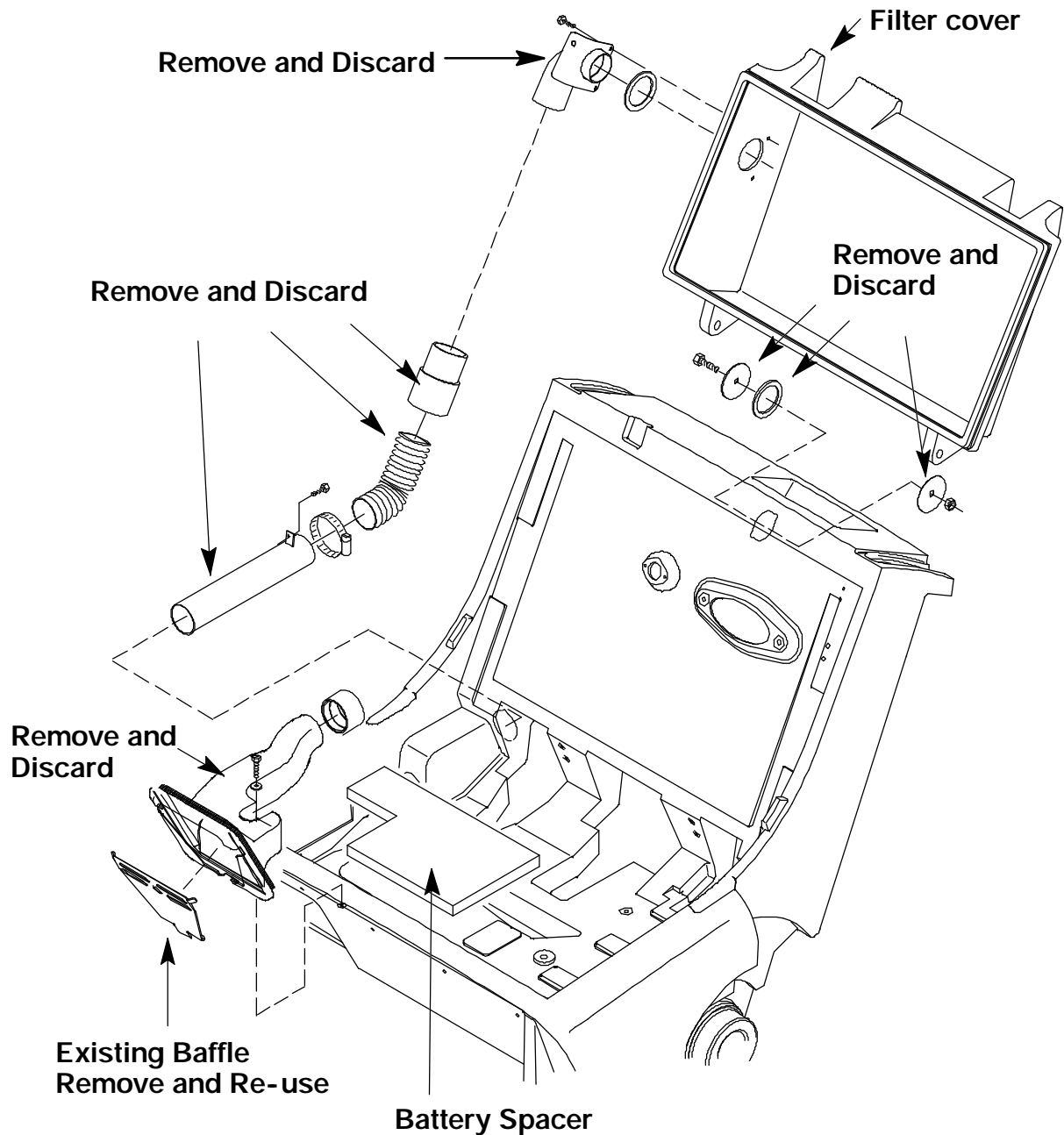


FIG. 1 High Air Flow Assembly Removal

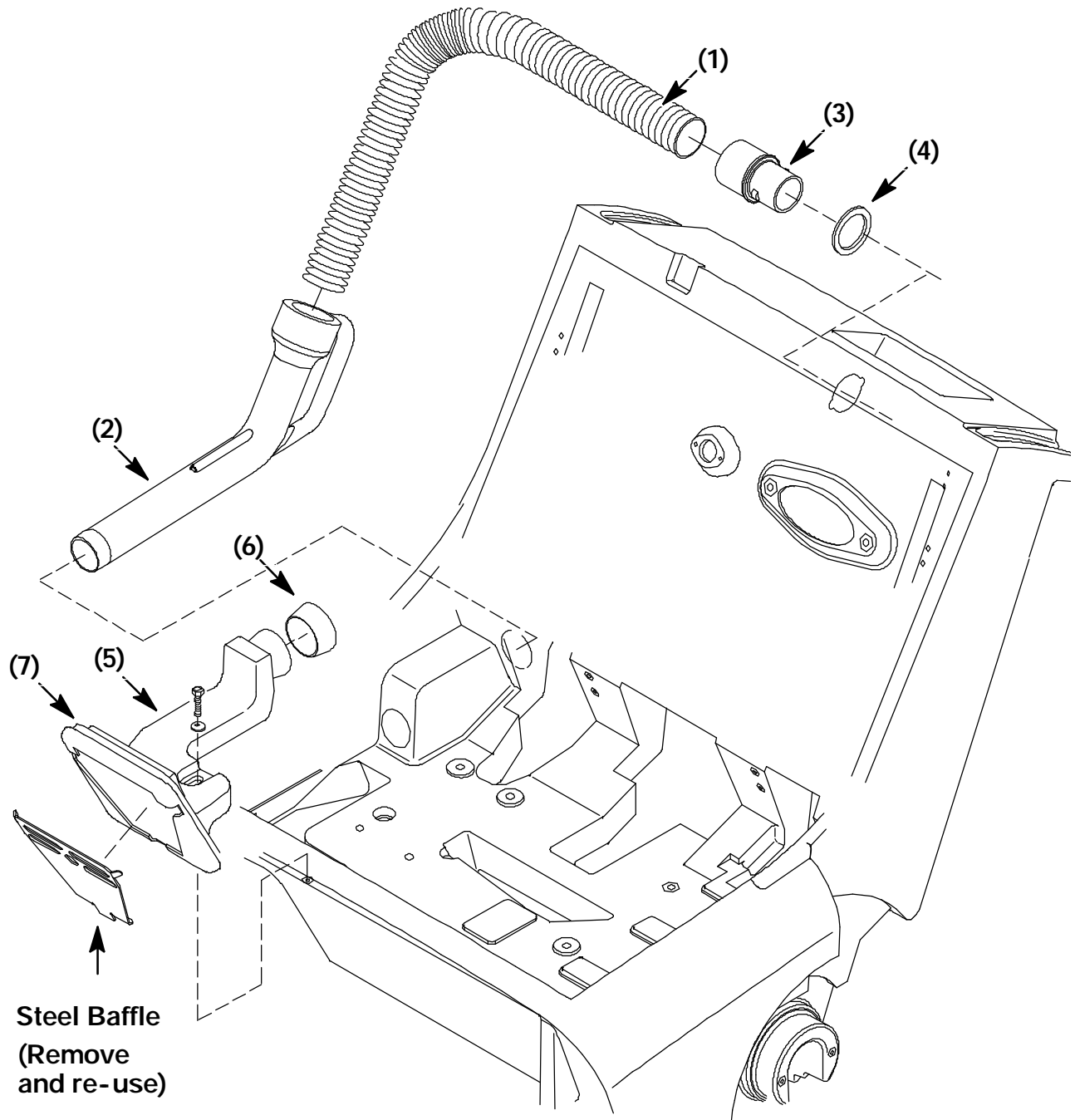


FIG. 2 Reduced Flow Assembly Installation

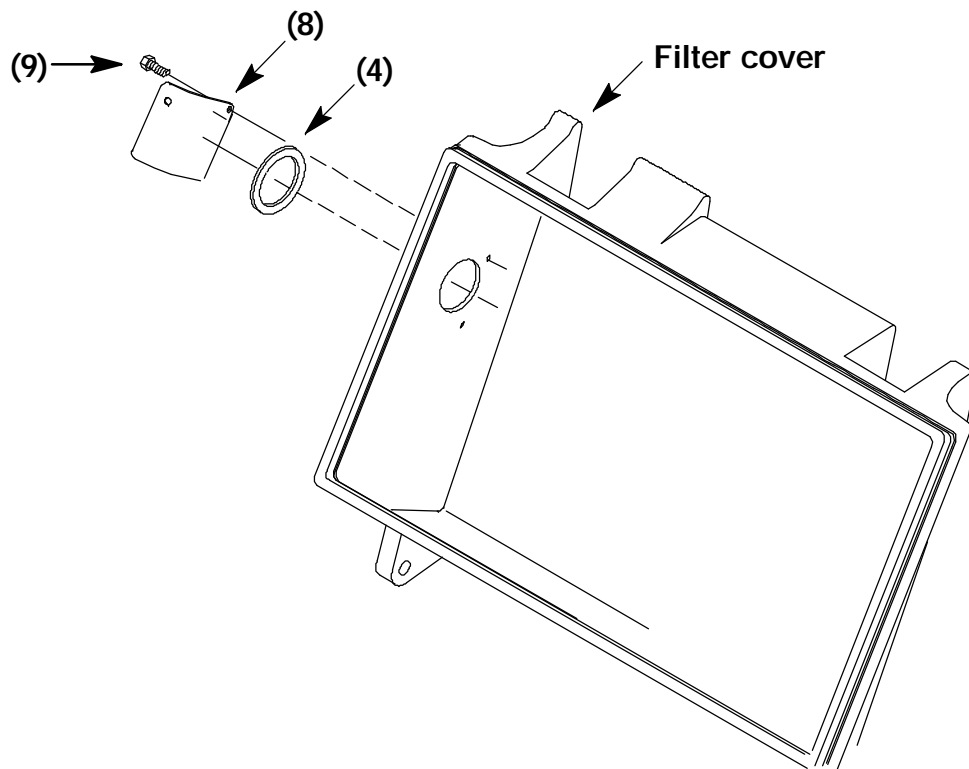


FIG. 3 Flange Cover Assembly

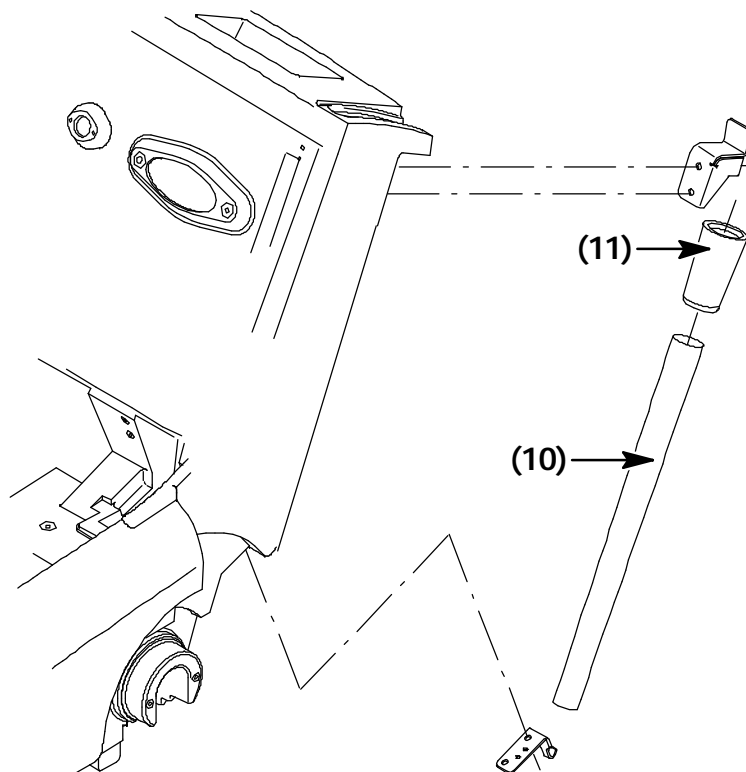


FIG. 4 Vacuum Wand Attachment Parts

New hole plug (17)
goes in this hole

REMOVE THESE PARTS

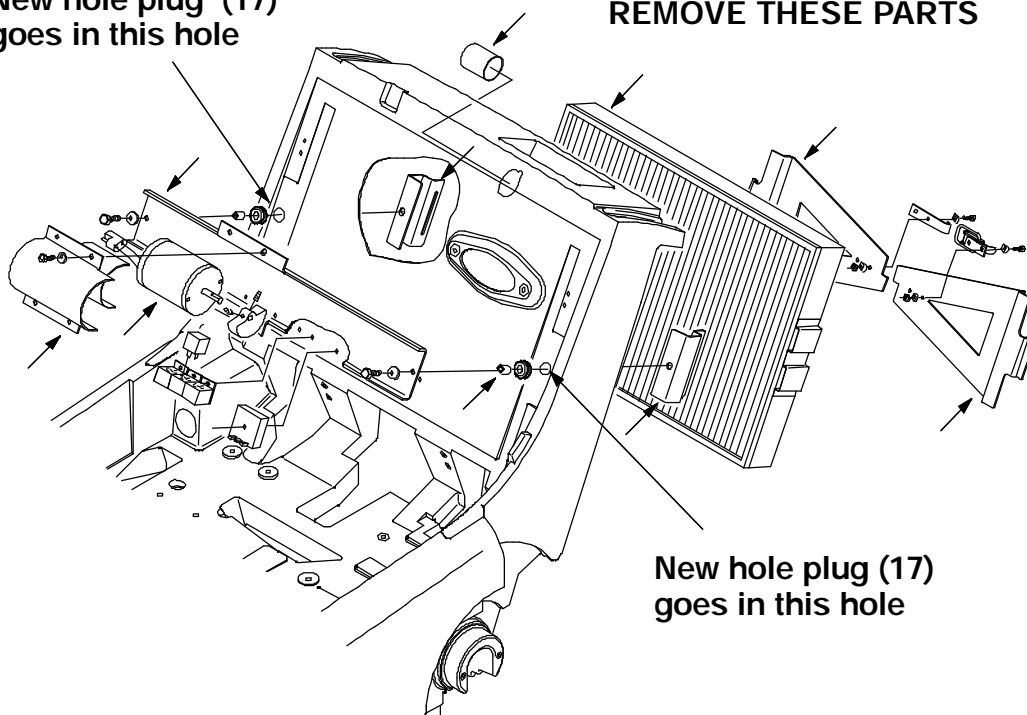


FIG. 5 Panel Filter Assembly (Parts to Remove)

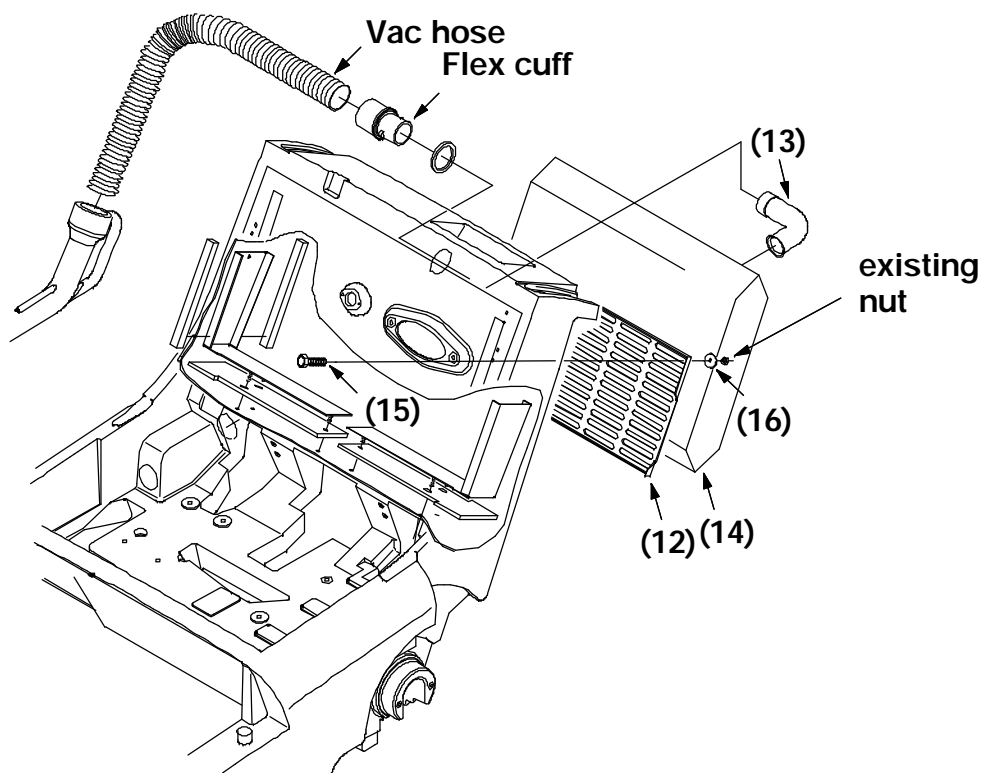


FIG. 6 Filter Bag Assembly

BILL OF MATERIALS FOR REDUCED FLOW BAG FILTER KIT 373146

Ref.	TENNANT Part No.	Description	Qty.
1	80464	Hose	1
2	373124	Wand	1
3	80270	Cuff	1
4	80392	Seal	2
5	373126	Vacuum chamber	1
6	373125	Seal, wand	1
7	80096	Seal, chamber	1
8	373145	Flange, cover	1
9	20394	Screw	3
10	80354	Vacuum wand extension	1
11	80299	Vacuum wand coupling	1
12	80103	Vacuum bag screen	1
13	80433	Vacuum bag tube	1
14	80432	Vacuum bag, disposable	1
15	09258	Pan screw, M6	2
16	41178	Flat washer, .25 in.	2
17	80062	Hole Plug, .81 in.	2

TENNANT COMPANY
P. O. Box 1452
Minneapolis, MN 55440-1452