



INSTRUCTION BULLETIN

No. 340165
Machine: 6100E
Published: 10-98/00
System: OPTIONS

NOTE: DO NOT DISCARD the Parts List from the Instruction Bulletin. Place the Parts List in the appropriate place in your machine manual for future reference. Retaining the Parts List will make it easier to reorder individual parts and will save you the cost of ordering an entire kit.

NOTE: Numbers in parenthesis () are reference numbers for parts listed in Bill of Materials.

Installation instructions for kit number 83376

SYNOPSIS / PROBLEM:

This kit contains the parts needed to install a rollout battery case kit on the model 6100E sweeper.

Please follow step-by-step instructions.

SPECIAL TOOLS / CONSIDERATIONS: Hand drill, .375 in drill bit

(Estimated time to complete: 2 hours)

PREPARATION:

(Refer to FIG. 1, 2 and 3)

1. Turn off machine.

FOR SAFETY: Before leaving or servicing machine, stop on level surface and set parking brake. Then turn off machine and remove key.

2. Raise the operator's seat and locate the battery compartment.
3. Disconnect battery cables from machine.



WARNING: Always disconnect battery cables from machine before working on electrical components.

INSTALLATION:

(Refer to FIG. 1, 2 and 3)

1. Remove the left side cover shroud.
2. Remove and set aside all battery cables. Remove and set aside all batteries from the machine. (Refer to FIG. 1)

NOTE: The batteries will need to be reinstalled with the wires in the same pattern after the rollout case kit is installed. Take note of the battery cable hook up pattern before removal.

3. Remove the plastic battery tray and battery spacers. (Refer to FIG. 1)
4. Remove the battery brace bracket. (Refer to FIG. 1)
5. Measure and drill four .375 inch holes under the right side of the seat and mount the battery case stop bracket (20) according to the measurements shown in figure 3. (Refer to FIG. 3)

NOTE: Some machines will have the holes already drilled.

6. Mount the battery roller bracket (1) and battery roller channels (2) with mounting hardware.
(Refer to FIG. 2)
7. Mount two rubber bumpers (22) with hex screws (24), washers (12, 23) and lock nuts (21).
(Refer to FIG. 2)
8. Mount the channel bumper (19) to the left side of the machine with hex screws (11) and flat washers (12). (Refer to FIG. 2)
9. Install the brace support bracket (17), with hex screws (11) and washers (12).
(Refer to FIG. 2)
10. Mount the battery case brace (7) to the seat support brace with a hex screw (15), washers (14) , and a lock nut (16). (Refer to FIG. 2)
11. Apply a small amount of locktite (25) to one end of the threaded rod (9) and screw it into the knob (10). Thread the rod through the free end of the battery case brace (7). Apply another small amount of locktite (25) to opposite end of the threaded rod (9) and cap off with the rubber bumper (8). (Refer to FIG. 2)
12. Raise the battery case brace (7), and slide the rollout battery case (18) onto the battery roller bracket (1). (Refer to FIG. 2)
13. Lower the battery case brace (7) and place the free end into the brace support bracket (17). (Refer to FIG. 2)
14. Turn the knob (10) clockwise until the rollout battery case (18) is tight against the rubber bumpers (22) on the opposite side of the machine. (Refer to FIG. 2)
15. Install the entire battery group into the rollout battery case (18) in the same formation prior to removal. (Refer to FIG. 2)
16. Reconnect the the battery cables to the batteries in the same pattern they were connected prior to removal. (Refer to FIG. 2)
17. Replace the left side cover shroud.
18. Lower the operator's seat.
19. Turn on the machine and check batteries for proper operation.

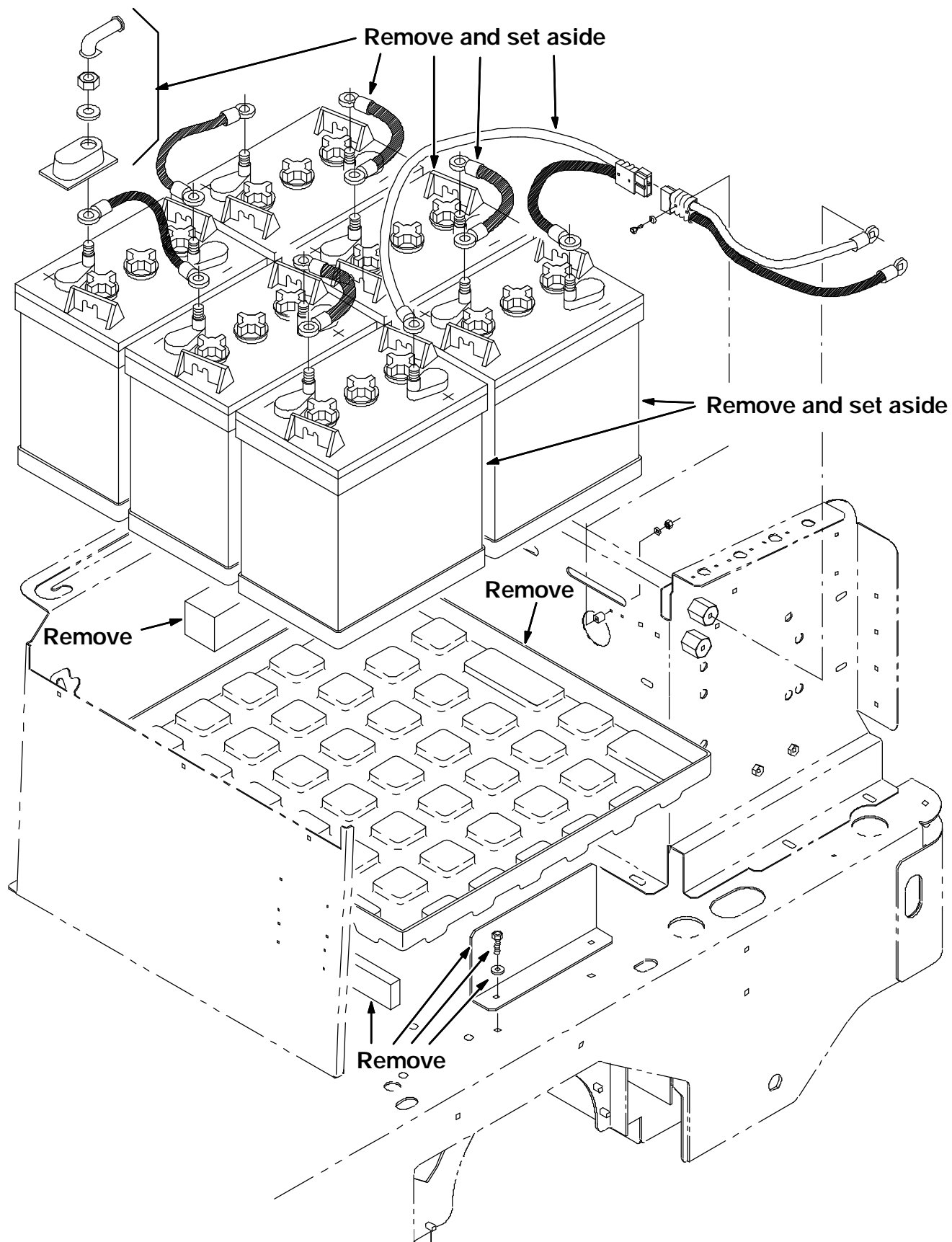


FIG. 1 Battery Group Removal

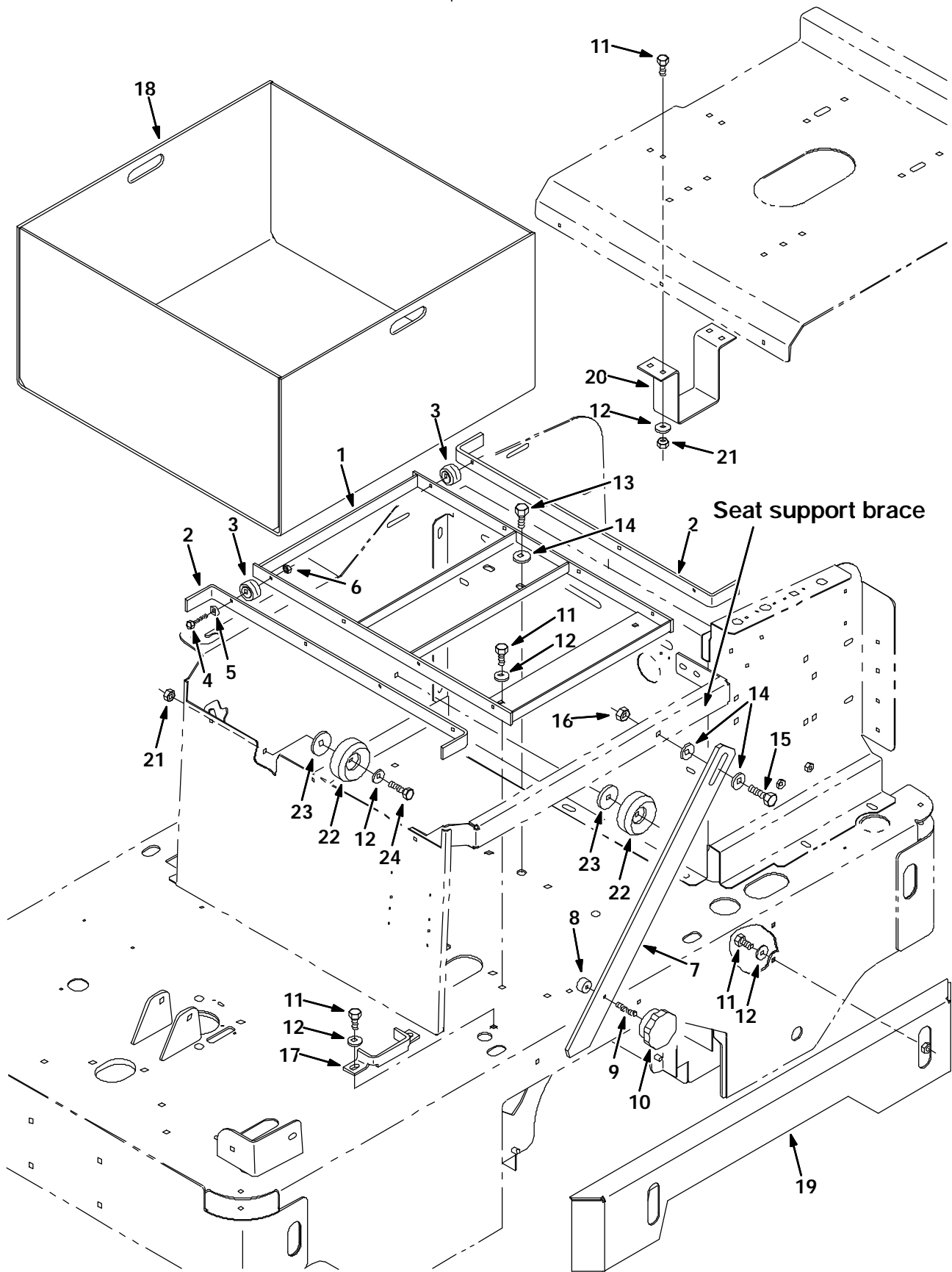


FIG. 2 Rollout Battery Case Kit Installation

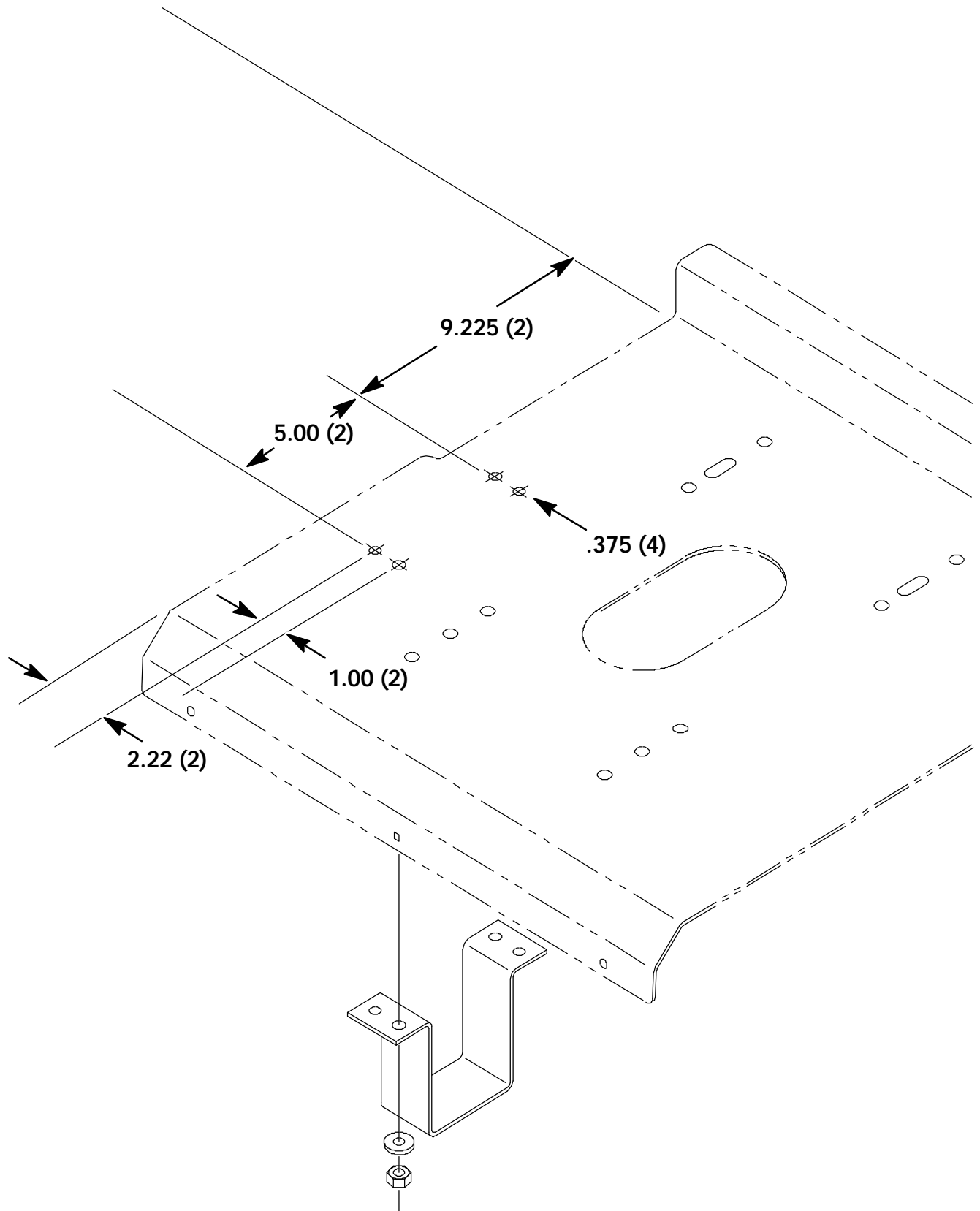


FIG. 3 Dimensions for Battery Case Stop Mounting Holes

BILL OF MATERIALS FOR ROLLOUT BATTERY CASE KIT 83376

Ref.	TENNANT Part No.	Description	Qty.
1	83371	Bracket Wldt, Roller, Battery	1
2	83370	Channel, Roller, Battery Case	2
3	369415	Bearing, Cam Follower	8
4	25047	Screw, Hex, .25-20 x 1.25, G5	8
5	32490	Washer, Flat, .25 Hard	8
6	32981	Nut, Hex, Lock, .25-20, NI	8
7	83362	Brace, Battery Case	1
8	83377	Bumper, Rubber	1
9	83381	Rod, Threaded, M6 x 1.50 Lg	1
10	83361	Knob, 2.38D .88H M6 Insert	1
11	16931	Screw, Hex, M08-1.25 x 20, 8.8	14
12	32491	Washer, Flat, .31 Hard	14
13	06961	Screw, Hex, M10-1.5 x 20, 8.8	2
14	32492	Washer, Flat, .38 Hard	4
15	39284	Screw, Hex, M10-1.5 x 35, 8.8	1
16	41430	Nut, Hex, Lock, M10-1.5, NI	1
17	83363	Bracket, Support, Brace	1
18	83365	Case Wldt, Battery, Roll-Out	1
19	83375	Channel Wldt, Bumper	1
20	83382	Bracket, Stop, Battery Case	1
21	08709	Nut, Hex, Lock, M08-1.25, NI	6
22	369481	Bumper, Rubber, 2.50 Dia. x 1.00	2
23	36996	Washer	2
24	76570	Screw, Hex, M08-1.25 x 30, 8.8	2
25	19859	Adhesive, thread	1

TENNANT COMPANY
P. O. Box 1452
Minneapolis, MN 55440-1452