



INSTRUCTION BULLETIN

No. 340163
Machine: 6100
Published: 08-2015
Rev. 05

NOTE: DO NOT DISCARD the Parts List from the Instruction Bulletin. Place the Parts List in the appropriate place in the machine manual for future reference. Retaining the Parts List will make it easier to reorder individual parts and will save the cost of ordering an entire kit.

NOTE: Numbers in parenthesis () are reference numbers for parts listed in Bill of Materials.

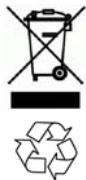
Installation instructions for kit numbers **83225 (12VDC)** and **83253 (36VDC)**

SYNOPSIS:

This kit contains the parts needed to install a backup alarm kit on the 6100 sweeper.
Please follow step-by-step instructions.

SPECIAL TOOLS / CONSIDERATIONS: NONE

(Estimated time to complete: 1 hour)



PROTECT THE ENVIRONMENT

Please dispose of packaging materials, used machine components such as batteries and fluids in an environmentally safe way according to local waste disposal regulations.

Always remember to recycle.

PREPARATION: BOTH KITS

1. Park the machine on a clean level surface, turn off the machine, remove the key, and set the parking brake..

FOR SAFETY: Before leaving or servicing machine, stop on level surface, set parking brake, turn off machine, and remove key.

2. Disconnect the battery cable from the machine.



WARNING: Always disconnect battery cables from machine before working on electrical components.

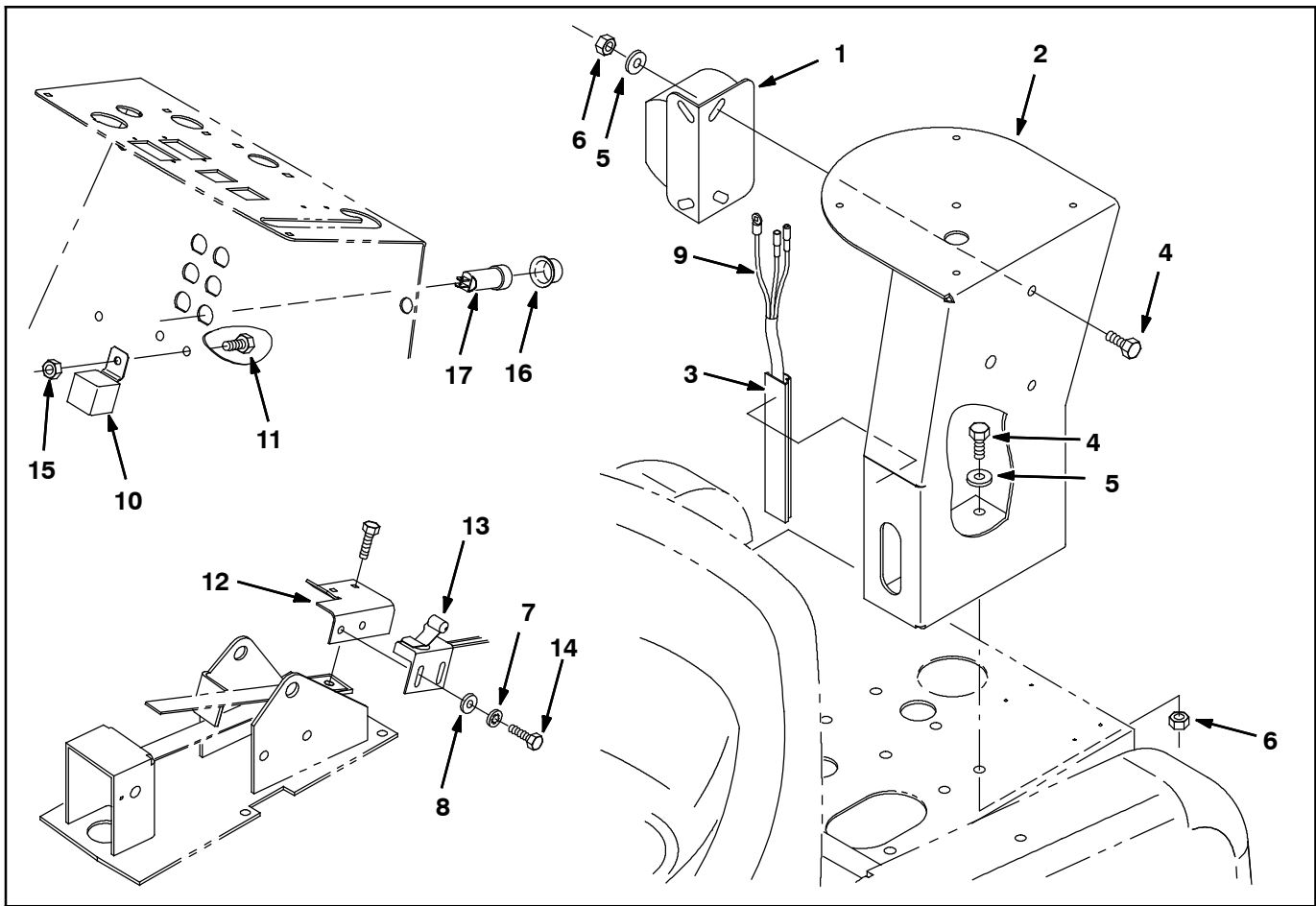


FIG. 1- Alarm Kit, Backup, Ped, CI [6100]- 83225

1. Remove the debris hopper. Lower and remove the filter to access the mounting holes for the pedestal (2).
2. Use two hex screws (4), two washers (5), and two flange nuts (6) to mount the pedestal (2) to left rear corner of machine. (Fig. 1)
3. Connect the backup/warning harness (9) to the backup alarm (1). (Fig. 1 / Fig. 4)
4. Use mounting hardware to mount the backup alarm (1) to the pedestal (2). (Fig. 1)
5. Connect the backup/warning harness (9) to the main wire harness. (Fig. 1 / Fig. 5)
6. Open the circuit breaker panel and use a pan screw (11) and lock nut (15) to install the relay (10) onto the back side of the panel. (Fig. 1)
7. Install the 15- Amp circuit breaker (17) and circuit breaker boot (16) onto the circuit breaker panel. (Fig. 1)
8. Reinstall the circuit breaker panel onto the machine.
9. Use the hex screws (14), lock washers (7), and flat washers (8) to mount the roller switch assembly (13) to the switch mounting bracket (12). (Fig. 1)
10. Remove the propel pedal from the machine. Set the mounting hardware aside.
11. Mount the switch (13)/switch mounting bracket (12) to the propel pedal. (Fig. 1)
12. Reinstall the propel pedal onto the machine.
13. Connect the cable from the switch (13) to the main wire harness. (Fig. 1 / Fig. 4)
14. Install the vinyl duct (3) onto the pedestal (2) and insert the backup/warning harness (9) into the vinyl duct. (Fig. 1)
15. Reconnect the battery cable to the machine.
16. Turn on machine and check backup alarm for proper operation.

INSTALLATION: Kit 83253

NOTE: If machine is not equipped with the optional vacuum wand, refer instructions on previous page to install the backup alarm to the pedestal (2).

1. Remove the debris hopper. Lower and remove the filter to access the mounting holes for the pedestal (2).
2. Use two hex screws (4), two washers (5), and two flange nuts (6) to mount the backup alarm (1) to the backup alarm bracket (3). (Fig. 3)
3. Connect the backup/warning harness (9) to the backup alarm (1). (Fig. 3 / Fig. 5)
4. Use two hex screws (4), two washers (5), and two flange nuts (6) to mount the backup alarm bracket (3) to the vacuum wand box. (Fig. 3)
5. Connect the backup/warning harness (13) to the main wire harness. (Fig. 3 / Fig. 5)
6. Open the circuit breaker panel and install the 15- Amp circuit breaker (10) and circuit breaker boot (11) into the circuit breaker panel. (Fig. 3)
7. Connect the main wire harness to the 15- Amp circuit breaker (10).
8. Reinstall the circuit breaker panel onto the machine.
9. Remove the propel pedal from the machine. Set the mounting hardware aside.
10. Use hardware included with the snap switch (12) Install the switch onto the propel pedal. (Fig. 2 / Fig. 3)
11. Connect the snap switch (12) wires to the main wire harness. (Fig. 3 / Fig. 4)
12. Reinstall the propel pedal onto the machine.
13. Remove the left side panel. (Fig. 3)
14. Use one hex screw (8) and interior lock washer (9) to install the relay (7) onto the electrical panel. (Fig. 3)
15. Reinstall the left side panel.
16. Reconnect the battery cable to the machine.
17. Turn on machine and check backup alarm for proper operation.



FIG. 2

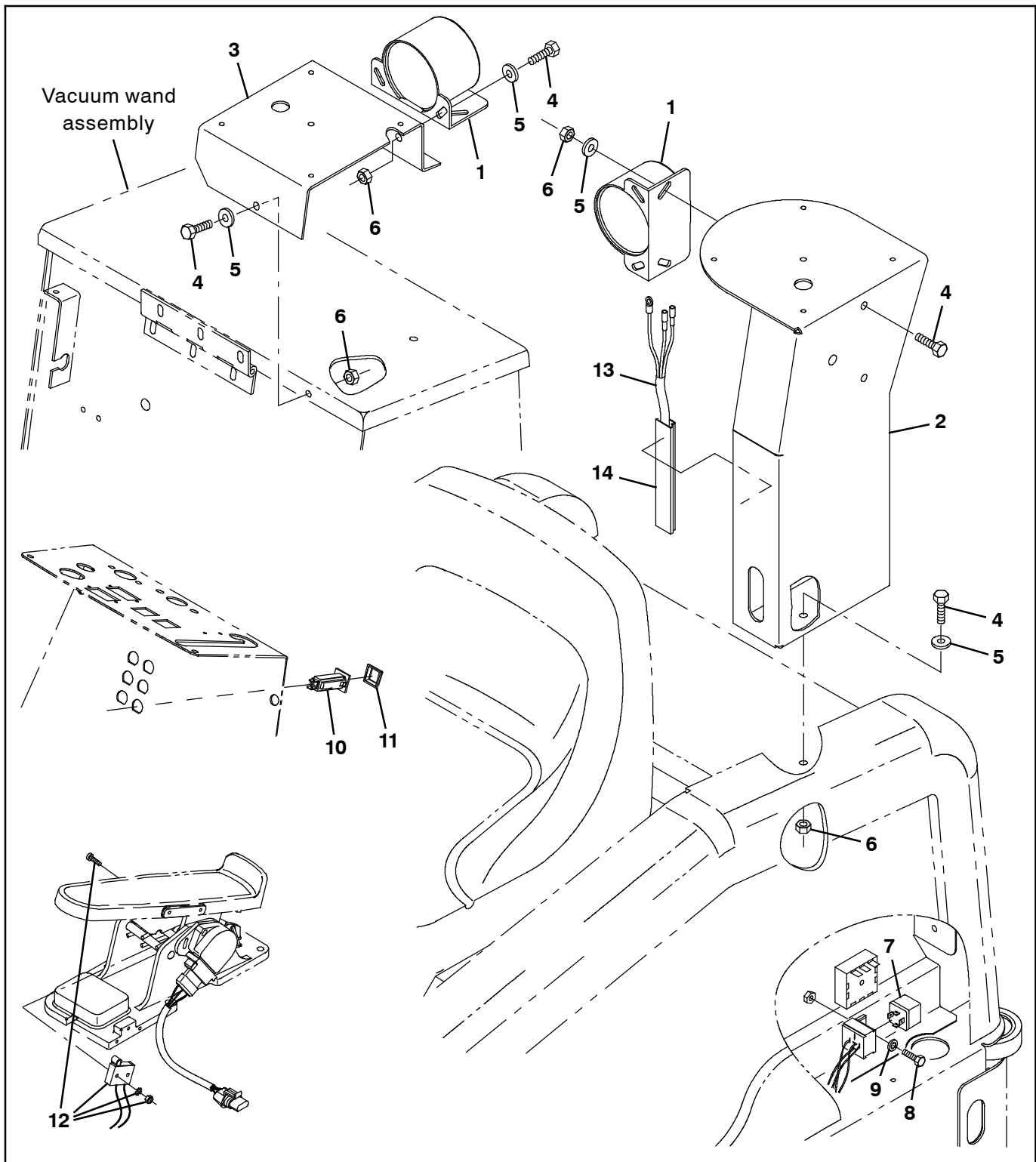


FIG. 3-Alarm Kit, Backup, CI [6100]-83253

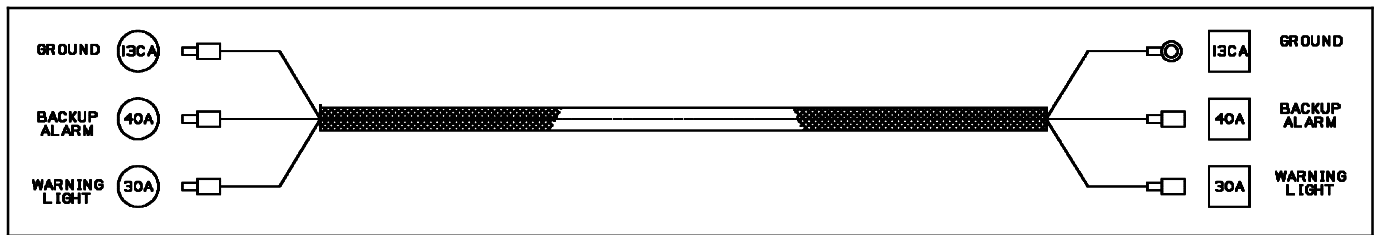


FIG. 4

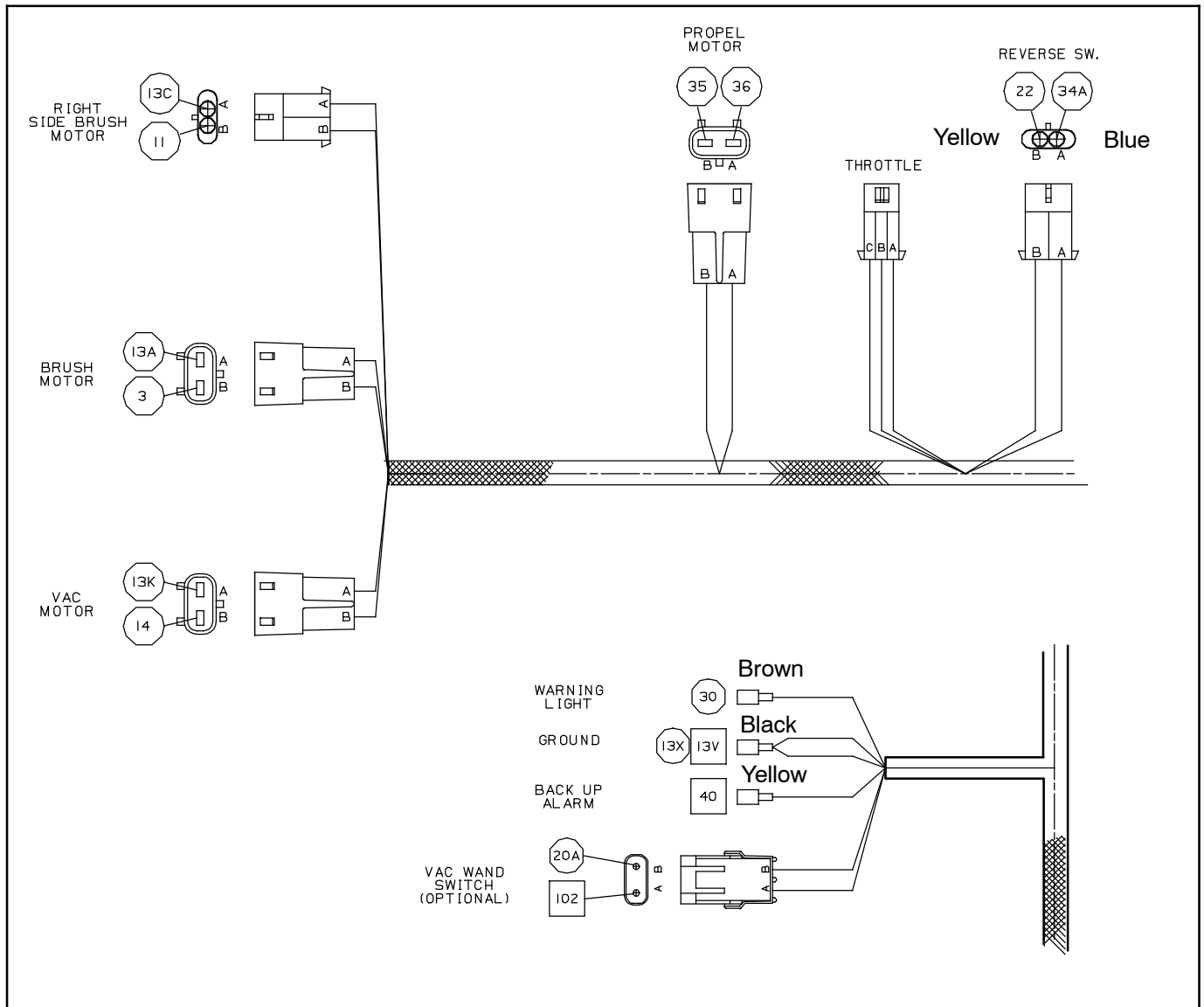


FIG. 5

Bill of Materials for Alarm Kit, Backup, Ped, CI [6100] - 83225

	Ref.	Tennant Part No.	Description	Qty.
▽		83225	Alarm Kit, Backup, Ped, CI [6100]	1
▲	1	9007131	Alarm Assy, Backup, 12- 24VDC 82- 107DBA	1
▲	2	384400	Pedestal, Mtg, Light, Flsh	1
▲	3	1027395	Duct, Vyl, 0.73 X 0.75 .50d 48.0l	1
▲	4	16735	Screw, Hex, M8 X 1.25 X 16, 8.8	5
▲	5	39349	Washer, Flat, 0.31 SAE	5
▲	6	07791	Nut, Hex, Flng, M8 X 1.25	5
▲	7	32980	Washer, Lock, Int, #10	2
▲	8	19066	Washer, Flat, #10	2
▲	9	81934	Harness, Warning/Backup, 12VDC	1
▲	10	57804	Relay, 12VDC, 40A, SPDT N/O	1
▲	11	09145	Screw, Pan, M6 X 1.0 X 16, 4.8	1
▲	12	83265	Bracket, Angle, Mtg, Switch, RLR	1
▲	13	59965	Switch, Snap Actn, 12VDC 15A No Rlr	1
▲	14	12312	Screw, Hex, M5 X 0.8 X 12, 8.8	2
▲	15	08708	Nut, Hex, Lock, M6 X 1.0, NL	3
▲	16	1064191	Boot, Circuit Breaker	1
▲	17	1064188	Circuit Breaker, 15.0A, Resettable	1

Bill of Materials for Alarm Kit, Backup, CI [6100] - 83253

	Ref.	Tennant Part No.	Description	Qty.
▽		83253	Alarm Kit, Backup, 36V, 6100	1
▲	1	9007131	Alarm Assy, Backup, 12/48vdc	1
▲	2	83530	Pedestal	1
▲	3	83531	Bracket, FI Light & B/U Alarm	1
▲	4	16735	Screw, Hex, M08- 1.25 X 16, 8.8	4
▲	5	39349	Washer, Flat, .31 SAE	4
▲	6	07791	Nut, Hex, Flange, M08- 1.25	4
▲	7	398526	Relay, 36Vdc, 9A, Spdt	1
▲	8	12312	Screw, Hex, M05- 0.8 X 12, 8.8	1
▲	9	32980	Washer, Lock, Int, #10	1
▲	10	1064188	Circuit Breaker, 15.0A, Resettable	1
▲	11	1064191	Boot, Circuit Breaker	1
▲	12	1042525	Switch Kit, Alarm, Backup [6100]	1
▲	13	81946	Harness, Wire, Warning/Backup	1
▲	14	1027395	Duct, Vyl, 0.73 X 0.75 .50d 48.0l	1

TENNANT COMPANY
P. O. Box 1452
Minneapolis, MN 55440-1452