



# INSTRUCTION BULLETIN

No. 340158  
Machine: 6100  
Published: 6-00/02  
System: OPTIONS

**NOTE: DO NOT DISCARD the Parts List from the Instruction Bulletin. Place the Parts List in the appropriate place in your machine manual for future reference. Retaining the Parts List will make it easier to reorder individual parts and will save you the cost of ordering an entire kit.**

*NOTE: Numbers in parenthesis ( ) are reference numbers for parts listed in Bill of Materials.*

Installation instructions for kit number 83199

## **SYNOPSIS / PROBLEM:**

This kit contains the parts needed to install a QuickMop™ kit on the model 6100 sweeper. Please follow step-by-step instructions.

## **SPECIAL TOOLS / CONSIDERATIONS: NONE**

(Estimated time to complete: 2 hours)

## **PREPARATION:**

(Refer to FIG. 1 thru 11)

1. Turn off machine and set parking brake.

**FOR SAFETY: Before leaving or servicing machine, stop on level surface and set parking brake. Then turn off machine and remove key.**



**WARNING: Always disconnect battery cables from machine before working on electrical components.**

## **INSTALLATION:**

(Refer to FIG. 1 thru 11)

1. Mount the bumper weldment (1) to the machine with hex screws (2) and washers (3). (Refer to FIG. 1)
2. Install the keepers (34) and spacers (36) to both sides of the bumper weldment (1) with pan screws (35).
3. Install both latch plate release levers (6) inside weldment housing (4) with two thrust bearings (7), a lock nut (8) and extension spring (29). (Refer to FIG. 1 and 2)
4. Install mounting latches (31) to both sides of the weldment housing (4) with pan screws (32) and lock nuts (33).
5. Mount the left and right lift channel weldments (10, 11) to the weldment housing (4) with clevis pins (13) and cotter pins (5). (Refer to FIG. 1, 4 and 5)
6. Install adjustment bolts (17) with jam nuts (18) in through the top of the left and right channel weldment adjustment openings. (Refer to FIG. 1 and 4)
7. Mount the assembled sub-assembly to bumper weldment (1). Secure the assembly with the new mounting latches (31). (Refer to FIG. 1 and 6)

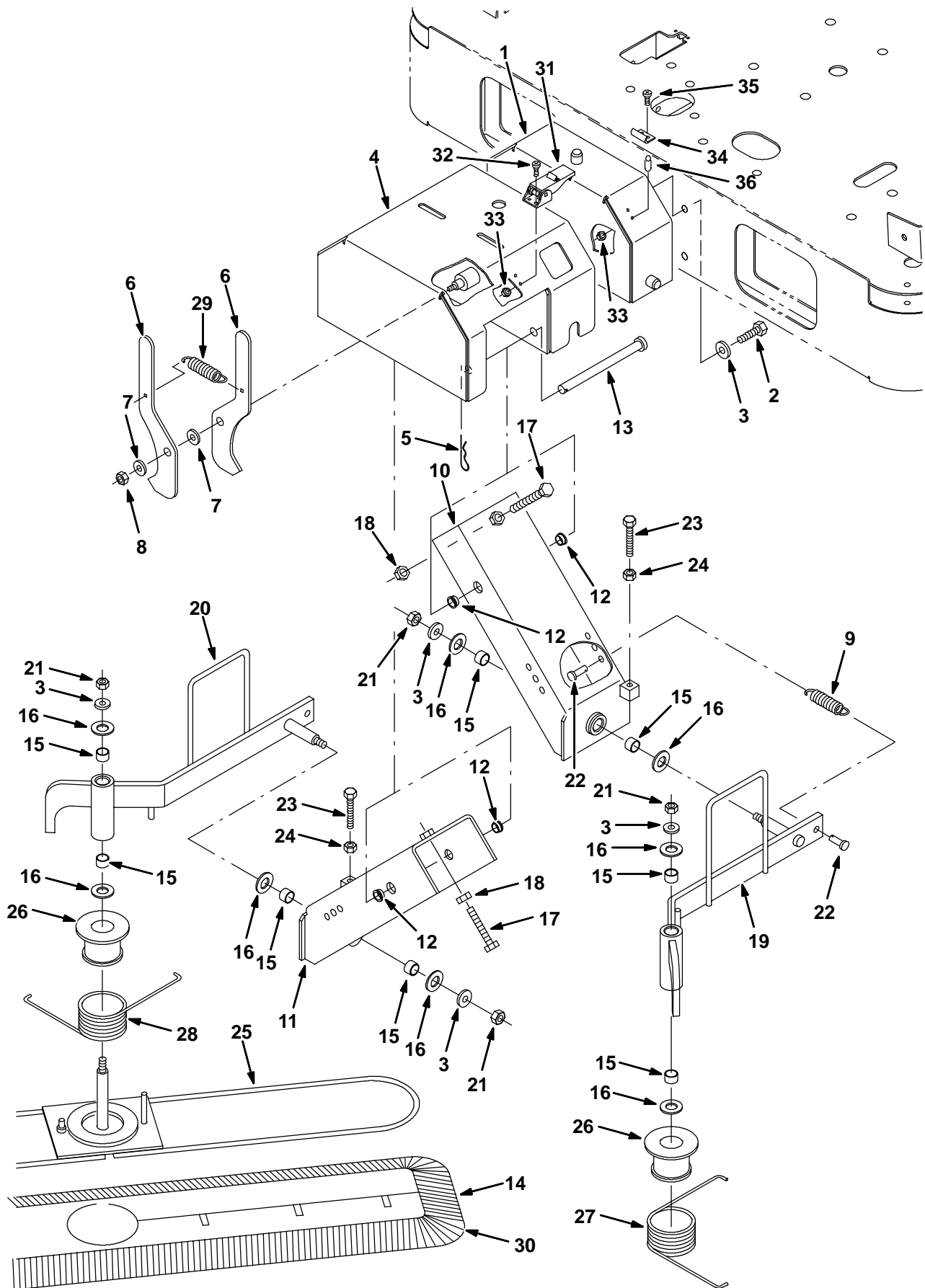
8. Mount the left and right hand lift weldments (19, 20) to the left and right channel weldments (10, 11) with washers (16) .38 washers (3), and lock nuts (21). (Refer to FIG. 1, 7 and 8)

*NOTE: Only hand tighten the lift weldments so they move freely.*

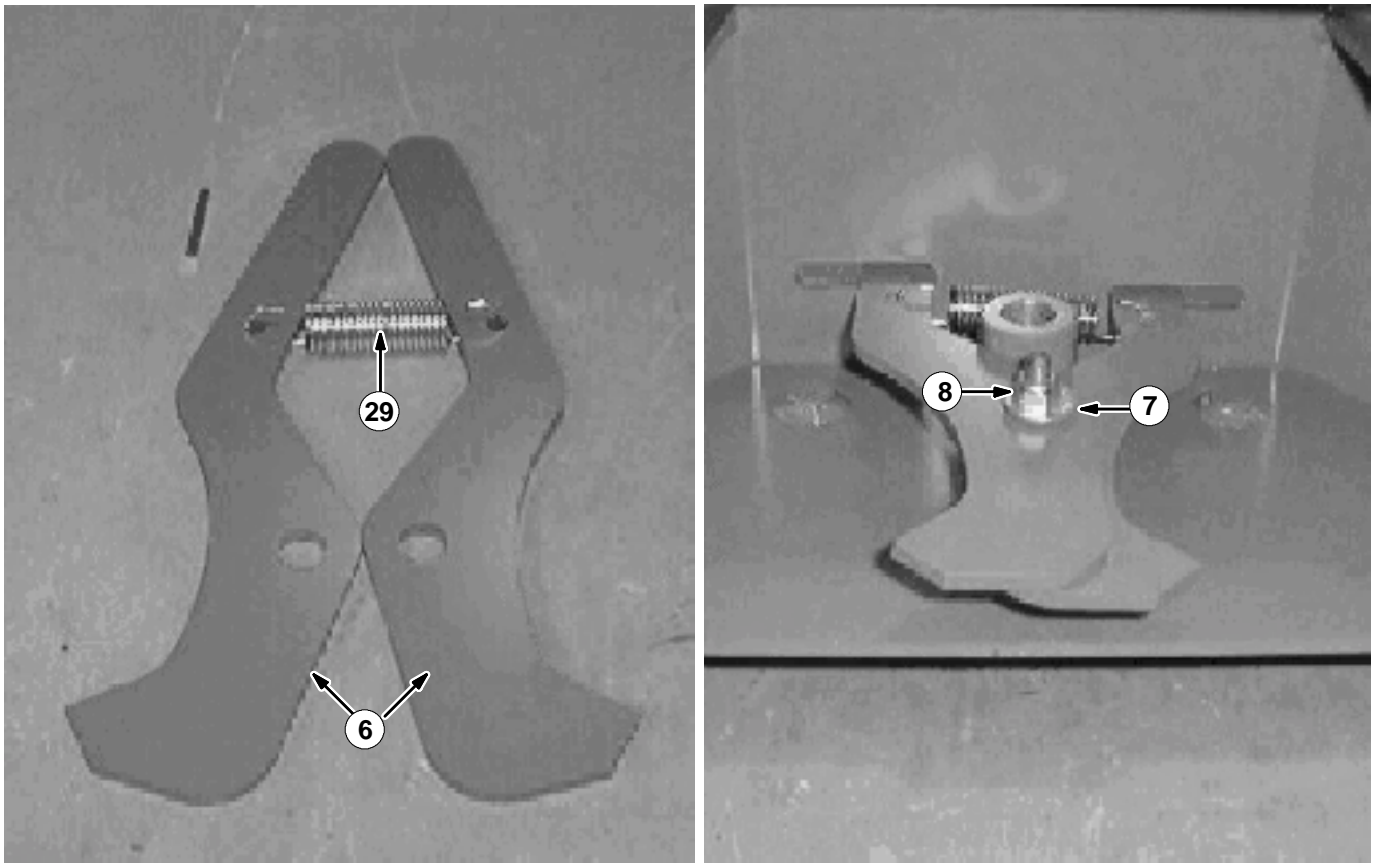
9. Install stop bolt (23) and jam nut (24) in each lift channel weldment (10, 11).  
(Refer to FIG. 1 and 8)
10. Install extension spring (9) for each arm with clevis pins (22) in channel weldments (10, 11) and lift weldments (19, 20). (Refer to FIG. 1 and 9)
11. Install mop frame weldment (25), torsion spring (27, 28) and spring spacers (26) on each arm lift weldment (19, 20) with washers (16), .38 washers (3), and lock nuts (21).  
(Refer to FIG. 1, 10 and 11)

*NOTE: There are right and left side torsion springs. Check fig. 1 and 10 for proper installation. Only hand tighten the mop frame weldments so they may move freely.*

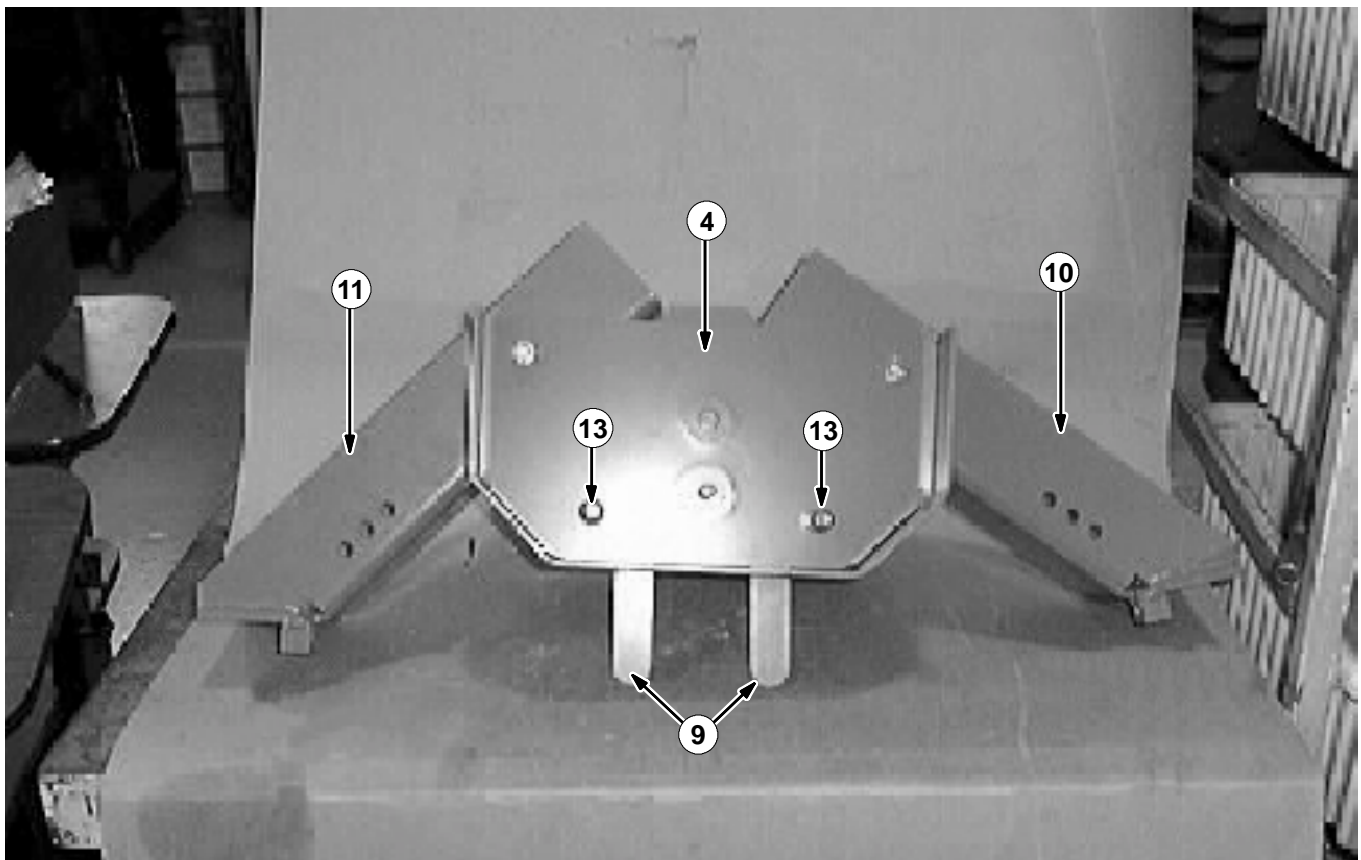
12. Adjust the latches (31) so the assembly is held securely to the bumper weldment when the latches are fastened.
13. Adjust the lift channel weldment adjustment bolts (20) so the carriage floats about 1/8 to 1/4 inch off the ground.
14. Adjust the arm weldment adjustment bolts (26) to level the steel carriage.
15. Once the carriage is level, mount the dust mops (17 or 32) on the mop frame weldments (28). (Refer to FIG. 1)
16. Operate machine, and check QuickMop™ for proper adjustment.



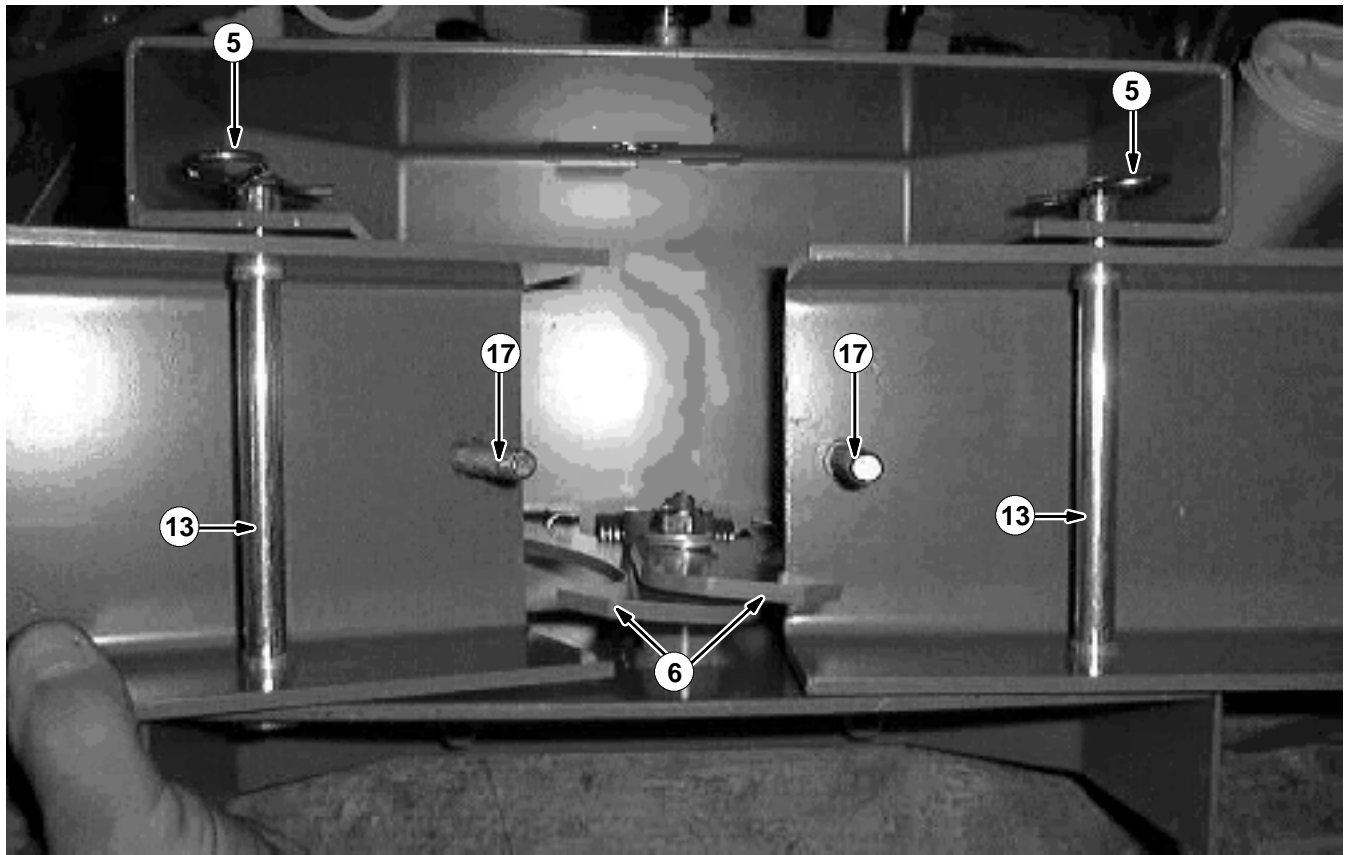
**FIG. 1 - QUICKMOP™ KIT BREAKDOWN**



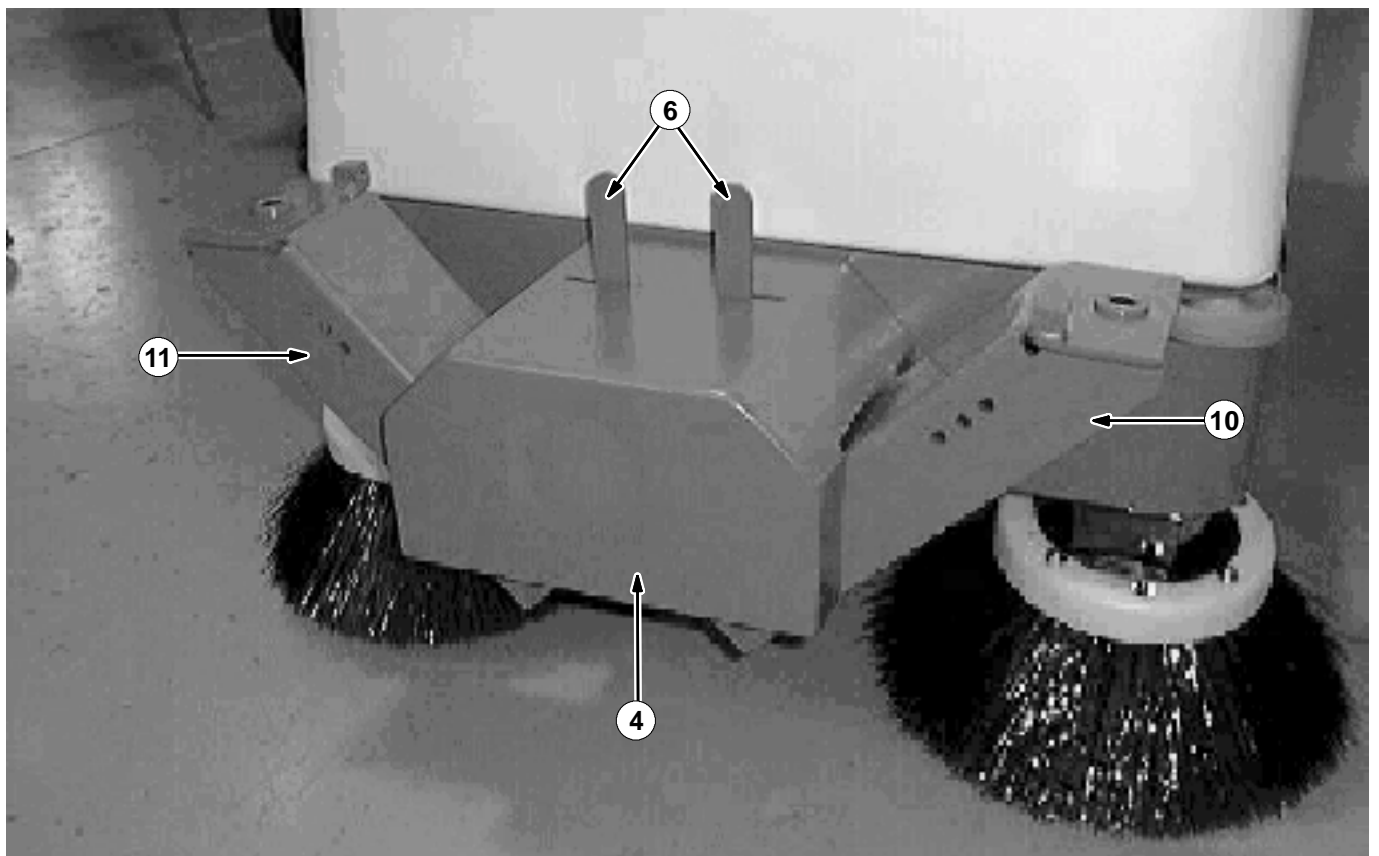
**FIG. 2 - LATCH PLATE/RELEASE LEVER INSTALLATION**



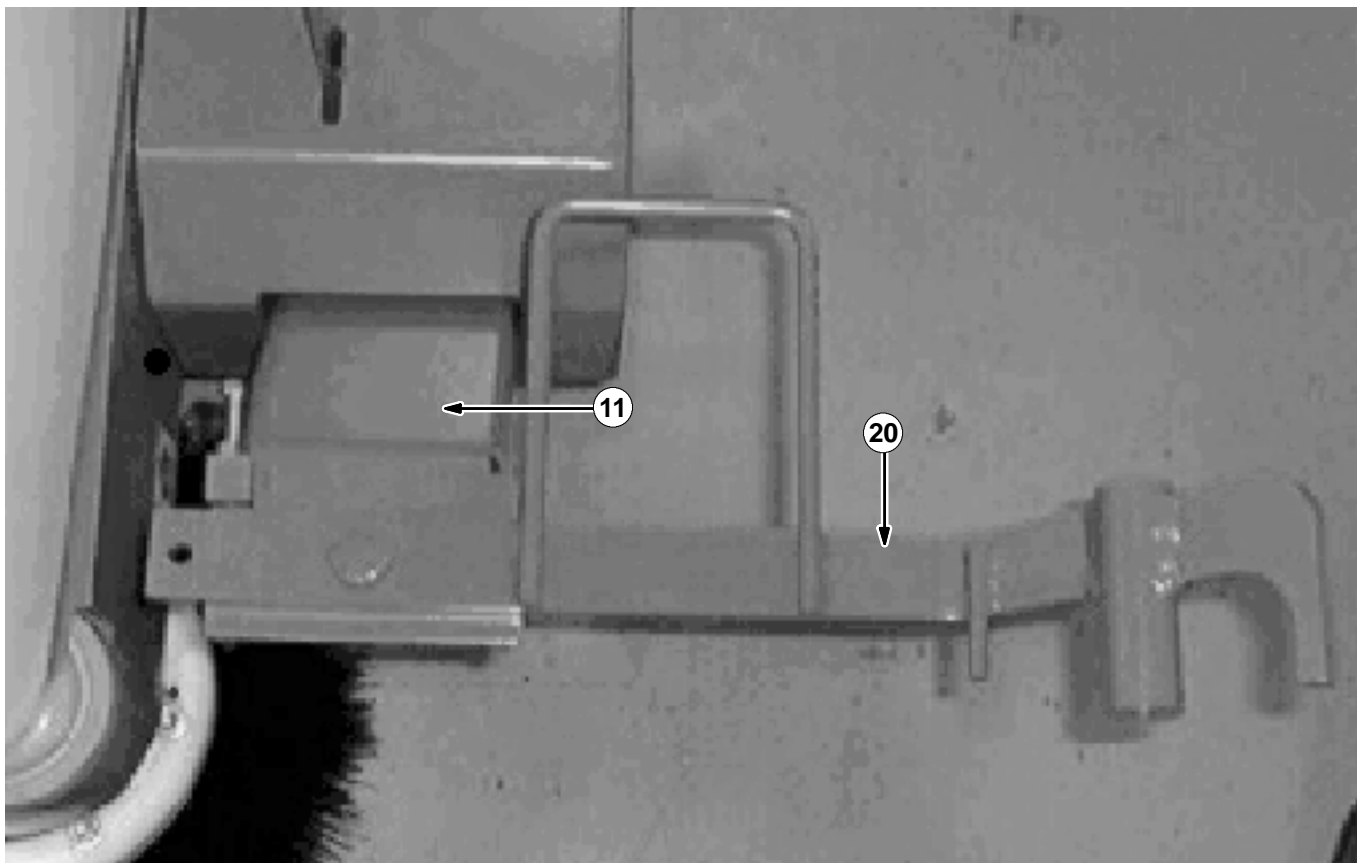
**FIG. 3 - LEFT AND RIGHT HAND CHANNEL WELDMENT ASSEMBLY**



**FIG. 4 - ADJUSTMENT BOLTS INSTALLATION**



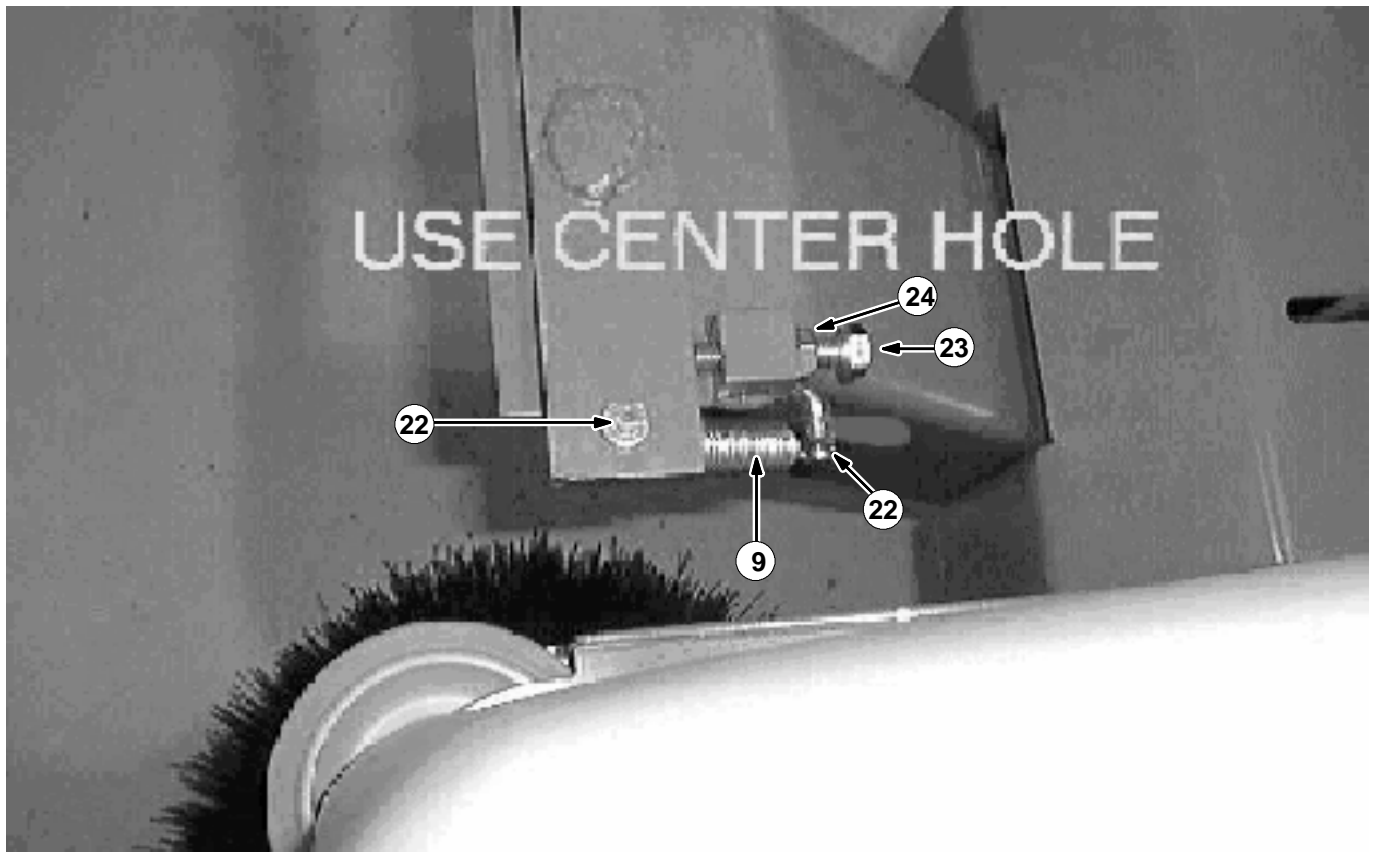
**FIG. 5 - SUB ASSEMBLY INSTALLATION**



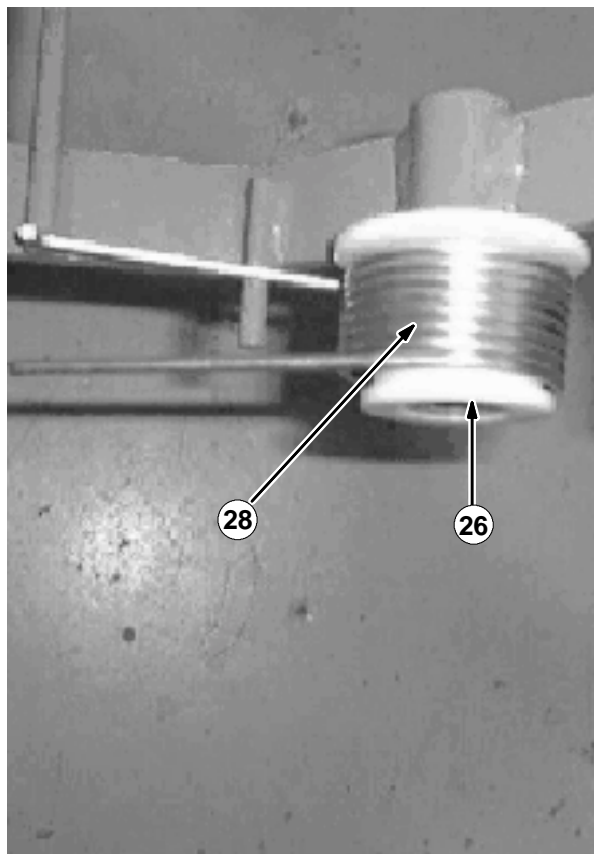
**FIG. 6 - LIFT ARM WELDMENT INSTALLATION**



**FIG. 7 - LIFT ARM WELDMENT INSTALLATION**

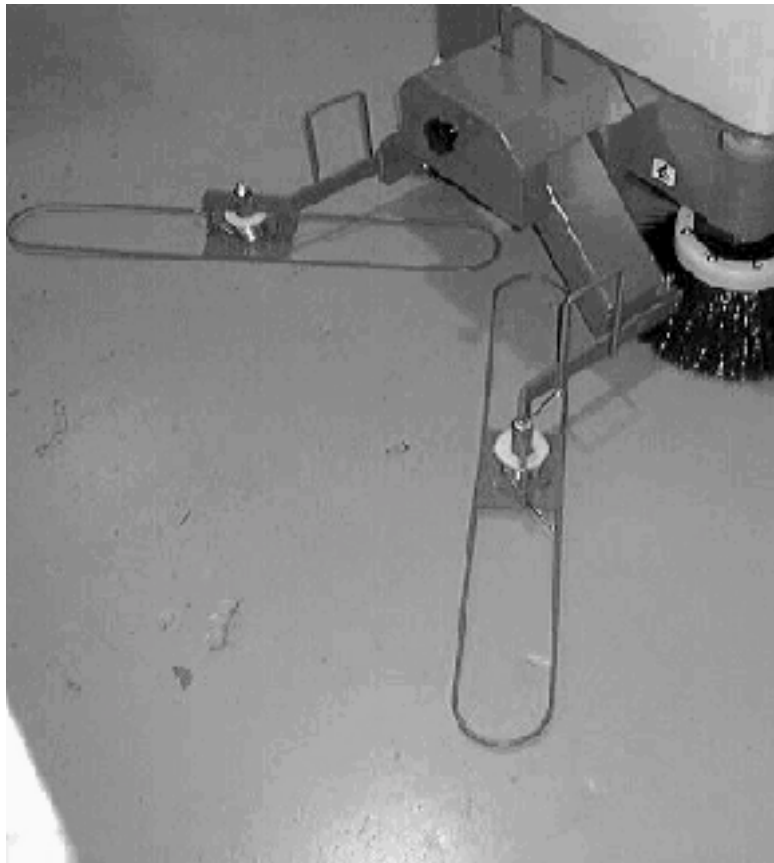


**FIG. 8 - STOP BOLT AND SPRING INSTALLATION**

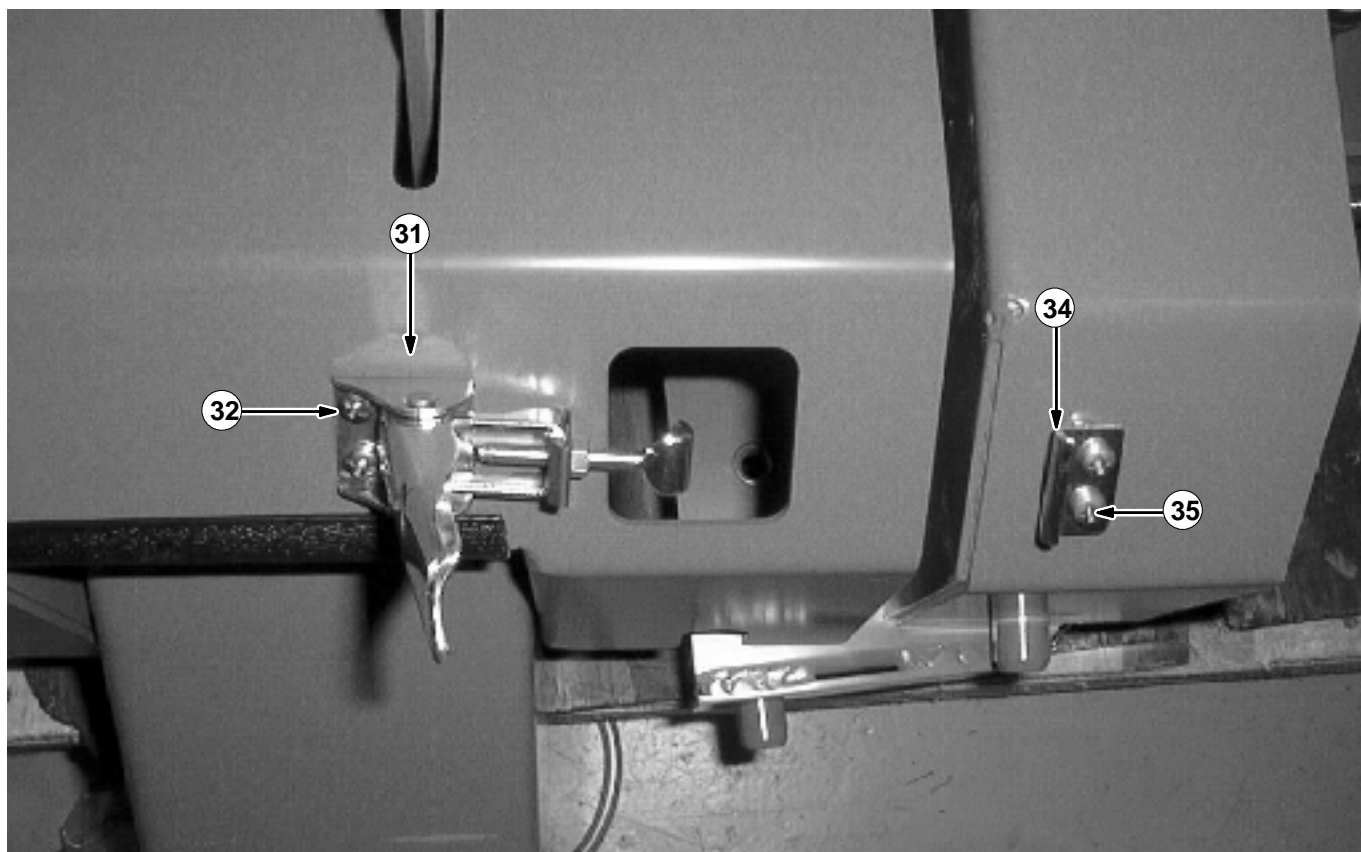


**FIG. 9 - MOP FRAME WELDMENT SPRING INSTALLATION**





**FIG. 10 - MOP FRAME INSTALLATION**



**FIG. 11 - LATCH AND KEEPER INSTALLATION**



**BILL OF MATERIALS FOR QUICKMOP™ KIT 83199**

<b>Ref.</b>	<b>TENNANT Part No.</b>	<b>Description</b>	<b>Qty.</b>
1	384246	Bumper wldt, V-Mop	1
2	39283	Scr, hex, M10 X 1.5 25SE	4
3	32492	Washer, flt .38 Hard SE	8
4	384247	Housing wldt, V-Mop	1
5	02942	Pin, haircotter .62 D	2
6	83338	Plate, latch	2
7	86860	Bearing, thrust 0.50B, 0.87D	2
8	08709	Nut, hxlocnyln M8 X 1.25 SE	1
9	15047	Spring, extension	2
10	83313	Channel wldt, Lift LH	1
11	83315	Channel wldt, Lift RH	1
12	15648	Bushing, flange,	4
13	51225-1	Pin, clevis, 0.50 Dia. X 6.00 LG	2
14	83347	Mop, dust, blue	2
15	07449	Bushing, sleeve 0.62 B	8
16	64425	Washer, .656 B 1.25 Dia	8
17	76438	Scr-hex M10 X 1.5 90 Full Thd	2
18	39312	Nut HX Std M10 X 1.5	2
19	83318	Arm wldt, Lift LH	1
20	83324	Arm wldt, Lift RH	1
21	41430	Nut, hxlocnyln M10 X 1.5	4
22	39019	Pln, Clevis	4
23	363976	Scr, hex M8 X 1.25 Full Thd	2
24	39311	Nut, Hex, Std, M08 - 1.25	2
25	83325	Frame Wldt, V-Mop	2
26	83332	Spacer, Spring	2
27	80317	Spring, Torsion	1
28	80318	Spring, Torsion	1
29	87816	Spring, Extension	1
30	83348	Mop, Dust, Industrial	1
31	384418	Latch	2
32	49697	Screw, pan M4 X 0.7 10	4
33	02850	Nut, hexlocnyln M4 X 0.7	4
34	384419	Keeper	2
35	12323	Scr, pan M4 X 0.7 20	4
36	65441	Spacer	4

TENNANT COMPANY  
P. O. Box 1452  
Minneapolis, MN 55440-1452