



INSTRUCTION BULLETIN

No. 340157
Machine: 6100/6100E
Published: 10-2005
Rev. 03

NOTE: DO NOT DISCARD the Parts List from the Instruction Bulletin. Place the Parts List in the appropriate place in the machine manual for future reference. Retaining the Parts List will make it easier to reorder individual parts and will save the cost of ordering an entire kit.

NOTE: Numbers in parenthesis () are reference numbers for parts listed in Bill of Materials.

Installation instructions for kit numbers 83207 and 83209

SYNOPSIS:

This kit contains the parts needed to install a warning light kit on 6100/6100E sweepers.
Please follow step-by-step instructions.

SPECIAL TOOLS / CONSIDERATIONS: NONE

(Estimated time to complete: 1 hour)

PREPARATION: BOTH KITS

1. Park the machine on a clean level surface.
2. Turn off the machine, remove the key, and set the parking brake.

FOR SAFETY: Before leaving or servicing machine, stop on level surface, set parking brake, turn off machine, and remove key.

3. Disconnect battery cables from batteries.



WARNING: Always disconnect battery cables from machine before working on electrical components.

INSTALLATION: 83207

1. Use two screws (6), two washers (5), and two hex nuts (7) to mount the pedestal (4) to rear left corner of machine. Refer to Fig. 1.
2. Insert the grommet (2) into the hole in the pedestal (4). Refer to Fig. 1.
3. Carefully guide the wires from the warning light (1) down through grommet (2) in the pedestal (4) and use hardware supplied with the warning light to mount the warning light to the pedestal. Refer to Fig. 1.

4. Connect the warning/backup harness (8) to the main wire harness and the warning light. Refer to Fig. 1, Fig. 3, and Fig. 4.
5. Open circuit breaker panel. Install circuit breaker (11) and circuit breaker boot (12) into circuit breaker panel. Refer to Fig. 1.
6. Insert the warning/backup harness (8) into the duct (9) and stick the duct to the pedestal (4). Refer to Fig. 1.
7. Connect the main wire harness to the circuit breaker (11). Refer to Fig. 1.
8. Remove plug from warning light switch position. Install the switch (3) into the control panel. Refer to Fig. 1 and Fig. 5.
9. Plug the cable from the switch (3) into the main wire harness. Refer to Fig. 1 and Fig. 5.
10. Use four screws (6), four washers (5), and four hex nuts (7) to mount the light guard (10) onto the pedestal (4). Refer to Fig. 1.
11. Reconnect the battery cables to the batteries.
12. Start machine. Check warning light for proper operation.

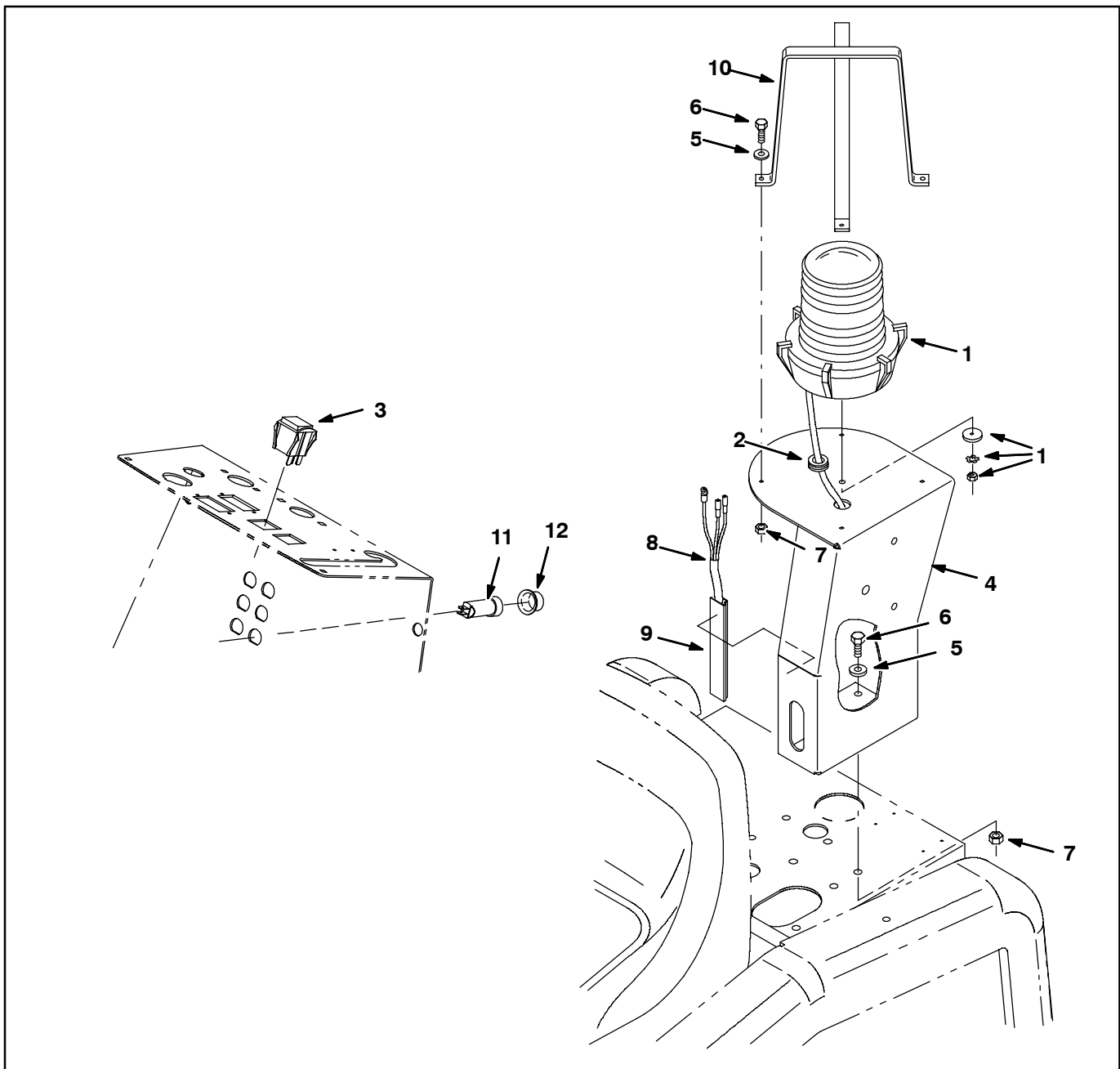


FIG. 1-Light Kit, Flsh, Ped, CI [6100]-83207

INSTALLATION: 83209:

NOTE: If machine is not equipped with vacuum wand option, refer to previous instructions to mount the warning light to the pedestal.

1. Insert the grommet (13) into the hole in the mounting bracket (6). Refer to Fig. 2.
2. Carefully guide the wires from the warning light (1) through the grommet (13) in the mounting bracket (6) and use hardware supplied with the warning light to mount the warning light to mounting bracket. Refer to Fig. 2.
3. Use two screws (7), two hex nuts (8), and two washers (12) to mount the mounting bracket (6) to left corner of vacuum box assembly. Refer to Fig. 2.
4. Connect the warning/backup harness (9) to the main wire harness. Refer to Fig. 2, Fig. 3, and Fig. 4.
5. Open circuit breaker panel. Install the circuit breaker (2) and circuit breaker boot (3) into the circuit breaker panel. Refer to Fig. 2.

6. Connect the main wire harness to the circuit breaker (2). Refer to Fig. 2.
7. Remove plug from warning light switch position. Install the switch (4) into the control panel. Refer to Fig. 2 and Fig. 4.
8. Connect the main wire harness to the switch (4). Refer to Fig. 2 and Fig. 5.
9. Close the circuit breaker panel.
10. Use four screws (7), four washers (12), and four hex nuts (8) to mount the light guard (11) onto the mounting bracket (6). Refer to Fig. 2.
11. Reconnect the battery cables to the batteries.
12. Start machine. Check warning light for proper operation.

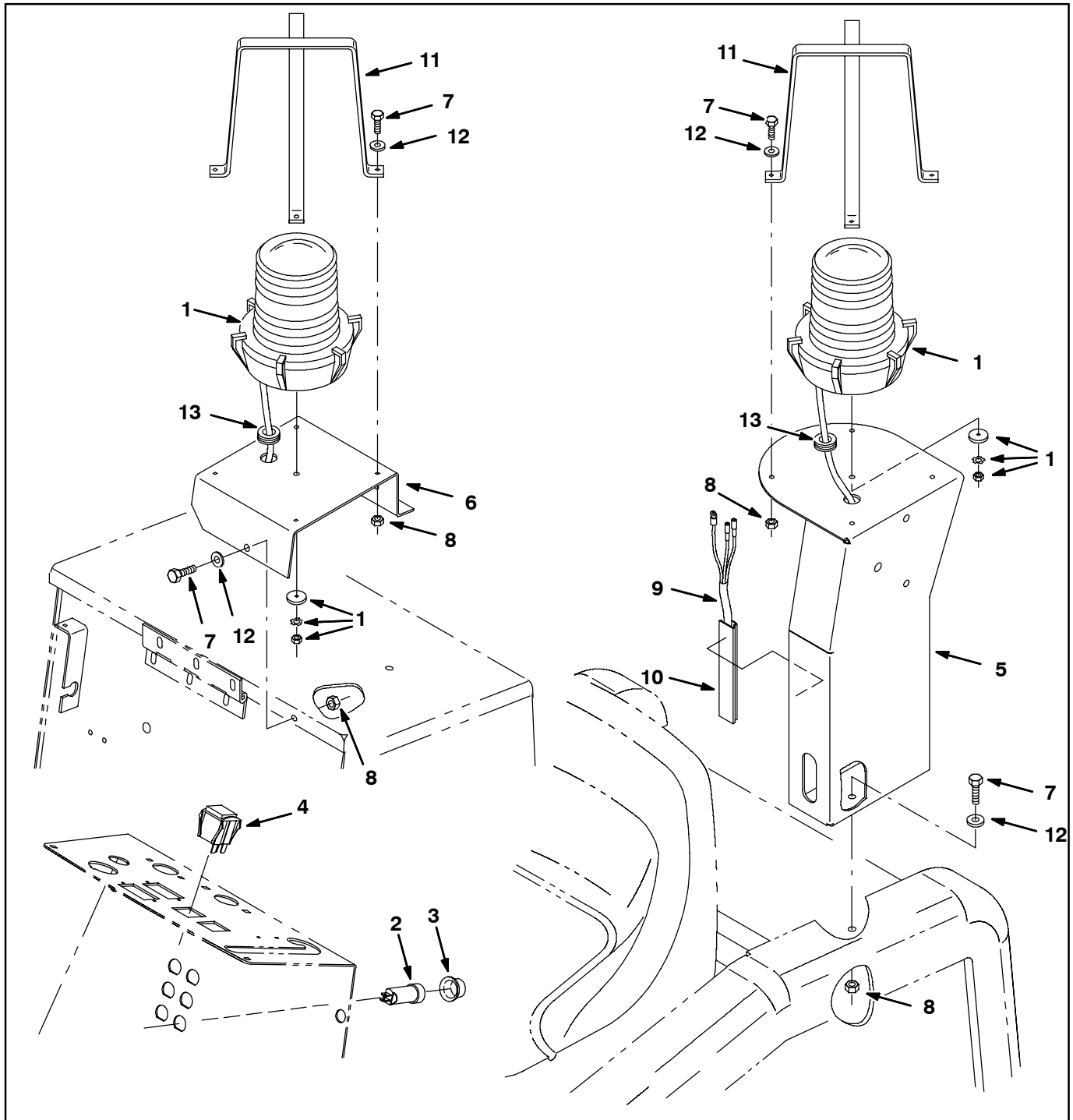


FIG. 2-Light Kit, Flsh, CI [6100E]-83209

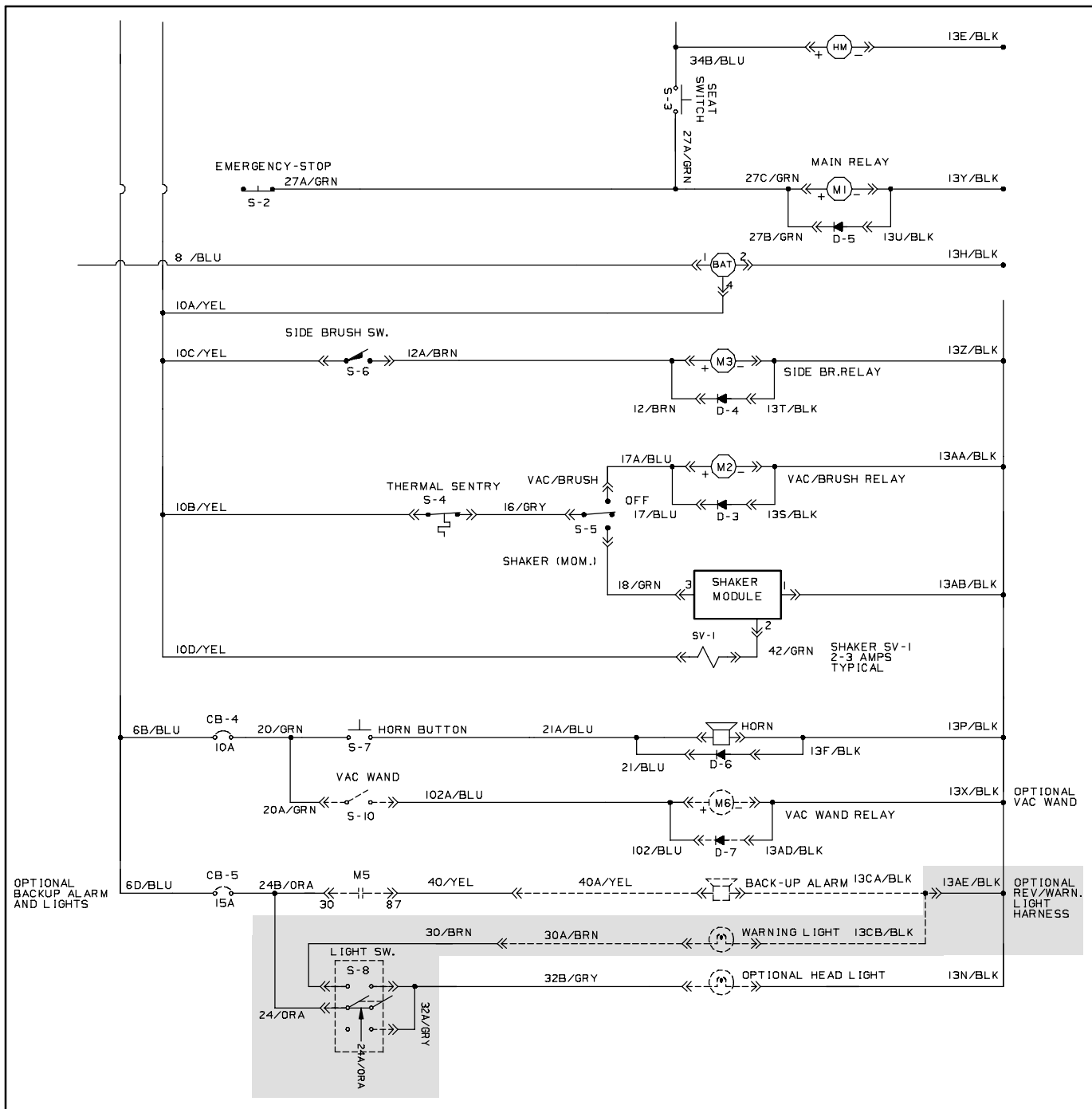


FIG. 3

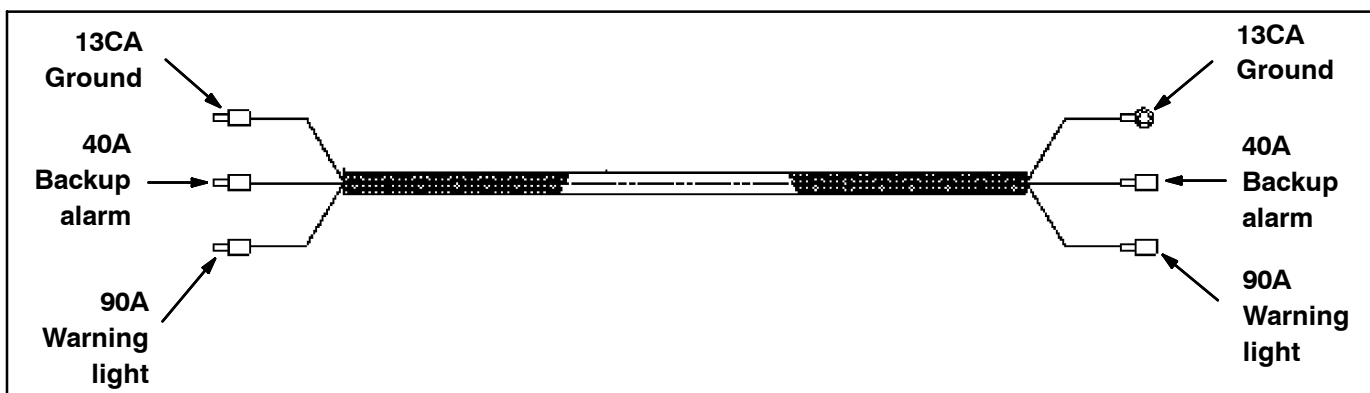


FIG. 4

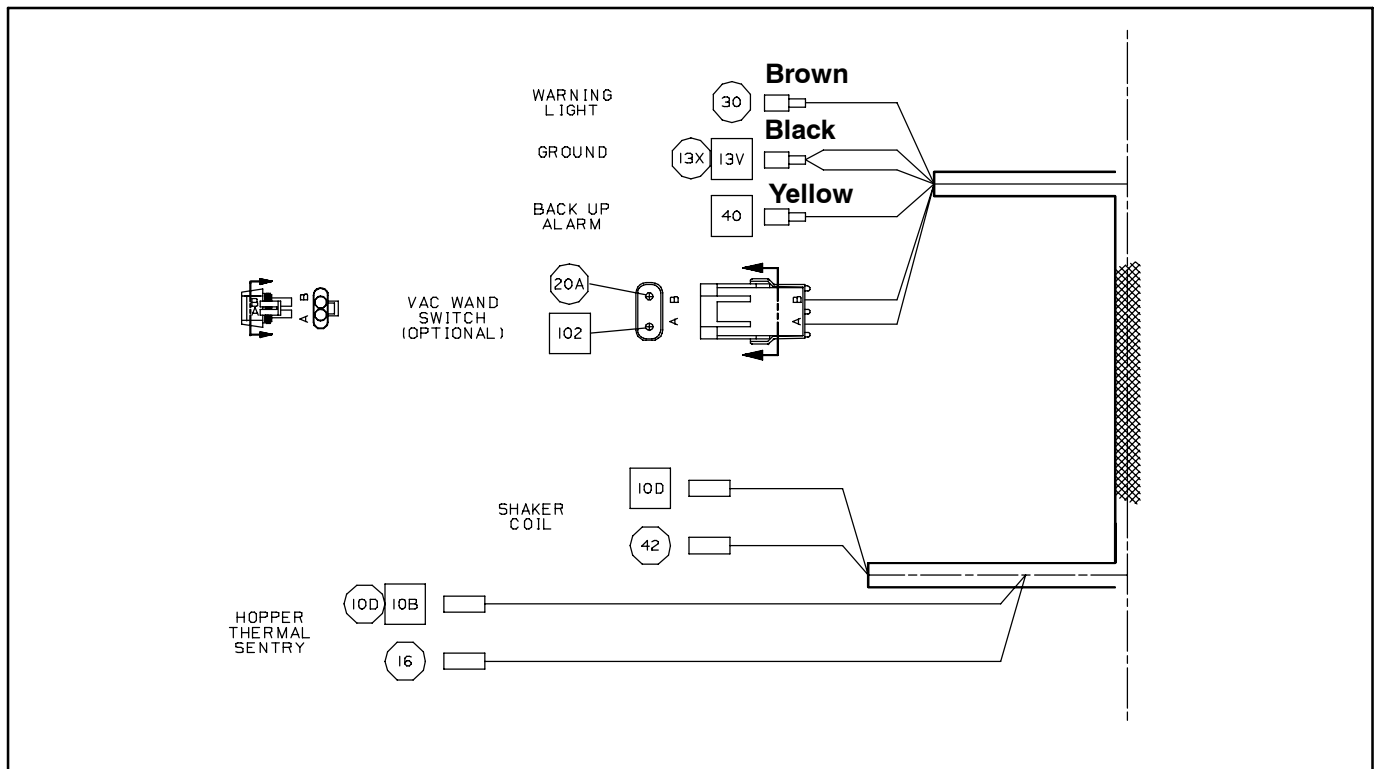


FIG. 5

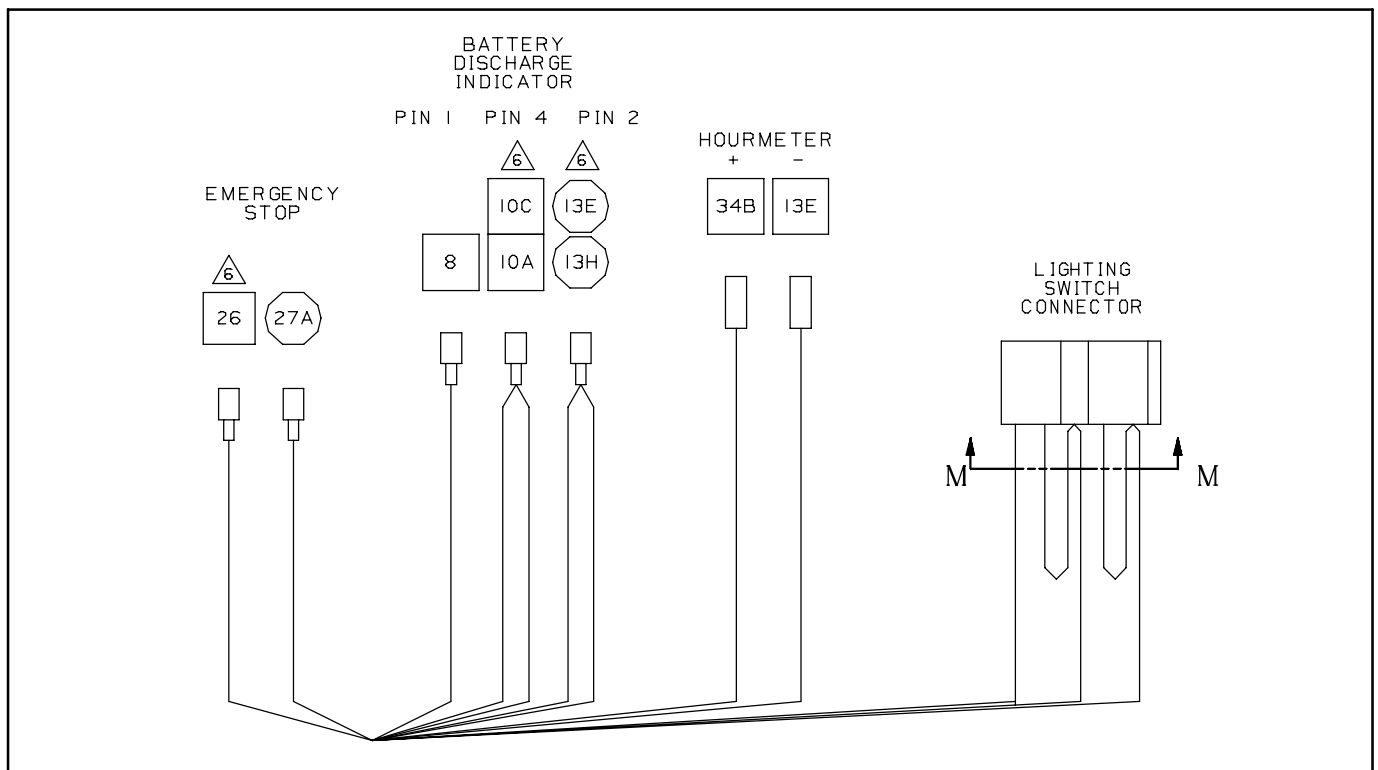


FIG. 6

Bill of Materials for Light Kit, Flsh, Ped, CI [6100]-83207

Ref.	Tennant Part No.	Description	Qty.
▽	83207	Light Kit, Flsh, Ped, CI [6100]	1
▲	1 83160	Light, Flsh, 12VDC, Amb, Rwk 82198	1
▲	2 10632-2	Grommet, Rbr, 0.62ID F/0.9H, .12 MATL	1
▲	3 360520	Switch, Rocker, 36VDC 16A SPDT On/Of/On	1
▲	4 384400	Pedestal, Mtg, Light, Flsh	1
▲	5 39349	Washer, Flat, 0.31 SAE	7
▲	6 16375	Screw, Hex, M8 X 1.25 X 16, 8.8	7
▲	7 07791	Nut, Hex, Flng, M8 X 1.25	7
▲	8 81934	Harness, Warning/Backup, 12VDC	1
▲	9 72114	Duct, Vyl, 0.40 X 0.75 .25D, 06.0L	1
▲	10 45272	Guard Wldt, Light, Revl/Flsh	1
▲	11 57803	Circuitbreaker, 15.0A, Resettable	1
▲	12 57751	Boot, Dome, .72ID .72L, Clear	1

Bill of Materials for Light Kit, Flsh, CI [6100E]-83209

Ref.	Tennant Part No.	Description	Qty.
▽	83209	Light Kit, Flsh, CI [6100E]	1
▲	1 83159	Light, Flsh, 36VDC, Amb, Rwk 60374	1
▲	2 57803	Circuitbreaker, 15.0A, Resettable	1
▲	3 57751	Boot, Dome, .72ID .72L, Clear	1
▲	4 360520	Switch, Rocker, 36VDC 16A SPDT On/Of/On	1
▲	5 83530	Pedestal, Flsh Light/ Alarm Backup	1
▲	6 83531	Bracket, Flsh Light/ Alarm Backup	1
▲	7 16735	Screw, Hex, M8 X 1.25 X 16, 8.8	2
▲	8 07791	Nut, Hex, Flng, M8 X 1.25	2
▲	9 81946	Harness, Warning/Backup, 36VDC	1
▲	10 72114	Duct, Vyl, 0.40 X 0.75 .25D, 06.0L	1
▲	11 45272	Guard Wldt, Light, Revl/Flsh	1
▲	12 39349	Washer, Flat, 0.31 SAE	6
▲	13 10632-2	Grommet, Rbr, 0.62ID F/0.9H, .12 MATL	1

TENNANT COMPANY
P. O. Box 1452
Minneapolis, MN 55440-1452