



INSTRUCTION BULLETIN

No. 340149
Machine: 6500/6550
Published: 03-2007
Rev. 08

NOTE: DO NOT DISCARD the Parts List from the Instruction Bulletin. Place the Parts List in the appropriate place in your machine manual for future reference. Retaining the Parts List will make it easier to reorder individual parts and will save you the cost of ordering an entire kit.

NOTE: Numbers in parenthesis () are reference numbers for parts listed in Bill of Materials.

Installation instructions for kit numbers 375209 and 375249

SYNOPSIS:

This kit contains the parts needed to replace the 94 or 98 pleat panel filters on 6500/6550 sweepers. Please follow step-by-step instructions.

SPECIAL TOOLS / CONSIDERATIONS: Utility knife or small cutting tool.

PREPARATION:

1. Park the machine on a clean level surface, turn off the machine, engage the parking brake, and remove the key.

FOR SAFETY: Before leaving or servicing machine, stop on level surface, turn off machine, engage the parking brake, and remove key.

INSTALLATION:

1. Open the hopper cover. Remove the four knobs, washers and the two retaining brackets from the filter cover. (Refer to FIG. 1)
2. Lift the dust filter cover and disconnect the filter shaker wire. (Refer to FIG. 2)
3. Lift the dust filter element assembly out from the hopper insert. (Refer to FIG. 3)
4. Cut cable ties securing shaker plate to dust filter, and remove the filter shaker plate from the dust filter element. (Refer to FIG. 4)
5. Discard the dust filter element.
6. Remove the shipping tab from the new dust filter element (1). Set the shipping tab aside. (Refer to FIG. 5)

NOTE: Model 6500 machines with new plastic hoppers are not equipped with filter covers.

7. Place the filter shaker plate onto the new dust filter element (1). Be sure the lip on the filter shaker plate is fastened over the lip on the dust filter element.
8. Insert the pin from the shaker into the hole on the dust filter element comb. (Refer to FIG. 6)
9. Use the shipping tab, removed earlier, to check the solenoid gap. Use the end of the tab labeled **solenoid gap** to set the gap. If needed, loosen the four screws and slide the solenoid to close the gap. Retighten the screws.

NOTE: If the shipping tab is unavailable, set the solenoid gap at 4.750 mm (0.187 in).

10. Use four cable ties (2) to secure the filter shaker plate in place on the dust filter. Place the dust filter element assembly into the hopper insert and reconnect the filter shaker wire. (Refer to FIG. 7 and FIG. 8)
11. Center the dust filter cover over the element, then push the cover back until the rear vacuum fan seal is pressed against the hopper insert.
12. Fasten the dust filter cover onto the element with the retainer brackets, washers, and knobs. (Refer to FIG. 1).
13. Close the hopper cover.



Fig. 1

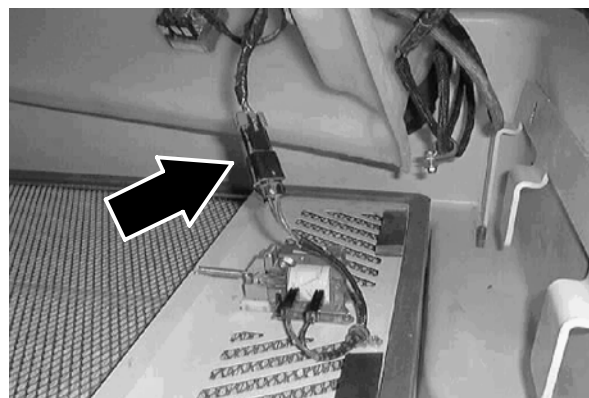


Fig. 2



Fig. 3

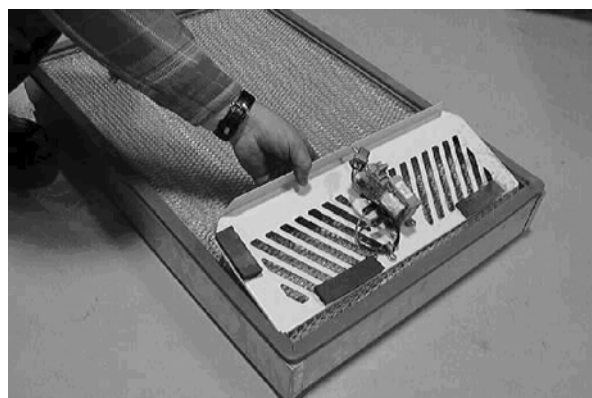


Fig. 4

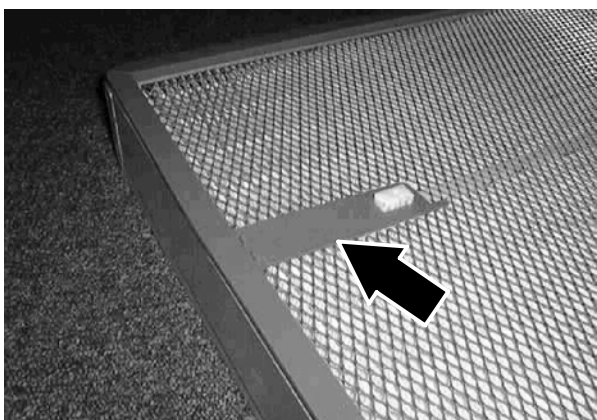


Fig. 5

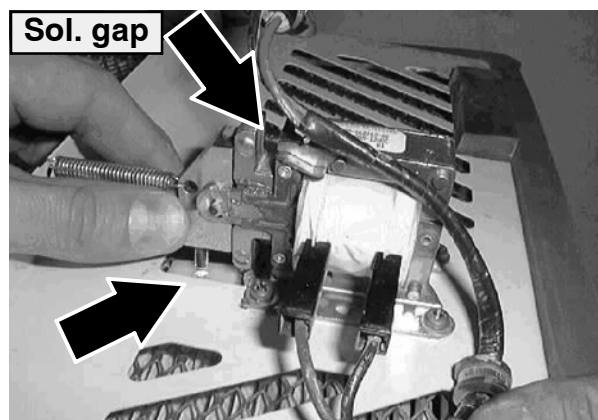


Fig. 6

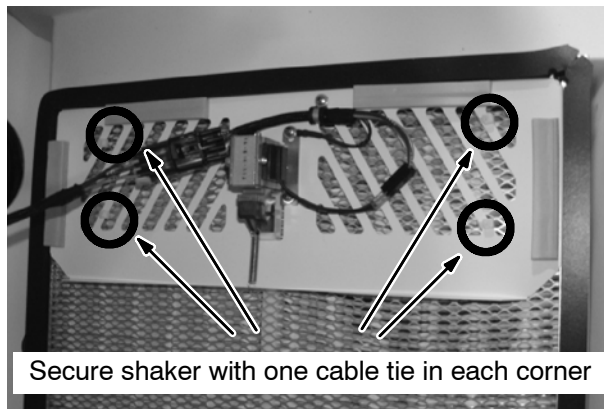


Fig. 7

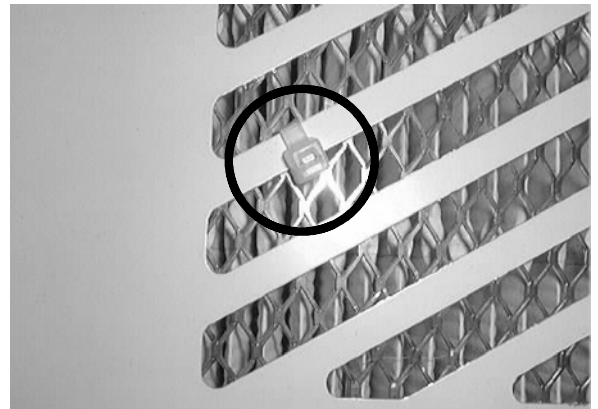


Fig. 8

BILL OF MATERIALS FOR PANEL FILTER KIT 375209

Ref.	TENNANT Part No.	Description	Qty.
1	1037208	Filter, Panl, Dust, 4.2 X 20.0 X 30.0	1
2	49266	Tie, Cable, Nyl, 07.3L .19W 1.8 Max D	4

BILL OF MATERIALS FOR PANEL FILTER KIT 375249

Ref.	TENNANT Part No.	Description	Qty.
1	1037211	Filter, Panl, Dust, 4.1 X 20.0 X 30.0	1
2	49266	Tie, Cable, Nyl, 07.3L .19W 1.8 Max D	4

TENNANT COMPANY
P. O. Box 1452
Minneapolis, MN 55440-1452