



INSTRUCTION BULLETIN

No. 340142
Machine: 7200
Published: 06-2006
Rev: 01

NOTE: DO NOT DISCARD the Parts List from the Instruction Bulletin. Place the Parts List in the appropriate place in the machine manual for future reference. Retaining the Parts List will make it easier to reorder individual parts and will save the cost of ordering an entire kit.

NOTE: Numbers in parenthesis () are reference numbers for parts listed in Bill of Materials.

Installation Instructions for Kit number 385695

SYNOPSIS:

This kit contains the parts needed to install a power wand kit on the 7200 equipped with a 28" scrub head.

Please follow step-by-step instructions.

SPECIAL TOOLS / CONSIDERATIONS:

(Estimated time to complete: 3 hours)

PREPARATION:

1. Start the machine and lower the rear squeegee. Turn off the machine.
2. Drain the solution and recovery tanks.

FOR SAFETY: Before leaving or servicing machine, stop on level surface and set parking brake. Then turn off machine and remove key.

3. Disconnect battery cables from machine.



WARNING: Always disconnect battery cables from machine before working on electrical components.

4. Open the electrical control panel in operator's compartment.

INSTALLATION: (Refer to FIG. 1 through 9)

1. Remove two screws and pivot electrical panel out for access.
2. Install the switch (3), switch boot (33), circuit breaker (1), and circuit breaker boot (2) into the electrical panel. (Refer to FIG. 1)
3. Connect the switch (3) to wires 94/PUR, 13G/BLK, 9A/YEL, and 9/YEL. (Refer to FIG. 9)
4. Connect the circuit breaker (1) to wires 9A/YEL and 6D/BLU. (Refer to FIG. 9)
5. Close the electrical panel. (Refer to FIG. 1)
6. Use the hole dimensions in FIG. 2 to mark and drill the power wand bag (6) mount holes in the top of the tank cover. (Refer to FIG. 2)
7. Install the power wand bag (6) onto the top of the tank cover using the four plastic rivets (7). (Refer to FIG. 5)

8. Use the dimensions in Fig. 3 to mark and drill two 0.437" holes in the front bumper for tray installation. (Refer to FIG. 3 and 5)
9. Install the brush tray (16) on the left side of the front bumper using two screws (17), fender washers (19), and nuts (18). Hand tighten tight. (Refer to FIG. 3 and 5)
10. Drill two 0.375 holes thru two material thickness of the front shroud per dimensions. (Refer to FIG. 4)
11. Install the larger part of the flex draw latch (13) onto the bracket (8) using two screws (15). Hand tighten tight. (Refer to FIG. 3 and 5)
12. Install the smaller part of the flex draw latch (13) onto the bracket (9) using one flat head screw (14). Hand tighten tight. (Refer to FIG. 3 and 5)
13. Install the second bracket (9) onto the first bracket (8) using two screws (10), washers (12), and nuts (11). Hand tighten tight. Mount assembled bracket to front of shroud using two screws (36), washers (12) and nuts (11). (Refer to FIG. 3 and 5)
14. Install the 90° fitting (24) into the tee fitting (23). (Refer to FIG. 6)
15. Install the shorter vinyl hose (30) onto the 90° fitting (24). Install and tighten one worm clamp (31). (Refer to FIG. 6)
16. Locate the solution drain line under the solution tank. Cut the hose a few inches from the tank fitting. Install the new tee fitting (23) and two worm drive clamps (32) between the ends of the cut hose. Tighten the clamps. (Refer to FIG. 6)
17. Install the longer vinyl hose (29) and one clamp (31) onto the outlet port on the new pump (20). (Refer to FIG. 6)
18. Install the pump (20) into the machine using the two screws (22) and nuts (21). Route the vinyl hose (29) through the hose hole in the frame. (Refer to FIG. 6)
19. Install one clamp (31) and the open end of the shorter vinyl hose (30) onto the inlet port of the new pump (2). (Refer to FIG. 6)
20. Locate the electrical connector in the main harness with the wires 13V/BLK and 94/PUR. Plug the new pump (20) into the connector. (Refer to FIG. 6 and 9)
21. Install the bulkhead fitting (26) onto the mount bracket (25). (Refer to FIG. 6)
22. Install the small straight fitting (28) into the bulkhead fitting (26). Hand tighten tight. (Refer to FIG. 6)
23. Install the brass fitting (27) into the bulkhead fitting (26). Hand tighten tight. (Refer to FIG. 6)
24. Install the open end of the longer vinyl hose (29) and one clamp (31) onto the straight fitting (28). (Refer to FIG. 6)
25. Install the mount bracket (25) onto the machine frame. (Refer to FIG. 6)
26. Install the power wand hose (4) into the bag (6). (Refer to FIG. 5 and 7)
27. Use the draw latch (13) to install the power wand assembly (34) on the side of the machine. (Refer to FIG. 5 and 8)

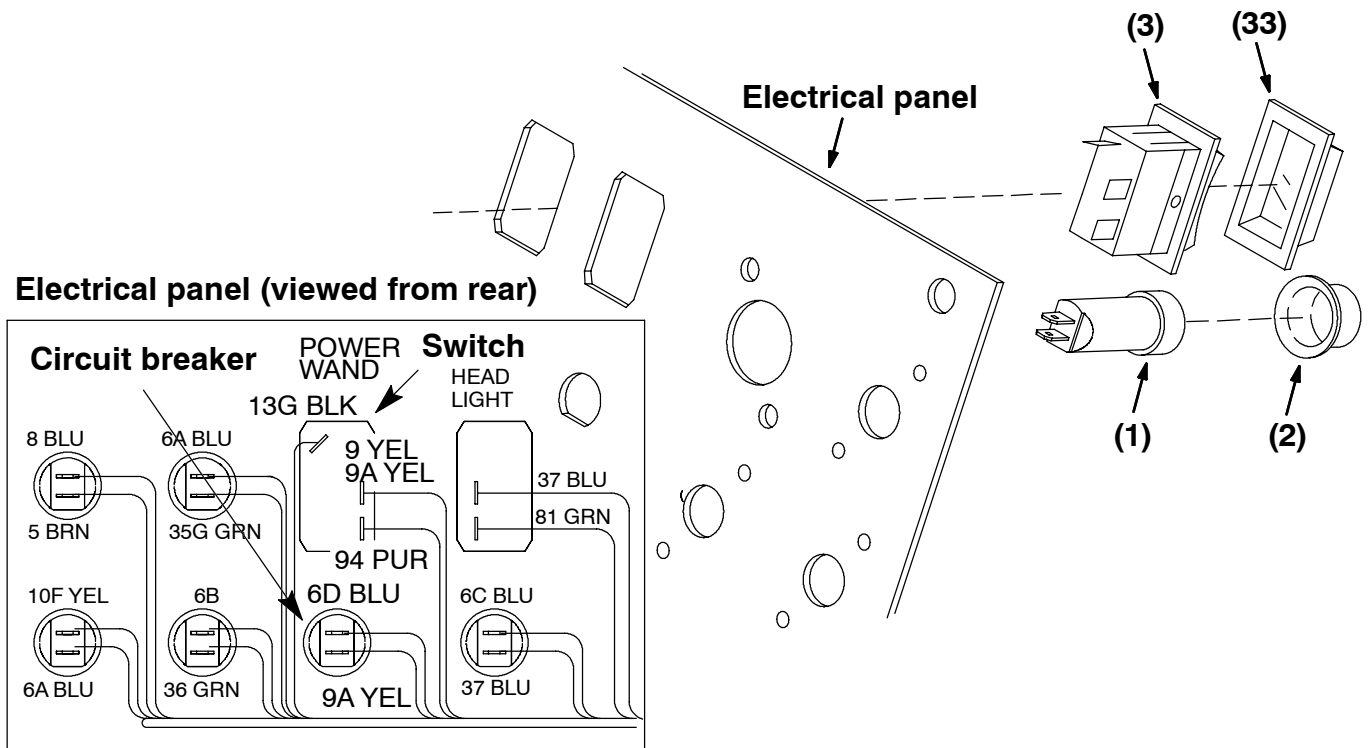


FIG. 1 - Switch And Circuit Breaker

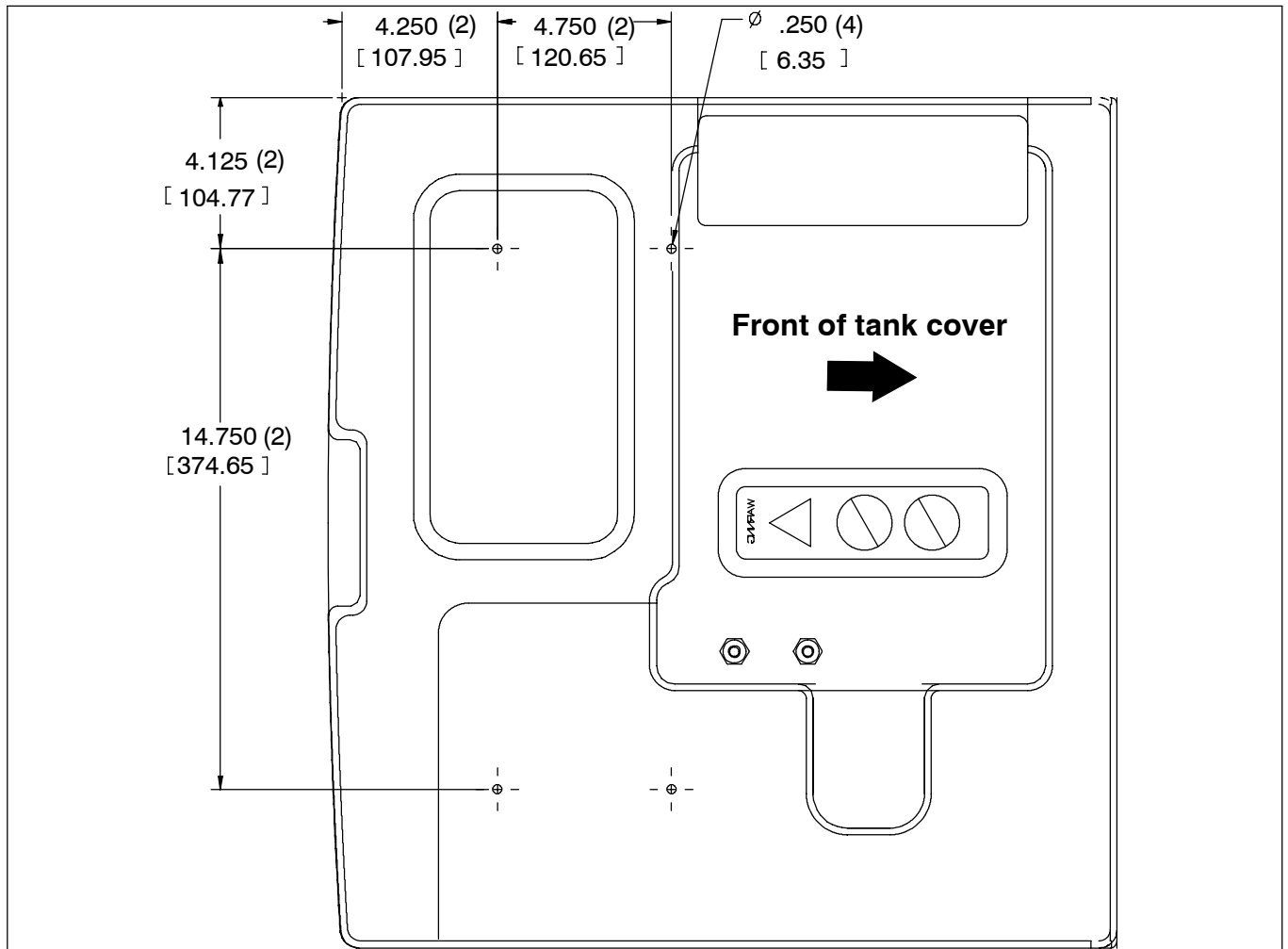


FIG. 2 - Power Wand Bag Mounting Hole Dimensions

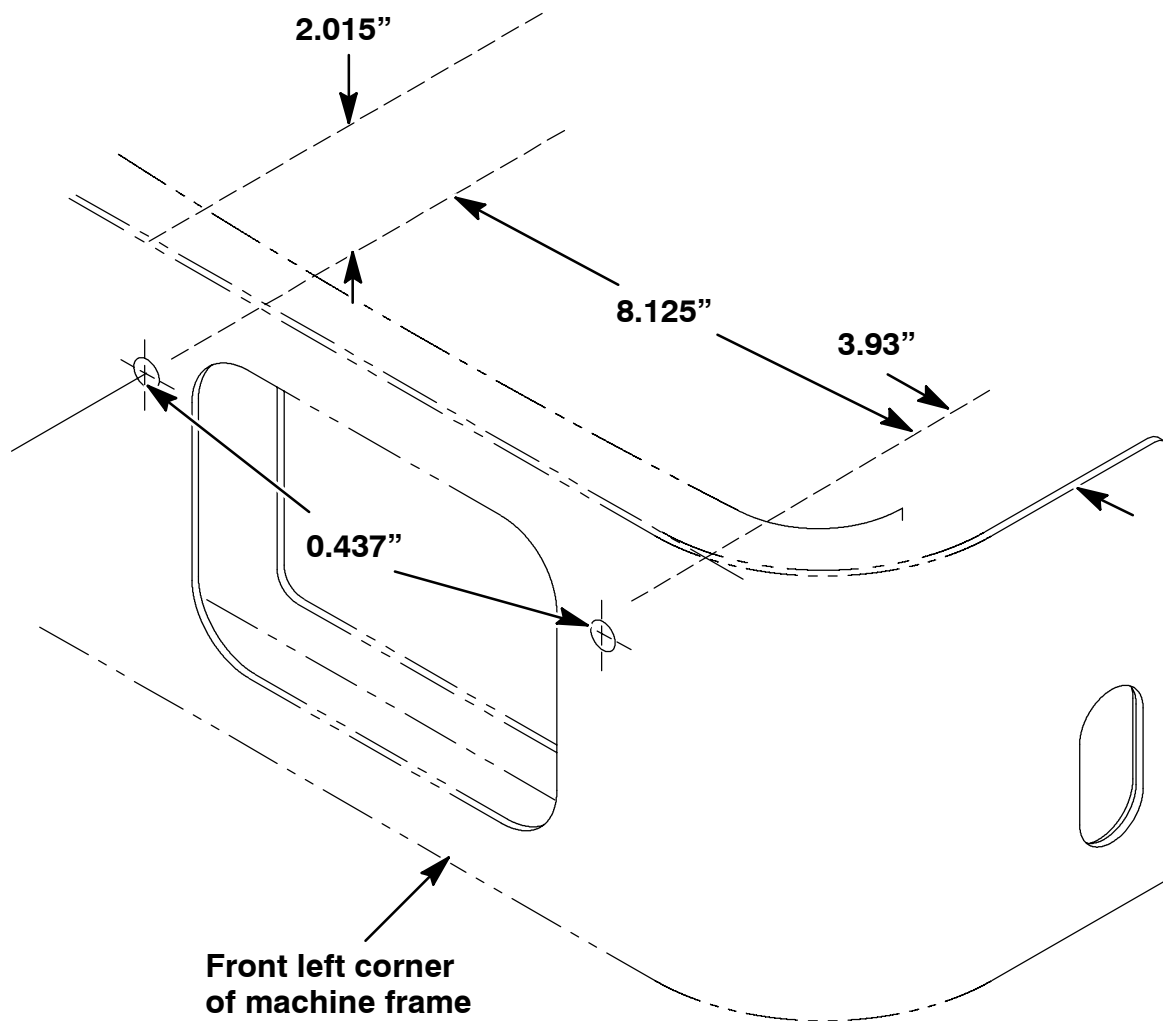


FIG. 3 - Power Wand Tray Mounting Hole Dimensions

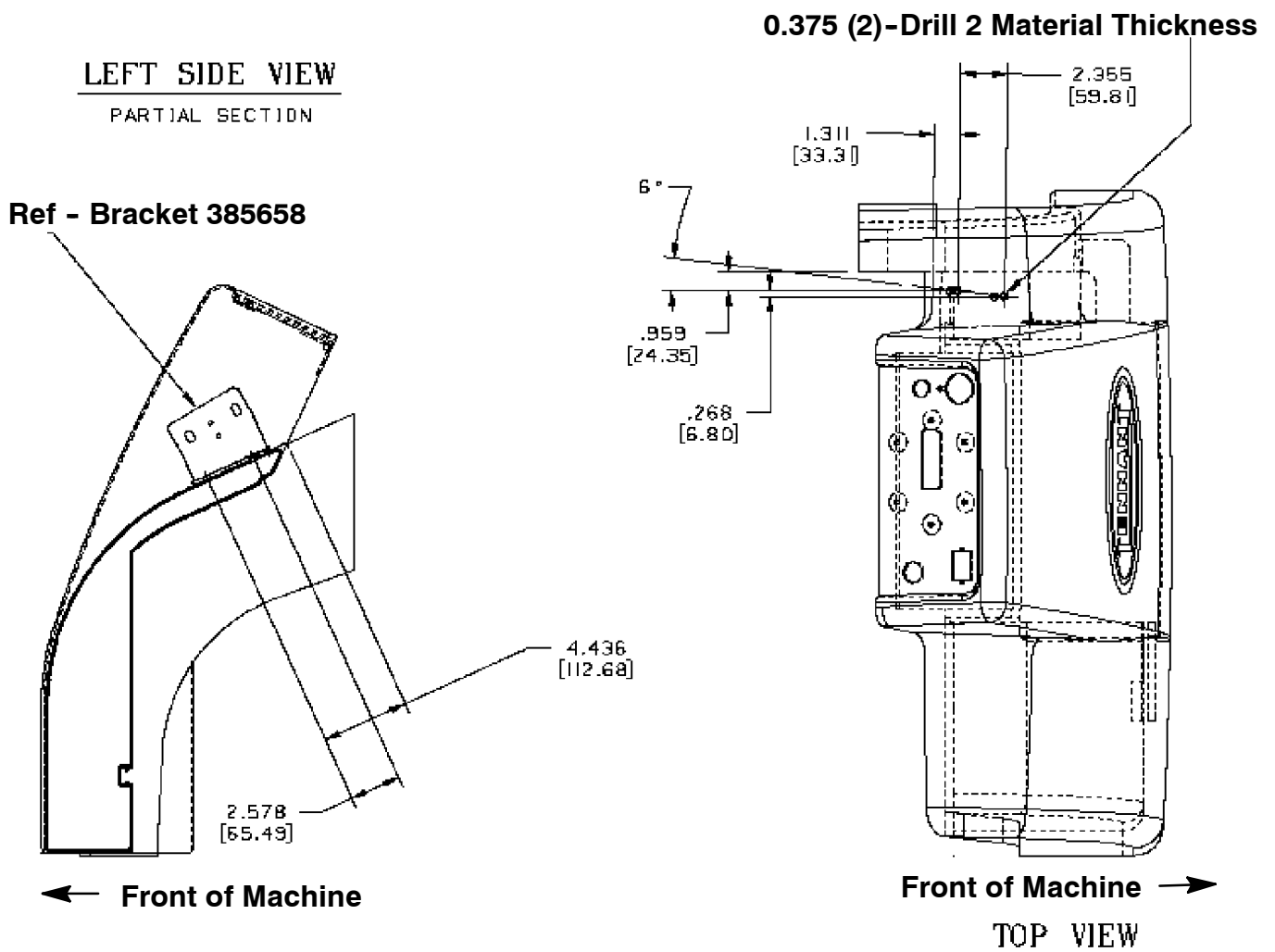


FIG. 4 - Power Wand Assembly Mounting Hole Dimensions

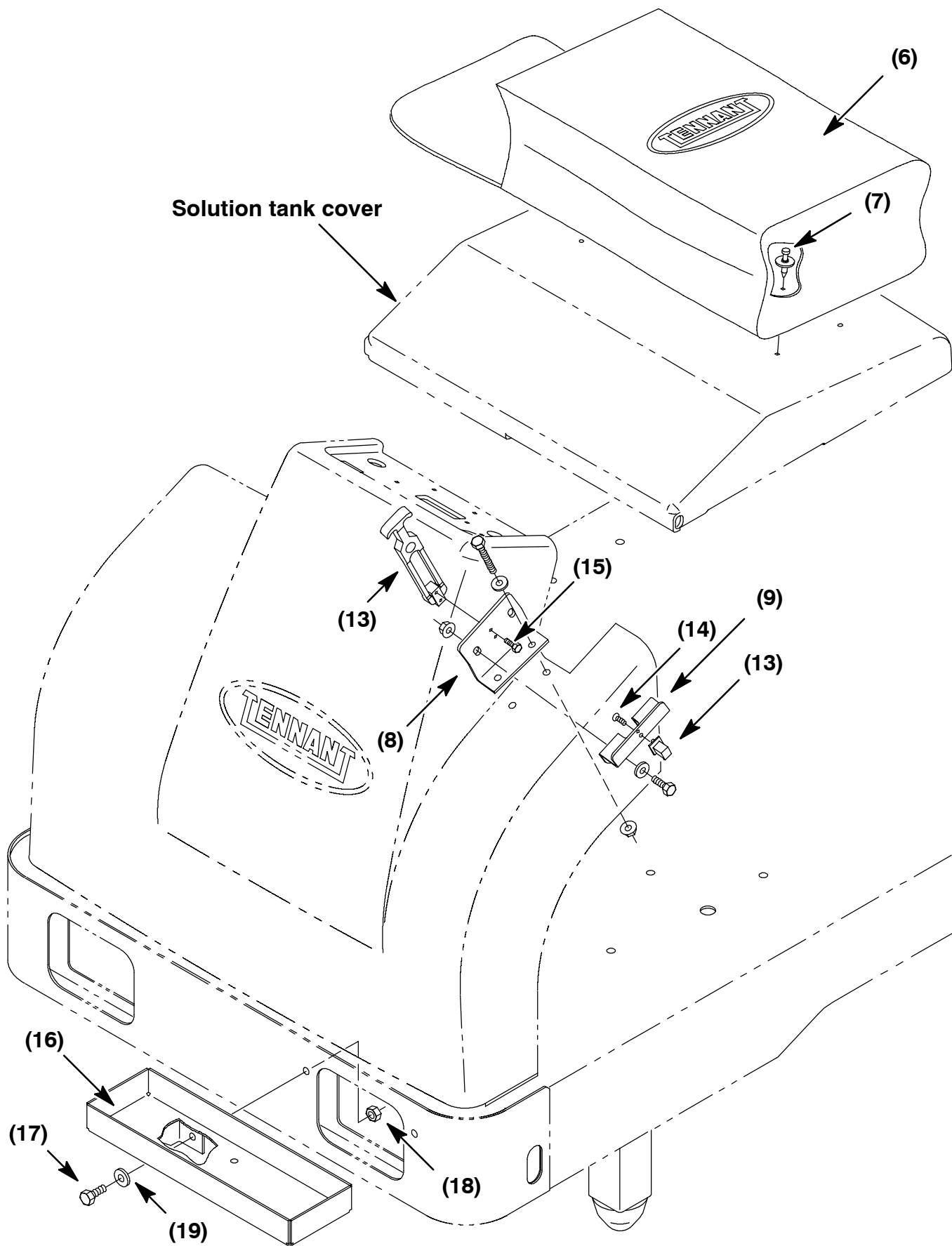


FIG. 5 - Power Wand Mounting Assembly

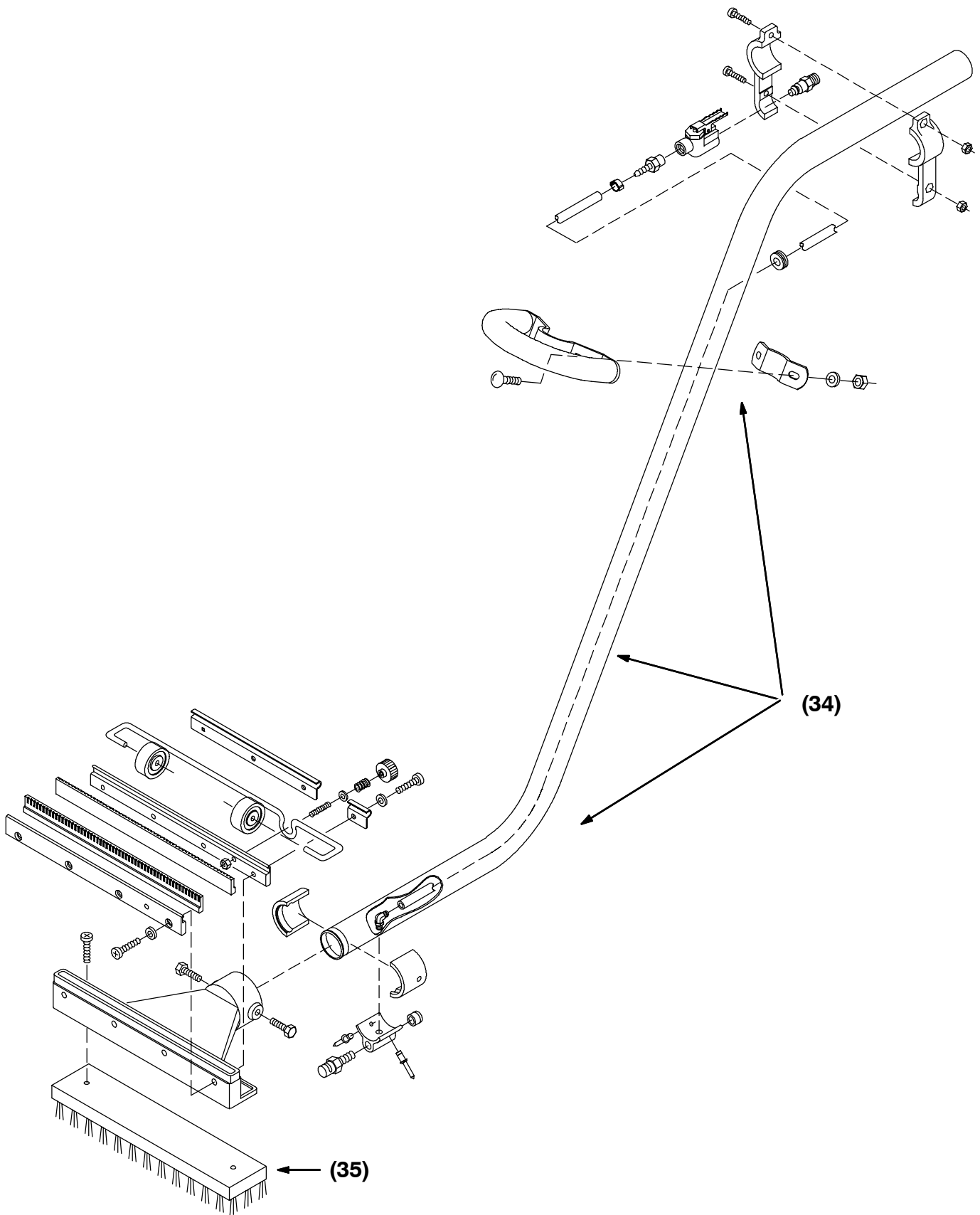


FIG. 8 - Power Wand Assembly

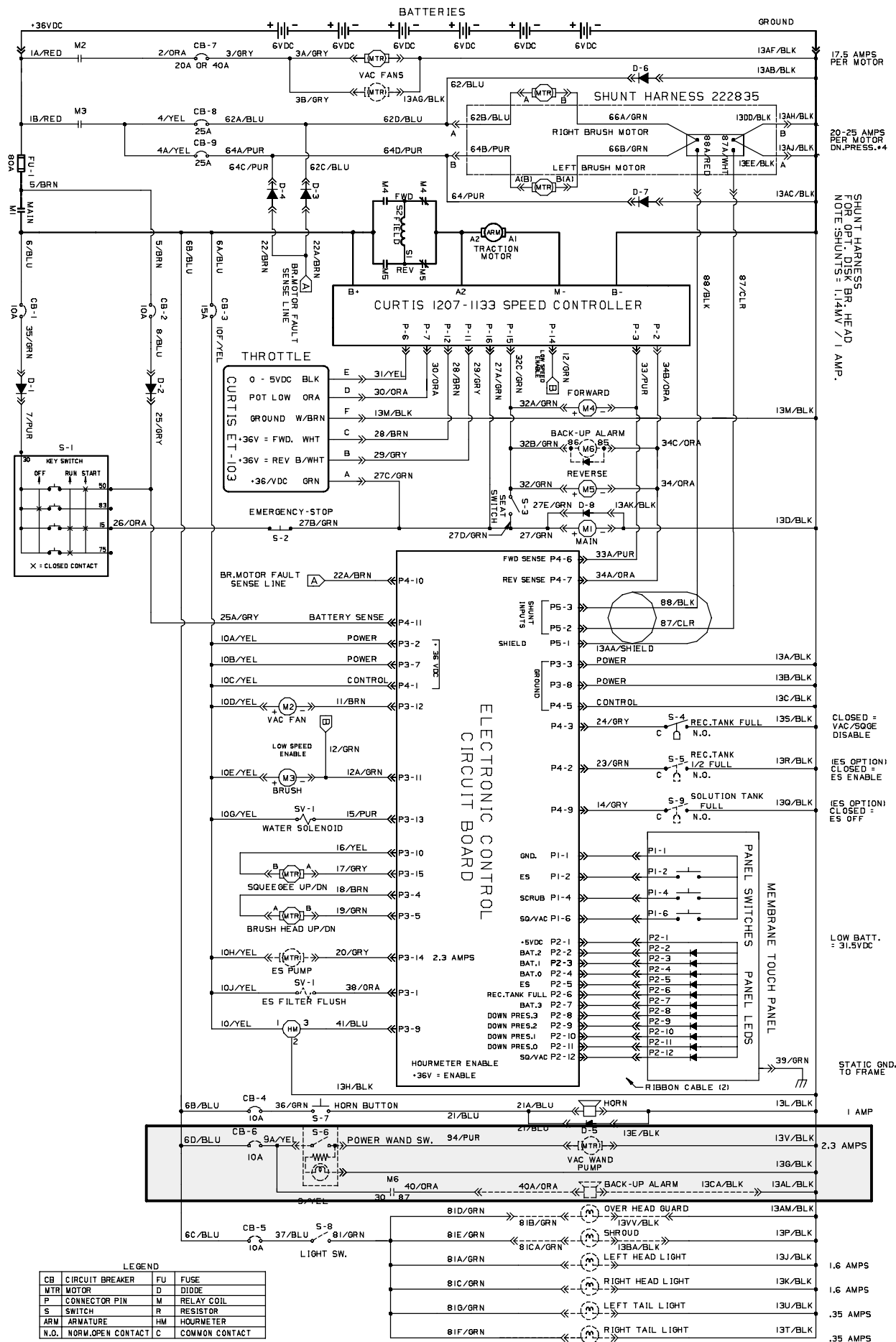


FIG. 9 - Electrical Schematic

BILL OF MATERIALS FOR POWER WAND KIT 223282

Ref.	TENNANT Part No.	Description	Qty.
1	57164	Circuit breaker, 10amp	1
2	57751	Circuit breaker boot	1
3	65557	Rocker switch, SPST, lighted	1
4	65341	Hose and cuff assembly	1
5	12694	Plastic fitting, straight	1
6	65580	Power wand bag	1
7	72968	Plastic rivet	4
8	385658	Power wand bracket	1
9	223490	Power wand bracket	1
10	16931	M8 hex screw, 20mm	2
11	07791	M8 flange nut	4
12	32491	5/16 in. flat washer	4
13	223522	Flexible draw latch	1
14	09120	M5 flat screw, 16mm	1
15	09252	M5 hex screw, 20mm	2
16	385654	Brush tray	1
17	09291	M10 hex screw, 20mm	2
18	08714	M10 loc nut	2
19	01686	38 ss washer	2
20	223496	Water pump, 36 volts	1
21	09739	Nut, Hex, Lock, M5 X 0.80, NL, SS	2
22	09738	Screw, Hex, M5 X 0.8 X 12, SS	2
23	76075	Plastic fitting, tee	1
24	79484	Plastic fitting, 90°	1
25	223521	Mount bracket	1
26	78122	Bulkhead fitting	1
27	65342	Brass fitting, quick connect, female	1
28	49186	Plastic fitting, straight	1
29	223523	Vinyl hose	1
30	223640	Vinyl hose	1
31	43844	Worm drive clamp	4
32	86824	Worm drive clamp	2
33	57807	Rocker switch cover seal	1
34	65340	Wand assembly	1
35	65582	Scrub brush, rectangular	1
36	06957	M8 hex screw, 60mm	2

TENNANT COMPANY
P. O. Box 1452
Minneapolis, MN 55440-1452