



INSTRUCTION BULLETIN

No. 340141
Machine: 6080/3640
Published: 9-99/02
System: SWEEPING

NOTE: DO NOT DISCARD the Parts List from the Instruction Bulletin. Place the Parts List in the appropriate place in your machine manual for future reference. Retaining the Parts List will make it easier to reorder individual parts and will save you the cost of ordering an entire kit.

NOTE: Numbers in parenthesis () are reference numbers for parts listed in Bill of Materials.

Installation instructions for kit number 373137

SYNOPSIS / PROBLEM:

This kit contains the parts needed to install a vacuum wand kit on the model 6080 and 3640 sweepers.

This kit is for machines equipped with the High Air Flow option only.

Please follow step-by-step instructions.

SPECIAL TOOLS / CONSIDERATIONS: Hand drill, .375 inch drill bit

(Estimated time to complete: 1 hour)

INSTALLATION:

(Refer to FIG. 1, 2, 3, and 4)

FOR SAFETY: Before leaving or servicing machine, stop on level surface and set parking brake. Then turn off machine and remove key.

1. Use the dimensions in the appropriate Fig. (2, 3, or 4) to mark and drill the two .375 inch power wand bag (1) mount holes. (Refer to FIG. 2, 3, and 4)
2. Use the two hex screws (3), four flat washers (2), and two nuts (4) to attach the power wand bag (1) to the machine hood. (Refer to FIG. 2, 3, and 4)
3. Thread the hose (6) into the hose cuff (5) and nozzle (7). (Refer to FIG. 1)
4. Position the vacuum wand coupling (8) onto the end of the nozzle (7). (Refer to FIG. 1)
5. Position the vacuum wand tube (9) into the coupling (8). (Refer to FIG. 1)
6. Position the vacuum wand coupling (10) onto the end of the vacuum wand tube (9). (Refer to FIG. 1)
7. Start the machine and use the vacuum wand assembly. Check for proper operation.
8. When the vacuum wand assembly is not in use--remove the tube (9) and couplings (8 and 10) from the nozzle (7) and place all of the parts into the power wand bag (1) on the machine cover.

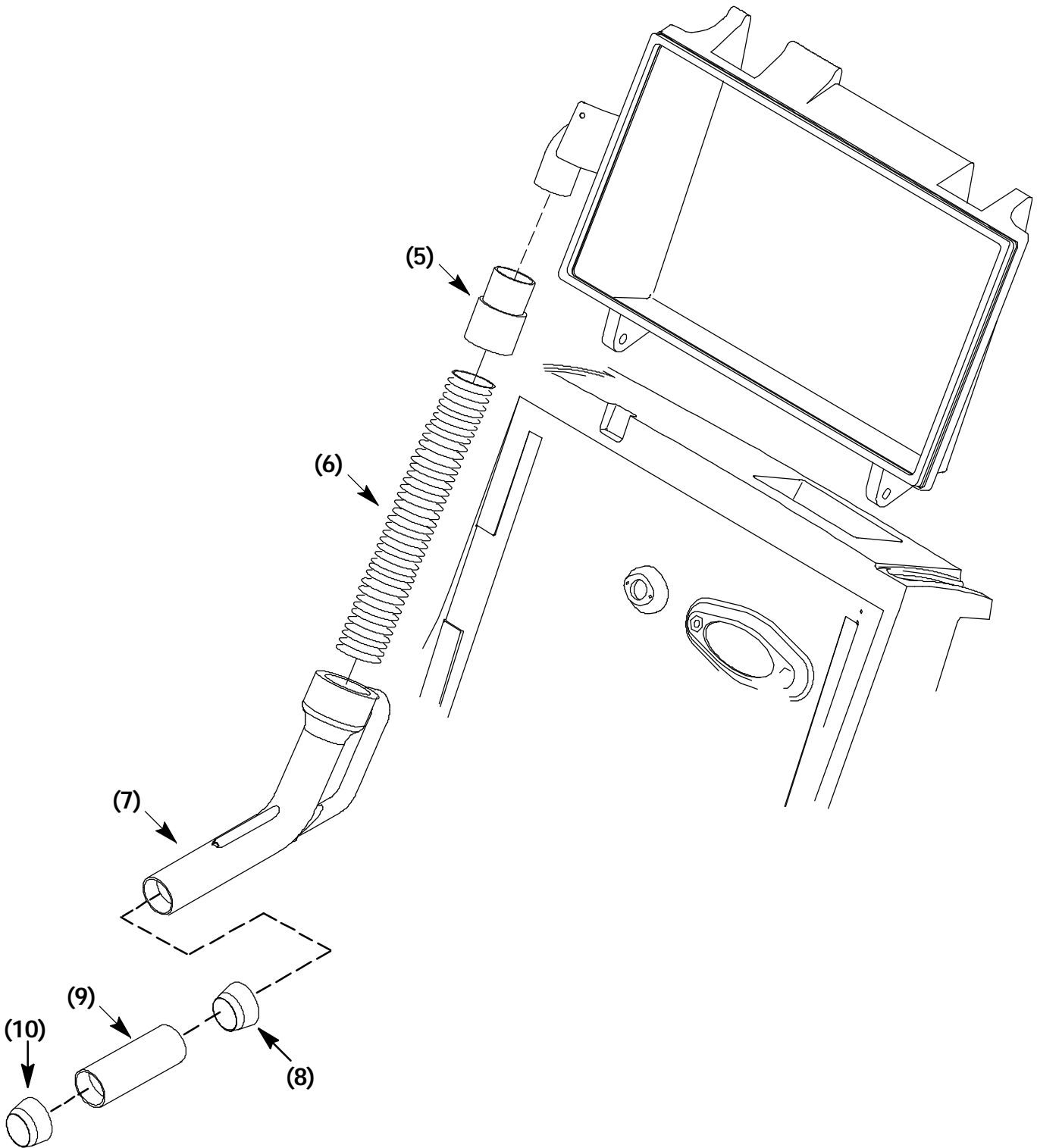


FIG. 1 - Vacuum Wand Assembly

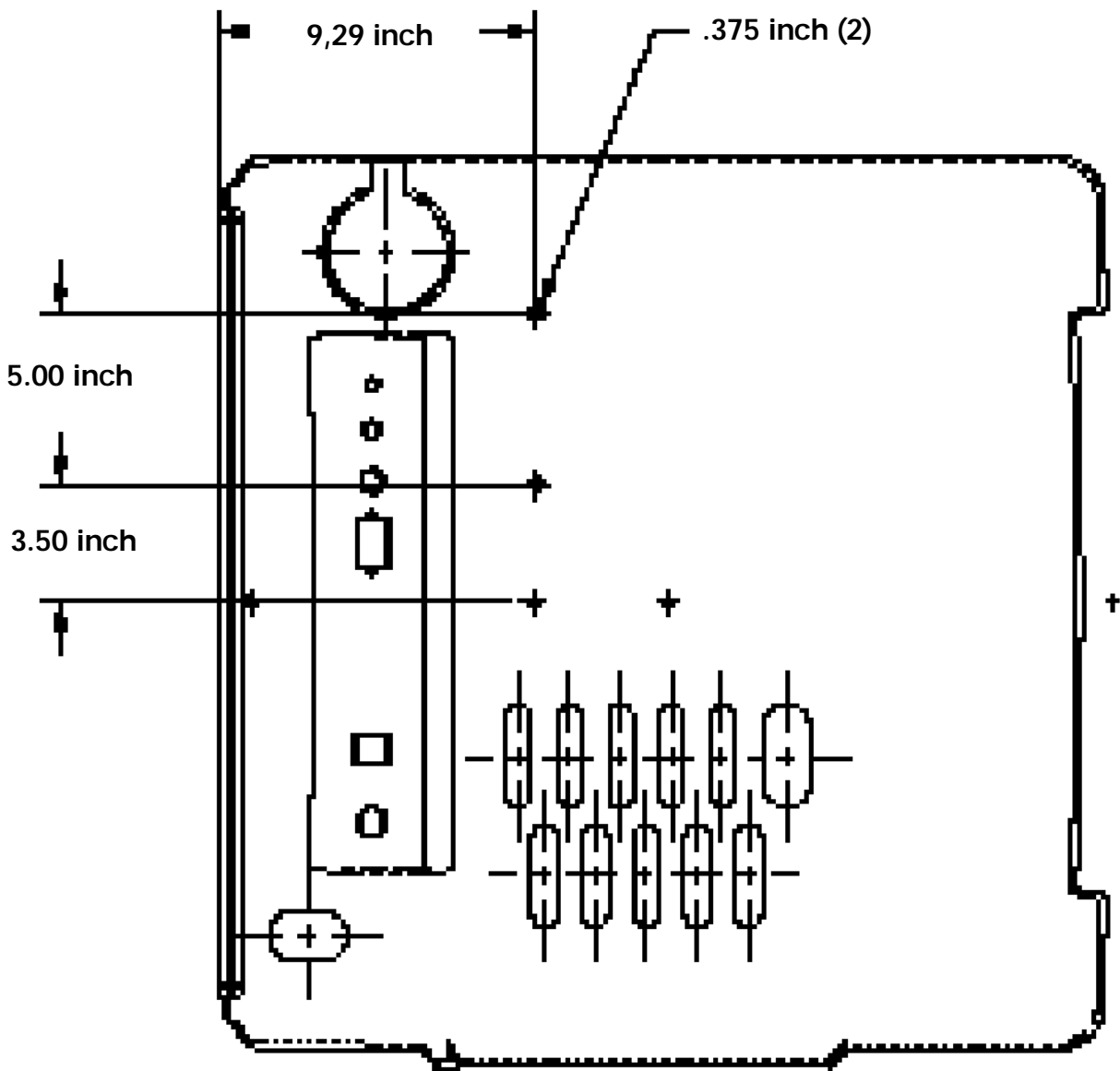


FIG. 3 - Gas Engine Cover (bag mount hole location)

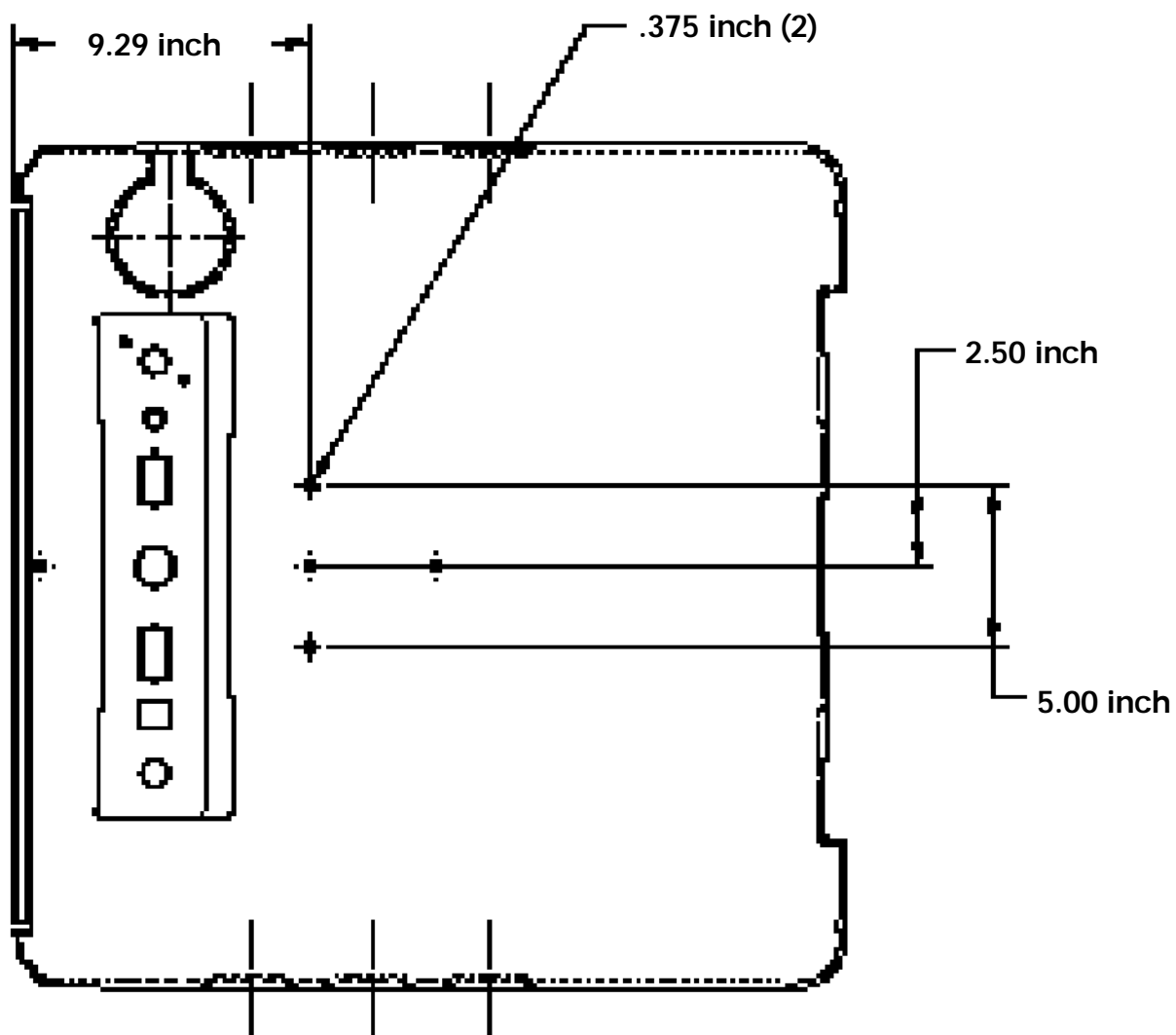


FIG. 4 - E/EE Battery Cover (bag mount hole location)

BILL OF MATERIALS FOR VACUUM WAND KIT 373137

Ref.	TENNANT Part No.	Description	Qty.
1	65580	Power wand bag	1
2	32492	3/8 flat washer	4
3	39277	M8 hex screw, 25mm	2
4	08709	M8 nyloc nut	2
5	83285	Hose cuff	1
6	83289	Flex hose, 24L	1
7	83286	Vacuum wand nozzle	1
8	83287	Vacuum wand coupling	1
9	379204	Vacuum wand tube	1
10	80299	Vacuum wand coupling	1

TENNANT COMPANY
P. O. Box 1452
Minneapolis, MN 55440-1452