



INSTRUCTION BULLETIN

No. 340138
Machine: 8200/8210
Published: 4-98/00
System: SCRUBBING

NOTE: DO NOT DISCARD the Parts List from the Instruction Bulletin. Place the Parts List in the appropriate place in your machine manual for future reference. Retaining the Parts List will make it easier to reorder individual parts and will save you the cost of ordering an entire kit.

NOTE: Numbers in parenthesis () are reference numbers for parts listed in Bill of Materials.

Installation instructions for kit number 365100

SYNOPSIS / PROBLEM:

This kit contains the parts needed to install positive control drain kit on the model 8200/8210 sweeper/scrubber **with the ES option.**

Please follow step-by-step instructions.

SPECIAL TOOLS / CONSIDERATIONS: None

(Estimated time to complete: 1 hour)

INSTALLATION:

(Refer to FIG. 1, 2 and 3)

FOR SAFETY: Before leaving or servicing machine, stop on level surface and set parking brake. Then turn off machine and remove key.

1. Make sure the solution and recovery tanks are empty. (Refer to FIG. 1, 2 and 3)
2. Remove and discard the cap assemblies from the both tank drains. (Refer to FIG. 1)
3. Install the new positive drain cap assemblies onto both tanks. (Refer to FIG. 1)
4. Install the new rear bumper (2) using the LH (4) and RH (3) mount brackets, eight hex screws (5), and eight washers (6). Tighten the hardware to 26 - 43 ft. lb. (Refer to FIG. 2)
5. Use the M4 hex screws (10) to attach the Dust cap (1) chain (9) to the new bumper (2). (Refer to FIG. 1)
6. Check the new positive drain cap assemblies for leaks.

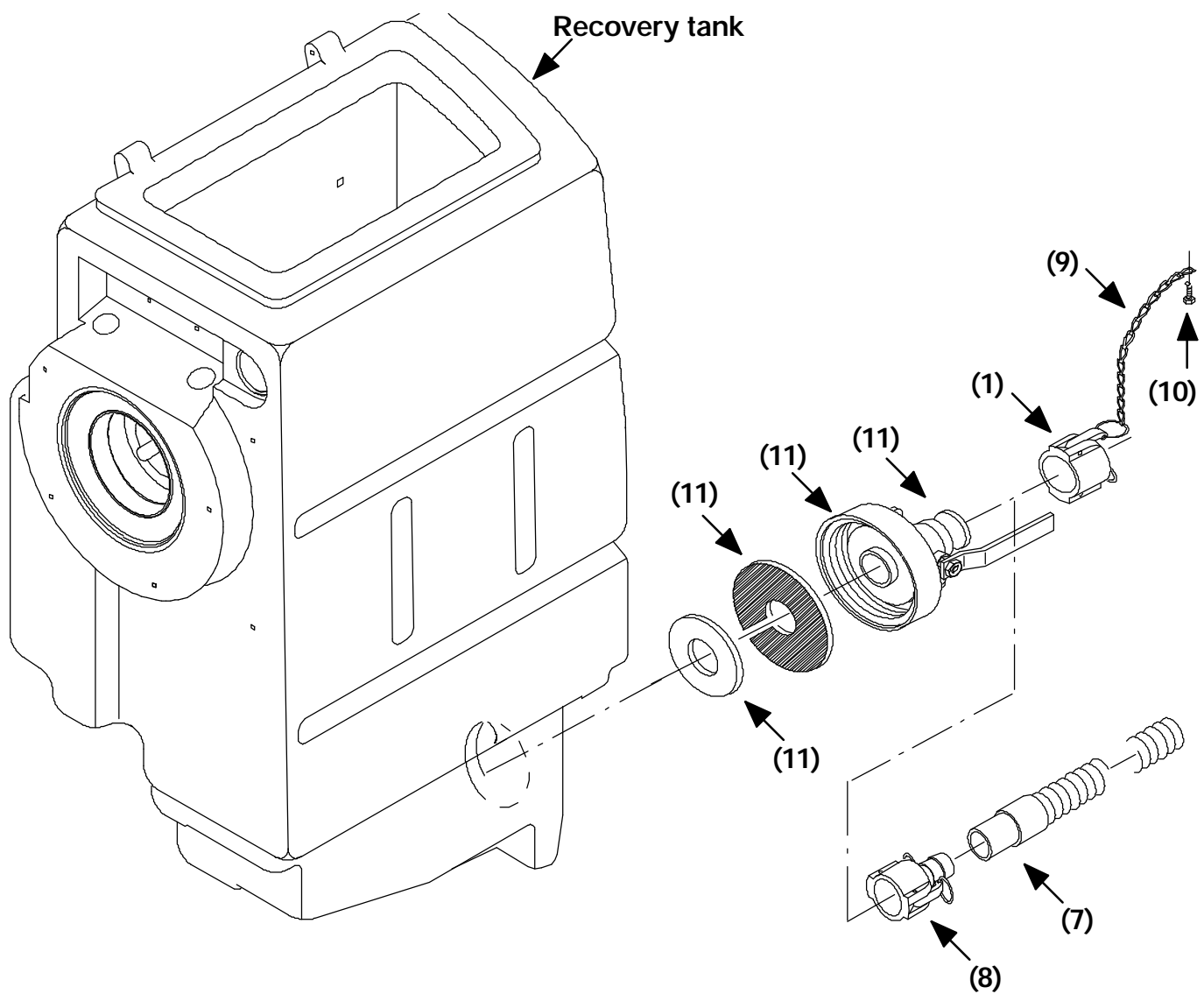


FIG. 1 - Recovery Tank Drain Cap Assembly

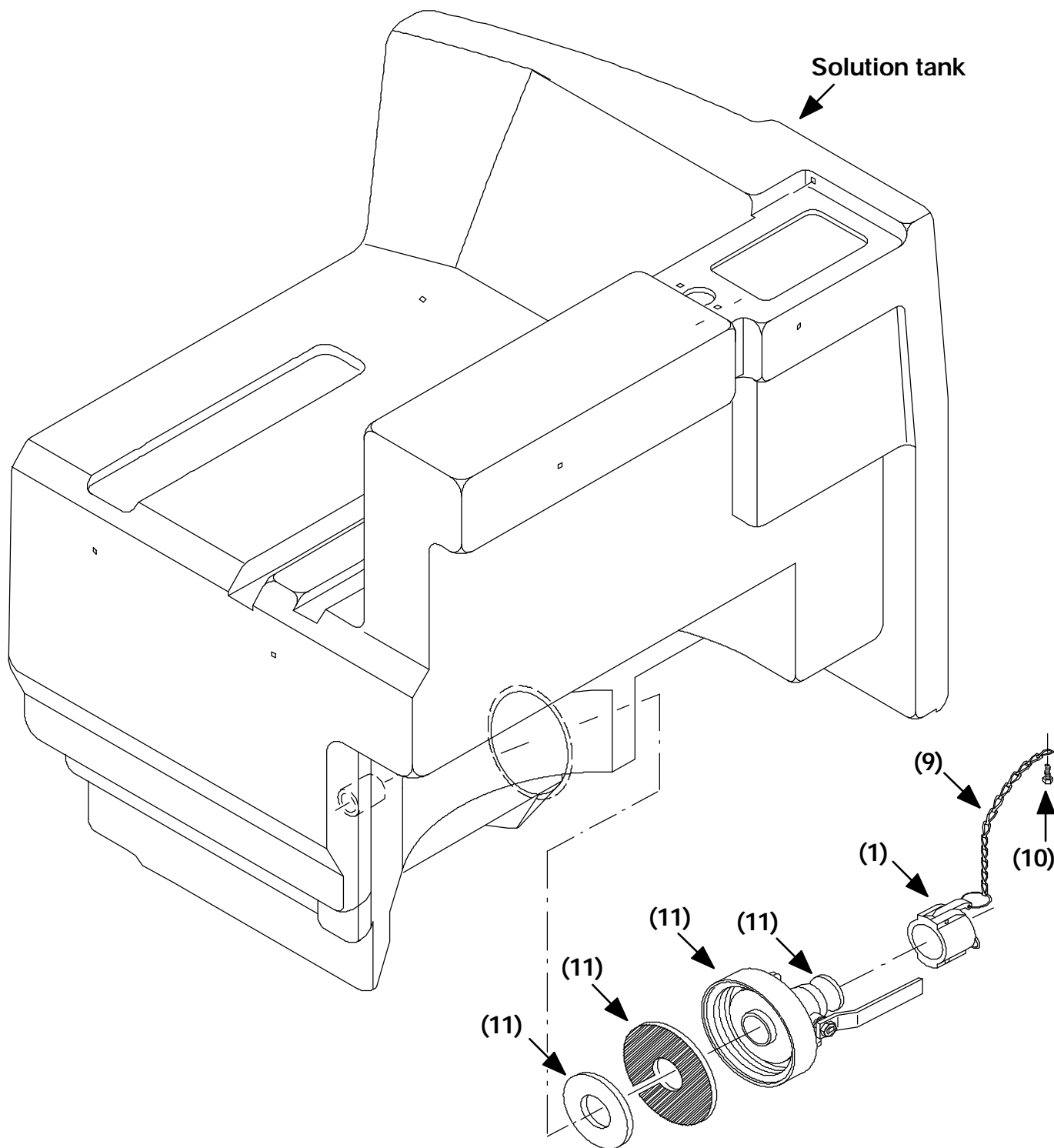


FIG. 2 - Solution Tank Assembly

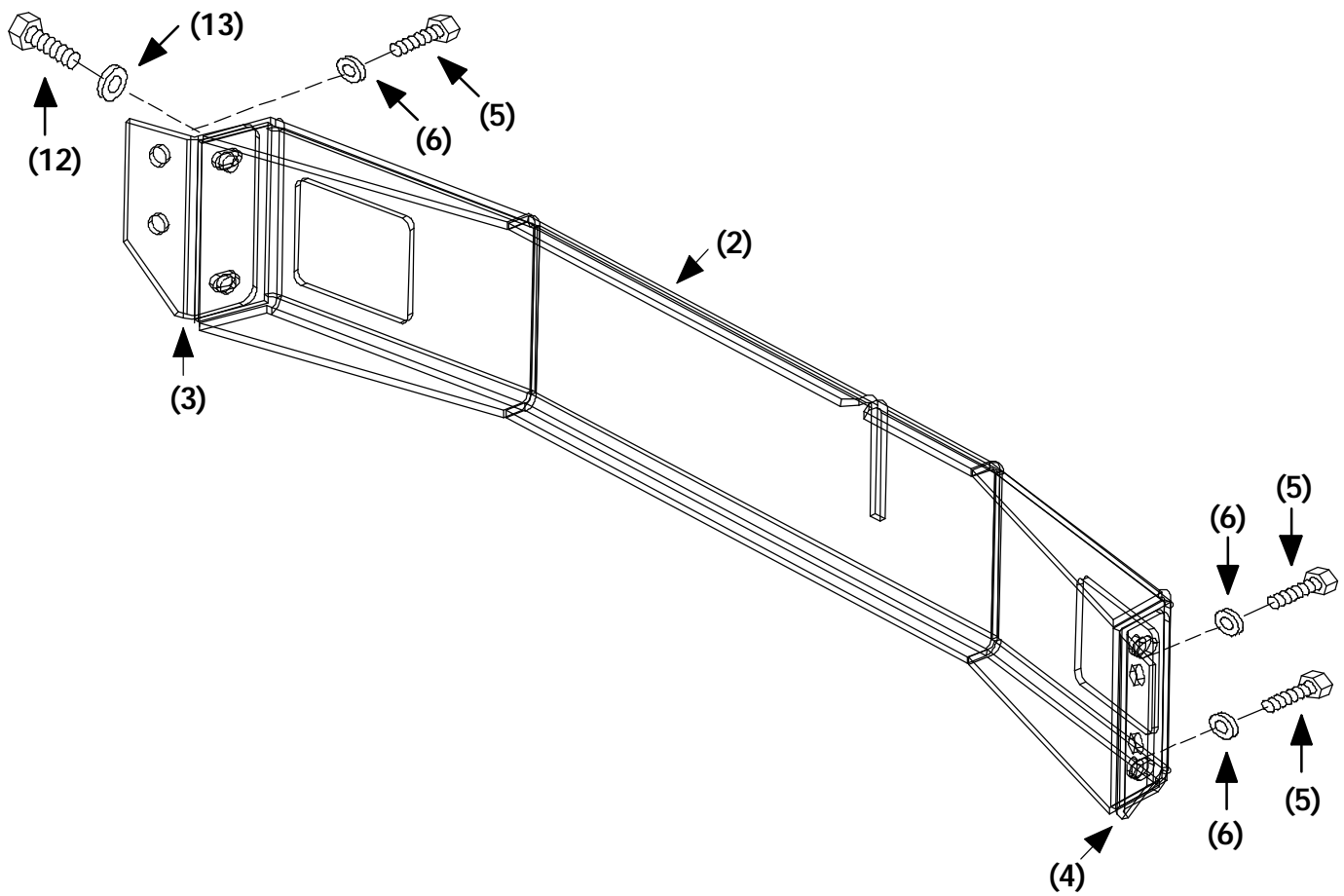


FIG. 3 - Rear Bumper, Mount Brackets, And Mounting Hardware

BILL OF MATERIALS FOR POSITIVE CONTROL DRAIN KIT 365100

| Ref. | TENNANT Part No. | Description | Qty. |
|-------------|-----------------------------|-------------------------------|-------------|
| 1 | 48733 | Dust cap | 1 |
| 2 | 365151 | Rear bumper | 1 |
| 3 | 365152 | RH rear bumper bracket | 1 |
| 4 | 365153 | LH rear bumper bracket | 1 |
| 5 | 03192 | M10 hex screw, 30mm | 8 |
| 6 | 32492 | 3/8 inch flat washer | 8 |
| 7 | 75635 | Hose and cuff assembly | 1 |
| 8 | 48734 | Female hose shank coupler | 1 |
| 9 | 19903 | Chain, 13 links | 1 |
| 10 | 16944 | M4 hex screw, 10mm | 1 |
| 11 | 365184 | Positive control cap assembly | 2 |
| 12 | 16931 | M8 hex screw, 20mm | 4 |
| 13 | 32491 | Flat washer, 5/16 inch | 4 |

TENNANT COMPANY
P. O. Box 1452
Minneapolis, MN 55440-1452