



INSTRUCTION BULLETIN

No. 340127
Machine: 6080/3640
Published: 9-99/01
System: SWEEPING

NOTE: DO NOT DISCARD the Parts List from the Instruction Bulletin. Place the Parts List in the appropriate place in your machine manual for future reference. Retaining the Parts List will make it easier to reorder individual parts and will save you the cost of ordering an entire kit.

NOTE: Numbers in parenthesis () are reference numbers for parts listed in Bill of Materials.

Installation instructions for kit numbers 373129 and 373131

SYNOPSIS / PROBLEM:

This kit contains the parts needed to install a vacuum chamber kit on the model 6080 and 3640 sweepers. This kit will improve the vacuum wand seal and also make it easier to install the nozzle in the machine.

Please follow step-by-step instructions.

SPECIAL TOOLS / CONSIDERATIONS: None

(Estimated time to complete: 1 hour)

PREPARATION FOR KIT 373129:

(Refer to FIG. 1 and 2)

FOR SAFETY: Before leaving or servicing machine, stop on level surface and set parking brake. Then turn off machine and remove key.

1. Open the engine/battery cover and engage the prop rod.
2. Remove the debris hopper.
3. Pull the existing vacuum nozzle out of the machine. Un-screw the existing nozzle from the vacuum hose. Discard the nozzle. (Refer to FIG. 1)
4. Thread the new nozzle (3) onto the existing vacuum hose. (Refer to FIG. 1)
5. **ELECTRIC MACHINE:** Disconnect and remove the battery located over the existing vacuum chamber. (Refer to FIG. 3)
6. **LP MACHINE:** Un-latch the two LP front panel locks and remove the panel from the machine.
7. Remove the hex screw holding the existing vacuum chamber in the machine. Remove the vacuum chamber. Remove the steel baffle from the vacuum chamber. Discard the vacuum chamber. Install the steel baffle into the new vacuum chamber (1). (Refer to FIG. 1 and 2)
8. Install the new vacuum wand seal (2) on the new vacuum chamber (1). (Refer to FIG. 1 and 2)
9. Install the new vacuum chamber assembly into the machine. Reinstall the new screw and tighten. (Refer to FIG. 1)
10. Position the new nozzle (3) into the new seal (2) and vacuum chamber (1). (Refer to FIG. 1)
11. Reinstall the debris hopper.

12. **ELECTRIC MACHINE:** Reinstall the battery and reconnect the battery cables.
13. **LP MACHINE:** Reinstall the front cover and lock the tabs.
14. Start the machine and operate the sweeping function. Check for proper operation of the vacuum system.

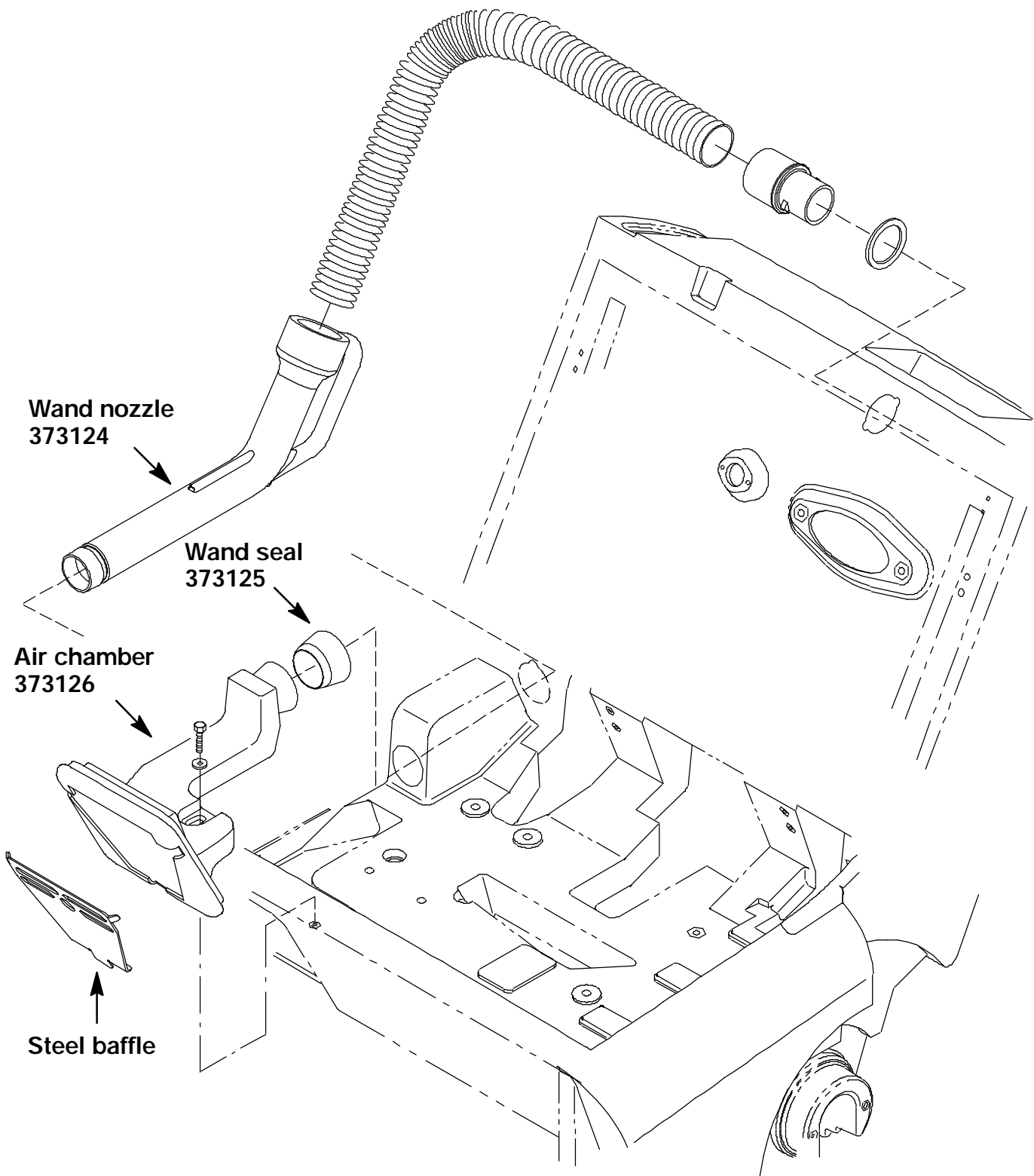


FIG. 1 - Vacuum Wand Assembly

PREPARATION FOR KIT 373131:

(Refer to FIG. 1 and 2)

FOR SAFETY: Before leaving or servicing machine, stop on level surface and set parking brake. Then turn off machine and remove key.

1. Open the engine/battery cover and engage the prop rod.
2. Remove the debris hopper.
3. Pull the existing vacuum nozzle out of the machine. Un-screw the existing nozzle from the vacuum hose. Discard the nozzle. (Refer to FIG. 1)

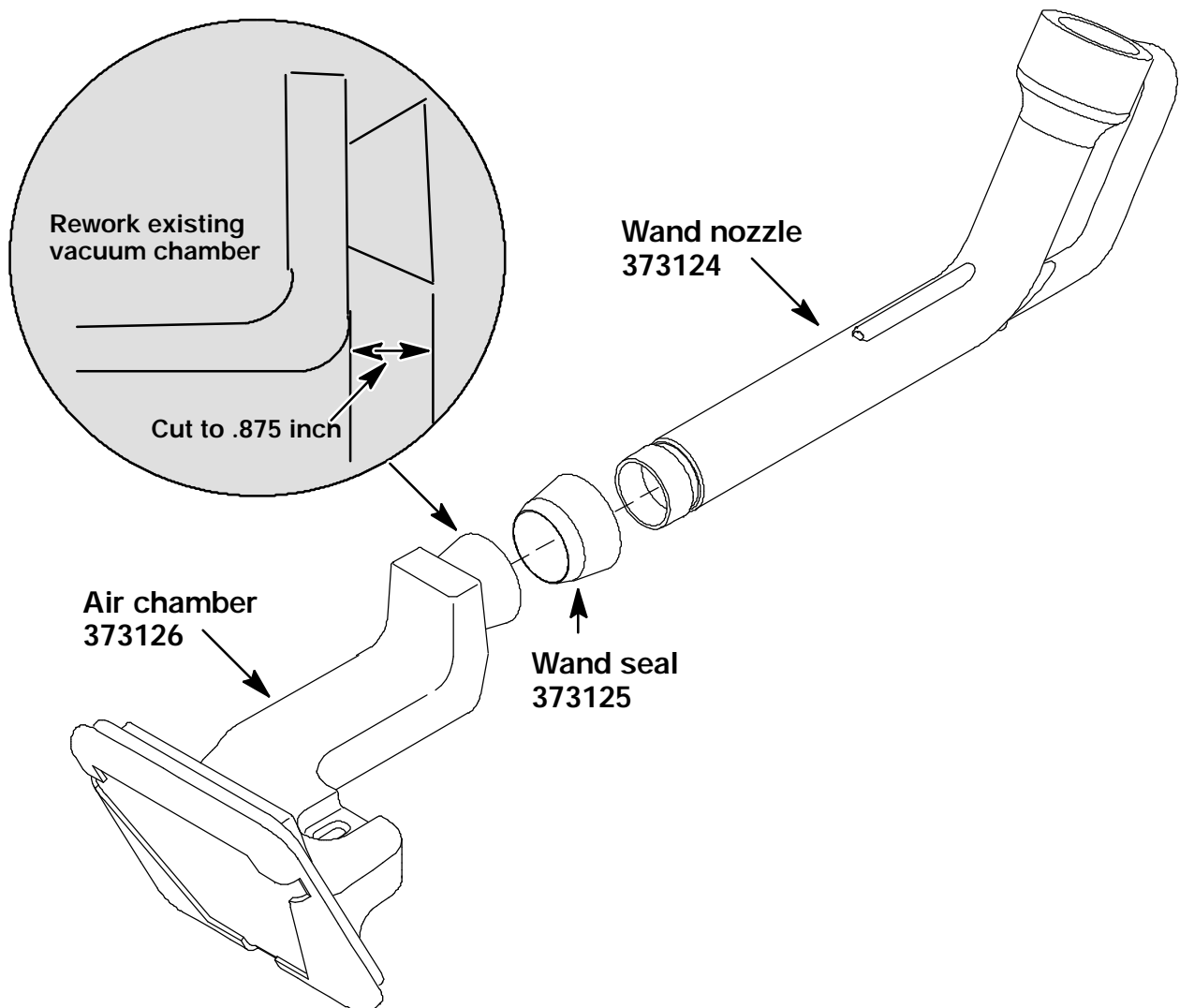


FIG. 2 - Vacuum Chamber, Seal, Wand, And Existing Chamber Rework

4. Thread the new nozzle (3) onto the existing vacuum hose. (Refer to FIG. 1)
5. **ELECTRIC MACHINE:** Disconnect and remove the battery located over the existing vacuum chamber.
6. **LP MACHINE:** Un-latch the two LP front panel locks and remove the panel from the machine.
7. Remove the hex screw holding the existing vacuum chamber in the machine. Remove the vacuum chamber. Use a razor knife to rework the end of the existing vacuum chamber to the .875 inch dimension. (Refer to FIG. 2)

8. Install the new vacuum wand seal (2) on the reworked vacuum chamber.
(Refer to FIG. 1 and 2)
9. Install the reworked vacuum chamber assembly back in the machine. Reinstall the hex screw and tighten.
10. Position the new nozzle (3) into the new seal (2) and reworked vacuum chamber.
11. Reinstall the debris hopper.
12. **ELECTRIC MACHINE:** Reinstall the battery and reconnect the battery cables.
13. **LP MACHINE:** Reinstall the front cover and lock the tabs.
14. Start the machine and operate the sweeping function. Check for proper operation of the vacuum system.

BILL OF MATERIALS FOR VACUUM CHAMBER KIT 373129

Ref.	TENNANT Part No.	Description	Qty.
1	373126	High air flow chamber	1
2	373125	Vacuum wand seal	1
3	373124	Wand nozzle, 1.8 OD	1
4	80096	Vacuum chamber seal	1

BILL OF MATERIALS FOR WAND NOZZLE REPLACEMENT KIT 373131

Ref.	TENNANT Part No.	Description	Qty.
1	373124	Wand nozzle, 1.8 OD	1
2	373125	Vacuum wand seal	1

TENNANT COMPANY
P. O. Box 1452
Minneapolis, MN 55440-1452