



# INSTRUCTION BULLETIN

No. 340124  
Machine: 6080/3640  
Published: 9-99/02  
System: SWEEPING

**NOTE: DO NOT DISCARD the Parts List from the Instruction Bulletin. Place the Parts List in the appropriate place in your machine manual for future reference. Retaining the Parts List will make it easier to reorder individual parts and will save you the cost of ordering an entire kit.**

*NOTE: Numbers in parenthesis ( ) are reference numbers for parts listed in Bill of Materials.*

Installation instructions for kit number 373121

## **SYNOPSIS / PROBLEM:**

This kit contains the parts needed to install a high air flow kit on the model 6080 and 3640 sweepers. This kit increases air flow by 65% and should be installed on machines used in extreme dust applications. This kit can only be installed in machines equipped with the panel filter.

Please follow step-by-step instructions.

**SPECIAL TOOLS / CONSIDERATIONS:** Hand drill, 2 inch hole saw, razor knife

(Estimated time to complete: 2 hours)

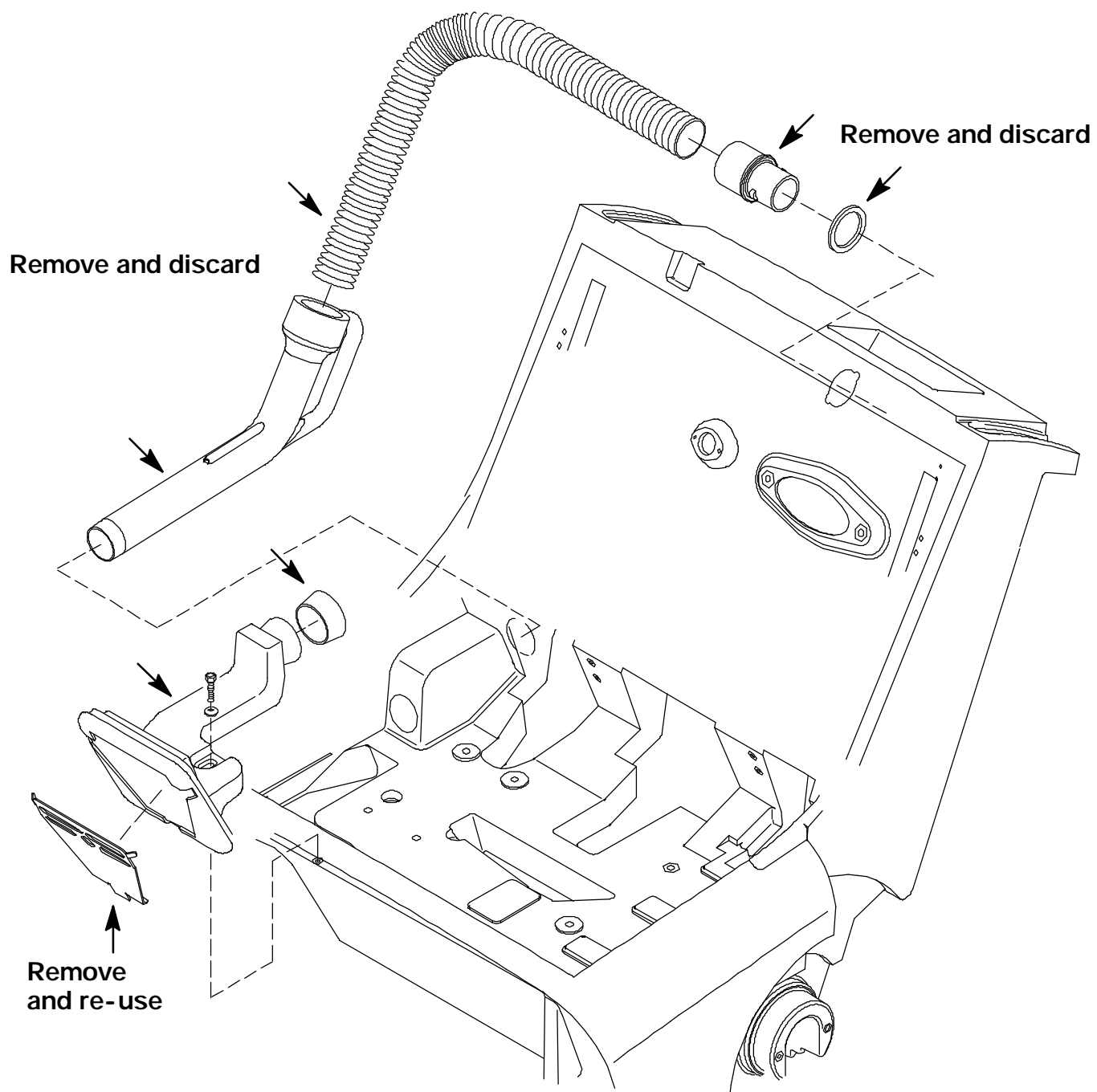
## **INSTALLATION:**

(Refer to FIG. 1 thru 4)

**FOR SAFETY: Before leaving or servicing machine, stop on level surface and set parking brake. Then turn off machine and remove key.**

1. Open the engine/battery cover and engage the prop rod.
2. Remove the debris hopper.
3. Pull the existing vacuum nozzle out of the machine. Disconnect the vacuum hose from the upper filter chamber. Discard the nozzle, vacuum hose, and cuff assembly.  
(Refer to FIG. 1)
4. Un-latch and open the filter cover. (Refer to FIG. 2)
5. **ELECTRIC MACHINE:** Disconnect and remove the battery located over the existing vacuum chamber. (Refer to FIG.4)
6. **LP MACHINE:** Remove the LP tank from the machine. Un-latch the two LP front panel locks and remove the panel from the machine.
7. Remove the hex screw holding the existing vacuum chamber in the machine. Remove the vacuum chamber from the machine. Remove the steel baffle from the vacuum chamber. Discard the vacuum chamber. Install the steel baffle into the new vacuum chamber (1).  
(Refer to FIG. 1 and 2)
8. Install the new vacuum chamber seal (2) on the vacuum chamber (1). (Refer to FIG. 1 and 2)
9. Install the new vacuum tube seal (3) on the end of the vacuum chamber (1). (Refer to FIG.2)

10. Go to the rear of the machine and locate the outer hole on the right side of the frame where the vacuum nozzle was located. Use a razor knife to trim the hole enough so the new vacuum tube weldment (4) will slide in and contact the vacuum tube seal (3) on the end of the new vacuum chamber (1). **(the tab on the tube faces the back of the machine)** *It may also be necessary to trim the inner hole.* (Refer to FIG.2)
11. Position the new vacuum chamber assembly into the machine. Reinstall the hex screw and tighten. (Refer to FIG.2)
12. Rotate the tube (4) until the hole in the attachment tab lines up with a solid section of the machine frame. Install the thread forming screw (5) through the hole and into the frame. *(no pilot hole is needed)* (Refer to FIG.2)
13. Use the dimensions in Fig. 5 to mark and drill a 2 inch diameter hole in the right side of the filter cover. (Refer to FIG.4)
14. Install the hose coupling elbow (9) and gasket (11) over the newly drilled 2 inch hole on the side of the filter cover. Use three thread forming screws (10) to attach the elbow (9) and gasket (11) to the filter cover. *(no pilot holes are needed)* (Refer to FIG.2)
15. Install the new vacuum hose (7) on the end of the vacuum tube (4) using the worm drive clamp (6). (Refer to FIG.2)
16. Install the other end of the vacuum hose (7) by screwing it into the threaded cuff (8). Slip the cuff (8) and hose (7) assembly onto the hose coupling elbow (9). (Refer to FIG.2)
17. The hole that was left open when the old vacuum hose was removed in step 3 needs to be plugged. Use the two large washers (13), gasket (14), hex screw (15), two small washers (16), and nyloc nut (17) to attach the whole assembly to the upper vacuum chamber. (Refer to FIG.2)
18. Close the filter cover and re-latch.
19. Reinstall the debris hopper.
20. **ELECTRIC MACHINE:** Install new battery bracket (18) onto motor with motor mounting hardware. Position the battery spacer (12) over the new vacuum chamber (1). Reinstall the battery. Trim the right hand, upper corner of the battery so the battery cover will set down properly. **(trim down only to within about a .25 inch of the top of the battery main case)** Reconnect the battery cables. (Refer to FIG.2,3 and 4)
21. **LP MACHINE:** Reinstall the front cover and lock the tabs. Reinstall the LP tank.
22. Start the machine and operate the sweeping function. Check for proper operation of the vacuum system.



**FIG. 1 - Parts To Remove And Discard**

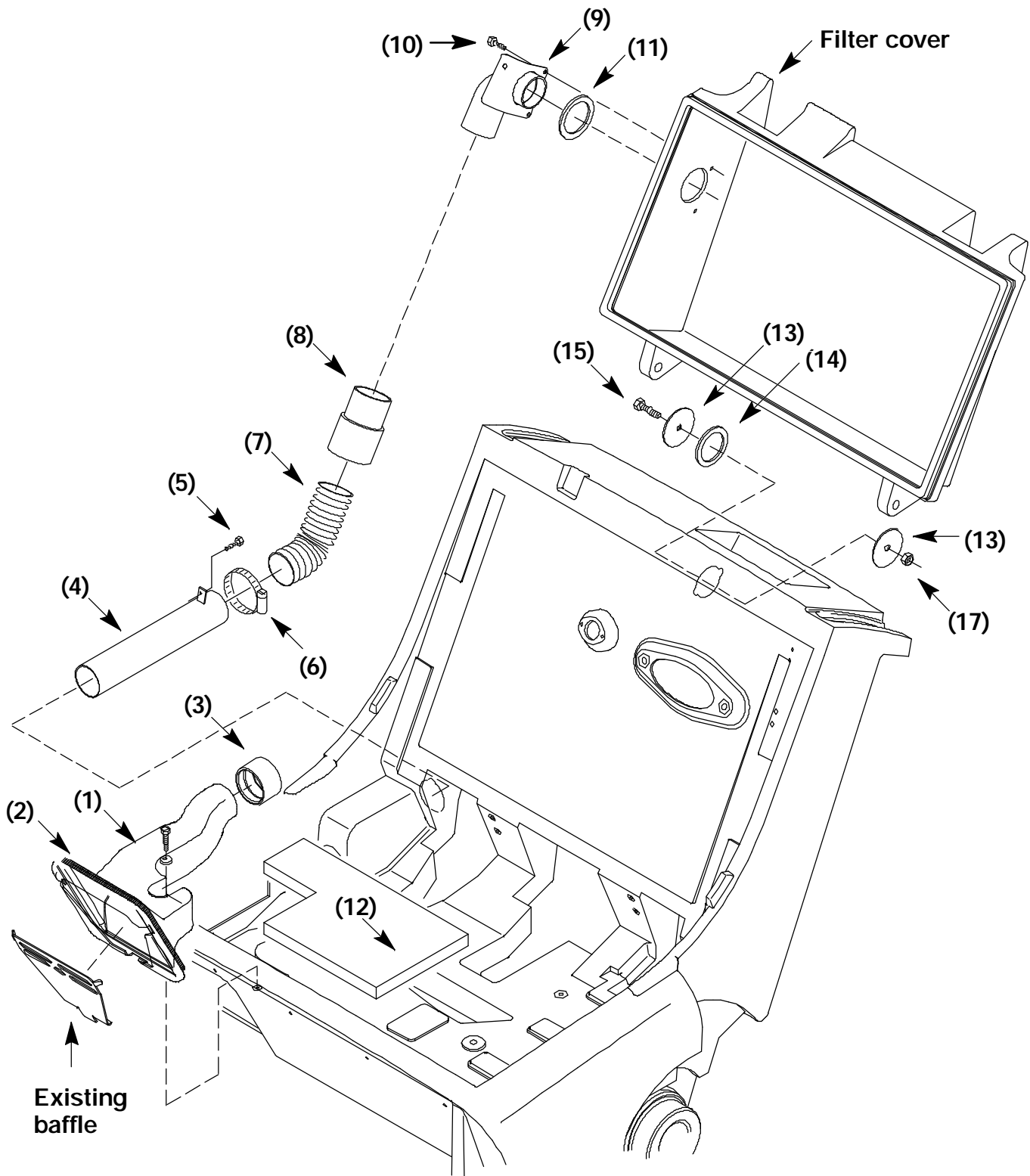
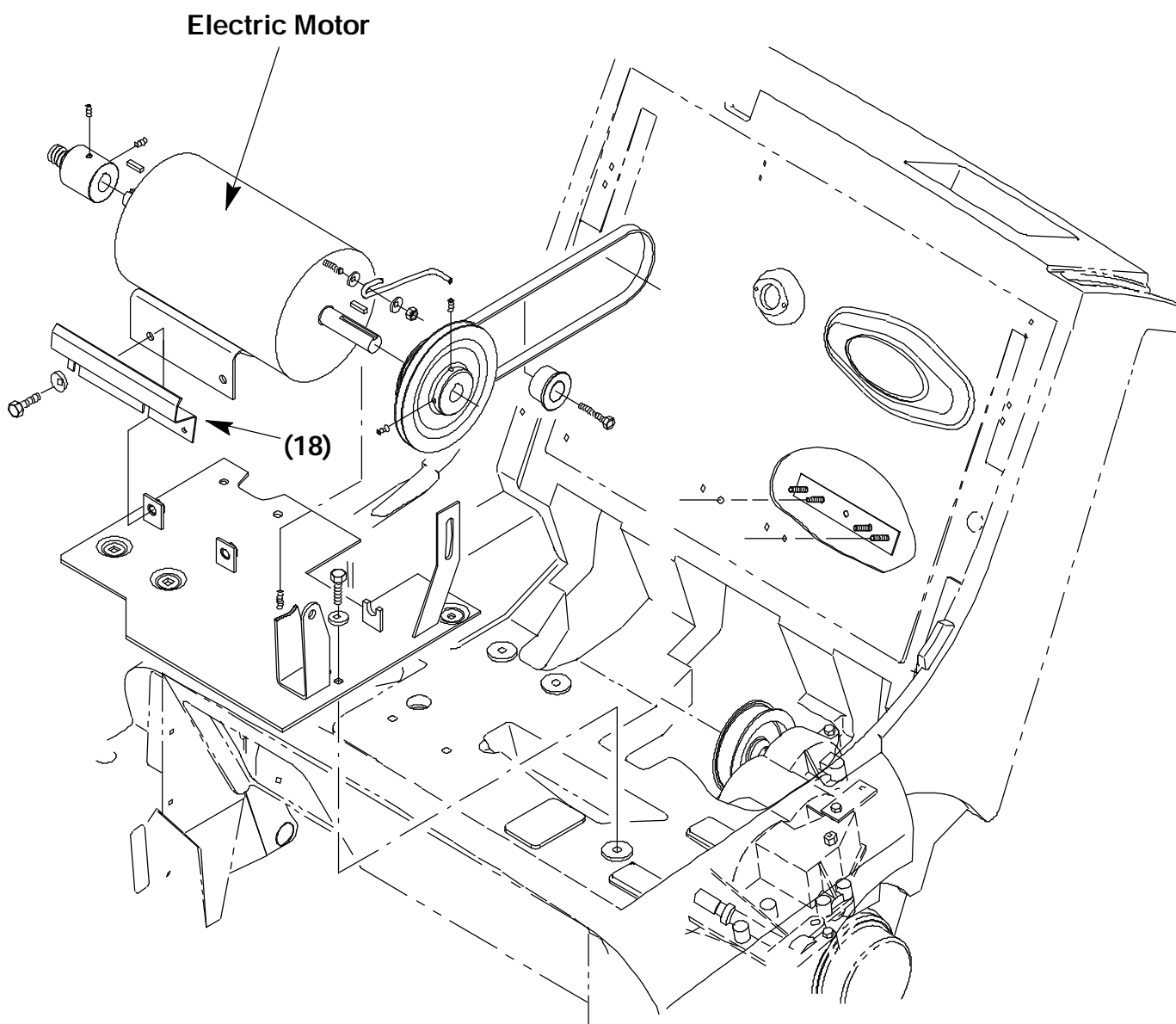
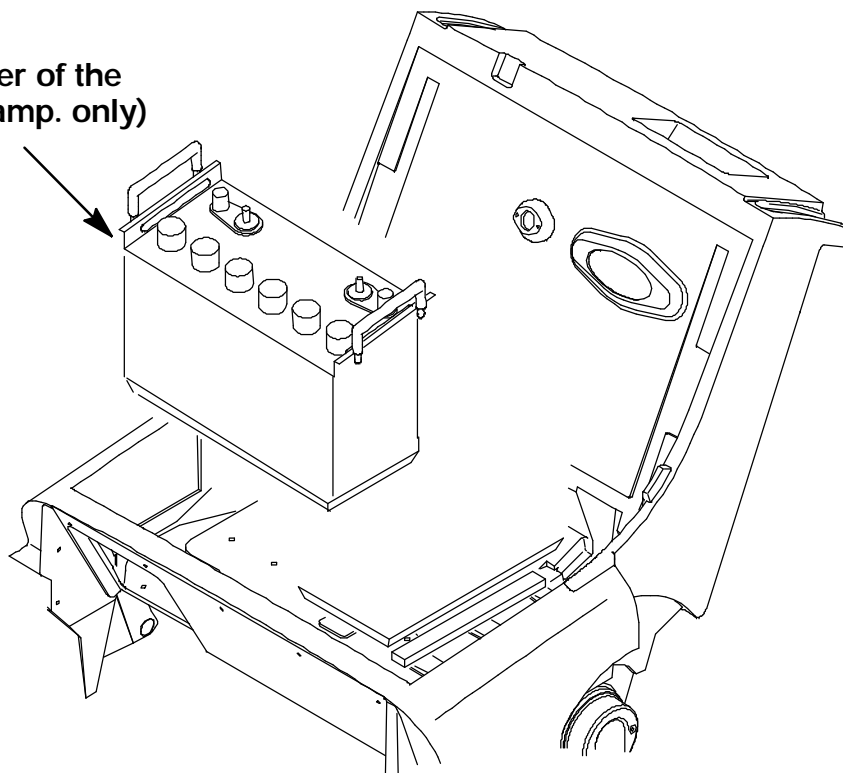


FIG. 2 - High Air Flow Assembly

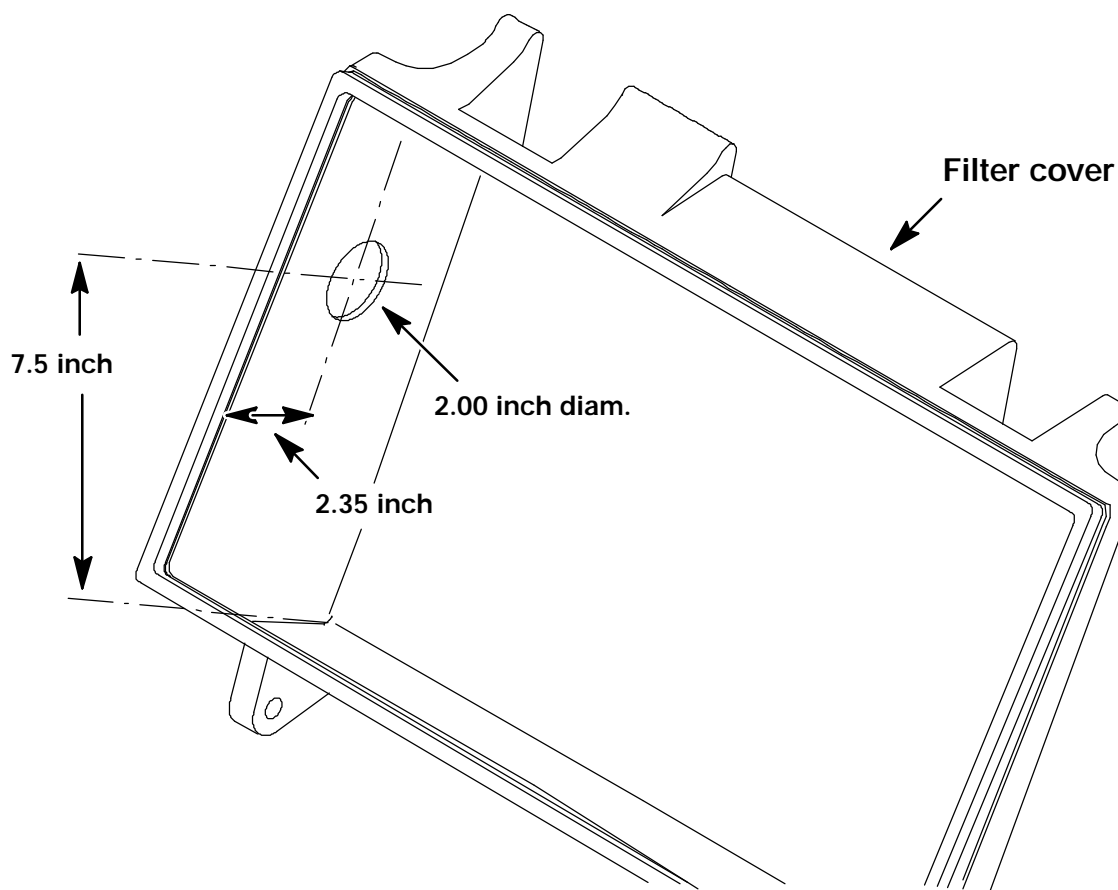


**FIG. 3 - Battery Bracket Installation**

Cut this corner of the  
battery (215 amp. only)



**FIG. 4 - Cut Battery Corner (215 amp. only)**



**FIG. 5 - Rework Right Side Of Filter Cover**

**BILL OF MATERIALS FOR HIGH AIR FLOW KIT 373121**

<b>Ref.</b>	<b>TENNANT Part No.</b>	<b>Description</b>	<b>Qty.</b>
1	373115	High flow vacuum chamber	1
2	80096	Vacuum chamber seal	1
3	373116	Vacuum tube seal	1
4	373123	Vacuum tube weldment	1
5	20394	#10 thread cutting screw	1
6	22297	Worm drive clamp	1
7	373118	Flex hose, 3.25 in.	1
8	83285	Hose cuff	1
9	373113	Hose elbow coupling	1
10	20394	#10 thread cutting screw	3
11	80392	Cuff gasket	1
12	373119	Battery spacer(electric only)	1
13	373117	Washer	2
14	80392	Cuff gasket	1
15	76570	M8 hex screw, 30mm	1
16	32492	Flat washer. 3/8 in.	2
17	08709	M8 nyloc nut	1
18	379205	Battery Bracket	1

TENNANT COMPANY  
P. O. Box 1452  
Minneapolis, MN 55440-1452