

NOTE: DO NOT DISCARD the Parts List from the Instruction Bulletin. Place the Parts List in the appropriate place in the machine manual for future reference. Retaining the Parts List will make it easier to reorder individual parts and will save the cost of ordering an entire kit.

NOTE: Numbers in parenthesis () are reference numbers for parts listed in Bill of Materials.

Installation instructions for **kit number 365139**.

SYNOPSIS:

This kit contains the parts needed to replace the rear squeegee assembly on 8200/8210 machines. Please follow step-by-step instructions.

SPECIAL TOOLS / CONSIDERATIONS: None.

(Estimated time to complete: 2 hours)

PREPARATION:

1. Park the machine on a clean level surface, turn off the machine, remove the key, and set the parking brake.

FOR SAFETY: Before leaving or servicing machine, stop on level surface, set parking brake, turn off machine, and remove key.

INSTALLATION:

1. Disconnect the vacuum hose from the squeegee frame.
2. Remove all hardware securing the rear squeegee to both sides of the machine. Set all squeegee mounting hardware aside. Refer to Fig. 1.

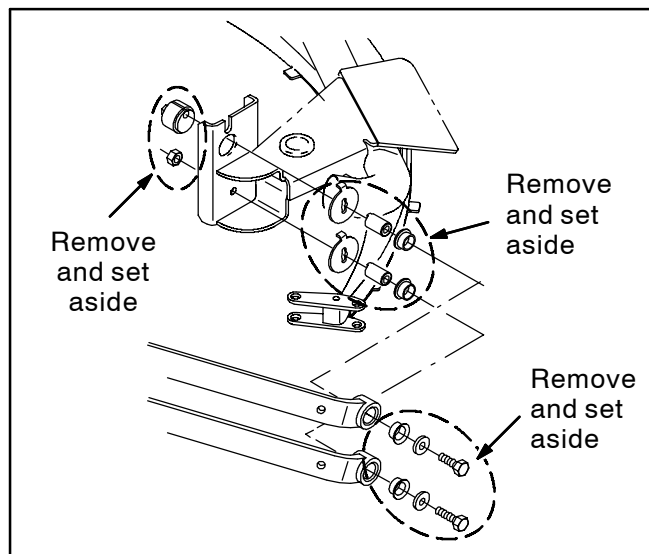


FIG. 1

3. Disconnect the squeegee lift cable at the center of the rear squeegee frame. Set the clevis and cotter pins aside. Refer to Fig. 2.

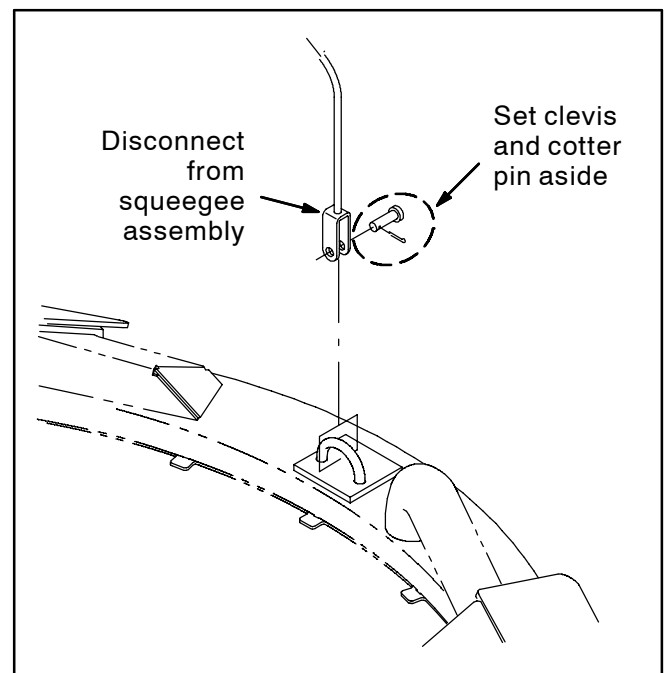


FIG. 2

4. Remove the rear squeegee assembly from under the machine. Refer to Fig. 4.

5. Remove the caster assemblies from the squeegee removed from the machine in the previous step. Set the caster assemblies, thrust bearings, retaining rings, and washers aside. Discard the adjustment knobs, jam knobs, and the rest of the old squeegee assembly. Refer to Fig. 3.

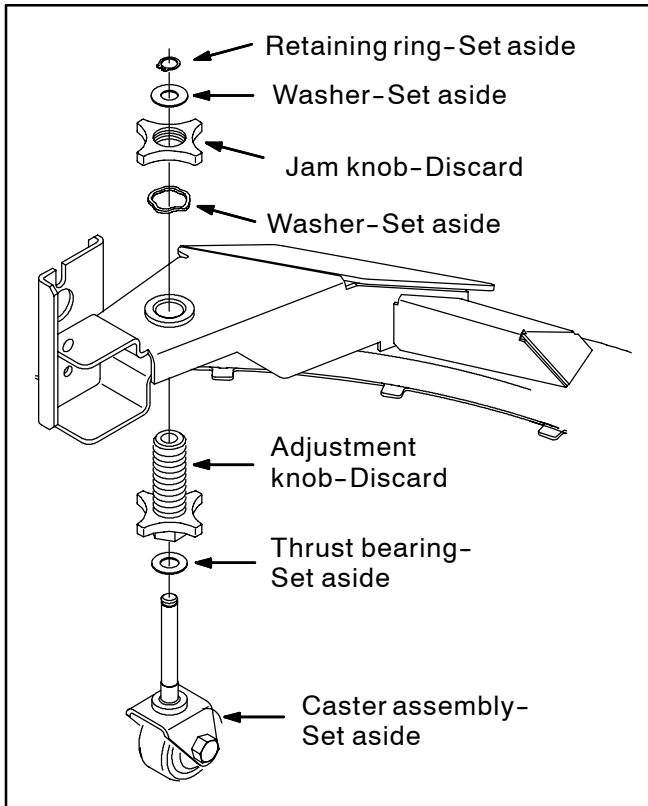


FIG. 3

6. Use the saved thrust bearings, retaining rings, washers, and the new knobs (19) and (20) to install both caster assemblies onto the squeegee assembly. Refer to Fig. 3 and Fig. 4.
7. Position the new rear squeegee assembly under the machine.
8. Use the saved hardware to install the new rear squeegee onto the machine. Refer to Fig. 1.
9. Use the saved cotter and clevis pin to connect the squeegee lift cable to the new squeegee assembly. Refer to Fig. 2.
10. Start the machine and test the rear squeegee.

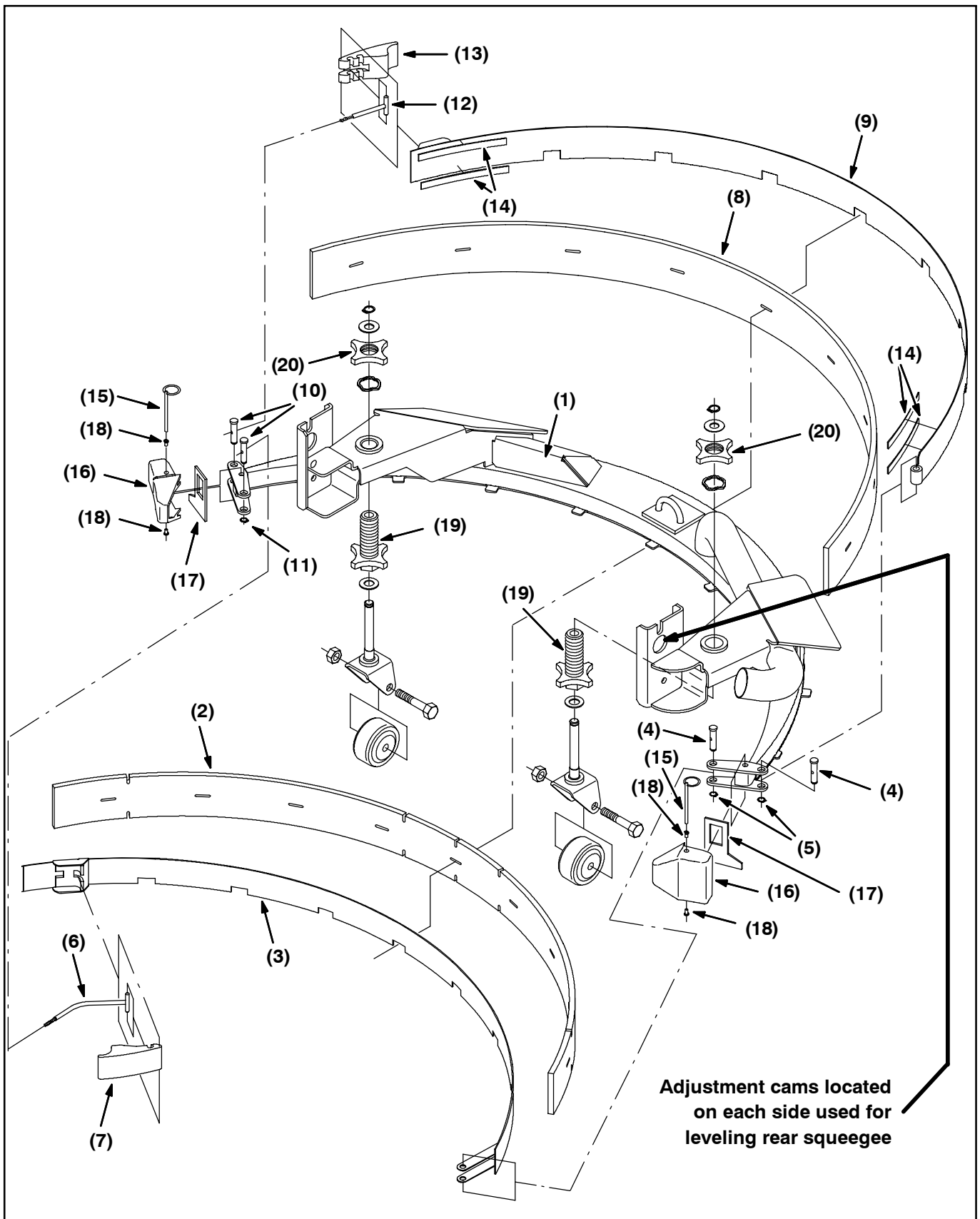


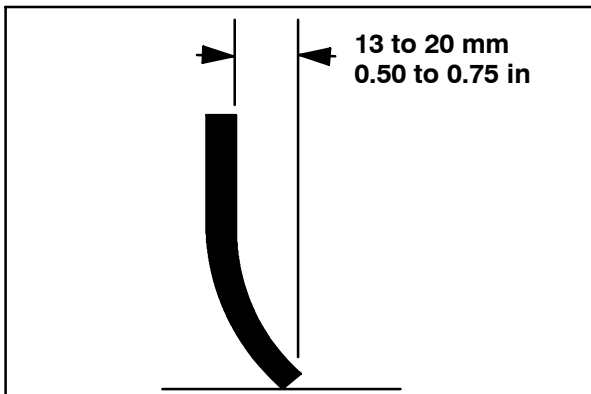
FIG. 4

LEVEL THE REAR SQUEEGEE:
(Refer to Fig. 5 and Fig. 6)

1. Start the machine and lower the rear squeegee. Shut off the engine.

FOR SAFETY: Before leaving or servicing machine, stop on level surface, set parking brake, turn off machine, and remove key.

2. Go to the back of the machine. **Make sure the rear squeegee has no roll out (blades vertical).** Check the rear squeegee for even contact across the entire blade.
3. If the middle or ends of the squeegee blade are off the floor--an adjustment should be made.
4. Loosen the large plastic jam nuts on top the squeegee casters. Turn the casters up at least 2 or 3 turns until the casters no longer touch the floor.
5. Loosen the hex screw outside of the adjustment cam on the upper squeegee link--at the squeegee frame (**no more than 1/2 to 3/4 turn**).



6. Place a wrench on the hex flats of the adjustment cam inside of upper squeegee link. *Turn the cams toward the front of the machine to lower the middle of the squeegee. Turn the cams toward the rear of the machine to lift the middle of the squeegee.* Normally the machined groove on top the cam will be either straight up or slightly to the rear of the machine. Cams on both sides should be oriented approximately the same. **NOTE: Perform this adjustment one side at a time. Tighten the adjustment cam hex screw on one side before loosening the other side.**

NOTE: Always hold adjustment cam in position while tightening hex screw.

7. Turn the casters back down until they solidly touch the floor, then, turn the caster back up **two** full turns. Lock down the caster jam nuts. **Be sure to hold the caster adjuster in position while tightening the lock knob.**
8. Start the machine and drive forward with the rear squeegee in the lowered position. Check the blade for even deflection. Make final roll out adjustments in 1/8 turn increments at the caster knob.
9. Operate the machine and check the rear squeegee to ensure it picks up water.

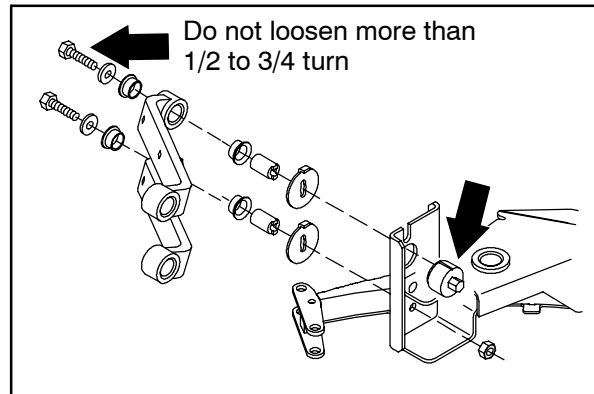


FIG. 5

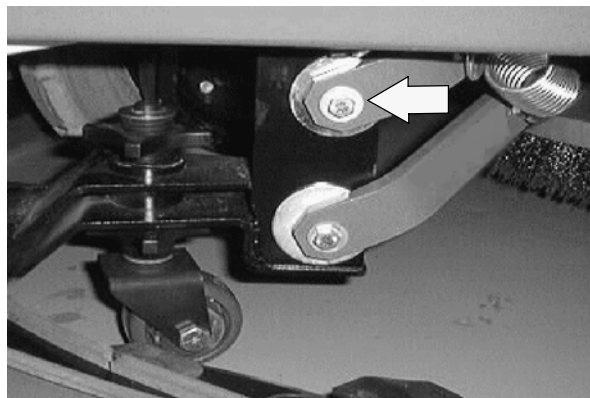
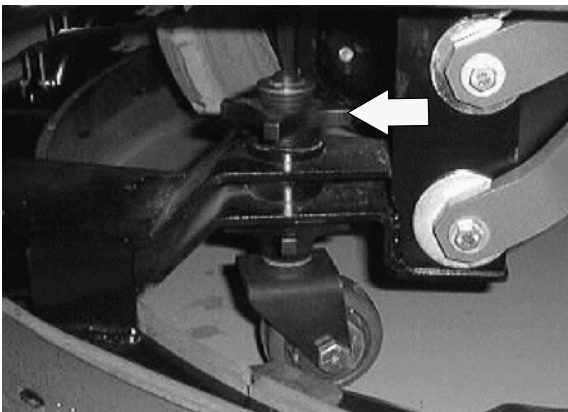


FIG. 6

Bill of Materials for Squeegee Assembly Kit, Replmt [8200/8210]-365139

Ref.	TENNANT Part No.	Description	Qty.
1	364200	Frame Wldt. Sqge	1
2	365322	Blade, Sqge, Front, 56.88L Linatex [48"]	1
3	364215	Retainer Wldt, Blade, Sqge, Front	1
4	21603	Pin, GRVD, 0.43D 01.8L [303SS]	2
5	24555	Ring, Retaining, Ext, 0.38D, [E-Ring]	2
6	83794	Bar Wldt, Retainer, Sqge, Front	1
7	21601	Cam	1
8	365323	Blade, Sqge, Rear, 64.13L Linatex [48"]	1
9	364213	Retainer Wldt, Blade, Sqge, Rear	1
10	21603	Pin, GRVD, 0.43D 01.8L [303SS]	2
11	24555	Ring, Retaining, Ext, 0.38D, [E-Ring]	2
12	21606	Bar Wldt, Retainer, Sqge, Rear	1
13	21602	Cam, Rear	1
14	03495	Strip, Non Slip, 0.50W 06.0L	4
15	71199	Pin, Hitch, 0.187D X 3.44L, PL	2
16	21586	Bumper, Sqge	2
17	83874	Gasket, Sqge	4
18	79219	Retainer	4
19	77228	Knob, Star, 3.00D 4Ear, 4.30L .59B	2
20	77227	Knob, Star, 3.00D 4Ear, .50L M30 X 3.5 [PLS]	2

TENNANT COMPANY
P. O. Box 1452
Minneapolis, MN 55440-1452