



INSTRUCTION BULLETIN

No. 340114
Machine: 6080 /3640
Published: 9-99/01
System: SWEEPING

NOTE: DO NOT DISCARD the Parts List from the Instruction Bulletin. Place the Parts List in the appropriate place in your machine manual for future reference. Retaining the Parts List will make it easier to reorder individual parts and will save you the cost of ordering an entire kit.

NOTE: Numbers in parenthesis () are reference numbers for parts listed in Bill of Materials.

Installation instructions for kit number 373106

SYNOPSIS / PROBLEM:

This kit contains the parts needed to install a vacuum wand extension on the model 6080 and 3640 sweepers. This kit allows greater reach with the vacuum wand.

Please follow step-by-step instructions.

SPECIAL TOOLS / CONSIDERATIONS: None

(Estimated time to complete: 1 hour)

INSTALLATION:

(Refer to FIG. 1)

FOR SAFETY: Before leaving or servicing machine, stop on level surface and set parking brake. Then turn off machine and remove key.

1. Remove and retain the hardware holding the upper handle stop bracket to the left side of the machine. Discard the existing upper handle stop bracket. (Refer to FIG. 1)
2. Install the new upper handle stop bracket (3) in place of the old one. Use the existing hardware. (Refer to FIG. 1)
3. Remove and retain the hardware holding the existing lower directional control cable mount bracket to the machine. Discard the existing lower directional control cable mount bracket. (Refer to FIG. 1)
4. Install the new lower directional control cable mount bracket (4)(with the tube hook) in place of the old one. Use the existing hardware. (Refer to FIG. 1)
5. Position the vacuum wand coupling (1) on the end of the vacuum wand (2). (Refer to FIG. 1)
6. Place the small end of the vacuum wand (2) over the hook of the lower bracket (4). Push the top of the vacuum wand coupling (1) into the new upper bracket (3). (Refer to FIG. 1)

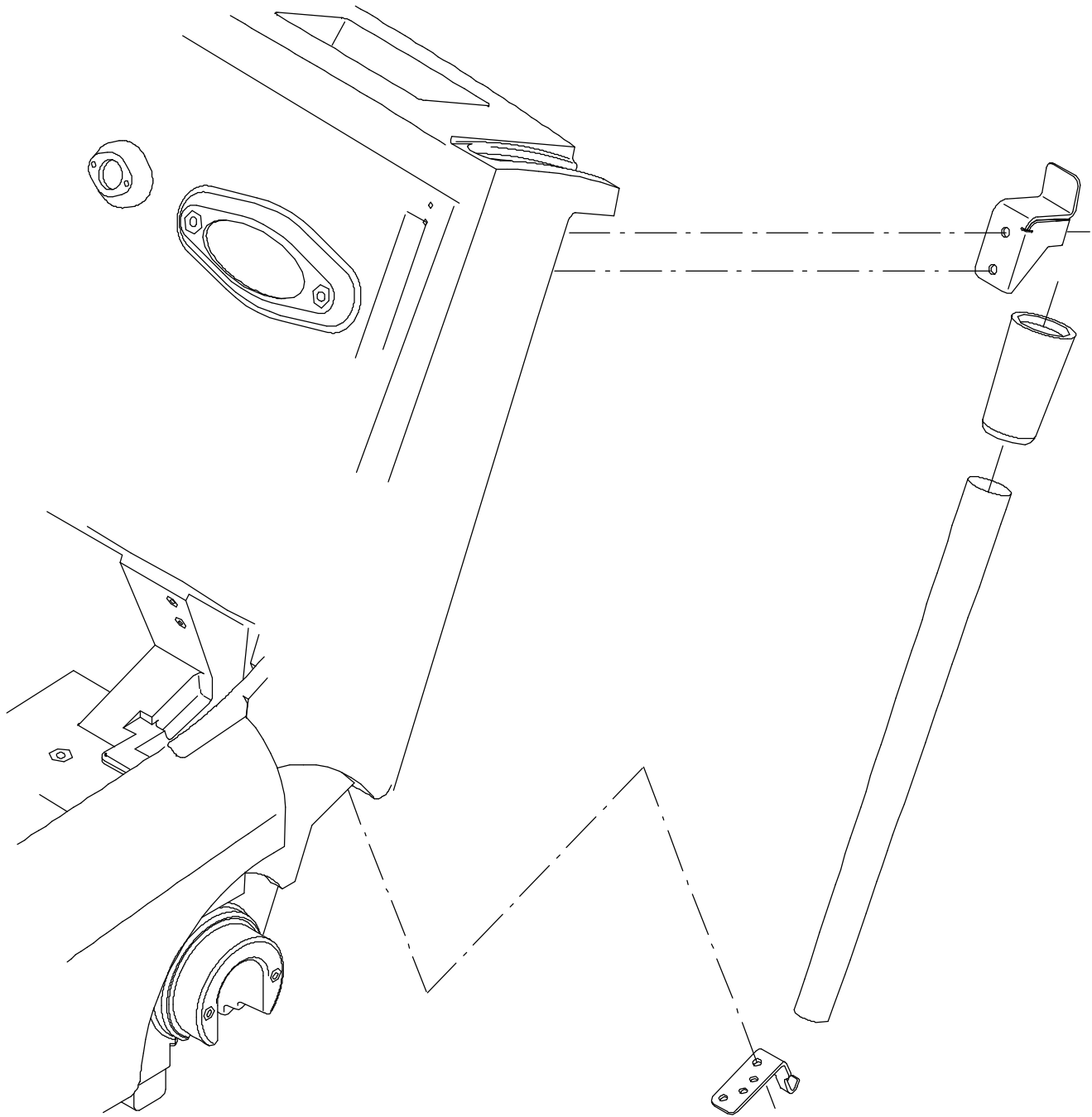


FIG. 1 - Vacuum Wand Attachment Parts
BILL OF MATERIALS FOR VACUUM WAND KIT 373106

Ref.	TENNANT Part No.	Description	Qty.
1	80299	Vacuum wand coupling	1
2	80354	Vacuum wand	1
3	80106	Handle stop bracket	1
4	80113	Cable mount plate	1

TENNANT COMPANY
P. O. Box 1452
Minneapolis, MN 55440-1452