



INSTRUCTION BULLETIN

No. 340093
Machine: 8200
Published: 11-97/00
System: OPTIONS

NOTE: DO NOT DISCARD the Parts List from the Instruction Bulletin. Place the Parts List in the appropriate place in your machine manual for future reference. Retaining the Parts List will make it easier to reorder individual parts and will save you the cost of ordering an entire kit.

NOTE: Numbers in parenthesis () are reference numbers for parts listed in Bill of Materials.

Installation Instructions for Kit number 364311

SYNOPSIS / PROBLEM:

This kit contains the parts needed to install a tilt steering wheel kit on the model 8200 sweeper/scrubber.

Please follow step-by-step instructions.

SPECIAL TOOLS / CONSIDERATIONS: None

(Estimated time to complete: 2 hours)

INSTALLATION:

(Refer to FIG. 1 and 2)

FOR SAFETY: Before leaving or servicing machine, stop on level surface and set parking brake. Then turn off machine and remove key.

1. Open the engine cover.
2. Locate the steering wheel column and hydraulic motor in front of the operators compartment. (Refer to FIG. 1)
3. Remove the two nuts holding the U-bolt and steering wheel column to the stationary mount bracket. Remove and discard the U-bolt. (Refer to FIG. 1)
4. Remove and discard the stationary mount bracket. (Refer to FIG. 1)
5. Position the two flange bearings (5), these are the bearings with nuts installed on the flange, on each end of the tilt bracket (11). The flange goes to the outside. (Refer to FIG. 2)
6. Pull the steering hydraulic motor and column upward. Slip the tilt bracket assembly under the motor and in position between the two mount brackets. Install four hex screws (6) and four flat washers (9). Tighten to 7 - 10 ft lbs. (Refer to FIG. 2)
7. Position the steering column into the pivot bracket (11) and install the outer clamp over the column. Hand tighten the screws tight. (Refer to FIG. 2)
8. Locate the latch channel mount (4). Install three flange bearings (7), two inside the bracket flanges, and one on the bottom of the channel mount (4). Use the four hex screws (8) and nuts (13). Tighten to 7 - 10 ft lbs. (Refer to FIG. 2)
9. Locate the latch channel mount (4). Install the latch rod (1) through the bottom two bearings (7), through the compression spring (3), and then through the last bearing (7). Then push the compression spring up the rod and install the retaining ring (2). (Refer to FIG. 2)

10. Install the bearing seal (12) over the upper end of the latch rod (1). (Refer to FIG. 2)
11. Install the latch assembly into the machine. Push the latch rod (1) up through the hole in the dash panel. (Refer to FIG. 2)
12. Line up the mount holes in the latch bracket with the mount holes in the mount plate. Install four hex screws (6) and four flat washers (9). Leave the hardware loose for now. (Refer to FIG. 2)

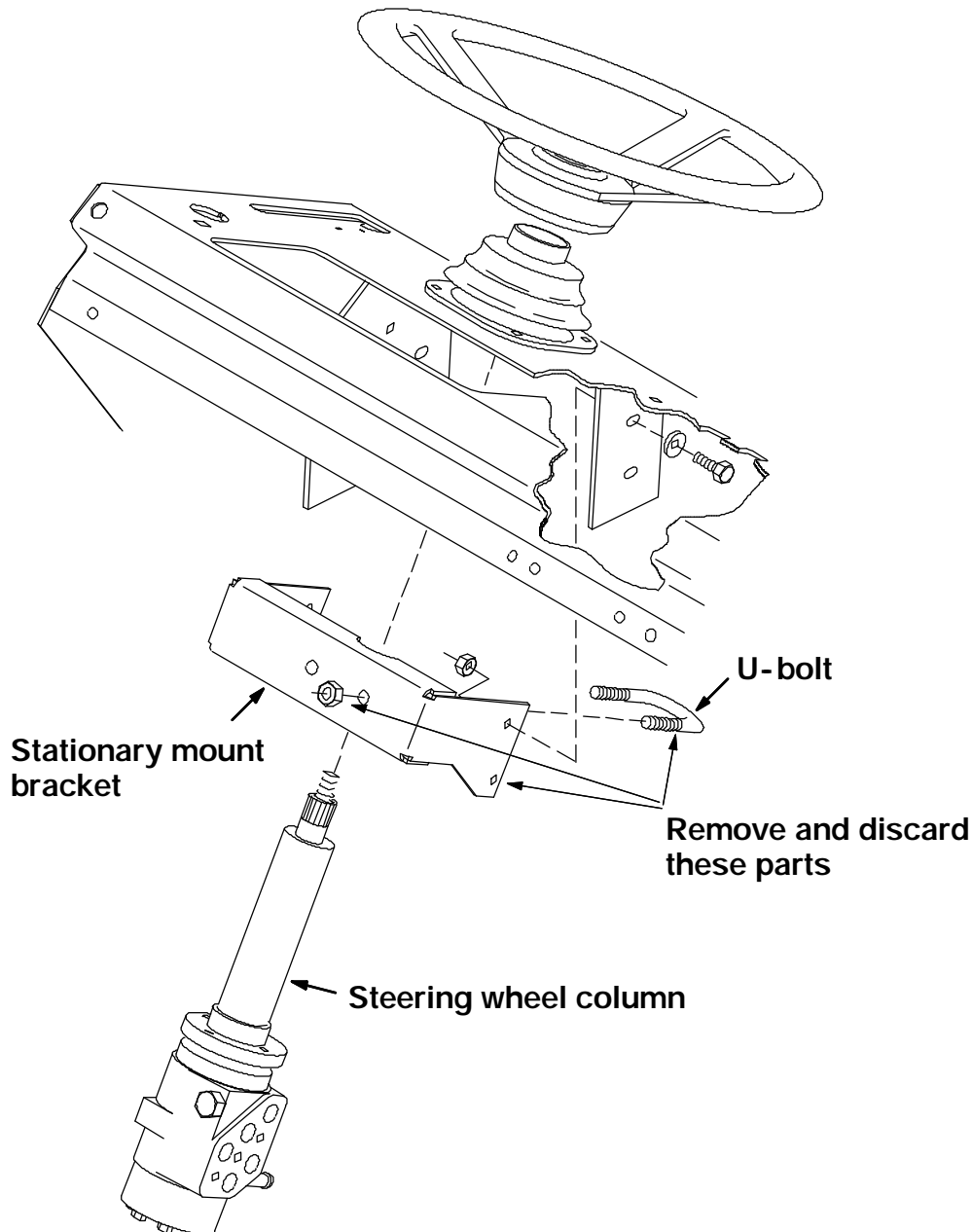


FIG. 1 - Parts Removal

13. Install the handle (10) on the upper threaded end of the latch rod (1). Hand tighten tight. (Refer to FIG. 2)
14. Push the steering wheel and column up all the way. Push the latch pin (1) into the lowest hole in the pivot bracket (11). Tighten the four latch bracket hex screws to 7 - 10 ft lbs. (Refer to FIG. 2)
15. Operate the tilt steering column and check for free movement. Close the engine cover.

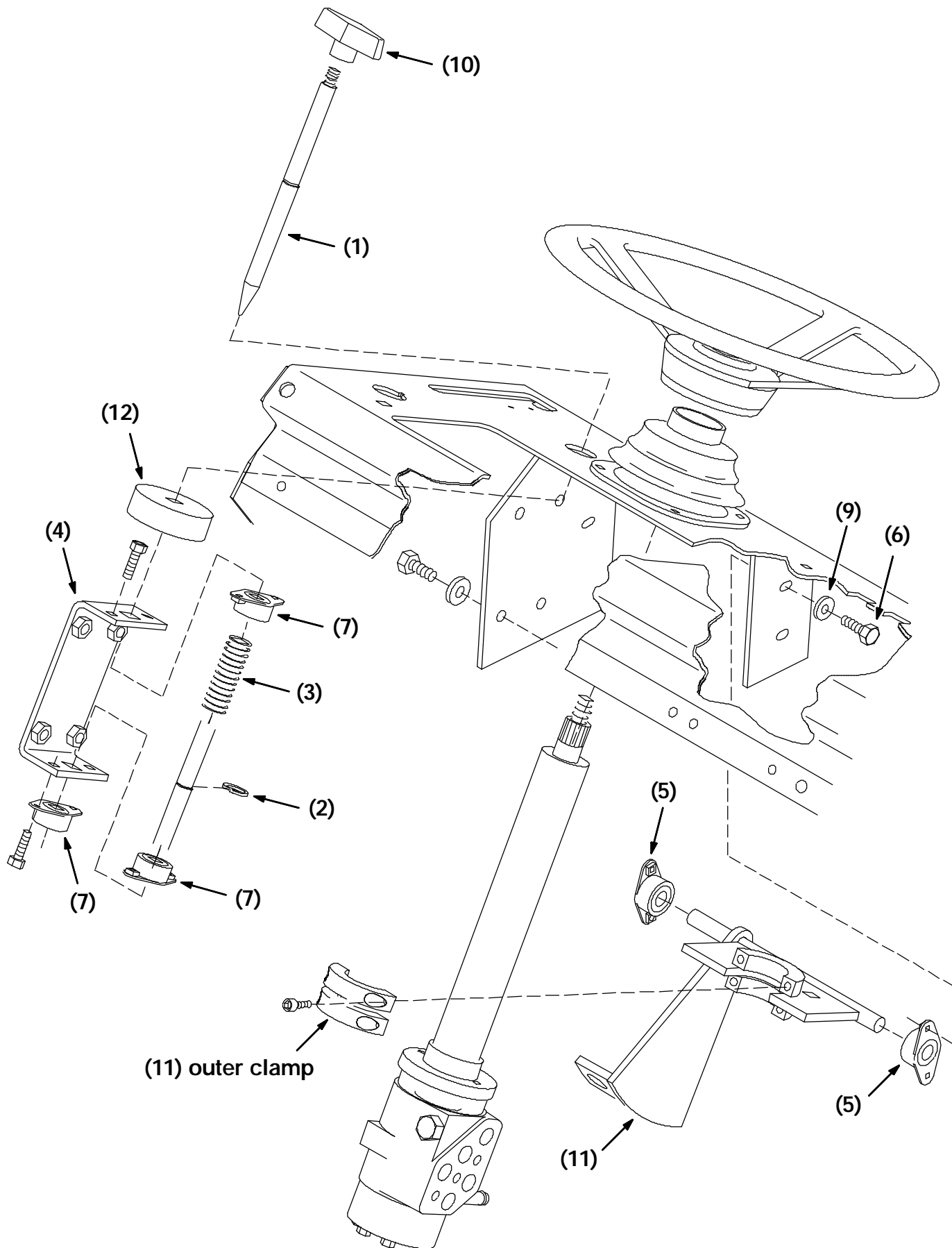


FIG. 2 - Tilt Steering Assembly

BILL OF MATERIALS FOR STEERING TILT KIT 364311

Ref.	TENNANT Part No.	Description	Qty.
1	360711	Tilt steering latch rod	1
2	70717	Retaining ring	1
3	22290	Compression spring	1
4	64655	Steering latch channel mount	1
5	70709	Flange bearing	2
6	11329	M6 hex screw, 16mm	8
7	47585	Flange bearing	3
8	06943	M6 hex screw, 20mm	4
9	19066	#10 flat washer	8
10	04706	Brush lift handle	1
11	73027	Tilt bracket	1
12	75968	Bearing seal	1
13	08708	M6 nyloc nut	4

TENNANT COMPANY
P. O. Box 1452
Minneapolis, MN 55440-1452