



INSTRUCTION BULLETIN

No. 340087
Machine: 515/515SS
Published: 5-98/02
System: SCRUBBING

NOTE: DO NOT DISCARD the Parts List from the Instruction Bulletin. Place the Parts List in the appropriate place in your machine manual for future reference. Retaining the Parts List will make it easier to reorder individual parts and will save you the cost of ordering an entire kit.

NOTE: Numbers in parenthesis () are reference numbers for parts listed in Bill of Materials.

Installation Instructions for Kit number 370106

SYNOPSIS / PROBLEM:

This kit contains the parts needed to install a scrubber vacuum fan filter box assembly on the model 515/515SS sweeper/scrubber. This filter box assembly will protect the scrubber vacuum fans from debris and possible early failure.

Please follow step-by-step instructions.

SPECIAL TOOLS / CONSIDERATIONS: None

(Estimated time to complete: 1 hour)

INSTALLATION:

(Refer to FIG. 1, 2, 3, and 4)

FOR SAFETY: Before leaving or servicing machine, stop on level surface and set parking brake. Then turn off machine and remove key.

1. Open the main machine cover and solution tank cover.
2. Pull the scrubber vacuum fan hose cuff off the plastic fitting in the front of the recovery tank. (Refer to FIG. 1)
3. Remove and discard the six screws holding the plastic fitting to the tank. Pull the plastic fitting out of the tank. (Refer to FIG. 3)
4. Remove the worm drive hose clamp holding the in-tank hose to the plastic fitting. Remove the plastic fitting from the machine and discard. Retain the gasket. (Refer to FIG. 2)
5. Install the gasket removed in step 4 over the tube end on the bigger half of the filter box assembly (1). (Refer to FIG. 3 and 4)
6. Make sure the worm drive clamp is installed over the in-tank hose. (Refer to FIG. 3 and 4)
7. Position the bigger half of the filter box assembly (1) near the opening in the recovery tank. Slip the in-tank hose and clamp over the tube end of the filter box. (Refer to FIG. 3 and 4)
8. Make sure to position the filter box (1) properly against the tank. The filter box will only fit one way. Tighten the worm drive clamp. (Refer to FIG. 3 and 4)
9. Position the filter box (1) into the opening of the recovery tank. Align the rubber gasket and filter box with the mount holes in the recovery tank. (only 4 holes out of six are used) Install the four shorter hex screws (3) and star washers (4). Hand tighten tight.
(Refer to FIG. 3 and 4)

10. Install the filter (2) into the bigger half of the filter box assembly (1).
11. Install the smaller half of the filter box assembly (1) onto the bigger half. Use the two knobs to secure the two halves of the filter box (1) together.
12. Install the cuff end of the vacuum fan hose onto the tube end of the smaller half of the filter box assembly (1). (Refer to FIG. 4)

NOTE: The vacuum hose can be shortened depending on the battery size. Shorten the vacuum hose as required.

NOTE: If roll-out batteries are used, remove the small half of the air box before remove the battery.

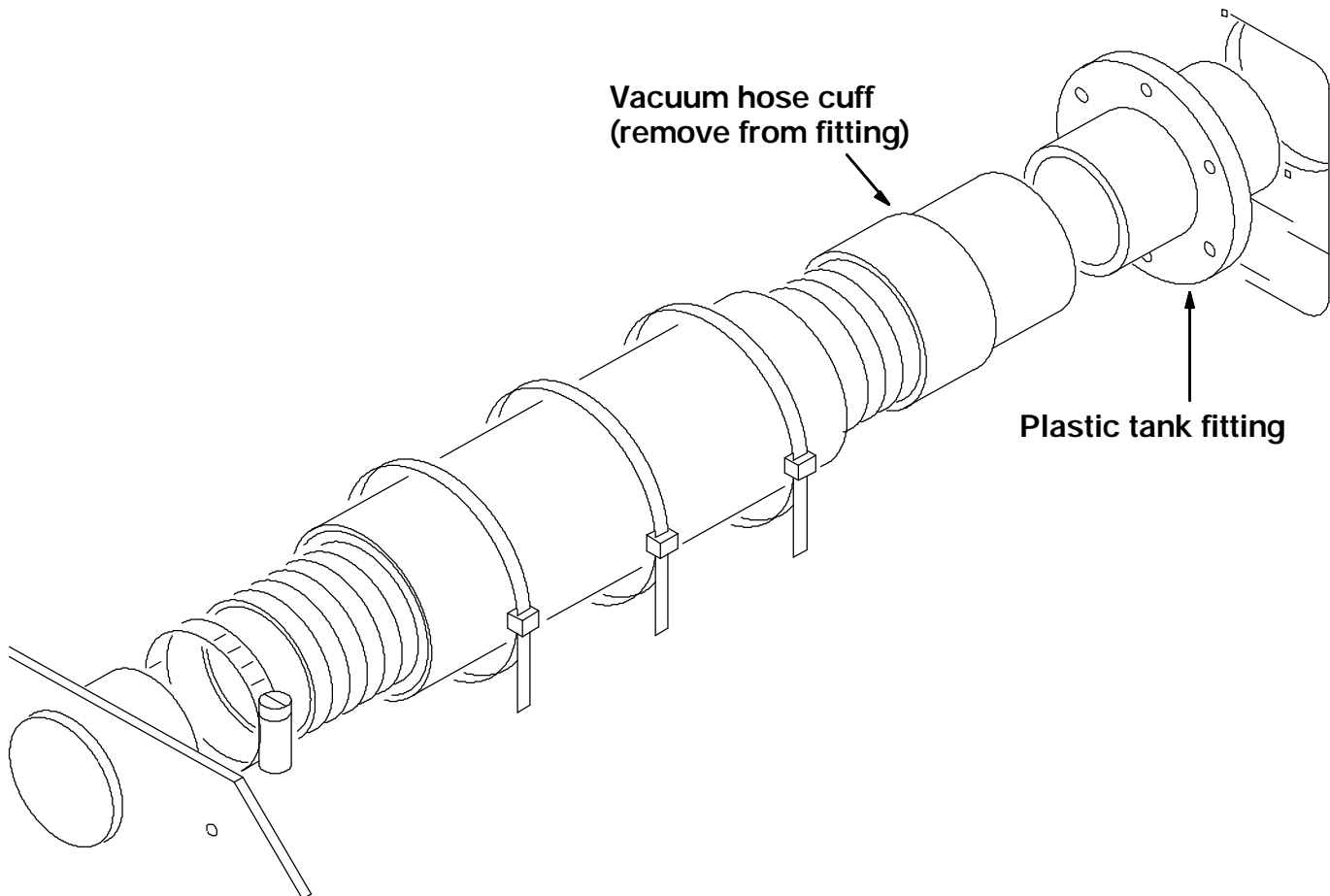


FIG. 1 - Remove Vacuum Hose Cuff From Plastic Tank Fitting

TO CLEAN THE FILTER:

FOR SAFETY: Before leaving or servicing machine, stop on level surface and set parking brake. Then turn off machine and remove key.

1. Unscrew one of the knobs completely. Unscrew the other knob half way.
2. Remove the small half of the air box from the assembly.
3. Pull the filter out of the bigger half of the filter box assembly.
4. Rinse the filter with a garden hose and blow dry with low air pressure. Reinstall.

NOTE: Every time the filter is cleaned, also clean the wire mesh round screen in the cover of the solution tank.

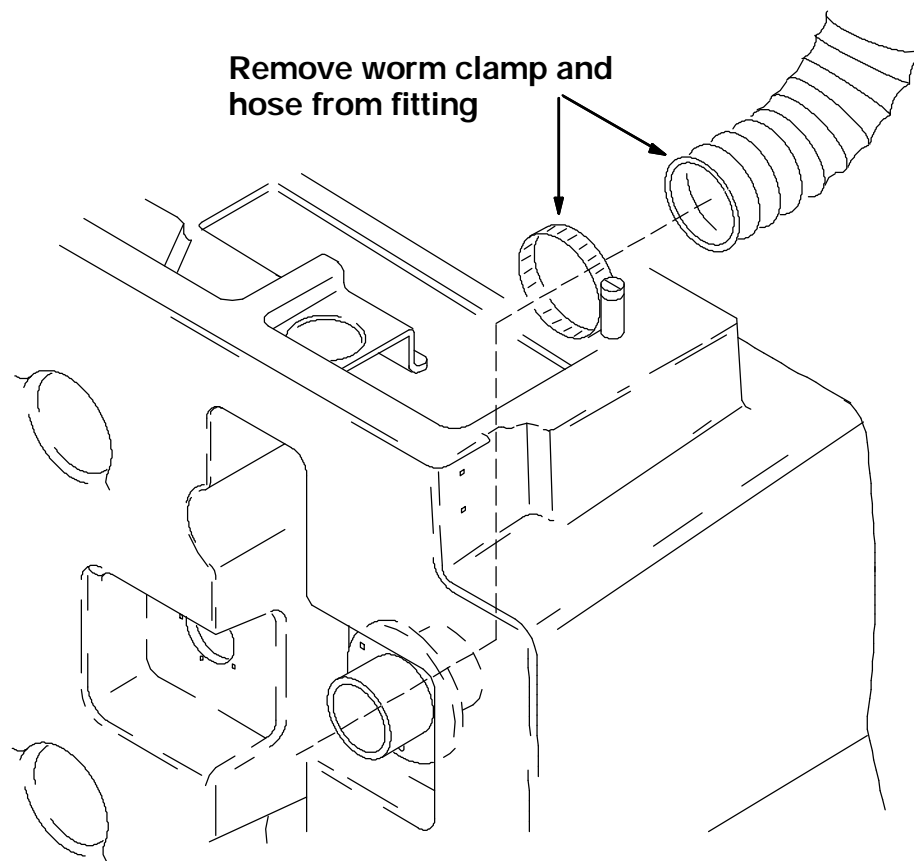


FIG. 2 - Remove Worm Drive Clamp And Hose From Fitting Inside Tank

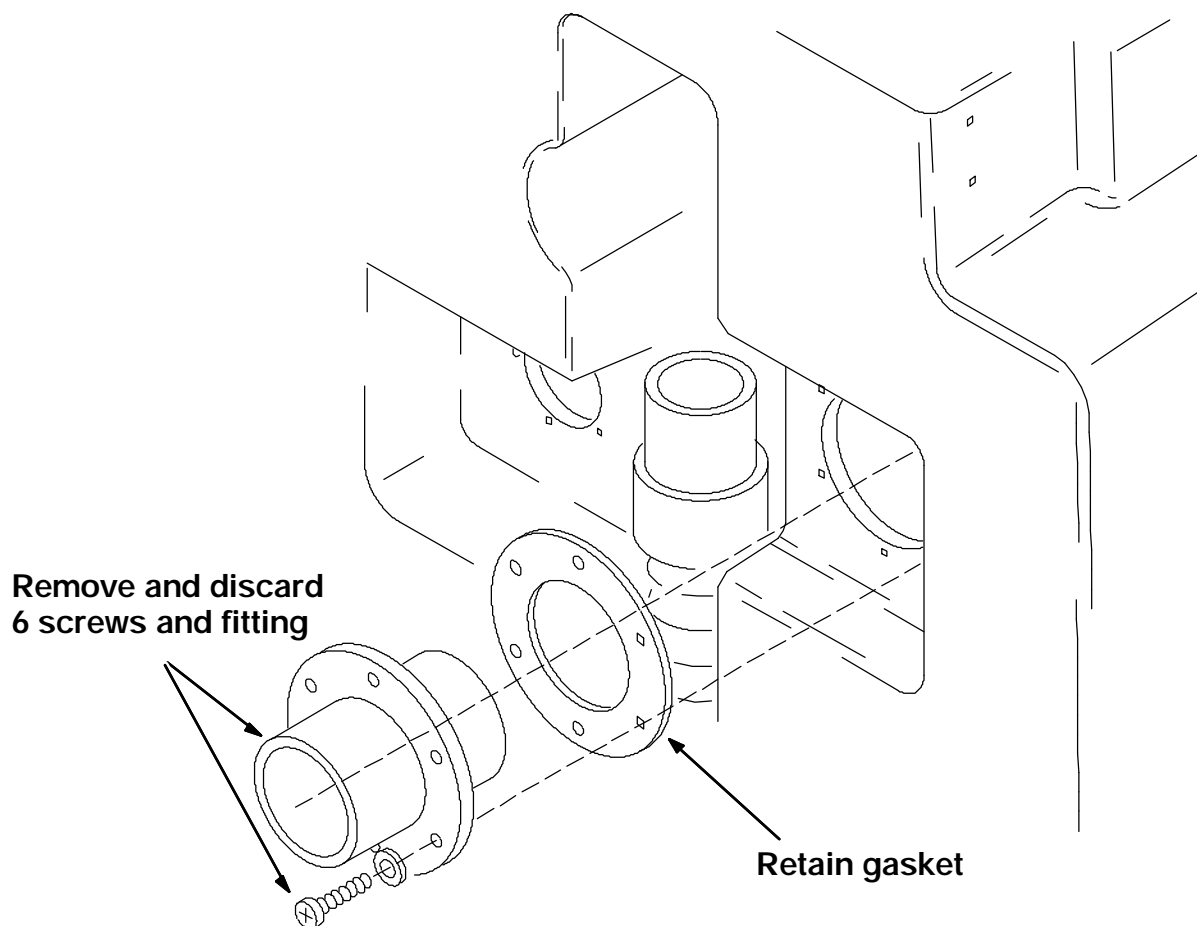


FIG. 3 - Remove Six Screws And Fitting From Tank -- Save Screws And Gasket

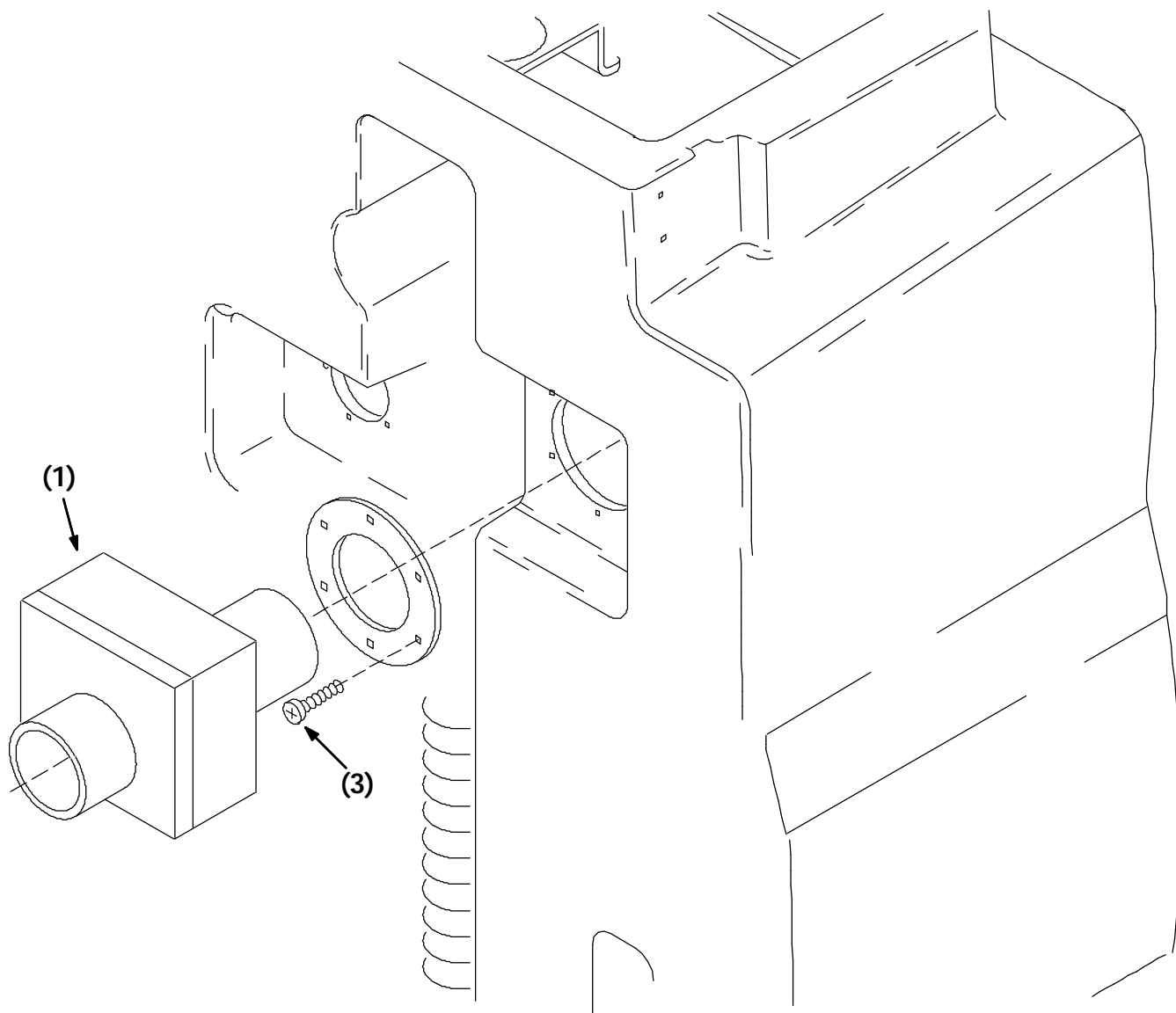


FIG. 4 - Filter Box Assembly And Installation
BILL OF MATERIALS FOR FILTER AIR BOX KIT 370106

Ref.	TENNANT Part No.	Description	Qty.
1	370123	Air filter box assembly	1
2	370113	Filter	1
3	24196	Hex screw, 20mm, SS	4
4	07514	Star washer	4

TENNANT COMPANY
P. O. Box 1452
Minneapolis, MN 55440-1452