



# INSTRUCTION BULLETIN

No. 340073  
Machine: 8200 / 8210  
Published: 1-98/00  
System: OPTIONS

**NOTE: DO NOT DISCARD the Parts List from the Instruction Bulletin. Place the Parts List in the appropriate place in your machine manual for future reference. Retaining the Parts List will make it easier to reorder individual parts and will save you the cost of ordering an entire kit.**

*NOTE: Numbers in parenthesis ( ) are reference numbers for parts listed in Bill of Materials.*

Installation instructions for kit number 364878.

## **SYNOPSIS / PROBLEM:**

This kit contains the parts needed to install a vacuum wand kit on the model 8200 / 8210 sweeper/scrubber.

Please follow step-by-step instructions.

## **SPECIAL TOOLS / CONSIDERATIONS:**

(Estimated time to complete: 1/2 hour).

## **INSTALLATION OF VACUUM WAND ONTO ENGINE COVER:**

(Refer to FIG. 1)

1. Place a washer (8) onto a pan screw (7) and slide the screw through the hole in one of the hose retainers on the hose mounting panel (10). (Refer to FIG. 1)

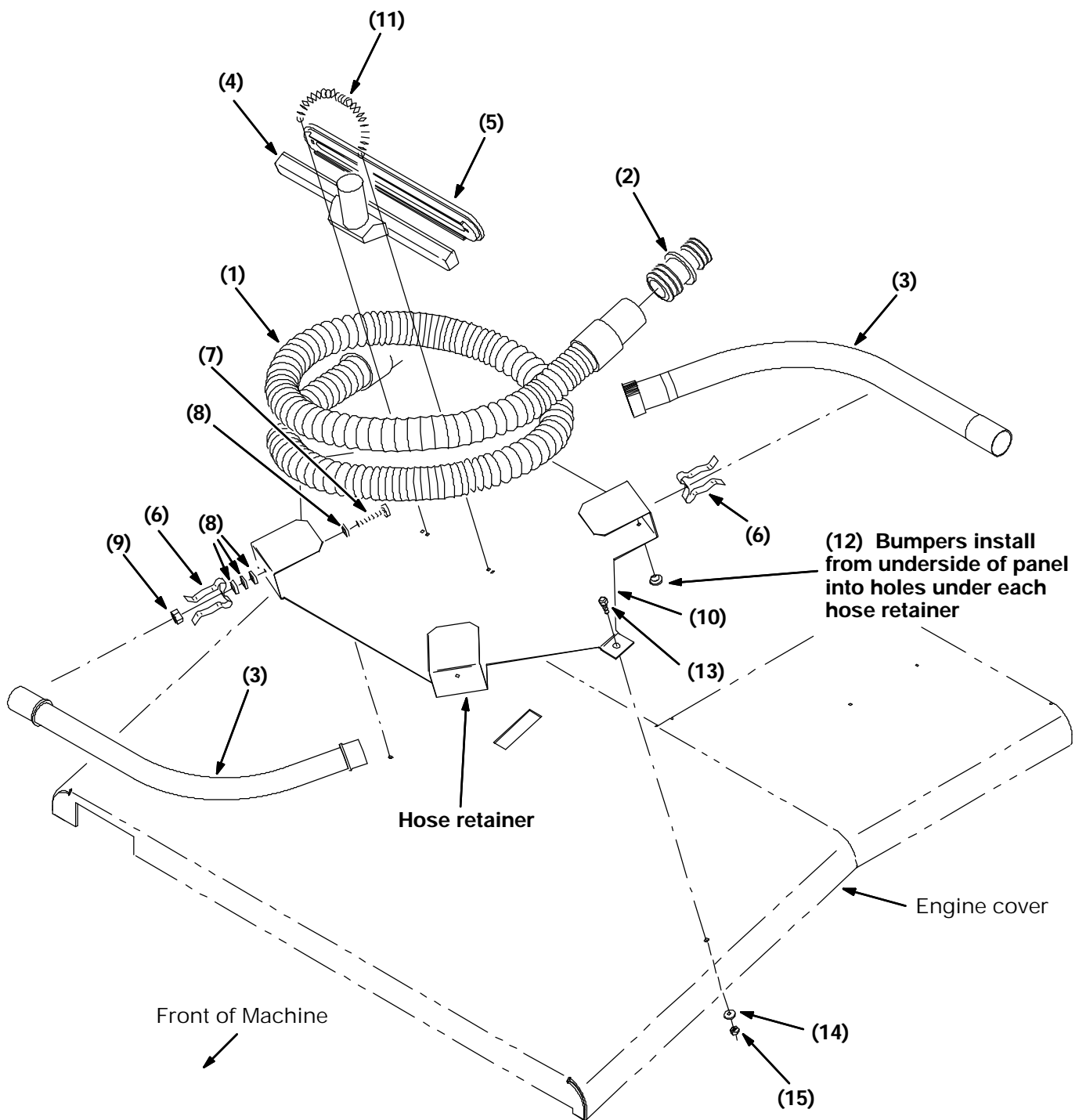
**FOR SAFETY: Before leaving or servicing machine, stop on level surface and set parking brake. Then turn off machine and remove key.**

*NOTE: The screw end should point away from the center of the panel.*

2. Place three washers, a fingerclip (6), and a nut (9) onto the screw. (Refer to FIG. 1).
3. Tighten the nut and repeat the above process three more times to install all of the fingerclip clips.
4. Install a bumper (12) into each hole under the four hose retainers on the hose mounting panel. (Refer to FIG. 1).
5. Install the hose mounting panel into the pre-drilled holes on the engine cover using the hardware (13), (14), and (15) provided. Tighten all hardware. (Refer to FIG. 1).

*NOTE: The washers and nuts install underneath the engine cover. (Refer to FIG. 1).*

6. Secure the squeegee nozzle and shoe (4) and (5) onto the center of mounting panel using the spring as shown in **FIG. 1**.
7. Snap both pieces of the metal wand (3) into the fingerclip clips. (Refer to FIG. 1).
8. Slide the fitting (2) onto the end of the hose (1) and wind the hose around the squeegee nozzle and shoe, then secure it underneath the hose retainers. (Refer to FIG. 1).



**FIG. 1 - Installation of Vacuum Wand onto Engine Cover**

**BILL OF MATERIALS FOR KIT NUMBER 364878**

<b>Ref.</b>	<b>TENNANT Part No.</b>	<b>Description</b>	<b>Qty.</b>
1	86767	Hose & 2-cuff assmy., vinyl 1.5ID 90L	1
2	48609	Fitting, plastic str. 24BM/32BM	1
3	63448	Wand, metal 2 pcs	1
4	63451	Nozzle, plastic wand 14.0LG	1
5	63430	Shoe, plastic-squeegee 14IN	1
6	67004	Clip, finger-grip	4
7	24265	Screw, PANSSM 4 x 0.7 16	4
8	19065	Washer, flat 08	16
9	02850	Nut, HXLOCNYLYN M 4 x 0.7	4
10	14951	Panel, mtg, hose	1
11	50304	Spring	1
12	29233	Bumper	4
13	06942	Screw, HEX M 6 x 1.0 16	2
14	32490	Washer, flat 0.25 hard	2
15	08708	Nut, HXLOCNYLYN M 6 x 1.0	2

**TENNANT COMPANY**  
P. O. Box 1452  
Minneapolis, MN 55440-1452