



INSTRUCTION BULLETIN

No. 340066

Machine: 355, 385, 385LH

Published: 9-97/00

System: SWEEPING

NOTE: DO NOT DISCARD the Parts List from the Instruction Bulletin. Place the Parts List in the appropriate place in your machine manual for future reference. Retaining the Parts List will make it easier to reorder individual parts and will save you the cost of ordering an entire kit.

NOTE: Numbers in parenthesis () are reference numbers for parts listed in Bill of Materials.

Installation Instructions for Kit number 374583 and 374584 (385LH)

SYNOPSIS / PROBLEM:

This kit contains the parts needed to replace the side brush lift bracket on the model 355/385 sweeper. This new bracket will increase the side brush lift bracket reliability.

Please follow step-by-step instructions.

SPECIAL TOOLS / CONSIDERATIONS: None (Estimated time to complete: 2 hours)

INSTALLATION:

(Refer to FIG. 1, 2, and 3)

1. Remove the old side brush lift bracket. Make sure to retain the snap ring and spacer washers.
2. Raise the hopper and engage the prop arm.
3. Remove the cap screw holding the lift arm pin (on the side brush side of machine) to machine lintel.
4. Disengage the prop arm and lower the hopper.

FOR SAFETY: Before leaving or servicing machine, stop on level surface and set parking brake. Then turn off machine and remove key.

5. Support the side brush side of the hopper with an overhead crane or a floor jack.
6. Remove the existing lift arm pin. Use the access hole in the lintel and a steel punch to knock the pin out of the mount holes.
7. Install the new lift arm pin (2) making sure to line up the retaining bolt hole in the pin with the retaining bolt mount hole in the lintel. .
8. Loosely install the cap screw that was removed in step 3.
9. Apply grease to pin bearing surface.
10. Install the new side brush lift bracket (1). Make sure to install the spacer washers on the outside of the new bracket (1). Install the snap ring.
11. Start the machine and raise the hopper. Engage the prop arm.
12. Tighten the lift arm pivot pin retaining cap screw to 15 - 20 ft lbs.
13. Disengage the prop arm and lower the hopper.

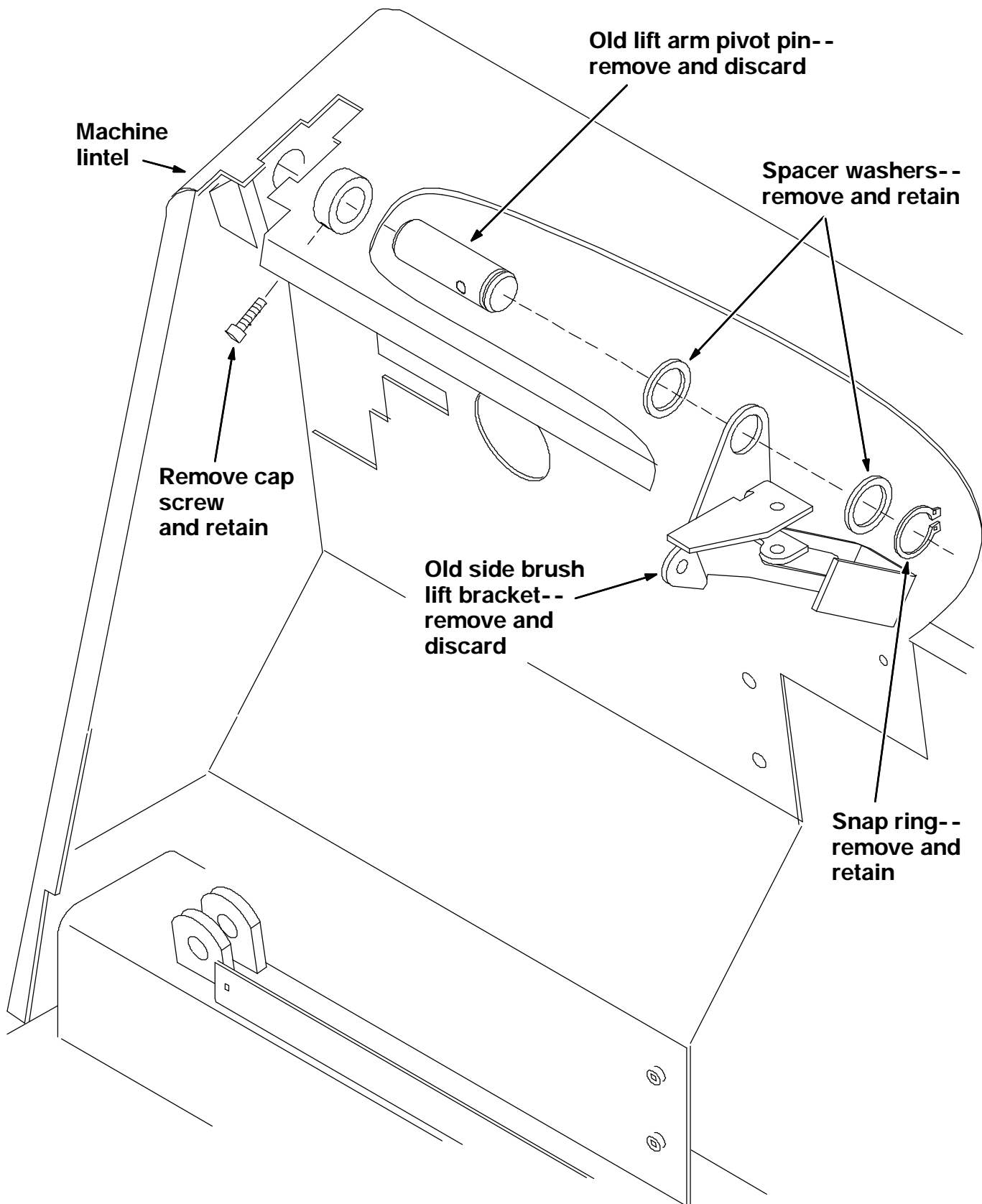


FIG. 1 - Old Style Side Brush Lift Bracket (remove and discard)

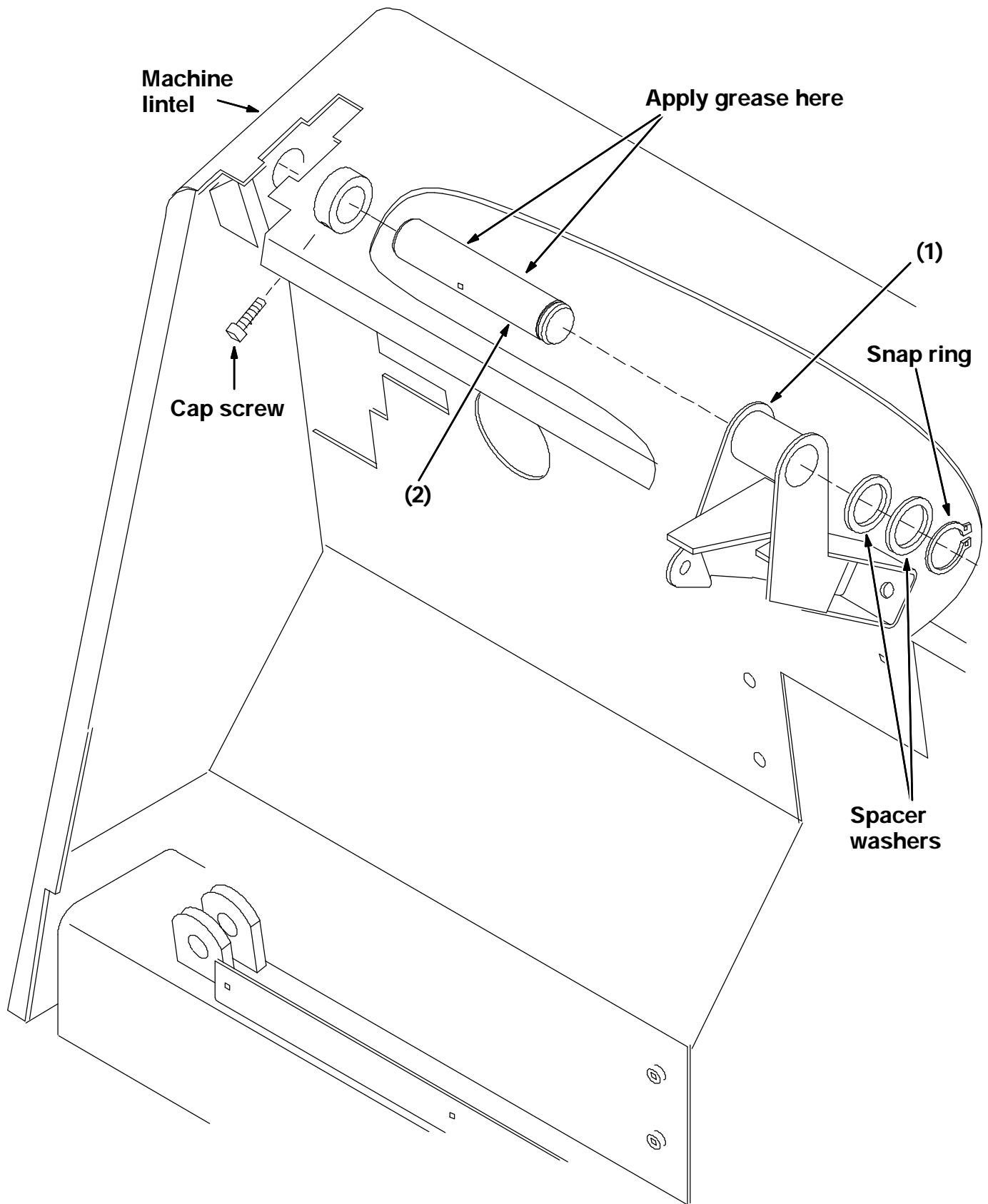


FIG. 2 - New Style Side Brush Lift Bracket And Spacers.

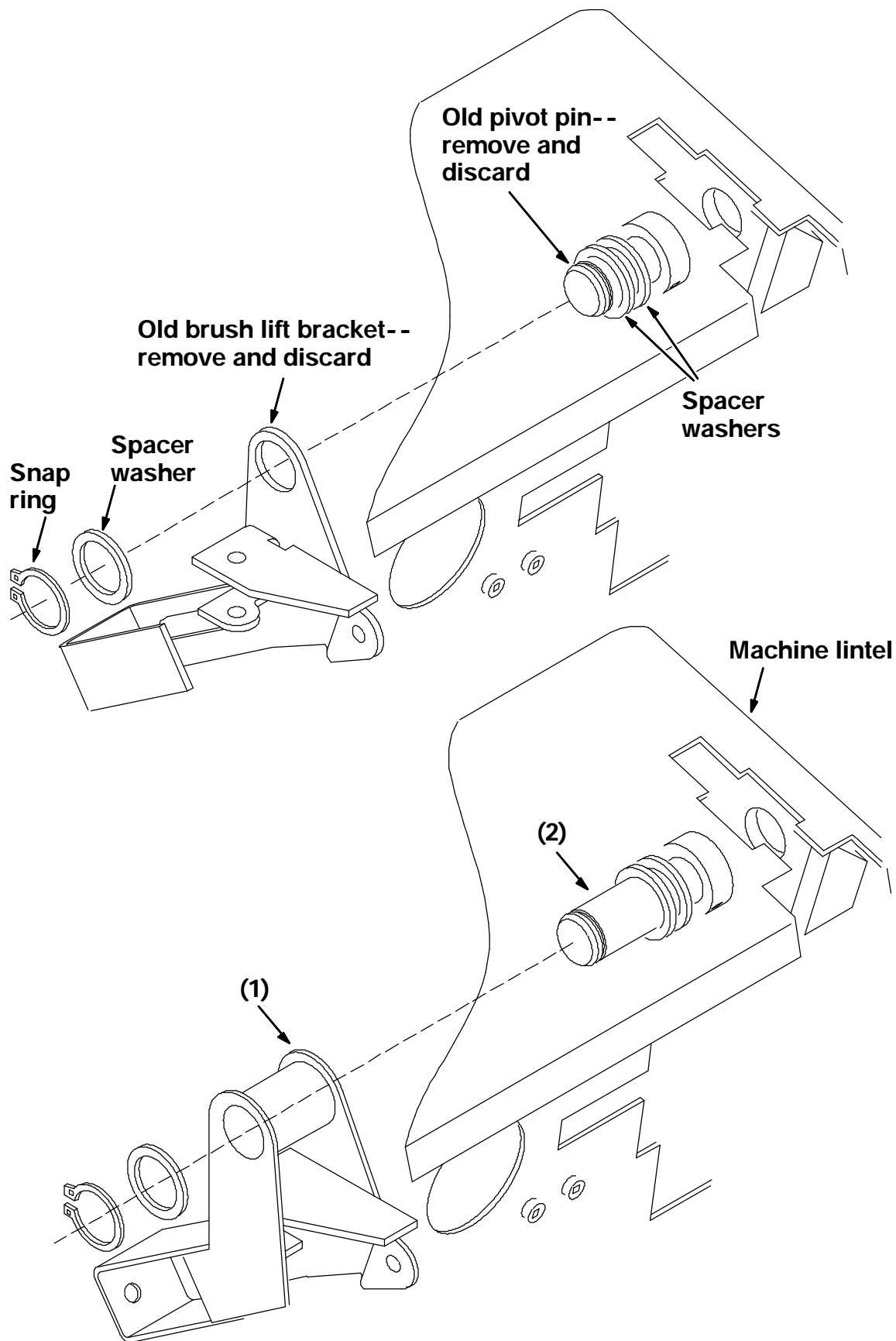


FIG. 3 - 385 LH Style Side Brush Lift Bracket And Spacers.

BILL OF MATERIALS FOR SIDE BRUSH LIFT BRACKET KIT 374583 (RH)

Ref.	TENNANT Part No.	Description	Qty.
1	374573	Bracket, lift, side brush	1
2	55462	Pin, 6.1 inch	1

BILL OF MATERIALS FOR SIDE BRUSH LIFT BRACKET KIT 374584 (LH)

Ref.	TENNANT Part No.	Description	Qty.
1	374578	Bracket, lift, side brush	1
2	55462	Pin, 6.1 inch	1

TENNANT COMPANY
P. O. Box 1452
Minneapolis, MN 55440-1452