



INSTRUCTION BULLETIN

No. 340060
Machine: 7200
Published: 7-97/00
System: CHASSIS

NOTE: DO NOT DISCARD the Parts List from the Instruction Bulletin. Place the Parts List in the appropriate place in your machine manual for future reference. Retaining the Parts List will make it easier to reorder individual parts and will save you the cost of ordering an entire kit.

NOTE: Numbers in parenthesis () are reference numbers for parts listed in Bill of Materials.

Installation Instructions for Kit number 223557

SYNOPSIS / PROBLEM:

This kit contains the parts needed to install a non-marking front drive tire kit on the model 7200 scrubber. Please follow step-by-step instructions.

SPECIAL TOOLS / CONSIDERATIONS: None

(Estimated time to complete: 3 hours)

PREPARATION:

(Refer to FIG. 1)

FOR SAFETY: Before leaving or servicing machine, stop on level surface and set parking brake. Then turn off machine and remove key.

1. Raise the seat support and disconnect battery cables from machine.



WARNING: Always disconnect battery cables from machine before working on electrical components.

2. Raise the front of the machine and place jack stands under the frame.
3. Mark and remove the electrical cables leading to the front drive motor. (Refer to FIG. 1)
4. Remove the four hex screws holding the outer plate, motor, and planetary gear box to the main drive assembly. (Refer to FIG. 1)
5. Pull the planetary gear box, outer plate, and motor out of the drive wheel and away from the drive assembly. (Refer to FIG. 1)
6. Go to the other side of the drive assembly and remove the hub cap. This will expose the outer bearing, hex sleeve, and lock bolt. (Refer to FIG. 1)
7. Remove the lock bolt.
(this is a right-hand thread screw) (Refer to FIG. 1)
8. Remove the hex sleeve and outer bearing cone assembly.
(this is a left-hand thread nut) (Refer to FIG. 1)
9. The inner bearing, axle shaft, and tire/wheel assembly can now be removed from the drive assembly. (Refer to FIG. 1)

INSTALLATION:

(Refer to FIG. 1)

1. Reinstall the new tire/wheel assembly (1), new washer (3), new seal (4), and new bearing cone (5) in the drive assembly. Make sure the inner and outer wheel bearings are completely greased before re-assembly. (Refer to FIG. 1)
2. Reinstall the outer bearing and hex sleeve assembly. **(this is a left-hand thread nut)** Tighten to at least 100 ft lbs and then back off the hex sleeve to 0 ft lbs. Re-torque the hex sleeve to 30 ft lbs. (Refer to FIG. 1)
3. Install the lock bolt in the end of the hex sleeve. Tighten the lock bolt to 200 Nm (150 ft lbs) while holding the hex sleeve from turning. (Refer to FIG. 1)

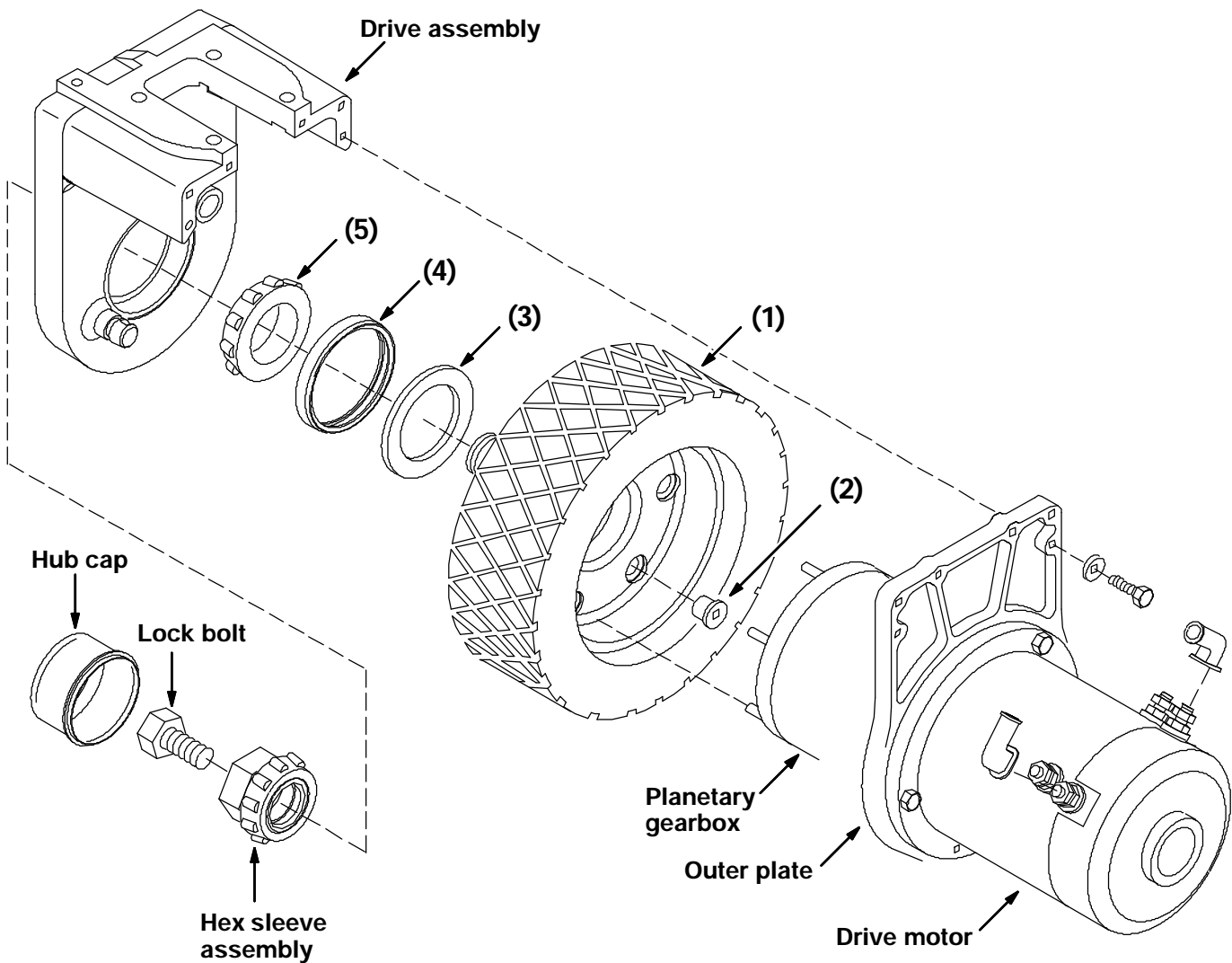


FIG. 1 - Front Drive Wheel Assembly

4. Reinstall the hub cap in the drive assembly. (Refer to FIG. 1)
5. Go to the other side of the drive assembly and install the six new bushings (2) in the new front wheel assembly (1). Install the planetary gear box, outer plate, and motor assembly into the new wheel assembly and onto the pins of the drive assembly. (Refer to FIG. 1)

6. Install the four hex screws and washers. Tighten to 18 - 24 Nm (15 - 20 ft lbs).
(Refer to FIG. 1)
7. Reconnect the electrical cables to the front drive motor. (Refer to FIG. 1)
8. Remove the jack stands and lower the machine.
9. Reconnect the battery cables.
10. Drive the machine and check for proper operation.

BILL OF MATERIALS FOR NON-MARKING FRONT TIRE KIT 223557

Ref.	TENNANT Part No.	Description	Qty.
1	223243	Wheel assembly, front, non-marking	1
2	223181	Urethane isolator bushing	6
3	223193	Washer	1
4	223631	Seal	1
5	223168	Bearing cone	1

TENNANT COMPANY
P. O. Box 1452
Minneapolis, MN 55440-1452