



INSTRUCTION BULLETIN

No. 340059
Machine: 7200 / T15
Published: 09-2009
Rev: 04

NOTE: DO NOT DISCARD the Parts List from the Instruction Bulletin. Place the Parts List in the appropriate place in the machine manual for future reference. Retaining the Parts List will make it easier to reorder individual parts and will save the cost of ordering an entire kit.

NOTE: Numbers in parenthesis () are reference numbers for parts listed in Bill of Materials.

Installation Instructions for Kit number 223282

SYNOPSIS:

This kit contains the parts needed to install a power wand kit onto the 7200 / T15 scrubber.
Please follow step-by-step instructions.

SPECIAL TOOLS / CONSIDERATIONS: None

(Estimated time to complete: 3 hours-standard 7200 / T15, 4 hours-7200 / T15 w/FaST)

PREPARATION:

1. Park the machine on a clean level surface.
2. Start the machine and lower the rear squeegee.
Turn off the machine.
3. Drain the solution and recovery tanks.

FOR SAFETY: Before leaving or servicing the machine, stop on level surface, set the parking brake, turn off the machine, and remove the key.

4. Disconnect battery cables from machine.



WARNING: Always disconnect battery cables from machine before working on electrical components.

5. Open the electrical control panel.

INSTALLATION:

1. Install the switch (3), switch boot (33), circuit breaker (1), and circuit breaker boot (2) into the electrical panel. Refer to Fig. 1.
2. Connect the switch (3) to wires 94/ORA, 13G/BLK, 9A/BRN, and 9/BRN. Refer to Fig. 7.
3. Connect the circuit breaker (1) to wires 9A/BRN and 6D/BLU. Refer to Fig. 7.
4. Close the electrical panel. Refer to Fig. 1.
5. Use the hole dimensions in Fig. 2 to mark and drill the power wand bag (6) mount holes in the top of the tank cover. Refer to Fig. 2.
6. Install the power wand bag (6) onto the top of the tank cover using the four plastic rivets (7). Refer to Fig. 3.
7. Remove the plastic plugs from the two holes on top of the right side machine bumper. Refer to Fig. 3.

8. Install the brush tray (16) on the right side bumper using two screws (17), fender washers (19), and nuts (18). Hand tighten hardware. Refer to Fig. 3.
9. Install the power wand bracket (8) on the seat support frame using two screws (10), washers (12), and nuts (11). Hand tighten hardware. Refer to Fig. 3.
10. Install the larger part of the flex draw latch (13) onto the bracket (8) using two screws (15). Hand tighten hardware. Refer to Fig. 3.
11. Install the second bracket (9) onto the first bracket (8) using two screws (10), washers (12), and nuts (11). Hand tighten hardware. Refer to Fig. 3.
12. Install the smaller part of the flex draw latch (13) onto the bracket (9) using two screws (14). Hand tighten hardware. Refer to Fig. 3.
13. Install the 90° fitting (24) into the t-fitting (23). Refer to Fig. 4.
14. Install the shorter vinyl hose (30) onto the 90° fitting (24). Install and tighten one worm clamp (31). Refer to Fig. 4.
15. Cut the solution drain hose a few inches from the tank fitting. Install the new t-fitting (23) and two worm drive clamps (32) between the ends of the cut hose. Tighten the clamps. Refer to Fig. 4.
16. Install the longer vinyl hose (29) and one clamp (31) onto the outlet port on the new pump (20). Refer to Fig. 4.
17. Install the pump (20) into the machine using the two screws (22) and nuts (21). Route the vinyl hose (29) through the hose hole in the frame. Refer to Fig. 4.
18. Install one clamp (31) and the open end of the shorter vinyl hose (30) onto the inlet port of the new pump (2). Refer to Fig. 4.
19. Plug the new pump (20) into the main harness connector with 13V/BLK and 94/ORANGE wires. Refer to Fig. 4.
20. Install the bulkhead fitting (26) onto the mount bracket (25). Refer to Fig. 4.
21. Install the small straight fitting (28) into the bulkhead fitting (26). Hand tighten. Refer to Fig. 4.
22. Install the brass fitting (27) into the bulkhead fitting (26). Hand tighten. Refer to Fig. 4.
23. Install the open end of the longer vinyl hose (29) and one clamp (31) onto the straight fitting (28). Refer to Fig. 4.
24. Install the mount bracket onto the machine frame. Refer to Fig. 4.
25. Install the plastic straight fitting (5) into the power wand hose (4). Refer to Fig. 3 and Fig. 5.
26. Place the power wand hose assembly into the bag (6). Refer to Fig. 3 and Fig. 5.
27. Install the power wand brush (35) onto the power wand assembly (34). Refer to Fig. 6.
28. Use the draw latch (13) to secure the power wand assembly (34) onto the side of the machine. Refer to Fig. 6.

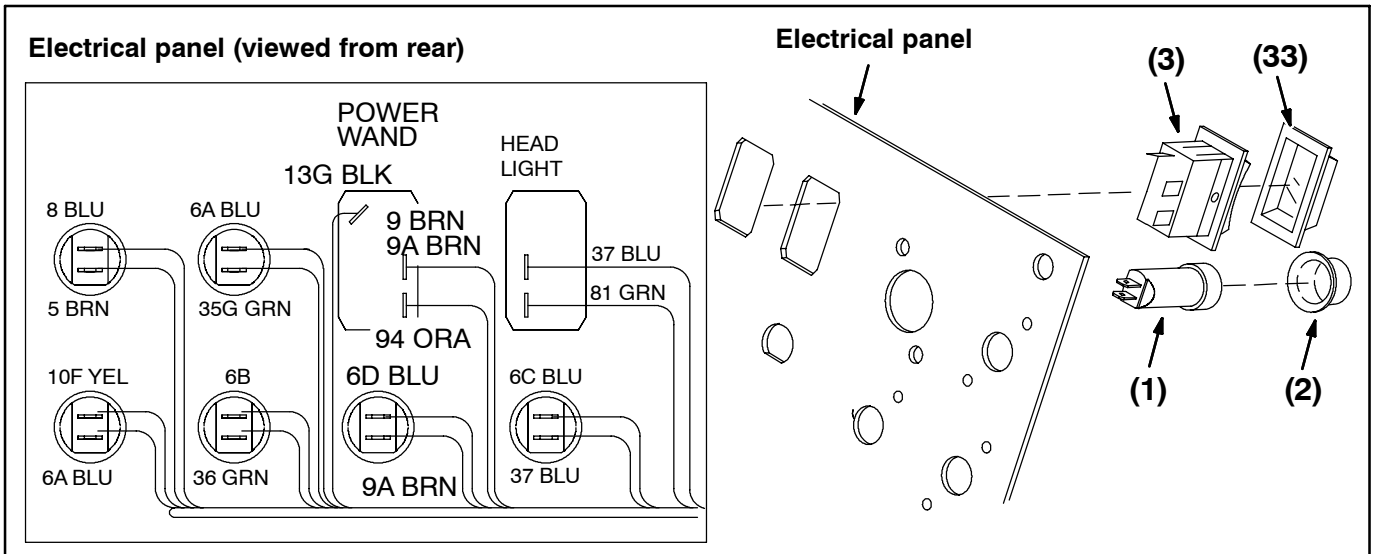


FIG. 1-Switch And Circuit Breaker

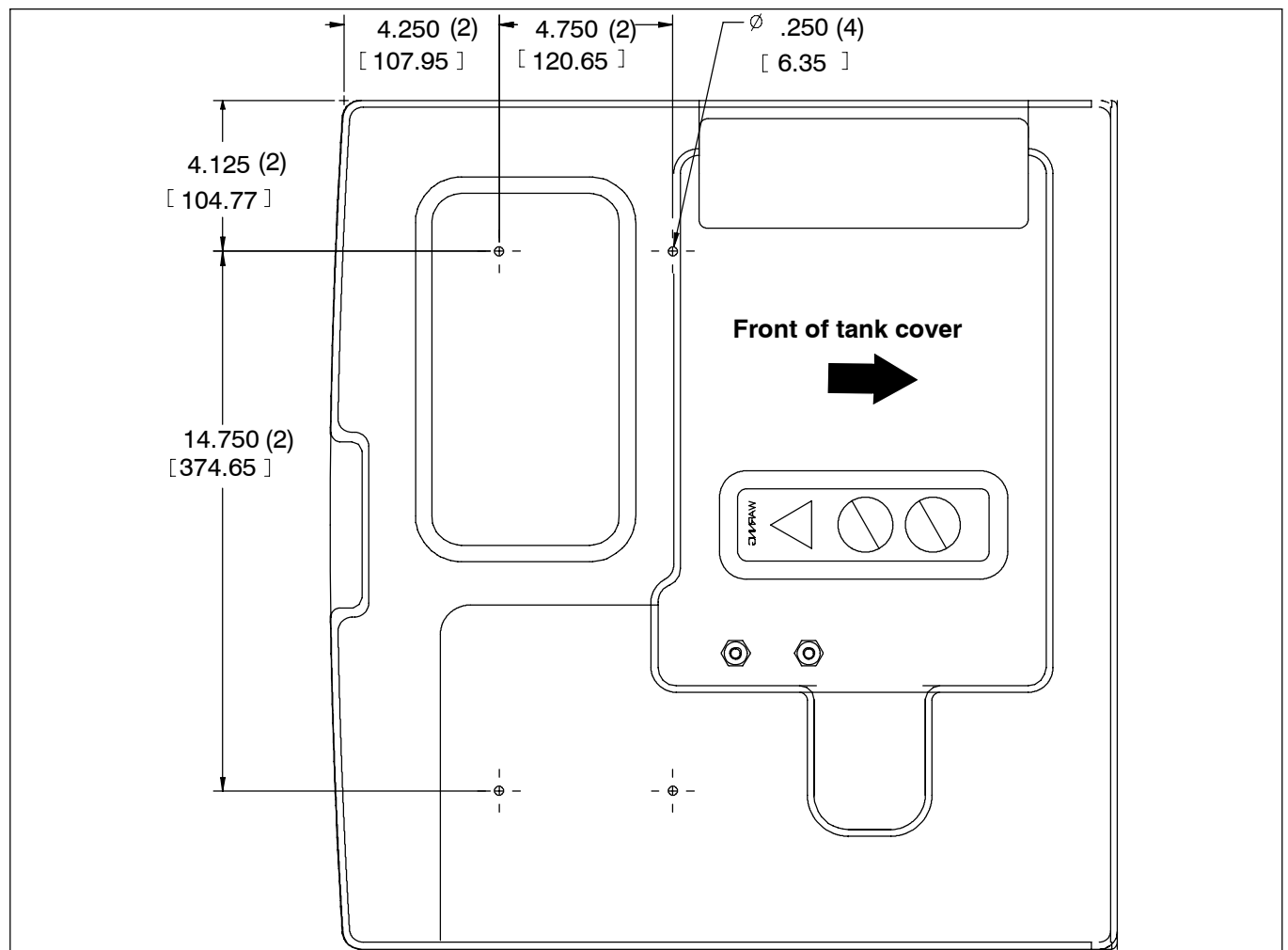


FIG. 2-Hose Bag Mounting Hole Dimensions

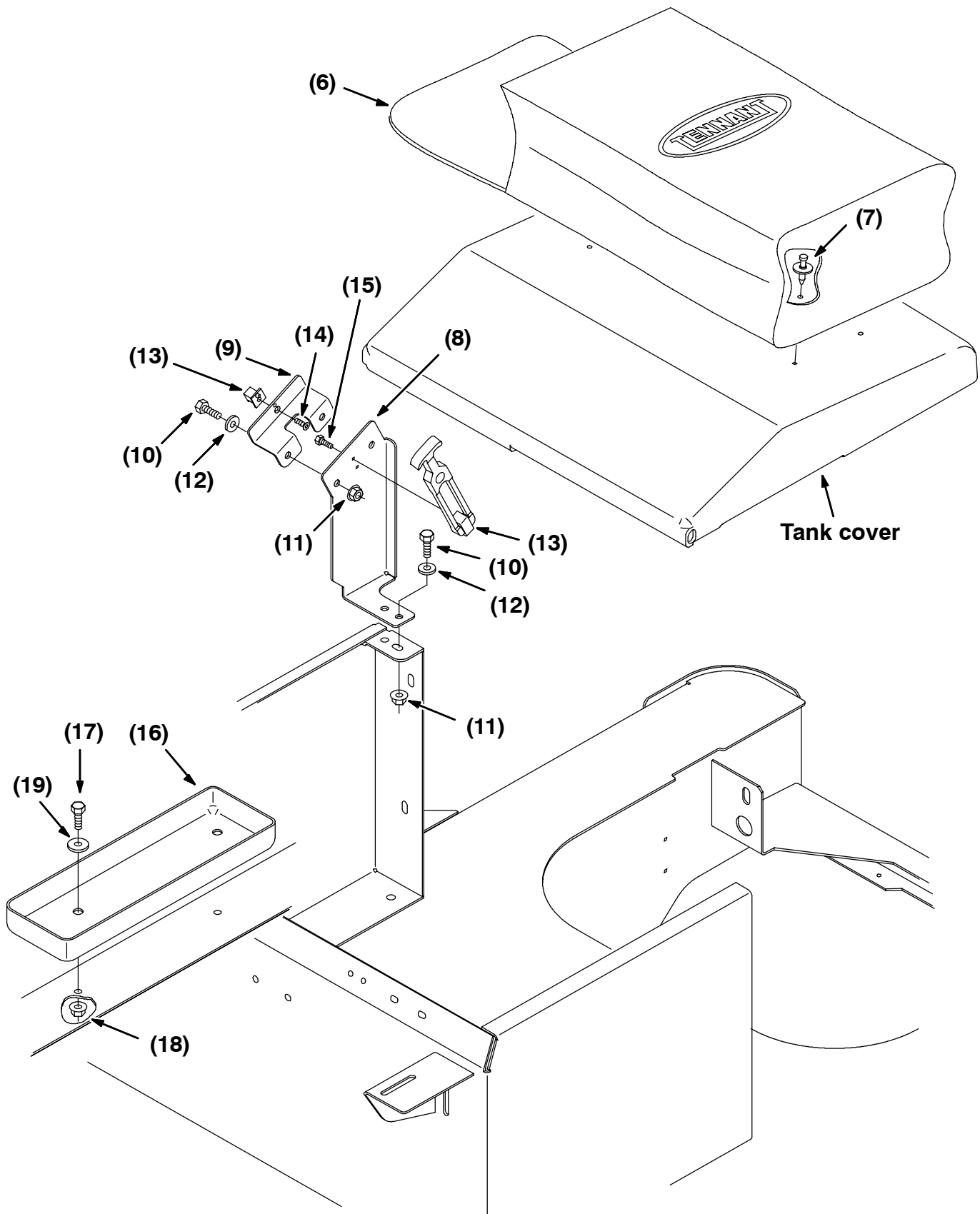


FIG. 3-Power Wand Mounting Assembly

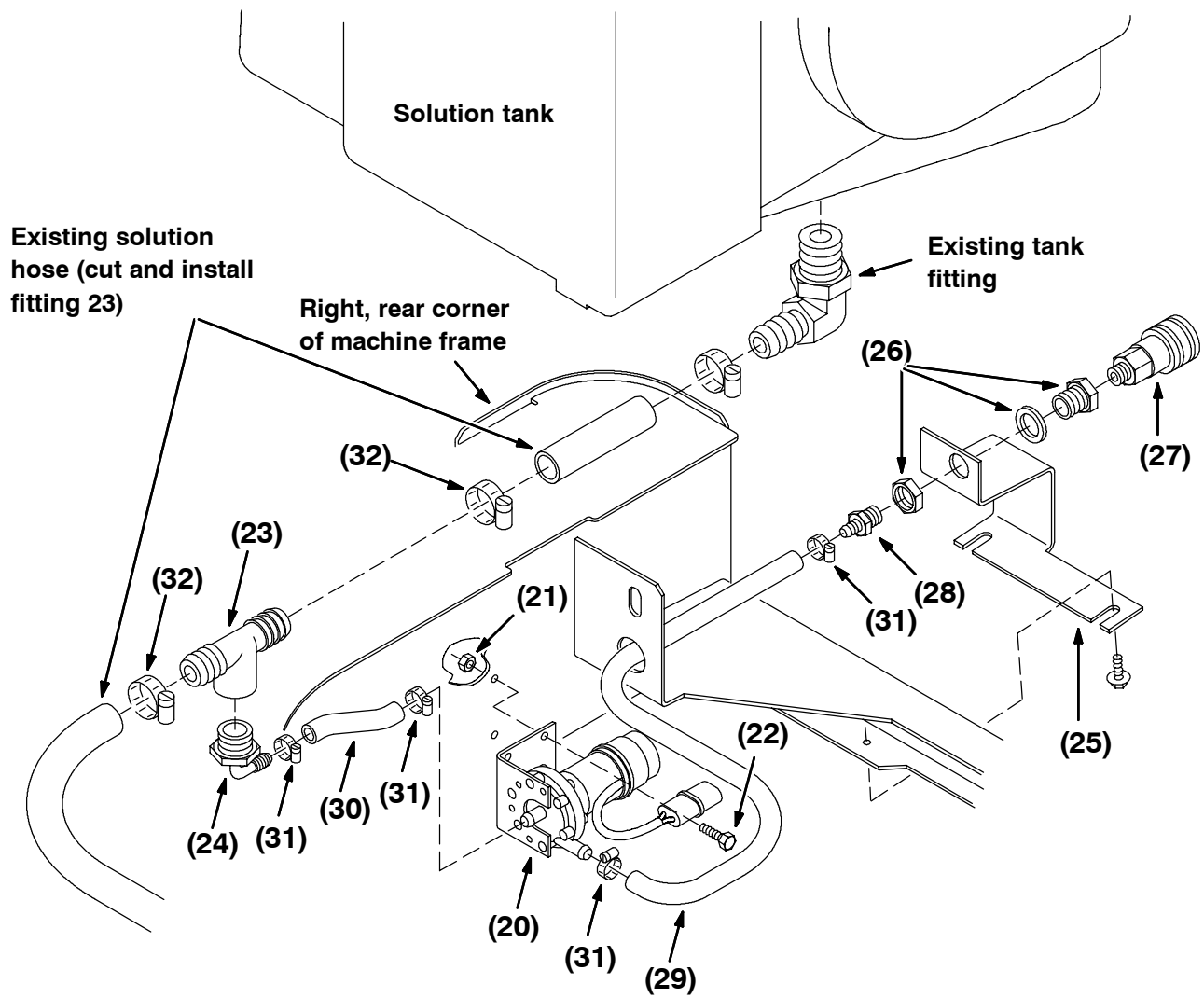


FIG. 4-Pump, Hoses, And Fittings

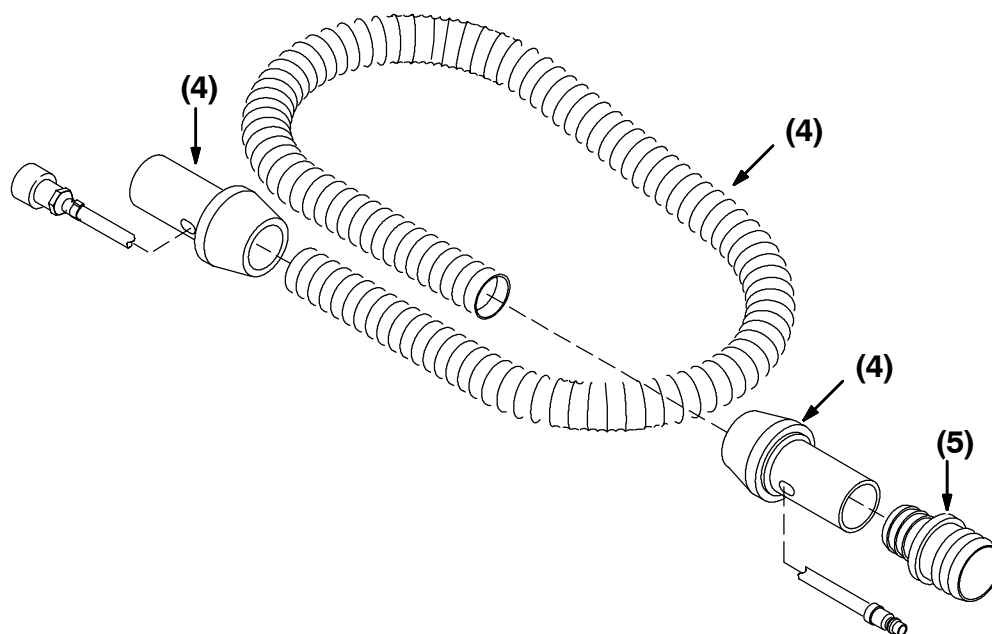


FIG. 5-Power Wand Hose Assembly

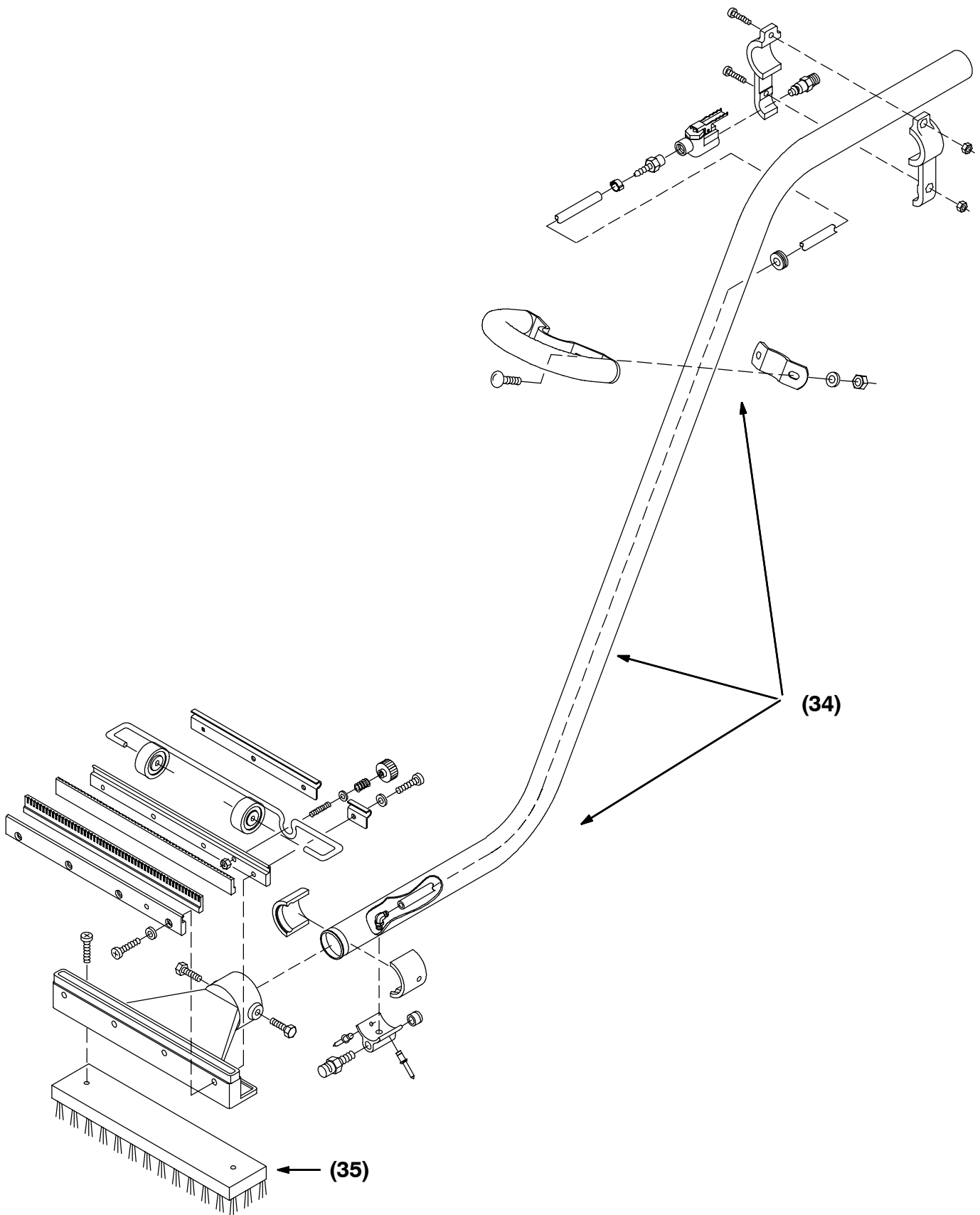
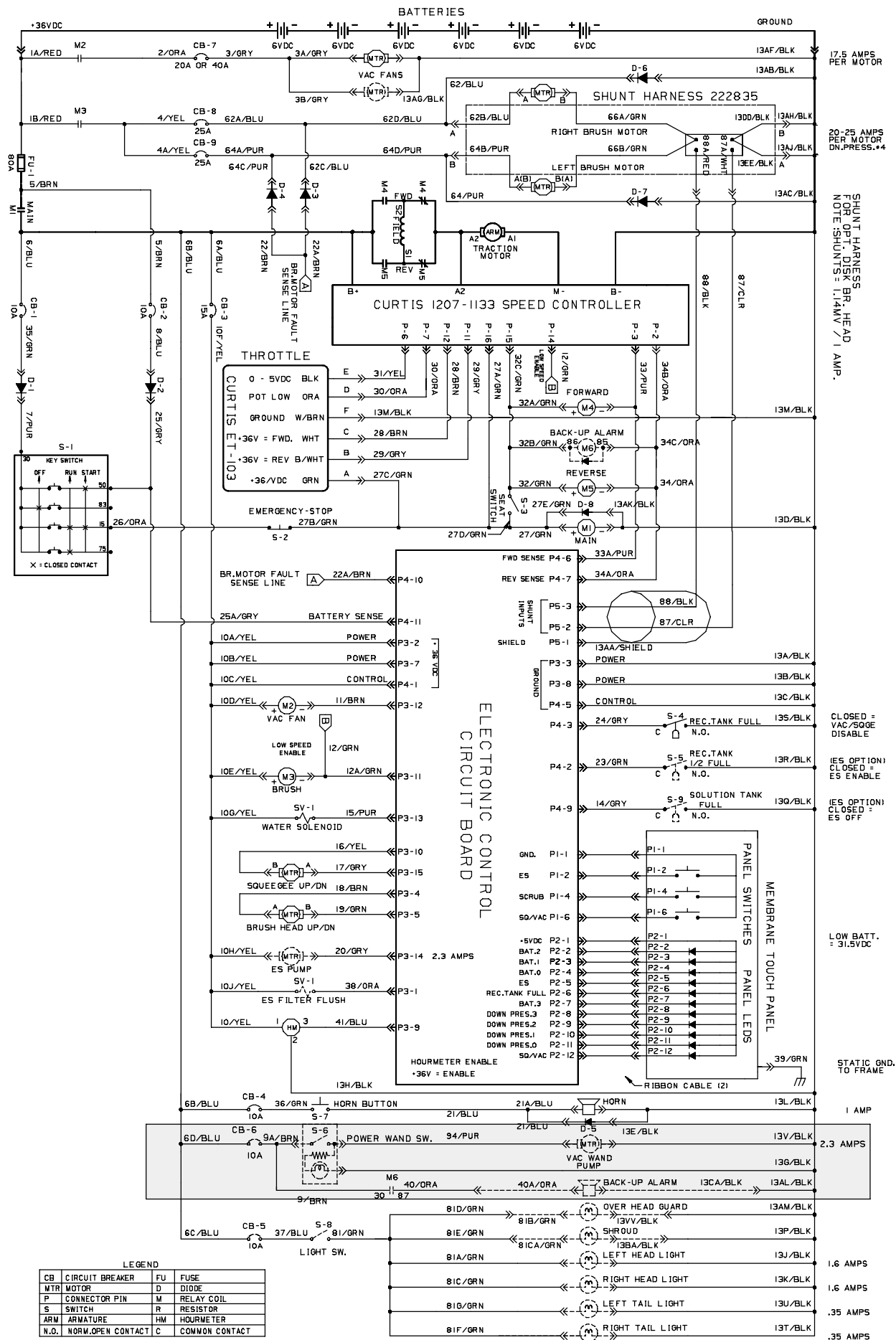


FIG. 6-Power Wand Assembly



Bill of Materials for Kit , CI, Wand, Power [7200]-223282

Ref.	TENNANT Part No.	Description	Qty.
1	57164	Circuitbreaker, 10.0A, Resetable	1
2	57751	Boot, Circuitbreaker	1
3	65557	Switch, Rocker, 28VDC 15A SPST On/Off	1
4	65341	Hose Assy, Wand, Power	1
5	12694	Fitting, Plstc, Str, BM24/BM24	1
6	65580	Bag, Power	1
7	72968	Rivet, Plstc, .250 X 0.898	4
8	223649	Bracket, Wldt, Wand, Power	1
9	223490	Bracket, Power Wand	1
10	16931	Screw, Hex, M8 X 1.25 X 20, 8.8	4
11	07791	Nut, Hex, Flng, M8 X 1.25	4
12	32491	Washer, Flat, 0.31 Std	4
13	223522	Latch, Flexible Draw	1
14	09120	Screw, Flt, M5 X 0.8 X 16, 10.9	2
15	09252	Screw, Hex, M5 X 0.8 X 20, 8.8	2
16	223492	Tray, Brush	1
17	16931	Screw, Hex, M8 X 1.25 X 20, 8.8	2
18	07791	Nut, Hex, Flng, M8 X 1.25	2
19	30013	Washer, Flat, 0.31 Fender	2
20	223496	Pump, Water, 36VDC, GPM PSI	1
21	09739	Nut, Hex, Lock, M5 X 0.80, NL, SS	2
22	09738	Screw, Hex, M5 X 0.8 X 12, SS	2
23	76075	Fitting, Plstc, Tee, BM12/PF12/BM12	1
24	79484	Fitting, Plstc, E90, BM06/PM12, Nyl	1
25	223521	Bracket, Mtg	1
26	78122	Fitting, Brs, Str, PF04/PF04, BH	1
27	65342	Fitting, Brass, QDC, PM04/QF06	1
28	49186	Fitting, Plstc, Str, BM06/PM04, Nyl	1
29	223523	Hose, PVC, Brd, 0.38ID, 0.60OD 13.00L	1
30	223640	Hose, PVC, Brd, 0.38ID, 0.60OD 3.50L	1
31	43844	Clamp, Hose, Wormdrive, 0.25-0.62, .31W	4
32	11399	Clamp, Hose, Wormdrive, 0.50-1.06, .50W	2
33	57807	Cover, Seal, Rocker, Switch	1
34	65340	Wand Assy, Power	1
35	65582	Brush, Power Wand, w/Fastener, Abr	1

TENNANT COMPANY
 P. O. Box 1452
 Minneapolis, MN 55440-1452