



## INSTRUCTION BULLETIN

No. 340044  
Machine: 6400E  
Published: 5-97/00  
System: SWEEPING

**NOTE: DO NOT DISCARD the Parts List from the Instruction Bulletin. Place the Parts List in the appropriate place in your machine manual for future reference. Retaining the Parts List will make it easier to reorder individual parts and will save you the cost of ordering an entire kit.**

*NOTE: Numbers in parenthesis ( ) are reference numbers for parts listed in Bill of Materials.*

Installation Instructions for Kit number 366088.

### SYNOPSIS / PROBLEM:

This kit contains the parts needed to install a brush stop kit on a model 6400 *electric* sweeper. The kit is designed for a machine that has a main brush that DOES NOT stop when in the raised position.

Please follow step-by-step instructions.

### SPECIAL TOOLS / CONSIDERATIONS:

(Estimated time to complete: 1 hour).

### INSTALLATION OF BRUSH STOP KIT:

(Refer to FIG. 1 and 2)

1. Open the brush door on the left side of the machine.

**FOR SAFETY: Before leaving or servicing machine, stop on level surface and set parking brake. Then turn off machine and remove key.**

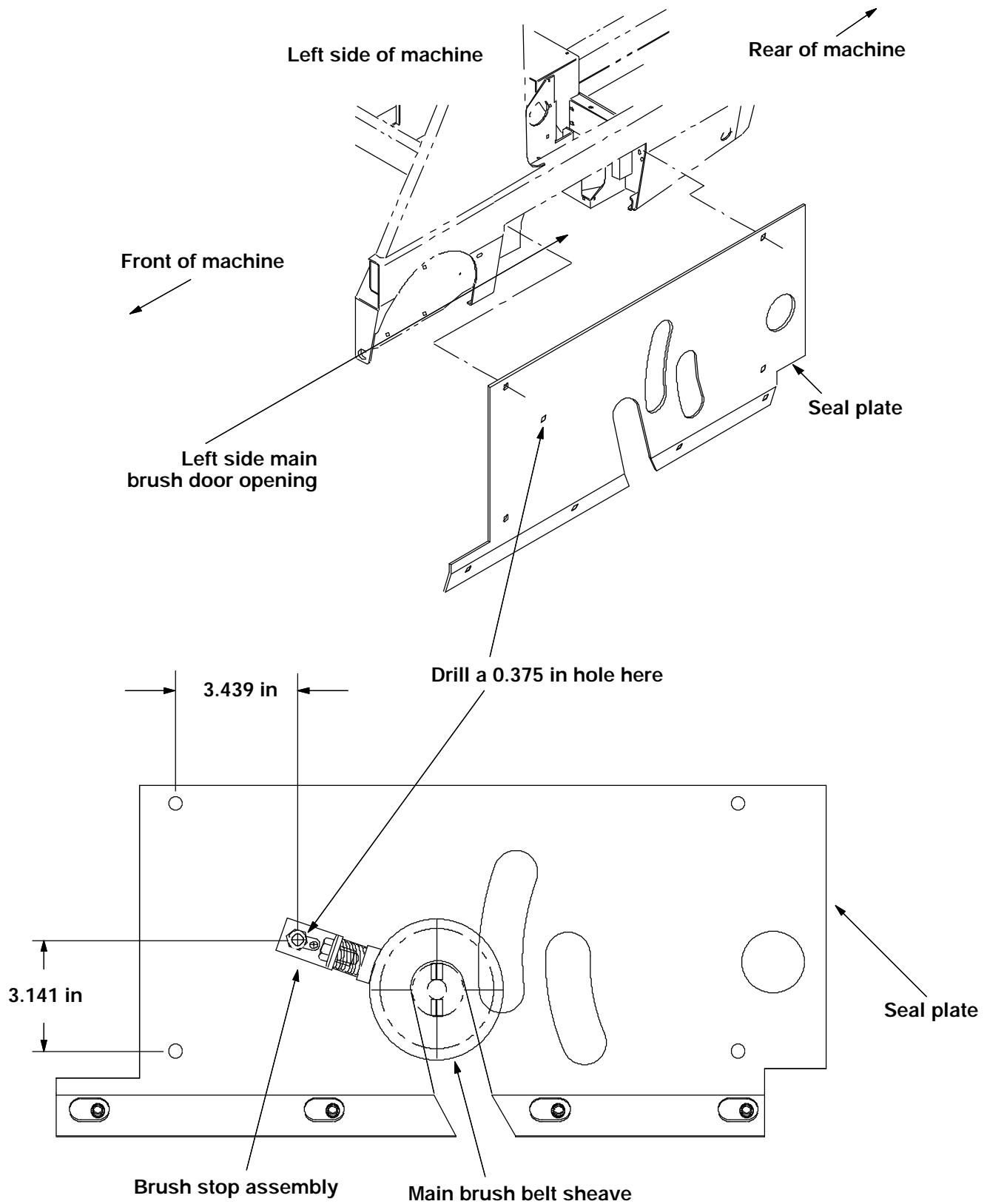
2. Mark and drill a 0.375 inch hole into the seal plate where indicated in **Figure 1**.
3. Install the spring (3) onto the bumper (2). Slide the spring through the sleeve on the bracket (1). (Refer to FIG. 2)
4. Install nut (4) onto the bumper stud. Tighten the nut until it compresses the spring slightly. (Refer to FIG. 2)
5. Attach bracket (1) and bumper to seal plate as shown in **Figure 1** with hardware (5), (6), and (7). Tighten all hardware. (Refer to FIG.1 and 2)

*NOTE: Adjust bumper so it rests against the main brush sheave when the main brush is in the raised position.*

6. Start the machine, then raise and lower the main brush to see if the bumper is adjusted properly. The main brush should stop completely when raised.

*NOTE: **Turn off machine and remove key** before making further adjustments to the brush stop assembly.*

7. Readjust brush stop assembly as necessary.



**FIG. 1 - Hole Location in Seal Plate**

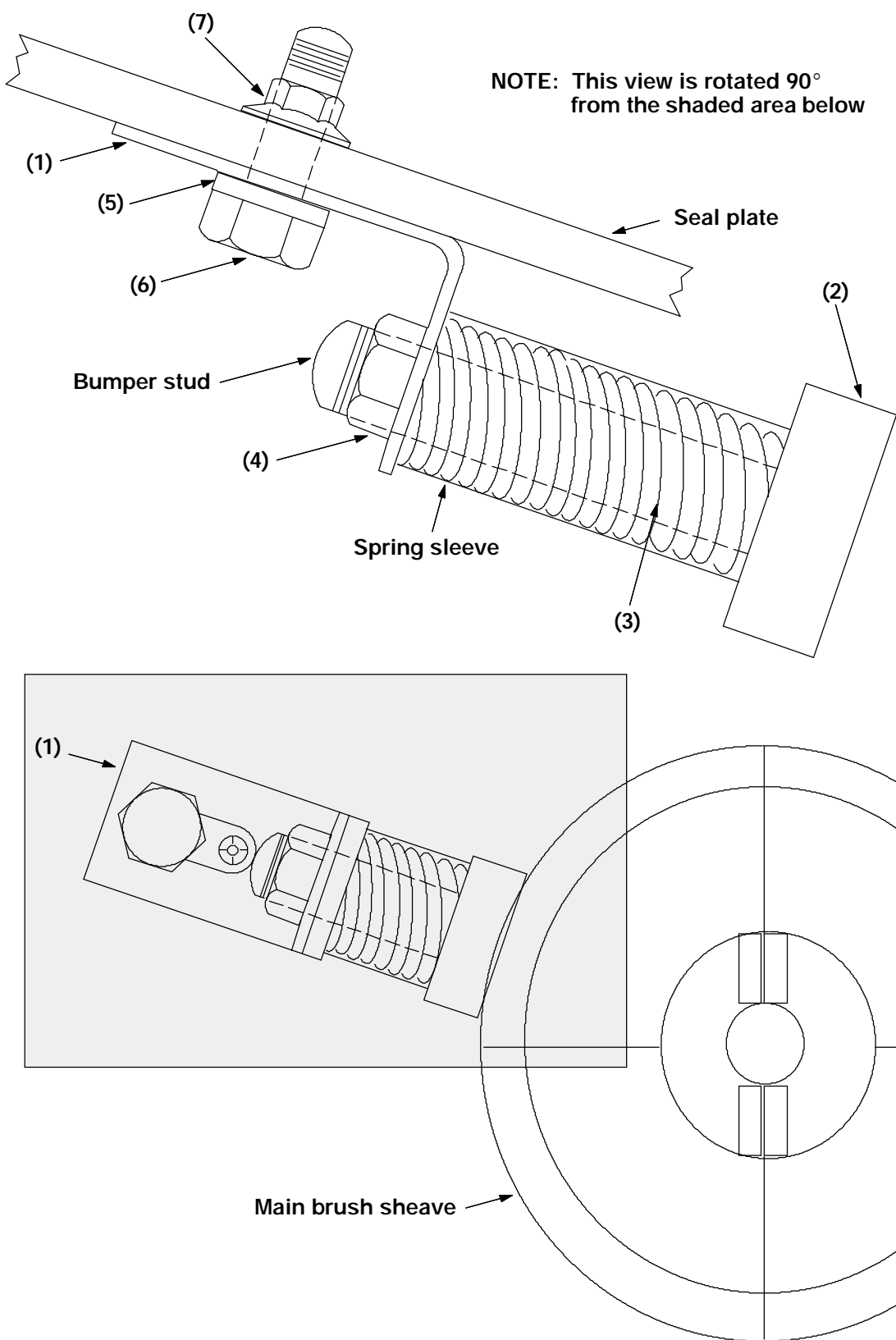


FIG. 2 - Assembly of Brush Stop Kit

**BILL OF MATERIALS FOR KIT NUMBER 36088**

<b>Ref.</b>	<b>TENNANT Part No.</b>	<b>Description</b>	<b>Qty.</b>
1	366084	Brush stop bracket	1
2	20802	Rubber bumper	1
3	86444	Spring, .60 OD X .75	1
4	41169	Nut, hxloc nylyn .25 X 20 SS	1
5	39349	Washer, flat	1
6	16931	Screw, hex M 8X1.25	1
7	07791	Nut, hex flange M 8X1.25	1

TENNANT COMPANY  
P. O. Box 1452  
Minneapolis, MN 55440-1452