



INSTRUCTION BULLETIN

No. 340030
Machine: 7400
Published: 12-96/00
System: SCRUBBING

NOTE: DO NOT DISCARD the Parts List from the Instruction Bulletin. Place the Parts List in the appropriate place in your machine manual for future reference. Retaining the Parts List will make it easier to reorder individual parts and will save you the cost of ordering an entire kit.

NOTE: Numbers in parenthesis () are reference numbers for parts listed in Bill of Materials.

Installation Instructions for Kit number 20868

SYNOPSIS / PROBLEM:

This kit contains the parts needed to install a squeegee cylinder pin kit on the model 7400 scrubber. The old pin may seize and break. This kit will eliminate any corrosion problems.

Please follow step-by-step instructions.

SPECIAL TOOLS / CONSIDERATIONS:

(Estimated time to complete: 2 hours)

PREPARATION:

(Refer to FIG. 1, 2 and 3)

FOR SAFETY: Before leaving or servicing machine, stop on level surface and set parking brake. Then turn off machine and remove key.

1. Open the latch on the rear squeegee and pull the debris tray/squeegee assembly out all the way. (Refer to FIG. 1)
2. Start the machine and lower the rear squeegee.
3. Remove the hardware holding the debris tray frame to the left side of the machine frame. (Refer to FIG. 1)
4. Pull the debris tray/squeegee assembly out far enough to access the squeegee lift cylinder. (Refer to FIG. 1)
5. Remove the snap ring from the old lift cylinder pivot pin. (Refer to FIG. 3)
6. Remove the cotter pin and clevis pin from the other end of the lift cylinder where it attaches to the cable pivot bracket. (Refer to FIG. 3)
7. Lift the cylinder off the old pivot pin and position it out of the way of the debris tray. (Refer to FIG. 2 and 3)

INSTALLATION:

(Refer to FIG. 1, 2 and 3)

1. Position the new plate weldment (1) on the debris tray up against the old pivot pin. Use the notch on the new plate weldment (1) to correctly align the new plate. The edge of the new plate should be parallel with the edge of the debris tray. (Refer to FIG. 2)
2. Mark the three holes in the new plate weldment (1). Remove the new plate and drill the three marked holes to .375 in. into the debris tray. (Refer to FIG. 2)

3. Place the new clevis pin (3) into the larger hole on the new plate weldment (1) so it sticks up.
4. Position the new plate weldment (1) and pin (3) assembly back on the debris tray. Line up the three holes. (Refer to FIG. 2)

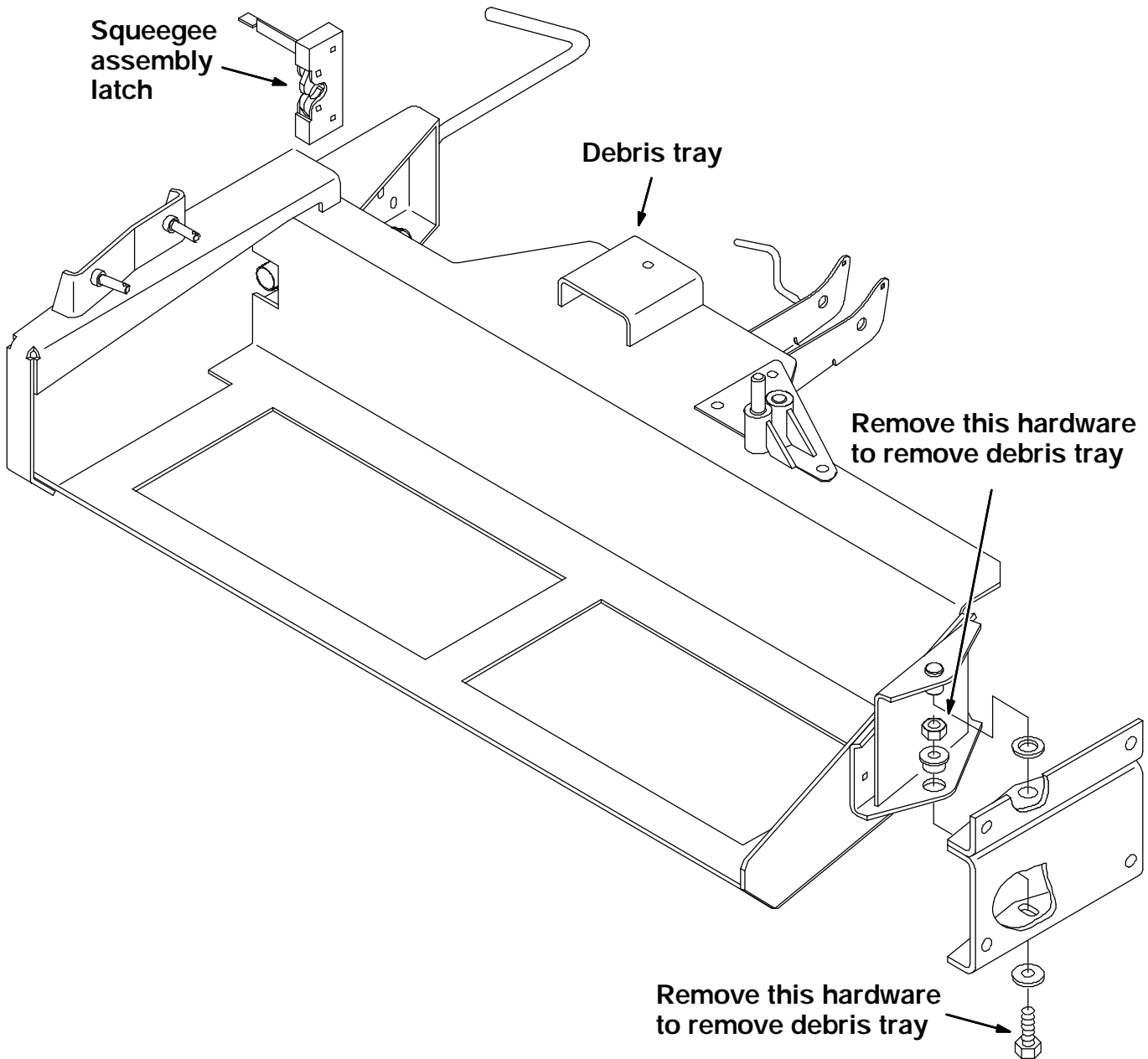


FIG. 1 - Debris Tray Removal

5. Install the three hex screws (6) and nyloc nuts (5) in the plate and tighten to 18 - 24 Nm (15 - 20 ft). (Refer to FIG. 2)
6. Install the lift cylinder on the new clevis pin (3). Install the new cotter pin (4). (Refer to FIG. 2)

7. Reinstall the clevis pin and cotter pin back in the rod end of the lift cylinder and cable pivot bracket. (Refer to FIG. 3)
8. Position the debris tray/squeegee assembly back in the machine. Reinstall the hardware and tighten firmly. (Refer to FIG. 1)

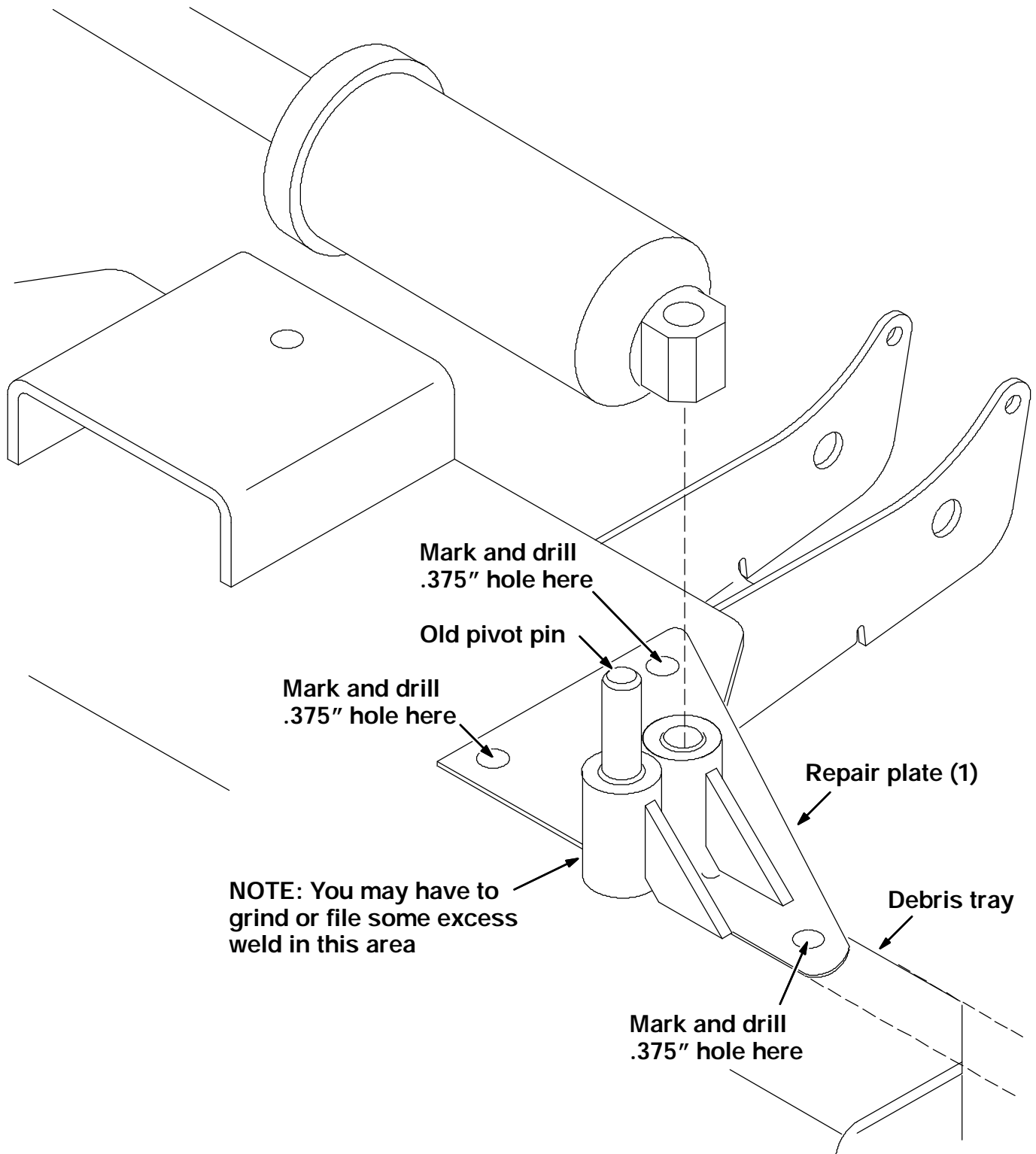


FIG. 2 - Weldment Installation

9. Start the machine and raise the rear squeegee. Push the squeegee assembly in until it latches. (Refer to FIG. 1)

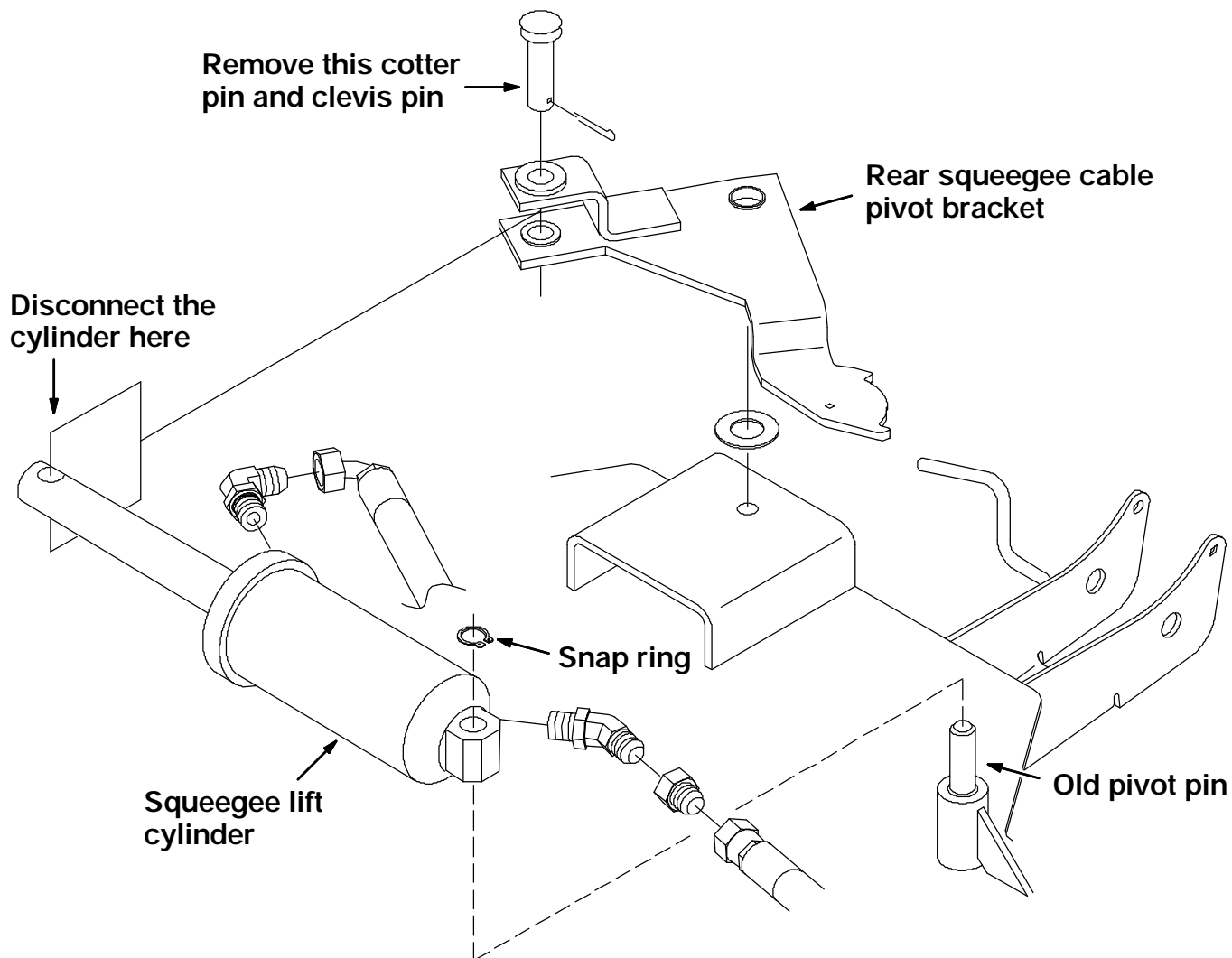


FIG. 3 - Squeegee Cable Pivot Bracket

BILL OF MATERIALS FOR SQUEEGEE LIFT CYLINDER PIN KIT 20868

Ref.	TENNANT Part No.	Description	Qty.
1	20901	Plate weldment, repair	1
2	63233	Bushing	2
3	06474A	Clevis pin	1
4	08175	Cotter pin	1
5	08713	Nyloc nut	3
6	09010	Hex screw, 5/16"	3

TENNANT COMPANY
P. O. Box 1452
Minneapolis, MN 55440-1452