



## INSTRUCTION BULLETIN

No. 340023  
Machine: 6400 E  
Published: 11-96/00  
System: OPTIONS

**NOTE: DO NOT DISCARD the Parts List from the Instruction Bulletin. Place the Parts List in the appropriate place in your machine manual for future reference. Retaining the Parts List will make it easier to reorder individual parts and will save you the cost of ordering an entire kit.**

*NOTE: Numbers in parenthesis ( ) are reference numbers for parts listed in Bill of Materials.*

Installation instructions for kit number 361196.

### SYNOPSIS / PROBLEM:

This kit contains the parts needed to install a high capacity dust control kit on the 6400 model electric sweeper.

Please follow step-by-step instructions.

### SPECIAL TOOLS / CONSIDERATIONS:

(Estimated time to complete: 3 hours)

### INSTALLATION OF STEP SHEAVE ONTO MOTOR SHAFT:

(Refer to FIG. 1)

1. Disconnect battery cables from battery.

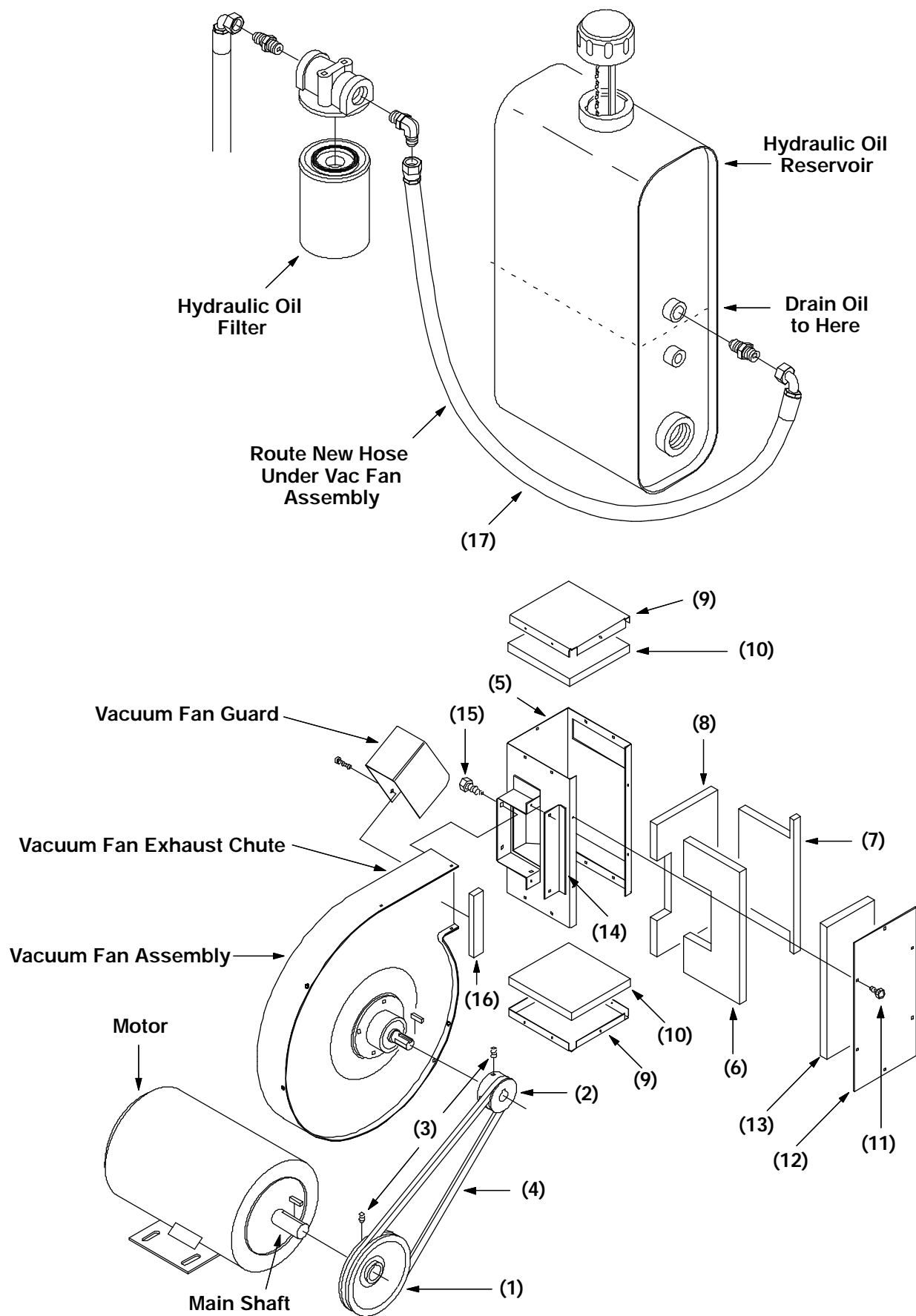


**WARNING: Always disconnect battery cables from machine before working on electrical components.**

2. Raise hopper and engage prop rod.

**FOR SAFETY: Before leaving or servicing machine, stop on level surface and set parking brake. Then turn off machine and remove key.**

3. Remove belt guard.
4. Loosen belt by applying downward pressure on vac fan, then remove belt. (Refer to FIG. 1)
5. Remove clips holding rubber fire wall nearest the vac fan, then fold the firewall back to access the auxiliary drive motor and vac fan.
6. Remove both screws holding vac fan assembly to frame; loosen clamp on fan hose, then remove the fan. (Refer to FIG. 1)
7. Loosen, *but do not remove*, both screws on legs of auxiliary drive motor mounting bracket and release tension on pump drive belt.
8. Remove pump drive belt from motor sheave.



**FIG. 1 - Installation of High Capacity Dust Control Assembly**

9. Remove drive sheave on auxiliary drive motor by loosening both set screws. *(Refer to FIG. 1)*

*NOTE: Measure and record position of sheave on shaft before removing it; the new sheave will install in the same location on motor shaft. Retain sheave key.*

10. Install new step sheave (1) using two set screws (3); ensure the key is fully seated in hub of sheave. *(Refer to FIG. 1)*
11. Reinstall pump drive belt to a deflection of *approximately* 1/8" under 5-1/2 lbs. of weight at belt midpoint, then tighten motor bracket screws securely. *(Refer to FIG. 1)*

#### **ASSEMBLY OF VAC FAN MUFFLER BOX:**

*(Refer to FIG. 1)*

1. Remove protective backing from two pieces of soundfoam (10) and apply them to the inside of both vac fan muffler end plates (9). *(Refer to FIG. 1)*
2. Add soundfoam (13) to vac fan muffler cover plate (12); center foam on the cover leaving a 1/2" border on all sides. *(Refer to FIG. 1)*
3. Add remaining pieces of soundfoam (6), (7), and (8) around the openings in the vac fan muffler box (5), leaving a 1/2" border at the top and bottom of foam inside muffler box.

*NOTE: Add foam to back of muffler box first. (Refer to FIG. 1)*

4. Install end plates (9) and cover plate (12) onto muffler box using screws (11) provided. *(Refer to FIG. 1)*

#### **INSTALLATION OF MUFFLER BOX ONTO VAC FAN ASSEMBLY:**

*(Refer to FIG. 1)*

1. Remove vac fan guard from end of vac fan exhaust chute (retain hardware). *(Refer to FIG. 1)*
2. Remove screws from top and bottom end of fan outlet (retain hardware).
3. Install muffler box to vac fan assembly using two screws (15) provided and screws saved in step 2. *(Refer to FIG. 1)*
4. Attach vac fan outlet seal (16) to vac fan assembly with mounting angle (14) using screws (15) provided. *(Refer to FIG. 1)*

#### **INSTALLATION OF VAC FAN SHEAVE, BELT, AND HYDRAULIC HOSE:**

*(Refer to FIG. 1)*

1. Remove existing fan sheave from fan. *(Refer to FIG. 1)*
2. Install new sheave (2) on fan shaft using set screws (3) and sheave key. *(Refer to FIG. 1)*

*NOTE: To allow for final adjustment, only partially tighten fan sheave set screws at this point.*

3. Drain oil in the hydraulic oil reservoir below the uppermost port. *(Refer to FIG. 1)*
4. Remove and discard hose that runs between uppermost port and hydraulic oil filter. *(Refer to FIG. 1)*
5. Install new hose (17) between reservoir and filter; route hose under vac fan and tighten both ends securely. *(Refer to FIG. 1)*
6. Refill reservoir with oil drained in step 3; check new hose fittings for leaks. *(Refer to FIG. 1)*

7. Reinstall vac fan and muffler box, then reattach vac hose and tighten clamp.

8. Install new fan belt (4). (Refer to FIG. 1)

*NOTE: Check clearance between muffler box and motor compartment, and between muffler box and hydraulic fittings. To gain additional clearance between muffler box and hydraulic fittings, loosen screws at base of motor and slide it 1/8" to 1/4" toward pump. Readjust pump belt tension as necessary.*

9. Check alignment of vac fan sheave and belt with motor sheave; adjust as necessary, then fully tighten sheave screws (ensure key is fully seated in sheave hub).

10. Adjust lock nut on spring eyebolt to obtain a vac fan belt deflection of *approximately* 3/16" with a force of 3 lbs. at belt midpoint.

11. Replace belt guard. (Refer to FIG. 1)

12. Reconnect battery cables to battery and check auxiliary drive motor, pump, and vac fan for proper operation.

#### **BILL OF MATERIALS FOR HIGH CAP DUST CONTROL KIT 361196**

<b>Ref.</b>	<b>TENNANT Part No.</b>	<b>Description</b>	<b>Qty.</b>
1	361191	Step Sheave	1
2	360406	Fan Sheave	1
3	57496	Set Screw, nylon loc	4
4	360753	Fan Belt	1
5	361926	Vac Fan Muffler	1
6	361936	Soundfoam Insulation	1
7	361994	Soundfoam Insulation	1
8	361995	Soundfoam Insulation	1
9	361932	Vac Fan Muffler Plate	2
10	361993	Soundfoam Insulation	2
11	87838	Hexforming Screw	18
12	361992	Vac Fan Muffler Plate	1
13	361937	Soundfoam Insulation	1
14	361935	Vac Fan Muffler Mounting Angle	1
15	74455	Hexforming Screw	2
16	361327	Vac Fan Outlet Seal	1
17	71557	Hose	1

TENNANT COMPANY  
P. O. Box 1452  
Minneapolis, MN 55440-145