



**PC PROGRAMMER  
SOFTWARE -  
INDUSTRIAL**

**INSTALLATION &  
OPERATION**

**SK76764/2**

---

© PG Drives Technology. 2004

**All rights reserved.**

This manual is furnished under copyright and may only be used in accordance with the terms laid out by PG Drives Technology.

The information in this manual is furnished for informational use only, is subject to change without notice, and should not be construed as a commitment by PG Drives Technology.

Except as permitted by such terms, no part of this manual may be reproduced, stored in a retrieval system, or transmitted, in any form or by any means electronic, mechanical, recording, or otherwise - without the prior written permission of PG Drives Technology. +44 (0) 1425 271444

TABLE OF CONTENTS

About this manual ..... iv

Languages ..... iv

Chapter 1 - Introduction ..... 1

1 Introduction ..... 2

2 Hardware ..... 2

2.1 CD ROM ..... 2

2.2 Programming Cable(s) ..... 3

3 Compatibility ..... 3

3.1 PC Compatibility ..... 3

3.2 Vehicle Control System ..... 3

Chapter 2 - Installation ..... 5

1 Installation ..... 6

2 Operation ..... 7

3 Connection to a Control System ..... 7

4 Upgrades ..... 8

## About this manual

The Technical Manual gives a brief, general introduction to the PC Programmer. For more detailed and/or current information refer to the Electronic Manual.

Throughout the manual icons are used to draw the reader's attention.

The icons used are:



**Note** - A general point for best practice.



**Caution** - A point of safety which if ignored could result in damage to the control system or the vehicle.



**Warning** - A point of safety which if ignored could cause injury to the individual.



**PG Drives Technology** accept no liability for any losses of any kind if the points are not followed.

## Languages

The PC Programmer executable on this CD is supplied in English.

To install PC Programmer in another language, if available, refer to Chapter 2 section 4 Upgrades.



## **CHAPTER I**

### **INTRODUCTION**

# I Introduction

The Industrial PC Programmer software allows PG Drives Technology powered Industrial control systems to be programmed with a PC. In addition, to programming, the PC Programmer can be used to perform diagnostic operations on the machine's electrical system.



**It is possible to set up a control system so that it is unsuitable for some users or even some machines. For all of the above reasons it is important that you contact PG Drives Technology if you have the slightest doubts or if you need any advice on programming.**



**Programming and diagnostics should only be conducted by engineers with in-depth knowledge of PG Drives Technology electronic control systems. Incorrect programming could result in an unsafe setup of a machine for a user. PG Drives Technology accept no liability for any losses of any kind if the programming of the control system is altered from the factory preset values.**

## 2 Hardware

The PC Programmer pack comprises of the following items:

- CD ROM
- Programming Cable(s)
- Technical Manual (this document)

### 2.1 CD ROM

The CD ROM contains installation, executable and information files. There are two version of CD ROM

- Dealer programming
- OEM programming. The OEM version is only available to machine manufacturers.

The CD ROM contains the Electronic Manual which has the very latest detailed information about the PC Programmer software. If you have just purchased the PC Programmer product, then the Electronic Manual on the CD ROM will be current. However, as the PC Programmer software is developed further to provide new

functionality or to support new control systems, then the information in the Electronic Manual on your CD ROM may become outdated. In this instance, the very latest PC Programmer software and information can be downloaded from PG Drives Technology. Refer to the Upgrades section.

It is recommended that you print a copy of the latest Electronic Manual and keep it in a convenient place.

The Electronic Manual has been saved as a PDF and will require ADOBE Acrobat Reader to view. A copy of ADOBE Acrobat Reader has been included on the CD ROM.

To install:

- Right click on the CD ROM icon.
- Select EXPLORE from the drop down menu.
- Locate and double click on the Acrobat Reader executable file.
- When the installation is complete close WINDOWS EXPLORER.

## **2.2 Programming Cable(s)**

The programming cable connects the PC to the machine control system via a communications port. At present, just one cable is supplied terminated at one end in a D-type connector and at the other in a Molex 'Mini Fit Jr.' 4 way connector for connection to Trio/Trio+, Egis and S-Drive control systems. As different control systems and PC's are developed, alternative cables may be necessary.

For information relating to later cables, refer to the Electronic Manual.

# **3 Compatibility**

## **3.1 PC Compatibility**

To run the enclosed PC programmer CD effectively the following hardware is required:

- Microsoft Windows 95/98, 2000, NT or Xp.
- CD ROM drive
- 20Mb free storage space on hard drive
- Spare communications port

## **3.2 Machine Control System**

- Refer to the Electronic Manual on your CD ROM.







## **CHAPTER 2**

# **INSTALLATION**

# I Installation

The installation of the PC Programmer is fully automatic. Simply insert the CD ROM into the PC CD drive, wait a few seconds and then follow the on-screen instructions.

The PC Programmer software will be automatically installed in:

PROGRAM FILES\PGDT\Industrial PC Programmer



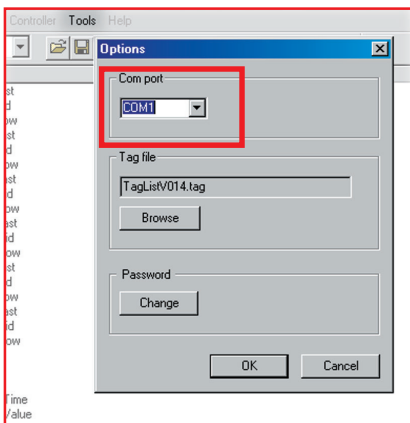
**This is for English versions on Windows. When using foreign language versions of Windows, the installation directory will be that language's equivalent of PROGRAM FILES.**

If the CD fails to run automatically, then double click the CD icon within My Computer. When the installation is complete the icon below will appear on the PC's desktop screen and in a new shortcut folder on your Start menu. Double-clicking the icon will start the PC Programmer software.



Once the installation is complete the Electronic Manual will be found in the START menu, within Programs under PG DRIVES TECHNOLOGY

The PC Programmer's default communications port is COM1. Any other communications port (COM2-COM8) can be selected by using the **Comms** command within PC Programmer.



## 2 Operation

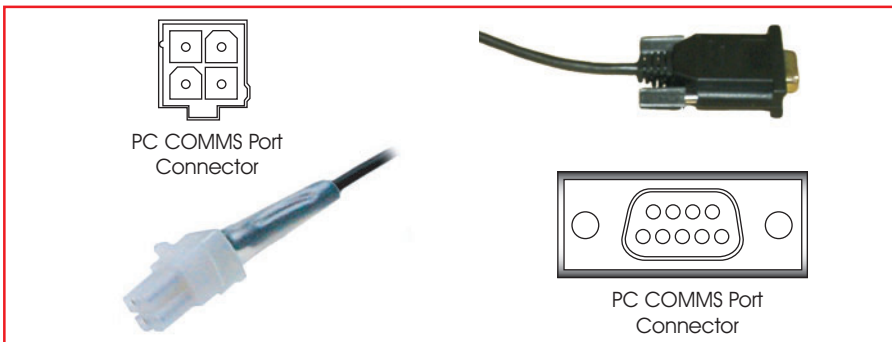
Operation of the PC Programmer is achieved using Windows type commands and techniques. For detailed information refer to the Electronic Manual.

## 3 Connection to a Control System

For programming operations you can connect the PC Programmer cable to a control system at any time, regardless of the operating condition of the control system.

If you are using the PC Programmer for diagnostics purposes, then to view the current trip code you must connect the PC Programmer while the control system is in a tripped state, i.e. the battery gauge is flashing rapidly.

To attach the control system to the PC use the programming cable as shown below.



**Remember to disconnect the PC Programmer from the control system before you start driving.**

## 4 Upgrades

If you have purchased a copy of the PC Programmer software you are eligible for free upgrades. This means each time a new programmable function or control system is introduced, then you can upgrade you PC Programmer to the latest version.

To qualify for free upgrades, you need to send the following information to [ftprequest@pgdt.com](mailto:ftprequest@pgdt.com):

- Your name
- Your address
- Your organization (the organization which originally purchased the PC Programmer)
- Product type - this is the number, Dxxxx/x, which can be located on the packing box, the CD and the cable labels.
- Product serial number – this is the number, \*xxxxxxx\*, which can be located on the packing box, the CD and the cable labels.

Once qualification has been recognized you will then be sent an Email containing an unique username and password.

This username and password allows you to access the latest software via the [www.pgdt.co.uk](http://www.pgdt.co.uk) website.

This is achieved as follows:

- Upon entering [www.pgdt.co.uk](http://www.pgdt.co.uk) site click on the ACCESS FTP SITE icon.
- When prompted enter the unique username and password.
- Open the Industrial Customers folder.
- Open the Software folder.
- Open the PC Programmer folder.
- Open the Relevant Program type folder. i.e. - OEM or Dealer



**It is recommended that the Issue log Text File is read prior to a download being attempted. The Issue log contains a complete history of the improvements, adjustments and changes created within each issue.**

- Select the required version upgrade.



**All the upgrades will be kept in separate folders to allow users to install earlier versions of the program if required. Each upgrade overwrites the existing copy on the PC when it is downloaded. Therefore if an old version is downloaded**

to carry out work on early system software then the latest version will need to be downloaded again.



**You can check the version of software you have currently installed on your PC by using the About Box located in the Help pull-down menu within PC Programmer.**

- Double-click on the Zip file to start the download.
- Follow the instructions within the Zip wizard.
- Now save the electronic manual to the desktop.



**Each upgrade will have an electronic manual specific to that version available in PDF format.**

