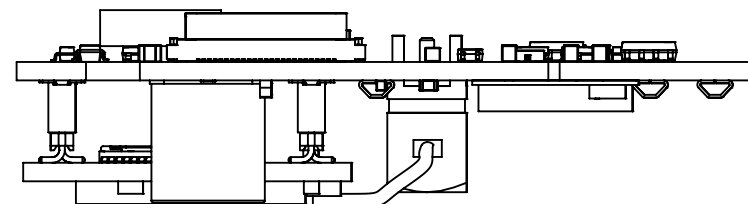
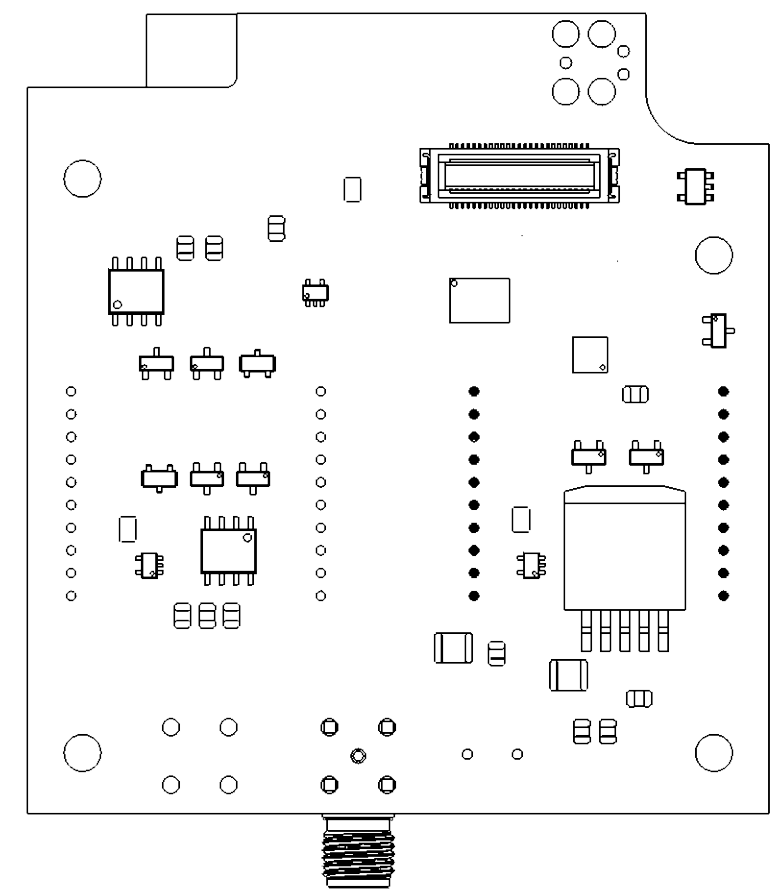
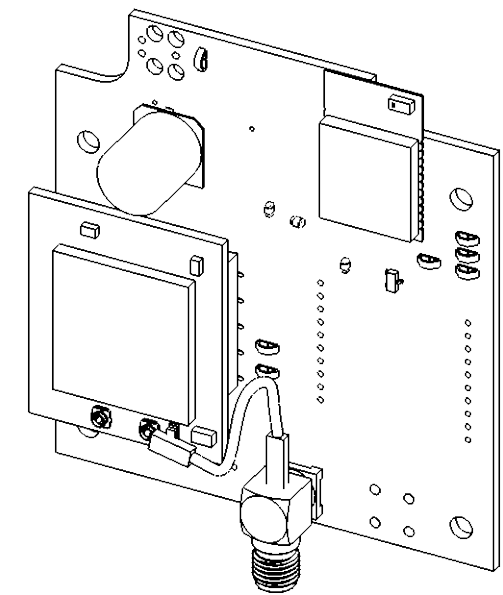
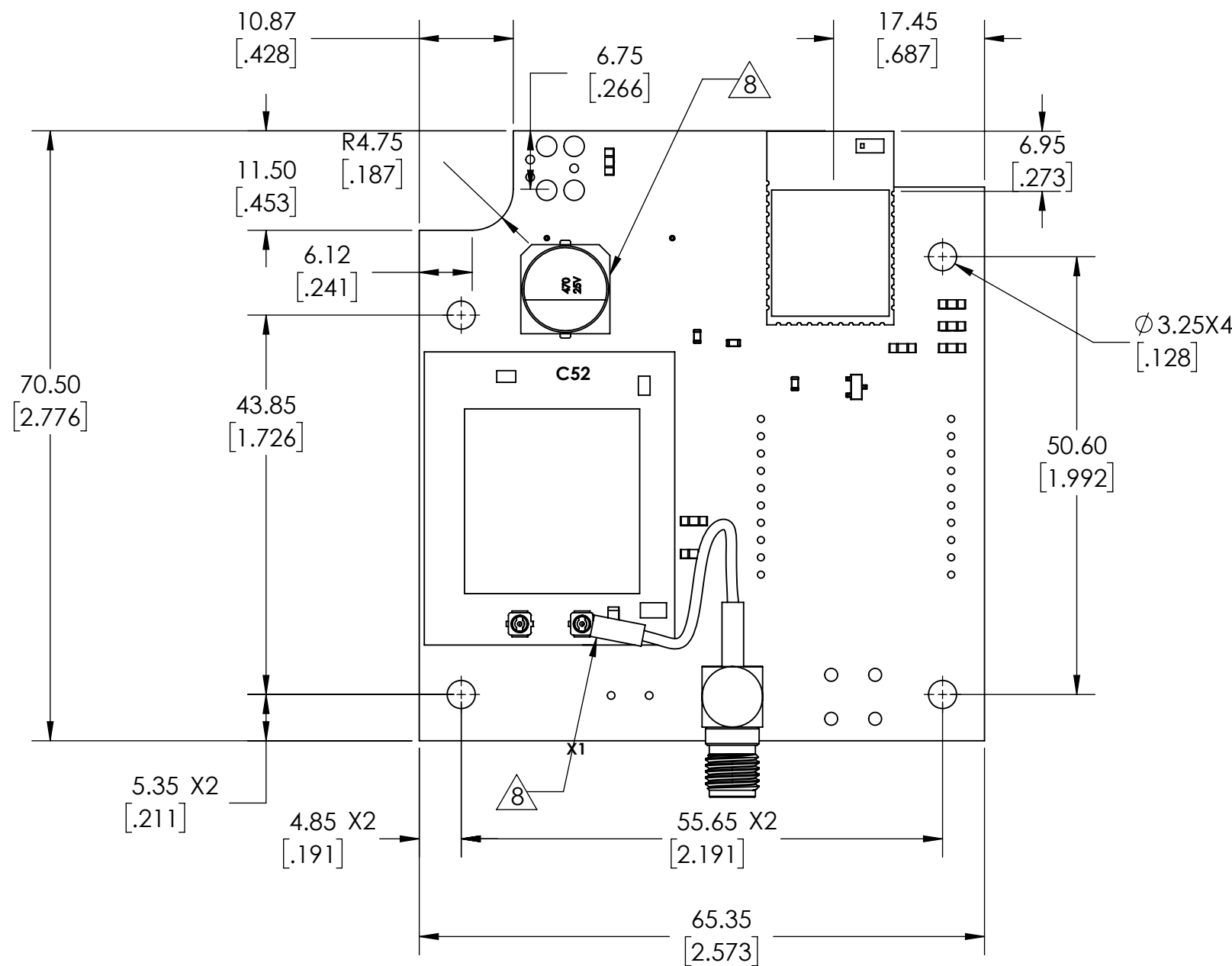


SIDE VIEW



TOP VIEW



BACK VIEW

REVISIONS			
REV.	DESCRIPTION	DATE	APPROVED
B	UPDATE NOTE 1 WITH NEW BOM UPDATE NOTE 3 UPDATE NOTE 4 TO ADD CONFORMAL COATING	03/13/2023	
D	UPDATE BOM TO REV C	3/23/2023	

NOTES:

1) PCB ASSEMBLY TO BE BUILT USING TENNANT QPL BILL OF MATERIAL: BOM1261319_revC.

2) WORKMANSHIP STANDARD PER: IPC-J-STD-001E, IPC-A-610E, CLASS 2.

SOLDERING AND ELECTRICAL CONNECTIONS : IPC-S-815B.

OR MORE CURRENT VERSIONS OF THESE STANDARDS.

3)APPLY LABEL OR LABELS WITH THE FOLLOWING INFORMATION:

HUMAN READABLE TENNANT PART NUMBER AND REVISION

NOTE: THIS NUMBER AND REVISION SHOULD MATCH THIS RELEASED TENNANT DRAWING

HUMAN READABLE MANUFACTURER'S LABEL WITH SERIAL NUMBER

BARCODE CONTAINING SERIAL NUMBER

NOTE: LINEAR OR 2D BARCODE ACCEPTABLE

NOTE: 2D MATRIX DIMENSIONS TO BE NO SMALLER THAN 4MM BY 4MM

PLACE LABELS SO THEY ARE VISIBLE FROM THE TOP OF THE ASSEMBLY

4)CONFORMAL COATING TO BE APPLIED TO TOP AND BOTTOM OF THE PCB

- ALL MOUNTING HOLES TO BE MASKED OFF AT A MIN DIAMETER OF 9MM

- NO COATING TO BE APPLIED TO CONNECTORS J1, J8, ANTENNACABLE1

- COATING TO FOLLOW QPL Q50000-001

5) ASSEMBLY TO BE MANUFACTURED PER RoHS/LEAD FREE STANDARDS.

6) REFER TO PCB MANUFACTURING NOTES ON FABRICATION LAYER OF GERBERS.

7) ALL DIMENSIONS ARE FOR REFERENCE ONLY.

8 APPLY NON-CORROSIVE PCB-SAFE RTV AROUND C52 AND X1.

MOMENTIVE RTV 108 OR EQUIVALENT

MINIMUM BEAD DIAMETER: 3 mm

9) FUNCTIONAL CIRCUIT TEST

HARDWARE REVISION (FOR REFERENCE ONLY)

-DECIMAL: 3.0

-BINARY: 0011

DEVELOPMENT PART

MATERIAL SPECIFICATIONS: NOTED	OTHER TREATMENTS AND FINISHES NONE	PAINT - COLOR NONE	GLOSS	PERFORMANCE	ACCEPTANCE
PART NAME: CIRCUITBOARD, TELEM					

CHANGED BY: BRETT PAULSEN	DATE: 03/23/2023
MDR: STACY GAHLON	01/12/2022
DES: BRETT PAULSEN	06/25/2021

REV	ECO
-D	

WELDING NOTATION IN ACCORDANCE WITH AWS A2.4-98		
UNLESS OTHERWISE SPECIFIED		
DIMENSION TOLERANCING IN ACCORDANCE WITH ASME Y14.5M-2009		
ALL UNTOLERANCED DIMENSIONS ARE BASIC AND CONTROLLED BY:		
X.X	±0.8	±[.03]
X.XX	±0.25	±[.010]
X.XXX	±0.125	±[.0049]
ANGLES	±0.5°	

GENERAL NOTES	
PRIMARY DIMENSIONS ARE METRIC, REFERENCE DIMENSIONS WITH BRACKETS ARE INCH. UNLESS OTHERWISE SPECIFIED ALL DIMENSIONS ARE AFTER TREATMENTS AND FINISHES.	
PROPRIETARY INFORMATION	
MAY NOT BE REPRODUCED OR DISCLOSED TO OTHERS WITHOUT WRITTEN PERMISSION OF TENNANT COMPANY.	
SHEET 1 OF 1	



DWG C SIZE	PART NUMBER 1261319
------------------	------------------------