

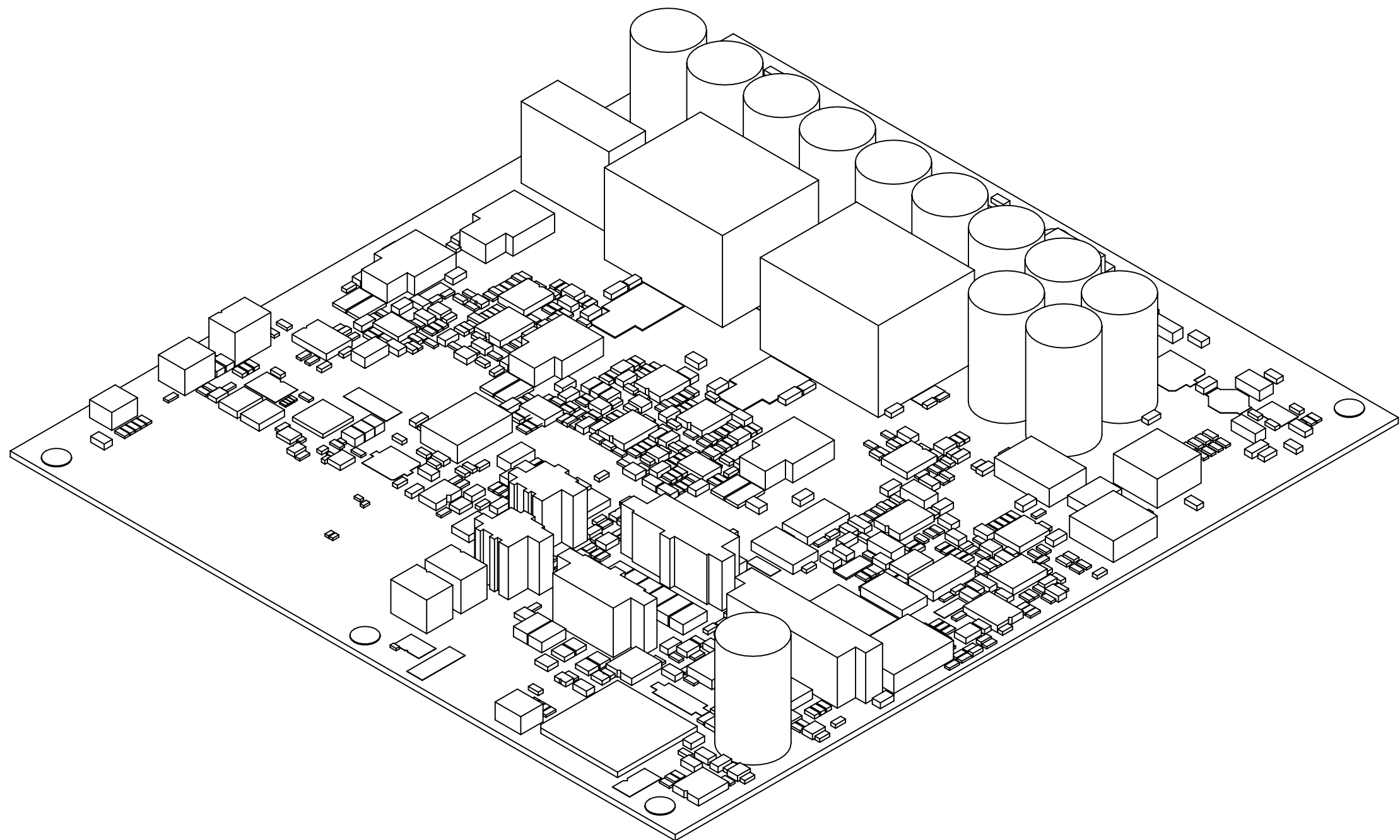
D

- C

B

A

NOTE: NO HEATSINK OR SIL PAD INSTALLED ON THIS ASSEMBLY LEVEL.



D

C

B

A




SHEET 1 OF 1

MATERIAL SPECIFICATIONS: SEE PARTS LIST	OTHER TREATMENTS AND FINISHES NOTED
PART NAME: CIRCUITBOARD, ASSY [T600, CNTRL]	

	REV	ECO
	05	
CHANGED BY: PAUL HENDERSON	DATE: 09/09/2022	
MDR:		
DES: CHARLES HAWKINS	08/24/2016	

WELDING NOTATION IN ACCORDANCE WITH AWS A2.4-98		
UNLESS OTHERWISE SPECIFIED		
DIMENSION TOLERANCING IN ACCORDANCE WITH ASME Y14.5M-2009		
ALL UNTOLERANCED DIMENSIONS ARE BASIC AND CONTROLLED BY:		
X.X	±0.8	±[.03]
X.XX	±0.25	±[.010]
X.XXX	±0.125	±[.0049]
ANGLES		±0.5°

<p align="center">GENERAL NOTES</p> <p>PRIMARY DIMENSIONS ARE METRIC, REFERENCE DIMENSIONS WITH BRACKETS ARE INCH. UNLESS OTHERWISE SPECIFIED ALL DIMENSIONS ARE AFTER TREATMENTS AND FINISHES.</p>	
<p align="center">PROPRIETARY INFORMATION</p> <p>MAY NOT BE REPRODUCED OR DISCLOSED TO OTHERS WITHOUT WRITTEN PERMISSION OF TENNANT COMPANY.</p>	
<p>SHEET 1 OF 1</p>	



DWG D SIZE	PART NUMBER 1229861
------------------	------------------------